

# United States, British Commonwealth & Foreign, plus Forgeries



October 14, 2013  
at the New Yorker Hotel, NYC

Harmers



International Inc.

Not Affiliated with H.R. Harmer

\$20

“ODON SANDOR” WORLD-WIDE • THE “DEPARTMENT” U.S.  
OFFICIAL PROOFS • THE “DRAKE” U.S., BACK-OF-BOOK POSTAL HISTORY  
THE “SANDY” REMNANTS • THE H.K. JARRETT U.S. FORGERIES

# KET TO CATALOGUING

## SYMBOLS

* Unused	** Never hinged	O Used
☒ On cover	Δ On piece	S Specimen
⊕ Block of Four	⊞ Block larger than four	E Essay
TC Trial Colour	DP Die Proof	PP Plate Proof

## MAJOR ABBREVIATIONS

c.d.s. = Circular Date Stamp; C.T.O = Canceled to Order;

F.D.C. = First Day Cover ; ms. = Manuscript; var. = Variety

### CONDITION

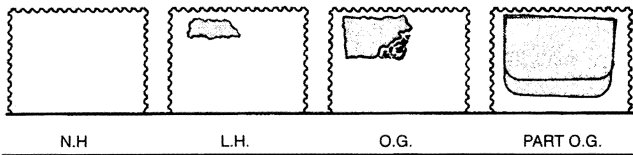
The various gradings of stamps are, in order; superb, extremely fine, very fine, fine. In the case of sets, large blocks, sheets, etc., the condition quoted represents the average, and quality above and below this standard can be expected.

**Mixed Condition:** In large lots, the condition is generally expected to range from fair to at best fine. Serious defects can be expected.

**Handstamp on reverse:** Denotes either a dealer, collector or indecipherable expert's mark.

**Signed by:** Denotes either the actual signature or mark of the expertiser. The absence of mentioning a signature does not reflect on the ability or knowledge of the party involved

### GUM:



Shaded portion can represent an actual hinge or the area disturbed by a hinge.  
n.h. = Never Hinged – unused with original gum in Post Office state and unmounted.

l.h. = Lightly Hinged – unused with full original gum showing some evidence of a previous hinge which may be present in part or entirely removed.

o.g. = Original Gum – unused with original gum somewhat disturbed by previous hinging which may still be present.

part o.g. = Part Original Gum – unused with original gum, large hinge remnants may or may not be present.

disturbed o.g. = Disturbed Original Gum – unused with original gum affected by sweating, glazing or mount disturbance; may not resemble the original gum.

unused = Unused without gum.

Ungummed = Unused without gum, as issued.

**BLOCKS OR SHEETS AND THEIR GUM:** Minor separations are the rule rather than the exception, in the case of blocks or sheets of any size. A few separations, around four perfs. per row, do not affect the value of a block or sheet and are not grounds for the return of a lot.

**CATALOGUE VALUES:** The final column shows the catalogue value of the lot.

**ESTIMATED VALUES:** If the estimated cash value is given, it is shown in the description and always indicated by the abbreviation "Est. Cash Value". It is used where the lot is large or where the actual value has little relation to the catalogue price. It represents the auctioneer's appraisal of the true MARKET value of a lot.

**PLEASE NOTE – CREDIT CARDS:** A 3% fee will be charged to credit card and PayPal users and a bidding deposit may be requested.

**OVERSEAS BUYERS:** We require that payment be made by credit card, bank draft, wire, or cheques in U.S. dollars made payable on a U.S. bank.

### BIDDING LEVELS

Up to \$ 150	\$5
\$150 - \$300	\$10
\$300 - \$600	\$25
\$600 - \$1,500	\$50
Over \$1,500	approx. 5%

Bids which do not conform to the above will be automatically reduced to the correct level.

### BIDS BY TELEPHONE

- A) Reservations must be made at least 2 days prior to the sale.
- B) Any errors are the responsibility of the bidder.

### BIDS BY FAX or E-MAIL

Must be received no later than 2 hours before the session commences.

And **MUST** be confirmed by a reply from a Harmers International representative.

Fax: 914.962.5885 E-Mail: [bids@harmersInternational.com](mailto:bids@harmersInternational.com)

### VALUATION OF LOTS

Valuations of all lots are available the week prior to the auction upon request.

### GUM DESCRIPTION

Recognizing that there are occasional differences of opinion concerning gum nomenclature by various expert committees, for example, a stamp described as o.g. being certified as large part o.g. or even part o.g., this minor classification discrepancy alone is not sufficient grounds for return.

### COVER CONDITION

Minor faults, including but not limited to file folds, not affecting stamps, small tears and some back flap damage have not been noted in the descriptions and are not grounds for return.

### REGISTERING TO BID IN OUR SALE

Bidders must be registered to participate in Harmers International Auctions. Bidder registration forms are included with catalogues, are available on our web site, [www.HarmersInternational.com](http://www.HarmersInternational.com) or by request.

Trade references are required (no societies or clubs). Dealers must provide a copy of their Resale Certificate to avoid NYS sales tax.

### ONLINE BIDDING

Live on-line bidding is available. We are not responsible for technology issues that may impact communication of bids.

### EXTENSIONS AND EXPERTISING

Any lots placed on extension for expertising **MUST** be submitted by Harmers International, Inc.. Submission by the purchaser will nullify any extension request. Therefore, upon notification of purchase, please contact us with the lot numbers you wish submitted and the expert.

### Auction Agents

Charles E. Cwiakala  
1527 S. Fairview Ave.  
Park Ridge, IL, 60068 U.S.A.  
Tel/fax (847) 823-8747  
[CECwiakala@aol.com](mailto:CECwiakala@aol.com)

Purser & Associates  
84 Webcover Rd., #2  
Arlington, MA 02474 U.S.A.  
Tel. (857) 928-5140  
Fax: (781) 777-1023  
Email: [info@pursers.com](mailto:info@pursers.com)

Jean-Claude Michaud  
15 Briarwood Crescent  
Halifax, NS B3M1P2 CANADA  
Tel. (902)443-5912  
Fax (902)445-5795  
Email: [jcm.ph@ns.sympatico.ca](mailto:jcm.ph@ns.sympatico.ca)

Trevor Chinery  
3 Sire Isaac Newton Drive,  
Boston, Lincolnshire, PE217SG  
ENGLAND  
Tel. 011441205330026  
Fax 1205315292  
Email: [trevortrility@aol.com](mailto:trevortrility@aol.com)

Frank Mandel  
P.O. Box 157  
New York, NY 10014 U.S.A.  
Tel. (212)675-0819  
Fax. (212) 366-6462

Harold Gordon  
614-6505 CSL Road  
Montreal, QC H4V1G3  
Tel/fax (514) 488-0445  
CANADA  
Email: [hbogordon@videotron.ca](mailto:hbogordon@videotron.ca)

Jean Lancaster Auction Agency  
1 Langley Crescent  
Kings Langley  
Herts, WD4 8EW  
Tel and Fax: +44 01923 262260  
Email: [info@lancasterauctionagency.co.uk](mailto:info@lancasterauctionagency.co.uk)

Jochen Heddergott  
Bauerstrasse 9  
D-8000 Munchen 40 GERMANY  
Tel. (089) 272-1683  
Fax (089) 272-1685  
Email: [mail@philagent.com](mailto:mail@philagent.com)

# UNITED STATES, BRITISH COMMONWEALTH, FOREIGN & FORGERIES

*The "Department" Collection of U.S. Official Proofs*

*The "H.K. Jarrett" U.S. Forgeries*

*The Drake Collection of U.S. Back-of-the-Book Postal History*

*The Odon Sandor Worldwide Accumulation, Part I*

*The "Briarcliff" Germany*

*The "Sandy" Remnants*

and the properties of 12 other owners

**SALE and EXHIBITION to take place in New York City at:**

The New Yorker Hotel, 481 Eighth Avenue at 34th Street

The Herald Square Room - 3rd Floor

**Monday, October 14, 2013, beginning at 10 am**

## EXHIBITION OF LOTS

At the American Stamp Dealers Association Fall Show

October 10, 11, 12, 13, 14 on the show floor, from 10:00 am to 6 pm or by appointment

To be sold at auction by

*Harmers*  *International Inc.*  
NOT AFFILIATED WITH H.R. HARMER, INC.  
**1325 Echo Hill Path, Yorktown Heights, NY 10598 USA**  
**Phone: 212.532.3700 | Fax: 914.962.5885** **www.HarmersInternational.com**  
**Email: Info@HarmersInternational.com**

*also offices in London*

Keith A. Harmer - Licensed Auctioneer, Licence Number 134246

On all lots sold a commission of 18% on the hammer price will be payable by the buyer

This firm subscribes to the ASDA code of ethics for auction firms

# United States

## Regular Issues

1	○	<b>1847, 5¢ red brown</b> , red c.d.s., good margins all around, very fine; P.S.E. Cert (2003) graded VF80 as orange brown . . . . . (1)	\$500
2	○	<b>1847, 10¢ black</b> , short transfer at top, sheet margin copy, black grid cancel, extremely fine; P.S.E. Cert (2003), B.P.A. Cert (1956) . . . . . (2)	\$1,500

## 1851-1857 Issue

3	☒	<b>Used to Canada: 1851, 3¢ orange brown, type I</b> (dark shade) pair and single - mixed margins plus 1¢, type IV, margins all around all tied by PHILDELPHIA Mar 6 c.d.s. on 1857 folded letter bearing red arc U. STATES PAID and blue BRANFORD transit on front, WATERFORD U.C. receiver and L.H.A.P.O. c.d.s. on reverse . . . . . (10, 9)	ECV \$600 - 800
		<i>A Special Delivery Request: "If Mr. Smith is away will his family take this from the P.O. and reply to it + oblige the writer".</i>	
4	○	<b>1857, 1¢ blue, type III</b> , lightly cancelled; reperfed, very fine appearance . . . . . (21)	\$2,500
5	★	<b>1857, 1¢ blue, type IIIa</b> , plate 4, Ashbrook notes in pencil on reverse, very fine . . . . . (22)	\$500
6	P	<b>1860, 24¢ lilac, plate proof on stamp paper</b> , un gummed, margins all round; "small corner crease", still very fine; Foundation Cert (1994) as Scott 37c . . . . . (37P5)	\$1,500
7	○	<b>1860, 30¢ orange</b> , neat red cancel; perforations probably improved at right, otherwise fine . . . . . (38)	\$475
8	★	<b>1863, 5¢ brown</b> , disturbed o.g.; corner perforation crease, fine . . . . . (76)	\$1,400
9	★	<b>1863, 5¢ brown</b> , unused, well centered, very fine; Foundation Cert (1987) . . . . . (76)	\$525
10	○	<b>1869, 2¢ brown</b> , socked-on-the-nose HIOGO JAPAN double-circle cancel; crease, fine . . . . . (113)	ECV \$175 - 200
11	★	<b>1870, 6¢ carmine, H. grill</b> , disturbed o.g., brilliant colour; "slightly disturbed o.g. and tiny tear in top margin", fine; Foundation Cert(2003) . . . . . (137)	\$5,000
12	★★	<b>1890, 10¢ green</b> , n.h., very fine; Foundation Cert (2000) . . . . . (226)	\$525

## 1893 Columbian Issue

13	★	<b>1893, \$1 Columbian</b> , regummed, very fine; A.P.S. Cert. (2006) . . . . . (241)	\$525
14	★	<b>1893, \$2 Columbian</b> , o.g., lightly hinged, bright colour and well centered; "small faults", very fine appearance; Foundation Cert. (2013) . . . . . (242)	\$1,150
15	○	<b>1893, \$2 Columbian</b> , very light c.d.s.; ever so small thin spot, still very fine . . . . . (242)	\$650
16	★	<b>1893, \$3 Columbian</b> , unused, very fine; Foundation Cert. (2002) . . . . . (243a)	\$900
17	★	<b>1894, 50¢ orange</b> , o.g., very fine . . . . . (260)	\$500
18	○	<b>1898, \$2 Trans-Miss.</b> , neat REG cancel, fine; A.P.S. Cert (2002) . . . . . (293)	\$1,100
19	★	<b>1903, \$2 dark blue</b> , o.g., very fine; Foundation Certs (1970 and 2003) . . . . . (312)	\$875
20	★	<b>1909, 6¢ red orange, bluish paper</b> , part o.g., fine . . . . . (362)	\$1,250

- 21 ★ 1913, 10¢ orange Panama-Pacific, o.g., very lightly hinged, extremely fine; Foundation Cert (1981) ..... (400A) \$180
- 22 ★★/★ 1926, White Plains souvenir sheet, five sheets, two are never hinged (1 stains), three are lightly hinged (1 trimmed), fine to very fine ..... (630) \$2,775



1



2



3



4



5



6



7



8



9



10



11



12



13



14



15



16



17



18



19



20



21

Washington-Franklin Issues

The study of these issues has generally centered on paper and perforations, which are hard to tell on cover. Here, Harmers leans toward the wonderful postal history documenting rates, wars, destinations and combinations. See also the back-of-the-book sections for more usages. Covers are in chronological order. Some Scott numbers are assumed.

23	☒	<b>1908, 2¢ carmine</b> , cancelled by POSTED ON HIGH SEAS SS SO CROSS on undated envelope bearing duplicate strike to New Jersey. Rare . . . . . (332)	ECV \$100 - 150
24	☒	<b>Used to Amchite Palestine (Turkey): 1909, 15¢ pale ultramarine</b> , tied by Taunton Mass. oval on registered envelope bearing Taunton October 11 1910 registered c.d.s. with NY transit and Beyouth English and Arabic receivers on reverse. Wonderful destination . . . . . (340)	ECV \$125 - 150
25	☒	<b>Used within Mexico: 1914, 1¢ green</b> , pair tied by VERA CRUZ MEX U.S. MAG JUL 10 on officially sealed (Mexican seal mostly on reverse) envelope bearing TAMPICO reciever and two large violet circular LISTA TAMPICO OCT _ 14 handstamp denoting advertising for the recipient. Quite novel . . . . . (424)	ECV \$300 - 400
26	☒	<b>Used to Russia: 1914, 15¢ gray</b> , tied by Imperial wax seal on reverse of registered envelope bearing on reverse SEATTLE AUG 3 1915 registered handstamps, NY transits and on the violet “Retour - Livraison Impossible a cause de la guerre” (Return because of War) Very historical . . . . . (437)	ECV \$250 - 275
27		No Lot	-
28	☒	<b>Used to Madagascar: 1914, 5¢ blue</b> (damaged) tied by NEW YORK JUNE 9 1916 duplex on a legal size envelope bearing three different OUVERT PAR L’ AUTORITÉ MILITAIRE, CONTROLE POSTAL MILITAIRE label. Per steamer “Rochambeau” and receiver on reverse. Very rare destination . . . . . (428)	ECV \$200 - 250
29	★☒	<b>1916, 2¢ carmine, type I, Farwell group 4 perfs, narrow spacing</b> , tied by CHICAGO NOV 1 1916 duplex on Farwell Co. corner card envelope ro Modesto. The John V. Farwell Company was once the largest Dry goods wholesalers in the country. Business case studies sight Farwell’s refusal to enter the retail market, as their competitors the Field Co. as the reason for their downfall; APS Cert (2006) . (482)	\$1,000
30	★☒	<b>1912, 2¢ carmine, Schermack type III perfs</b> , tied by ALCATRAZ ISLAND NOV 9 1916 duplex, from Lt. Lee H. Stewart U.S. Army, to Brooklyn, <i>purported only two known examples of this franking</i> , A.P.S. Cert (2013) . . . . . (409)	ECV \$300 - 350



31	☒	<b>1909, 3¢ deep violet, Covet/Filstrop private perf 12.67</b> , tied by MILWAUKEE WIS Nov 23 1916 duplex on envelope (small tear) to Benton Harbor. Very rare; Foundation Cert(2012) . . . . . (345 var.)	ECV \$750 - 1,000
32	☒	<b>Used to Siberia: 1911, 5¢ blue</b> , tied by SAN FRANCISCO DEC 14, 1916 duplex on “Fruit” corner card envelope bearing Russian violet “Moscow War Censorship” marking and very neat similarly worded Censor label on front and transits of 1/21 receiver . . . . . (378)	ECV \$175 - 200



23



25



24



26



28



29



30



32



- |    |   |  |                 |
|----|---|--|-----------------|
| 33 | ☒ | <b>1917, 5¢ rose error</b> , tied by SALEM OREGON OCT 24 17 duplex cancel on envelope (center crease) to Seattle. A stamp very hard to find on cover . . . . . (505)   | \$2,250         |
| 34 | ☒ | <b>Used to Azores: 1917, 2¢ rose, type I (two) and 1¢ green</b> , tied by Oakland ovals on CENSOR (label) envelope bearing OAKLAND CAL APRIL 3 1918 c.d.s., on reverse purple censor handstamp and HORTA receiver . . . . . (498, 499)   | ECV \$100 - 150 |
| 35 | ☒ | <b>1918 letter: 1917, 3¢ light violet, type I</b> , tied by SAINT LOUIS MAY 4 1918 duplex on envelope bearing violet MISSENT TO JOHNSTON BRANCH JACKSONVILLE FLA thence continuing on to NASSAU BAHAMAS, receiver on reverse where we assume the Bahama's Special Delivery and cancellation were applied. This is very similar to the earlier envelopes from Canada that were pre-applied with the Bahamas Special Delivery, this the scarcer Type I. This supposedly was for use by the Canadian Expeditionary Force, but the routing remains a mystery to us . . . . . (501) | ECV \$200 - 250 |
| 36 | ☒ | <b>1918 300 day cover: 1917, 3¢ light violet, type I</b> (very rough) tied by MIDDLETOWN CONN VOV 9 1918 duplex on rough YMCA envelope chasing a Private Randell AEP all through the American military until finally returning to the U.S. to the writer at Wesleyan S.A.T.C. Great markings . . . . (501)   | ECV \$200 - 250 |
| 37 | ☒ | <b>1918 hand drawn patriotic YMCA Registered envelope</b> (corner damage), bearing 10¢ and two 3¢ all tied by BALTIMORE ovals on front, Baltimore DEC 9 c.d.s. strikes, violet Pawtucket R.I. receiver and Camp Meade Base Hospital return address all on reverse. Very colorful. . . . .  | ECV \$150 - 200 |
| 38 | ☒ | <b>Used to Falkland Islands: 1919, 1¢ green, Offset imperf</b> , two copies (1 rough) tied by NEW YORK JAN 17 1919 duplex on rough, well travelled, envelope bearing Non Reclame label and violet "Return to Writer" (ignored), bounced around Argentina on Feb 18 before redirecting to CHILE with VALPARAISO 22 Feb receiver on reverse. An unidentified c.d.s. resides also on reverse. Very interesting . . . . . (531)  | ECV \$200 - 250 |
| 39 | ☒ | <b>1919, 3¢ violet, rotary coil waste</b> , off-center, tied by NY CITY HALL JUN 26 1919 duplex on Del. Water Gap picture post card to Canada. Used within two weeks of the 1st day of usage, this issue is actually very rare on cover and the second we have seen . . . . . (541)  | ECV \$250 - 300 |
| 40 | ☒ | <b>1917, 10¢ orange yellow and 2¢ rose, type I</b> , tied by boxed FAIRBANKS ALASKA cancel on 1919 envelope bearing Alaska JUL 1 (first day of restored rates) and Boston violet registration marks on reverse . . . . . (510, 499)  | ECV \$300 - 350 |
| 41 | ☒ | <b>Used to Russia: 1917, 15¢ gray</b> , tied by NY registered oval on envelope bearing violet May 4 1920 c.d.s. (probably NY returning mark) plus lovely P.O. Tag notifying Service Suspended and on reverse various NY 12 18 1919 departing date stamps almost six months for the return because of the Revolution . . . . . (514)  | ECV \$250 - 300 |
| 42 | ☒ | <b>Used to Bulgaria: 1917, 10¢ orange yellow and 3¢ light violet, type I</b> , tied by NEW YORK ovals on registered 2¢ entire (missing one back flap) bearing NEW YORK 1-29-1921 c.d.s. and ROUSTCHOUK receiver on reverse. Another great destination . . . . . (510, 501)   | ECV \$125 - 150 |
| 43 | ☒ | <b>Used from Hawaii: 1920, \$2 carmine &amp; black</b> , together with Washington Franklin 20¢ and 4¢ tied by HONOLULU HAWAII ovals on registered package tag bearing on reverse violet Honolulu SEP 3 1921 registered c.d.s. A far more appropriate usage than a philatelic cover . . . . . (547)   | ECV \$300 - 400 |





34



35



36



37



38



39



40



41



42



43

The "Harding" Cover



- 44 ☒ **The consummate non-philatelic, philatelic cover.** “A crank letter to the President” mailed from Cincinnati on DEC 14 1921, this complete Washington Franklin set of values 1¢ to \$1.00 plus C2 and C3 plus for good measure a 75¢ Parcel Post and 10¢ Special Delivery totalling almost \$4.00, is signed “From God Almighty, who comes to judge the living and the dead, woe be unto him who heeds not my voice and does not as I will. My will be done on Earth as it is in Heaven.” Obviously another satisfied voter. Mounted open on card. A most impressive presentation..... ECV \$1,500 - 1,750

- 45 ☒ **1921, 2¢ carmine rose, rotary coil waste**, type III (margin tear) with Special Delivery 10¢ (E11) tied by New York Jan 18 1923 duplex on Hotel envelope (file crease) bearing HINTON VA receiver on reverse; APS Cert (2005) ..... (546) \$800
- 46 ☒ **Used to Russia: 1917, 20¢ light ultramarine**, BLOCK OF FOUR tied by probable NY oval on registered envelope to Orel, bearing on reverse NY Foreign 1 23 1925 ovals, OREL and Russia transits, arriving 13 2 23. Impressive franking to a great destination ..... (515) ECV \$400 - 500
- 47 ▲ **1917, 50¢ violet, 20¢ light ultramarine and 4¢ brown**, all tied by boxed and OLYMPIA WASH JUL 13 23 duplex to the front portion of probably a large envelope to Seattle. Aa very rare genuine usage in excellent condition ..... (517, 515, 503) ECV \$150 - 200
- 48 ☒ **Used to Palestine: 1917, 7¢ black and 6¢ red orange**, tied by LOS ANGELES ovals on registered 2¢ entire bearing violet L.A. JUL 31, 1923 registered c.d.s., New York transit, and two Palestinian transits HAIFA and LUDD JUNCTION and receiver PETAH TIKVAH all on AU 29. Wonderful destination and transiting ..... (507, 506) ECV \$150 - 200



45



46



47



48

- 49 ☒ **1924, two Air Mail envelopes demonstrating 2-zone and 3-zone charges**, former 15¢ plus 1¢ (514, 498), St. Louis to San Francisco, latter 12¢ (512) two copies NY to CA. Effective July 1, 1924 the rate was 8¢/zone. . . . . ECV \$250 - 275
- 50 ☒ **1918, 3¢ violet Offset, type III or IV, BISECT**, tied by CHASE CITY APR 15 1925 duplex on First Day Cover of the 1½¢ “3rd class mail” rate. Cover has some edge toning from normal storage, still very fine and very rare . . . . . (529 or 530) ECV \$300 - 400
- 51 ☒ **Booklet Panes: 1917, 1¢ green, COMPLETE UNEXPLODED BOOKLET** (missing tabs) tied on envelope (corner damage), and post card (caverns) by respective PAGO PAGO SAMOA JUL 3 1930 and LURAY VA, SEP 25 1935 duplex strikes. A fine matched pair . . . . . (498e) ECV \$200 - 225

**Groups and Collections**

- 52 ☒ **1¢ greens**, 24 covers and 7 postcards used from 1911 to 1939, frankings from 1 copy to 12 copies, one Great Britain combination and one C.Z. great corner cards, very attractive assemblage taking years to duplicate. . . . . ECV \$700 - 1,000
- 53 ☒ **2¢ reds**, 14 envelopes used from 1909 to 1919, frankings from 2¢, 1¢ plus 2¢, to six 2¢, some wonderful advertising, one very large multi-colored, one 2c from Vera Cruz and a cute Japanese floral envelope from Madison Wis. A bisect, plus one to South Africa. Great assemblage. . . . . ECV \$600 - 800
- 54 ☒ **3¢ violets**, 9 covers, 8 singles 1 imperforate pair, all used 1918, 1919, except imperforate 1928. One to France, one to Netherlands (Feldpost) redirected to San Francisco and thence to Semahang, Java, and three nice corner cards, one multi-colored. Well worth inspection. . . . . ECV \$600 - 800
- 55 ☒ **An eclectic selection of 9 covers used between 1912 and 1933**, and a strange one bearing a 1¢ booklet pane with German/Czech stamps (not counted) in 1943. The others comprise 1¢, 4 covers including U.S. sub-Argonaut with 2¢, 1¢ plus 1¢ Pan-Pac, 1¢ 12 copies paying Special Delivery rate plus postage (1915) and 1¢ two copies. 2¢ offset 2 copies plus 1¢, 2¢ plus 2¢ Pan Am, 2¢ (409) Schermack II, 2¢ pair plus 1¢ postmarked “Top of the World Tennessee Pass” four-color envelope and a 12¢ single (REG) from Scott Stamp & Coin (1921) Quite a group. . . . . ECV \$300 - 500
- 56 ☒ **High Values: A wonderful group of twelve covers, one front used from 1911 to 1923**, comprising values 5¢ (2 copies), 6¢, 8¢ (3 copies), 9¢, 12¢, 15¢ (2 copies), 20¢ (two copies), 30¢ (front), 5 combinations, six foreign destinations including Russia, France (3), Spain, Italy. A very tough group to assemble but a wonderful nucleus of a written up collection of rates etc. . . . . ECV \$800 - 1,000
- 57 ☒ **Foreign Combination Covers: A fascinating selection of 5 envelopes**, comprising: 1910 1¢ pair & perfin G.B. 1p all tied with London Oct 31 duplex; 1913 Mex 5c, addressed in Mexico forwarded to Michigan with U.S. 2¢; 1915, tatty at top Mex 5c and Washington Franklin 2¢ tied by Mexican cancel to Nogales; 1922 postcard bearing Italy 40c bearing “Due 6 Cents” paid by Washington Franklin 6¢ cancelled ELLENVILLE NY duplex and forwarded 1923 envelope 10¢ cancelled by Paris duplex forwarded from Chicago to Pasadena with uncanceled perfined Washington Franklin 2¢. A wonderful worthy of further analysis. . . . . ECV \$300 - 400
- 58 ☒ **Eight covers and one picture post card** (Due to Newfoundland), very clean selection, values to 10¢, destinations include two to Germany, one to Prague (Austria), Hungary, Spain (Wilwaukee label on reverse) and to Switzerland with Due stamps. Very nice. . . . . ECV \$500 - 750



49



50



Ex 51



Ex 52



Ex 53



Ex 54



Ex 55



Ex 56



Ex 57



Ex 58



Ex 59

- 59 ★○☒ **1919, 1¢ gray green Offset, perf 12½**, distinctive collection of this rare and short lived issue. This small group comprises four singles, two blocks of 4, used and never hinged, nine plate blocks of 6, a corner block of 6 with “halo” arrow below corner copy, five post cards and five covers bearing two blocks of (2) pairs four, one originating in Siberia. Almost all stamps are never hinged and the covers in excellent condition catalogue \$6,000.00 with no premiums . . . . . (536) ECV \$2,500 - 3,500
- #536 was issued on August 19, 1919 and withdrawn 3 months later on November 30, 1919. The remaining stock of several hundred thousand were destroyed.*
- 60 ☒ **State Fairs: 3 covers**, comprising 1) NY State Fair 1909 all over racing horses; 2) 2¢ Syracuse Aug 12 1909, Berlin Conn 1911 horse, 2¢ Nov 3 1911; Ka-noo-no Karnival & State Fair all over red and blue: 3) 2¢, Rochester Aug 9 1912. A lovely trio. . . . . ECV \$350 - 400
- 61 ☒ **Mexican Revolutionary War: Three Washington Franklin covers of 1916-17**, 1) 1¢ (pair) Nogales Sept 11 1916 to New Haven (with YMCA letter) 2) 2¢, Columbia N.M. Nov 14 1916 from a Captain. 3) 2¢, on top of Mexico 10c Laredo Mar 8-17 (Mexican stamps were not internationally used during the War) A very nice trio.. . . . ECV \$175 - 200
- 62 ☒ **Schermack Type III, group of thirteen 1¢ and eight 2¢**, each pre-cancelled NEW YORK, NY and on an ALEXANDER HAMILTON INSTITUTE envelope containing generally two pamphlets being transcribed “Talks” or “Lectures” of economic content. Used in the late 19 teens to early 1920’s. Some a bit rough. Also eight other envelopes bearing unperforated philatelic and fascinating reading. . . . . ECV \$300 - 400



Ex60



Ex61



Ex 62

**Special Delivery**

*See lot number 3 for a very early special delivery cover*

- 63 ☒ **1885, 10¢ blue**, fine, together with 2¢ red tied by segmented cork on small envelope bearing NORTH VASSALBOROUGH ME DEC 18 on front, and Bangor & Boston R.P.O.D.L. Dec 8 1890 c.d.s. on reverse to N.Lincoln Me. A rare origin ..... (E1) ECV \$125 - 150
- 64 ☒ **1893, 10¢ orange** (SE), with Columbian 2¢, tied by EAST CAPITAL STA AUG 1 1893 duplex strikes on small local envelope bearing rare red "IMPORTANT! receiver should sign and enter time of delivery" handstamp ..... (E3) ECV \$350 - 400
- 65 ☒ **1893, 10¢ orange**, with Bureau 2¢, tied by WORCESTER SEP 18 1893 duplex on pretty Boiler corner card envelope (Worcester Steam Heating Co) (tear at top), bearing very early blue SPECIAL DELIVERY clock handstamp to Boston ..... (E3) ECV \$150 - 200
- 66 ☒ **1893, 10¢ orange**, with Columbian 2¢, cancelled by segmented cork on Horse corner card envelope bearing PORTSMOUTH & CONCORD RPO Oct 4 1893 c.d.s. to Manchester N.H. Nice combination of horses and railroads ..... (E3) ECV \$350 - 400



63



64



65



66

- 67 ☒ **1894, 10¢ blue, unwatermarked**, with Bureau 2¢, tied by NEW YORK MADISON SQUARE SEP 18 99 duplex strikes on Liberty corner card to (Fordham) University Heights. A lot of money to go about 8 miles . . . . . (E4) ECV \$200 - 250
- 68 ☒ **1895, 10¢ blue**, tied together with appropriate, but rarely seen, Trans-Mississippi 2¢ (286) tied by SPRINGFIELD MASS OCT 13 1893 WEBSTER's corner card envelope bearing violet Special Delivery info handstamp on reverse. Most attractive . . . . . (E5) ECV \$125 - 150
- 69 ☒ **1895, 10¢ blue**, 1 October, with Bureau 2¢, tied by ALLENTOWN JUN \_ 01 duplex cancels on H. LEH & CO Boots and Shoes elaborate corner card envelope (small rub spot) to MAUCH CHUNK PA. 1 receiver on reverse. Very attractive . . . . . (E5) ECV \$100 - 150
- 70 ☒ **1902, 10¢ ultramarine (1909 re-issue)**, tied by PEKIN ILL. AUG 10 1910 duplex with pre-cancelled 1¢ due on comedy picture post card bearing pencil "Due 1¢", neat combination. We determined the Re-issue status mostly by the late usage, 2 years after the "Merry Widow" issue . . . . . (E6) ECV \$150 - 175
- 71 ☒ **1908, 10¢ green**, with Washington Franklin 2¢, tied by EGG HARBOR CITY N.J. MAR 22 1910 duplex on Dry Goods envelope bearing Philadelphia & Atlantic City R.P.O. plus Philadelphia transit plus Utica Mar 23 receiver on reverse. Excellent usage . . . . . (E7) ECV \$250 - 300
- 72 ☒ **1908, 10¢ green**, tied by \_ SEP 23 1910 duplex on 2¢ red stationery bearing Fee Paid Boston and on reverse Keene & So Vernon - Newport & Spraing, Boston & Albany, all September 23 R.P.O.'s and Springfield Terminal September 24 R.P.O. to East Braintree Mass. A travelled and documented cover with letter . . . . . (E7) ECV \$250 - 300
- 73 ☒ **1908, 10¢ green**, together with Washington Franklin 1¢ booklet pane with tab all tied by BENTON HARBOR MICH JUNE 8 1915 duplex's on legal size envelope bearing Chicago receiver and neat label on reverse . . . . . (E7) ECV \$200 - 300
- 74 ☒ **1911, 10¢ ultramarine**, together with 10c Registry (F1) and Washington Franklin 2¢, all more or less tied by YONKERS ovals on registered envelope bearing violet Yonkers May 4, 1912 c.d.s. and Baltimore receiver. Wonderful combination . . . . . (E8) ECV \$150 - 175
- 75 ☒ **Used from Canada: 1911, 10¢ ultramarine**, with Canada Admiral 2¢ (2SE) former tied by purple oval, latter by WINNIPEG MAN Nov 14, 1912 duplex on envelope (some tears) bearing on reverse St. Vincent & St. P. R.P.O. transit and Saginaw receiver. Nice usage . . . . . (E8) ECV \$200 - 300
- 76 ☒ **Used from Costa Rica: 1911, 10¢ ultramarine**, with Costa Rica 10c, the former tied by "killer" cancel on envelope (stain) bearing San Jose ENT8 cancel and NY JAN 18 1913 receiver on reverse . . . . . (E8) ECV \$200 - 250



67



68





69



70



71



72



74



73



75



76

- 77 ☒ **Used from Colombia: 1911, 10¢ ultramarine**, with Colombia 5c, the former tied by New York Feb 3 1913 duplex on envelope bearing “por vapor *Westerwald*” and usual “fee claimed”. Very rare combination . . . . . (E8) ECV \$200 - 250
- 78 ☒ **1911, 10¢ ultramarine**, with Washington Franklin 2¢ (SE) tied by GOSHEN NY Nov 2 duplex on 1913 envelope to Goshen re-addressed to Jersey City, returned “unclaimed” to sender in NYC. An interesting tour of the area . . . . . (E8) ECV \$175 - 200
- 79 ☒ **Used in Canada: 1911, 10¢ ultramarine**, with Canada Admiral 2¢ tied together by BRANTFORD NOV 6 1914 duplex on advertising corner envelope bearing Michigan receiver on reverse . . . . . (E8) ECV \$250 - 300
- 80 ☒ **Official Ballot Envelope: 1911, 10¢ ultramarine** (corner off) together with Washington Franklin 7¢ & 5¢ all tied by purple “Special Delivery” strikes on 1923 registered envelope from Bayard Neb to Deadwood S.D. A most unusual and important usage . . . . . (E8) ECV \$150 - 175
- 81 ☒ **1911, 10¢ ultramarine**, an excellent remainder collection of three covers and three postcards all addressed within the U.S., comprising additional frankings of Washington Franklin 1¢ (3), 2¢ (2) and a 1¢ McKinley card used, 1913; 1914, 1 card with PORT HURON & CHI R.P.O. and another almost all over advertising for Old Orchard Me . . . . . (E8) ECV \$600 - 800
- 82 ☒ **Used from England: 1916, 10¢ pale ultramarine**, two Great Britain 1d’s tied by PERTH 24 JY 17 c.d.s. strikes with 10¢ (SE) tied by NY AU7 1917 on Censored envelope bearing NY receiver on reverse and non-delivered handstamp. Letter picked up at office . . . . . (E10) ECV \$300 - 350
- 83 ☒ **1916, 10¢ pale ultramarine**, remainder collection of three envelopes. Two 2¢ entires (2 legal) used within U.S. comprising additional franking of 1¢, 2¢ and 4¢, one 10¢ a jumbo, fine group . . . . . (E10) ECV \$250 - 300
- 84 ☒ **1914, 10¢ ultramarine and 1916, 10¢ pale ultramarine**, the remainder of 5 envelopes (1 stained) all addressed within the U.S. comprising additional frankings of Washington Franklin 1¢ and 2¢, 2¢ (2), 10¢ plus 2¢, Pan Pacific 2¢ (2) all used 1915-1917. A colorful group . . . . . (E9, E10) ECV \$350 - 400

**1917 10¢ Ultramarine, Perf. 11**

- 85 ▲ **1917, 10¢ ultramarine**, combination piece: 10¢ together with Washington Franklin 30¢ and I.R. 2¢ Documentary all tied by undated BOSTON ovals on undated remainder piece of a large post WWI envelope. An excellent three issue franking . . . . . (E11) ECV \$150 - 200
- 86 ☒ **Reversible Mailing Card: 1917, 10¢ ultramarine** (folded) with Washington Franklin 50¢ (surface rubs) and 11¢ pair, tied on undated card to Cleveland OH. First we have seen one of these . . . . . (E11) ECV \$150 - 200



77



78



79



80



81



82



83



84



85



86

- 87 ☒ **Wrapper Usage: 1917, 10¢ ultramarine**, together with Washington Franklin 2¢ pair (one damaged) tied by NEW YORK OC10 1917 WASHINGTON duplex strikes on possible unique wrapper for probably a cardboard tube as addressing wraps around to Washington DC readdressed to Philadelphia. A fascinating construction for an envelope . . . . . (E11) ECV \$200 - 250
- 88 ▲ **Used from Canada: 1917, 10¢ ultramarine**, with Canada Admiral 20¢ & 2¢ (2) and 1917 "Fathers" 3¢, tied by Montreal Oct 12 17 duplex strike on piece of package. Very rare and colorful combination . . . . . (E11) ECV \$200 - 250
- 89 ☒ **Combination cover: 1917, 10¢ ultramarine**, with Washington Franklin 3¢ tied by CHICAGO FEB 21, 1918 duplex on large envelope bearing violet POSTAGE DUE 3 Cents and corresponding precancelled FREEMONT NEBR 1¢ & 2¢ Postage Due stamps. A colorful combination . . . . . (E11) ECV \$150 - 200
- 90 ☒ **U.S.S. Indiana usage: 1917, 10¢ ultramarine**, with Washington Franklin 3¢ violet tied by U.S. Navy duplex MAR 1 1918 envelope to NYC. Rare usage . . . . . (E11) ECV \$175 - 200
- 91 ☒ **1917, 10¢ ultramarine**, together with Washington Franklin 10¢ and 3¢ (13¢ postage) - tied on Sept 1918 registered envelope from Muscle Shoals, Ala to Indianapolis . . . . . (E11) ECV \$150 - 200
- 92 ☒ **1917, 10¢ ultramarine**, tied by WORCESTER DEC 12 MASS duplex on 1918 envelope bearing New York receiver subsequent (on reverse) red OFFERED AT ADDRESS missing only. "12/14" and "not there" NY in circle thence red "Forward by office of first address" - which is Worster. Well documented cover . . . . . (E11) ECV \$200 - 250
- 93 ▲ **1917, 10¢ ultramarine**, with Washington Franklin 20¢ (7), 5¢ (3), 4¢ all tied by BALTIMORE MD JAN 10 1919 duplex strikes on portion of package. Very high \$1.59 franking . . . . . (E11) ECV \$300 - 400
- 94 ☒ **1917, 10¢ ultramarine**, together with 13¢ and 2¢ (2) (17¢ postage) tied by April 1919 to tag, NYC to Watertown . . . . . (E11) ECV \$175 - 200
- 95 ☒ **Used in Canada: 1917, 10¢ ultramarine**, with Canada Admirals 2¢ & 5¢ tied by MONTREAL AUG 25 19 c.d.s. strikes on legal envelope (file fold) bearing New York receiver on reverse. Colourful combination . . . . . (E11) ECV \$200 - 250
- 96 ☒ **1917, 10¢ ultramarine**, tied by Philadelphia Dec 24, 1919 c.d.s. strikes on 2¢ green letter sheet to Utica N.Y. Possibly a unique usage . . . . . (E11) ECV \$200 - 250



87



89



88



90



91



93



92



94



95



96

- 97 ☒ **1917, 10¢ ultramarine**, together with Washington Franklin 12¢ (512) tied by City Hall oval on registered envelop bearing NYC Jan 6 1920 c.d.s., to Albany . . . . . (E11) ECV \$125 - 150
- 98 ☒ **1917, 10¢ ultramarine**, tied by SMITHVILLE BRANCH NY JUL 31 1920 duplex on 2¢ on 3¢ revalued stationery to NYC. A very rare combination. . . . . (E11) ECV \$125 - 150
- 99 ☒ **1917, 10¢ ultramarine**, together with Washington Franklin 2¢ and OFFICIALLY SEALED label by Cleveland Aug 9 1920 duplex on envelope (few tears) to NYC a very scarce 3 issue cover . . . . . (E11) ECV \$120 - 200
- 100 ☒ **1917, 10¢ ultramarine**, together with Washington Franklin 10¢ and 2¢ (2) (14¢ postage) tied on Jan 21 1921 registered envelope from Syracuse NY to Pittsburgh . . . . . (E11) ECV \$125 - 150
- 101 ☒ **Rare Combination: 1917, 10¢ ultramarine**, with Washington Franklin 3¢ offset (529) and 7¢ flat plate (507) tied by probably Galveston Tex cancel Mar 1 1921 on registered 2¢ stationery with Mass receiver on reverse. A fabulous combination by all standards . . . . . (E11) ECV \$150 - 200
- 102 ☒ **1917, 10¢ ultramarine**, with 4¢ brown, tied by ROANOKE VA TRANS CLK Jul 19 1927 duplex cancels on envelope to Boston. The 10¢ bears an indecipherable perfin and the 4¢ an "N&W" security perfin representing the No. & W. Railway Co., the addressor. Quite interesting . . . . . (E11) ECV \$100 - 150
- 103 ☒ **1917, 10¢ ultramarine on pink paper**, with 3¢ violet tied by MONTPELIER VT Nov 1 1935 duplex on envelope to Mass. A recognized variety . . . . . (E11 var.) ECV \$150 - 200
- 104 ☒ **Postal Cards: 1917, 10¢ ultramarine**, three different variations: 10¢ (damaged) on undated PPC with 1¢ commemorative. Boston to Portsmouth; 10¢ no postage, hence red Due handstamp 1917 Pasadena to Jamaica Plain Flats, and 10¢ with Washington Franklin on 1919 picture post card Lake Placid to NYC. Excellent for exhibition . . . . . (E11) ECV \$400 - 500
- 105 ☒ **Hotels: 1917, 10¢ ultramarine**, 3 envelopes: 10¢ with Washington Franklin 13¢ on December 1918 registered envelope Philadelphia to Cleveland; 10¢ together with Washington Franklin 10¢ & 3¢ on 1920 registered envelope Dallas to Tulsa; 10¢ with Washington Franklin 2¢ on undated all over envelope on front with cute "Ring Bell Hard Please" Clearfield PA to Erie. The communication was used by salesmen in hotels as quick communication to announce their arrival as it was much cheaper than telephone. 1st e-mail. . . . . (E11) ECV \$350 - 450
- 106 ☒ **Patriotic: 1917, 10¢ ultramarine**, 3 envelopes; comprising 10¢ with Washington Franklin 3¢ tied on 1917 flag envelope Plattsburg NY to Worcester Mass; 10¢ with Washington Franklin 2¢ tied on 1917 flag envelope Camp Darling Mass to Lynn Mass; 10¢ with Washington Franklin 3¢ tied on 1918 K.O.C. War Activities Brooklyn to Rochester . . . . . (E11) ECV \$500 - 750



97



98



99



100



101



102



103



Ex 104



Ex 105



Ex 106

- 107 ☒ **Two Registered Envelopes: 1917, 10¢ ultramarine**, 1) 1917 Nov 7, 5th day of war rate with Washington Franklin 3¢ Fitchburg Mass to Meriden CT and 2) 1918 Military with Washington Franklin 10¢ & 3¢ New Rochelle Ft. Slocan (an Island) May 15 to Worchester Mass. Nice pair of different rates for the period . . . . . (E11) ECV \$125 - 150
- 108 ☒ **1917, 10¢ ultramarine**, the remainder collection of four covers and one package front (rough), 1917, 1918, 1922, 1923 front 1919, Washington Franklin frankings including respectively 2¢, 3¢ imperforate pair 1¢, 2¢ and 3¢ (3) plus 1¢ (front) Very nice group . . . . . (E11) ECV \$600 - 800
- 109 ☒ **1925, 15¢ deep orange and 20¢ black**, together with Special Handling 25¢ (QE4) and Washington Franklin 2¢ tied by NEWTOWN, PA JUL 13 1925 duplex on envelope with different Newtown cancel and on reverse Philadelphia transit to Ship Bottom, NJ. Wonderful combination, a bit hard to decipher . . . . . (E13, E14) ECV \$250 - 300

**1925 Post Office Truck 20¢ Black**

*The U.S. entered into various special delivery treaties with foreign governments on and after January 1, 1923 (Canada) The only first days were sent by Henry Hammelman of the Pioneer Stamp Company; he was an insider. It is believed that he made 3-5 of each which were sent to the foreign countries using envelopes and sometimes postal cards. These are seldom offered. The following three treaties commenced on October 1, 1926.*

- 110 ☒ **Used to Denmark: 1925, 20¢ black**, with 1923 3¢, both tied by WASHINGTON D.C. OCT 1 1926 duplex on 2¢ entire bearing red penned Express, and on reverse SVEBOLLE 12-10-26 receiver. . (E14) ECV \$750 - 1,000
- 111 ☒ **Used to the Netherlands: 1925, 20¢ black**, with 1923 1¢ both tied by WASHINGTON D.C. OCT 1 1926 duplex on U.P.U. 1¢ Postal Card bearing red penned Express, misc. manuscript notations boxed "791" & "797" and ROTTERDAM receiver. . . . . (E14) ECV \$750 - 1,000
- 112 ☒ **Used to Sweden: 1925, 20¢ black**, with 1923 1¢ both tied by WASHINGTON D.C. OCT 1 1926 duplex on 2¢ with UPU Postal card bearing red penned EXPRESS and on reverse STOCKHOLM 14-10-26 receiver. . . . . (E14) ECV \$750 - 1,000
- 113 ☒ **Non First Day Cover Used to Argentina: 1925, 20¢ black**, with 1923 50¢ (570) and Air 5¢ (C12) all tied by BOSTON AUG 27 1930 duplex strikes on envelope (crease) bearing violet A.M.F.ATL GA AUG 27 1930 c.d.s. transit and AEROPOSTAL B.A. duplex all reverse. Nice combination . . . . (E14) ECV \$200 - 250
- 114 ☒ **1951, 20¢ black**, two covers; 20¢ tied by Washington D.C. Jan 26 1953 duplex on blue Diplomatic Mail Free envelope from El Salvador Embassy to Secretary of State 2) 20¢ together with G.B. Elizabeth 1s3d pair tied by London 1953 duplex on air mail envelope bearing Pasadena Dec 26 receiver on reverse. Two very uncommon usages . . . . . (E19) ECV \$125 - 150
- 115 ▲ **Offices in China, 1919, \$1 on 50¢ light violet** (off center) tied by oval on registered front portion of package bearing violet SHANGHAI OCT 2, 1922 c.d.s. and separate portion bearing OCT 24, 1922 CALIF transit to Memphis. An appropriate usage of this high value stamp . . . . . (K15) \$1,000 for used stamp only



Ex 107



Ex 108





109



110



111



112



113



Ex 114



115

1873 Official Issues

Essays, Proofs, Trial Colors

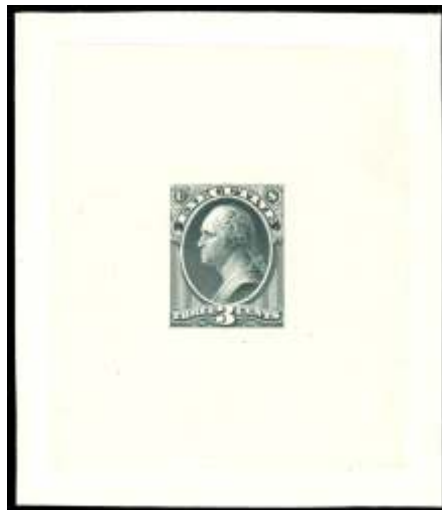
116	TC	<b>Executive Dept., 1873, 2¢ deep brown, trial color large die proof, on India die sunk on card, 75x87mm, extremely fine, Ex Earl of Crawford . . . . . (O11TC1af)</b>	\$500
117	TC	<b>Executive Dept., 1873, 3¢ black, trial color large die proof, on India die sunk on card, 75x88mm, extremely fine . . . . . (O12TC1ae)</b>	\$500
118	TC	<b>Executive Dept., 1873, 3¢ deep green, trial color large die proof, on India die sunk on card, 75x88mm, extremely fine . . . . . (O12TC1af)</b>	\$500
119	TC	<b>Justice Dept., 1873, 1¢ and 90¢ values, Atlanta plate proofs on card, 1¢ the set of five colors, 90¢ the set of four colors, extremely fine . . . . . (O25TC4, O34TC4)</b>	\$345
120	TC	<b>Navy Dept., 1873, 2¢ deep green, trial color plate proof on gummed wove, imperf, extremely fine . . . . . (O36TC5a var.)</b>	ECV \$180 - 190
121	TC	<b>Navy Dept., 1873, 2¢ black, trial color plate proof on wove, privately perforated, ungummed, well centered, very fine . . . . . (O36TC6b)</b>	\$250
122	TC	<b>Navy Dept., 1873, 2¢ black, trial color plate proof on wove, imperferate variety on ungummed paper, HORIZONTAL PAIR, very fine. \$500 as perforated . . . . . (O36TC6b var.)</b>	ECV \$400 - 500
123	E	<b>Post Office Dept., 1873, 1¢ brown black, large die essay on ivory glazed paper, 52x56mm, very fine . . . . . (O47E-1c)</b>	\$1,750
124	E	<b>Post Office Dept., 1873, 1¢ orange red, large die essay on ivory glazed paper, 63x74mm, incredibly rare this large, extremely fine . . . . . (O47E-1c)</b>	\$1,750
125	E	<b>Post Office Dept., 1873, 2¢ orange red, large die essay on ivory glazed paper, 41x43mm, very fine . . . . . (O48E-1c var.)</b>	\$1,750
126	E	<b>Post Office Dept., 1873, 2¢ gray black, large die essay on ivory glazed paper, 34 x 38mm, unlisted colour, very fine . . . . . (O48E-1c var.)</b>	\$1,750 as normal



116



117



118

- 127 TC **Post Office Dept., 1873, 2¢ deep brown, trial color large die proof, on India die sunk on card, 78x95mm, very fine . . . . . (O48TC1ae) \$500**
- 128 E **Post Office Dept., 1873, 3¢ brown black, large die essay on ivory glazed paper, 63x76mm, showing unusual die striking line at bottom; mounting thin spot on back only, still very fine . . . . . (O49E-4c) \$1,750**
- 129 E **Post Office Dept., 1873, 3¢ blue, large die essay on ivory glazed paper, 54x61mm; trace of soiling at bottom right, still very fine . . . . . (O49E-4c) \$1,750**



Ex 119



120



121



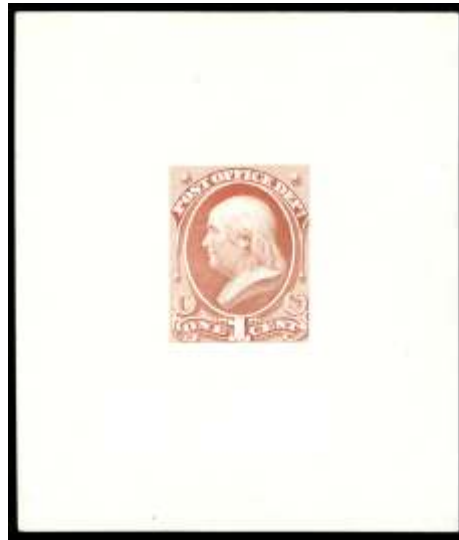
122



125



123



124



126



127



128



129

130	E	<b>Post Office Dept., 1873, 3¢ orange red, large die essay on ivory glazed paper, 50x55mm, very fine</b> ..... (O49E-4c)	\$1,750
131	TC	<b>Post Office Dept., 1873, 3¢ deep green, trial color large die proof, on India, die sunk on card, 72x83mm, extremely fine</b> ..... (O49TC1ae)	\$500
132	E	<b>Post Office Dept., 1873, 90¢ Perry essay, in orange red, complete design, die on white ivory paper, 50x55mm, very fine</b> ..... (O56-E1c)	\$1,750
133	TC	<b>State Dept., 1873, 2¢ black, trial color large die proof, on India die sunk on card, 73x81mm, very fine</b> ..... (O58TC1ae)	\$500
134	TC	<b>State Dept., 1873, 2¢ deep brown, trial color large die proof, on India die sunk on card, 74x88mm, extremely fine</b> ..... (O58TC1af)	\$500
135	TC	<b>State Dept., 1873, 3¢ black, trial color large die proof, on India die sunk on card, 73x89mm, extremely fine</b> ..... (O59TC1ae)	\$500
136	TC	<b>State Dept., 1873, 90¢ black, trial color large die proof, on India die sunk on card, 74x88mm, very fine</b> ..... (O67TC1ae)	\$500
137	P	<b>Justice Dept., 1873, 1¢-90¢ complete, plate proofs on India, very fine</b> ..... (O25P3-O34P3)	\$200
138	P	<b>Officials, 1873 issues nearly complete, plate proofs on card, except War Department 90¢ (O93P4), mounted on Lighthouse hingeless pages with three original envelopes, generally very fine</b> ..... (O1P4-O92P4)	\$830
139	S	<b>1875 Special Printing, Executive Dept., 2¢ carmine, overprinted "Specimen", un gummed; pre-printing paper fold, very fine</b> ..... (O11SD)	ECV \$200 - 250
140	S	<b>1875 Special Printing, Executive Dept., 1¢ carmine, overprinted "Specimen", ribbed paper, with small dotted "i", un gummed, fine, a very rare stamp</b> ..... (O10SDb)	\$500
141	★○	<b>Officials, primarily used collection, comprising 35 cancelled, a great many fancy and colored, five o.g. and four plate proofs, various small faults but, many very fine plus, one jumbo, etc. Hard to duplicate group</b> .....	ECV \$500 - 600
142	☒	<b>Officials, a select group of six covers, all with Departmental corner card envelopes, comprising two Department of Interior, three Department of War and one Treasury Department, nice destinations, rare selection, hard to duplicate</b> .....	ECV \$600 - 700



130



131



132



133



134



135



Ex 137



Ex 138



139



140



Ex 141



136



Ex 142

1913 Parcel Post Issue

- 143 ☒ **Used to Australia: 1913, 1¢ carmine rose**, five (5) copies tied by 1914 BUFFALO APR24 c.d.s. strikes on small envelope bearing Queensland receiver on reverse. Very rare usage . . . . . (Q1) ECV \$100 - 150
- 144 ☒ **Used from Vera Cruz: 1913, 1¢ carmine rose**, imprint PAIR tied by VERA CRUZ AUG 15 U.S. M.A.G. duplex on advertising corner card. to Morristown N.J. . . . . (Q1) ECV \$100 - 150
- 145 ☒ **Used to Somali Coast: 1913, 1¢ carmine rose and 2¢ carmine rose**, tied by two different PHILADELPHIA APR 1 1916 duplex cancels on 2¢ envelope bearing DJIBOUTI 5 SMAI 1916 receiver on reverse and another on 22 MAI sealed by lovely Philadelphia Stamp Club label. A fantastic destination and quite colorful . . . . . (Q1, Q2) ECV \$300 - 400
- 146 ☒ **1913, 2¢ carmine rose**, two singles (perforation faults) tied by Florida Feb duplex on undated ingenious paper bag wrapper (?) to Kirkland Me. Facinating usage and temperature extremes . . . . . (Q2) ECV \$100 - 150
- 147 ☒ **Used from Great Britain: 1913, 2¢ carmine rose**, used with Great Britain 1d red, and Washington Franklin 1¢, all tied by various cancel on small 1913 envelope traveled London Sept 26, NY Sept 29, readressed to NY Oct 15, and finally Luzern, Switzerland Oct. 26 address also crossed out. A wonderful trip and use of the Parcel Post and Washington Franklins . . . . . (Q2) ECV \$300 - 350
- 148 ☒ **1913, 2¢ carmine rose and 3¢ carmine rose**, two covers: 2¢ (SE) tied by STAMFORD JUL 20 1913 duplex from the old Nutmeg Stamp Co in Stamford CT and 2) 2¢ and 3¢ tied by PITTSBURG SEPT 20 1913 duplex on SCHENLEY HOTEL corner card envelope to Sweden. A fine duo of rates . . . (Q2, Q3) ECV \$100 - 125
- 149 ☒ **1913, 2¢ carmine rose and 5¢ carmine rose**, two covers: 2¢ tied by SPRINGFIELD JUL 7 1913 duplex on petite envelope to Hartford (the 1st week of 1st class use) and 5¢, 2 SE copies with the Washington-Franklin 2¢ tied by WASHINGTON c.d.s. strikes on 1914 registered envelope bearing Baltimore Feb 4, 1914 receiver on reverse. . . . . (Q2, Q5) ECV \$100 - 125
- 150 ☒ **Used to England: 1913, 3¢ carmine rose**, block of four (2SE) on reverse plus Washington Franklin 2¢ red (406) SE pair, on front all tied on registered 2¢ red stationery by boxed NORWICH CT cancels numerous NY 8-28-1913 foreign ovals and possible receiver on reverse. Very impressive . . . . . (Q3) ECV \$125 - 150
- 151 ☒ **Used to London readdressed to Montreux, Switzerland: 1913, 5¢ carmine rose**, tied by CHICAGO JUN 15 duplex on envelope bearing LONDON 23 JUN 14 transit, with a Territat Switzerland receiver on reverse. Mailed from the Marion Green office of the famous Basso Cantante to Mr. Green. Great Opera item . . . . . (Q5) ECV \$100 - 150
- 152 ☒ **Used to Germany: 1913, 10¢ carmine rose**, 10¢ (SE) with Washington Franklin 5¢ (378) cancelled by targets on registered envelope from PITTSBURG (JAN 1914) via New York and sealed by red SOCIALIST CAMPAIGN STAMP. Interesting cover . . . . . (Q6) ECV \$150 - 200



143



144



145



146



147



148



149



150



151



152

- 153 ☒ **Used to Russia and returned: 1913, 15¢ carmine rose**, off center, tied by KENOSHA, WIS oval on envelope bearing manuscript "Retoure" and D.D.L. Record MAY 12 1915 in box on reverse NY 10-12 1914 outgoing transit, Russia receiver and corresponding 1915 incoming transit. Quite a trip - 7 months ..... (Q7) ECV \$175 - 200
- 154 (☒) **1913, 20¢ carmine rose**, with Washington Franklin 2¢ red tied by probable New York duplex on front, bearing violet First Class on front and Mar 25 1913 Washington partial waybill on reverse. To the Olympia, Wash. Superior Court clerk, probably a book shipment. Very rare ..... (Q8) \$750 on full cover
- 155 ☒ **1913, 25¢ carmine rose** (crease) with Washington Franklin 3¢ tied by NEW YORK registered ovals on undated J.M. BARTELS large corner card front of large envelope bearing RETURN RECEIPT REQUESTED to Cambridge Mass. .... (Q9) ECV \$300 - 350
- 156 ☒ **1913, 25¢ carmine rose**, together with Pan Pacific 10¢ orange yellow (400) (SE) and Washington Franklin 1¢ green, all tied by ALBANY, NY ovals on package label to Olympia, Washington. A wonderful combination and appropriate usage ..... (Q9) ECV \$350 - 400



- 157 ☒ **1913, 50¢ carmine rose**, fine copy bearing two private security perfins (in the shape of "pac-man") tied by two cancels one bearing a circular with a large NY, on neat corner card "Wendel Photographic Art Studio" of NYC envelope (8 1/4 x 5 3/4) to Johnstown NY with a "DO NOT BEND" handstamp. Inside there is a transfer on the back portion of the envelope showing three young boys. Unpriced on cover ..... (Q10) ECV \$2,000 - 3,000

*This is quite extraordinary as the cover certainly is in period usage as the Wendel company was in business at this address starting in 1902 through the late teens.*

**Groups**

- 158 ☒ **Used to foreign destinations: a fine group of three envelopes & 3 picture post cards**, to England (2), Belgium (2) one rough, Germany and Switzerland (stamp damaged) 1¢, 2¢ and 5¢ Franklins. A good group all used 1913 & 1914 ..... ECV \$350 - 400
- 159 ☒ **Group of three**, comprising 2¢, SEP 1913 ME to MASS, 3¢ NO 1917 (new rate) NEB to CAL and 4¢ picture post card (4¢ overpayment) JUL 1913 MASS to MASS, all very fine..... ECV \$150 - 175
- 160 **Documents**, 2 slightly different copies of the P.O.D. Parcel Post Rates & Regulations plus a very rare map of the United States 26"x16" showing Parcel Post Zones, Express Zones and Federal Reserve Bank Districts as distributed by Colliers. The map is most impressive (photo on web site) ..... ECV \$350 - 400





153



154



155



156



Ex 158



Ex 159

**1913 Parcel Post Postage Due Issue**

- 161 ☒ **Used from Japan: 1913, 1¢ dark green**, tied by smudge, with Japan 3s and US 3¢ Due pair on 1913 corner card envelope bearing U.S. CHARGE TO COLLECT “7” CENTS handstamp probably from Kandaku. A very interesting combination of different due issues . . . . . (JQ1) ECV \$200 - 250
- 162 ☒ **1913, 1¢ dark green**, tied by pencil stroke with Washington Franklin 2¢ tied by DEC 24 LOS ANGELES 1913 Pre-Pan Pacific Exposition duplex on envelope bearing violet ADVERTISED DUE 1 CENT, manuscript “Not Here” and “opened by mistake” and REDLANDS CAL receiver. A busy letter . . . . . (JQ1) ECV \$175 - 200
- 163 ☒ **1913, 1¢ dark green**, tied by indistinct oval with Washington Franklin 1¢, 2¢, tied by probable BOSTON 1914 duplex on local envelope bearing blue Special Delivery clock for some reason Due 1 handstamp. This local cover must have been overweight to need a 4¢ double rate postage. Nice combination . . . . . (JQ1) ECV \$150 - 175
- 164 ☒ **Used from Russia: 1913, 1¢ dark green**, precancelled on 3¢ postal card with additional tied 1r stamp, card bearing NEW YORK JAN 1915/DUE 1 receiver and violet Russian “D.Ts.U.” handstamp. Scarce origin (Nevel Viteb) and time period . . . . . (JQ1) ECV \$350 - 400
- 165 ☒ **1913, 1¢ dark green**, plus Due 2¢ tied by AGENCY MO MAY 15 1918 large c.d.s. with Washington Franklin 3¢ and 1¢ imperforate tied by LAWTON OKLA FT. SILL BRANCH MAY 10 1918 duplex on envelope bearing manuscript. Due\_\_ (?) Nice combination . . . . . (JQ1) ECV \$125 - 150
- 166 ☒ **1913, 2¢ dark green**, tied by blurred oval on legal 2¢ entire cancelled by indistinct ERONA PA 1916 or 1918 c.d.s. to Buttler PA. The 2¢ value is possibly the scarcest of the Due values and the only one in this collection . . . . . (JQ2) ECV \$175 - 200



- 167 ☒ **Used from Great Britain: 1913, 5¢ dark green**, undated package label to U.S. bearing pre-cancelled 5¢ due, together with G.B. Seahorse 2/6 (corner crease) and 9d tied by blue red cancels. In addition there is a large 5 pointed star with a cross in the middle and a large manuscript 139. Most certainly a unique usage; Foundation Cert (2009) . . . . . (JQ3) ECV \$1,250 - 1,500
- 168 ☒ **Used from Colombia: 1913, 5¢ dark green**, 3¢ Due tied by BOSTON ovals on envelope (trimmed at top) bearing Colombia 1c green D57 in circle handstamp and New York AU 7 1913 / DUE 8 CENTS receiver . . . . . (JQ3) ECV \$175 - 200
- 169 ☒ **Used from Greece: 1913, 5¢ dark green**, precancelled pair on reverse of elaborate “Greek Army Envelope” bearing HUDSON TERMINAL NY AUG 23 1913 / DUE 10CENTS transit to Louisville KY. Very unusual . . . . . (JQ3) ECV \$250 - 300



161



162



163



164



165



166



168



169

170	✉	<b>1913, 5¢ dark green, PAIR</b> with Washington Franklin 1¢ two copies (one damaged) tied by grids on registered envelope (stains) bearing red crayon 1/14 and violet registered on front, with EFFA ARK JAN 12 1914 (origin) and violet St. Louis receiver on reverse. An improper use of the dues to pay the registration . . . . . (JQ3)	ECV \$200 - 250
171	✉	<b>Used from South Africa: 1913, 5¢ dark green and 1¢ dark green</b> , cancelled on envelope bearing South Africa ½d pair tied by JOHANNESBURG JUL 23 1914 duplex, T 30 CENTIMES in Octagon and COLLECT POSTAGE 06 CENTS handstamps to Brooklyn NY. Incredibly rare origin . . (JQ3, JQ1)	ECV \$275 - 300
172	✉	<b>1913, 5¢ dark green</b> , precancelled, with Washington Franklin 2¢, 2 copies tied by TOLEDO JUN 23 1916 or 1918 duplex on large corner card envelope (back flap missing) bearing crayon Due 5¢, to Sandusky, OH. A 3x rate . . . . . (JQ3)	ECV \$200 - 225
173	✉	<b>1913, 5¢ dark green</b> , with due 1¢ tied by blurred EARLVILLE NY cancels with Washington-Franklin 3¢ tied by EARLVILLE NY JUN 20 1918 duplex on legal envelope bearing pencil Due 6¢, to Eaton NY . . . . . (JQ3)	ECV \$125 - 150
174	✉	<b>Used from Italy: 1913, 10¢ dark green (SE)</b> tied by CERNOBBIO 6-3-14 c.d.s. on Grand Hotel Lac de Como envelope bearing black "T". violet "T O,50" in circle HUDSON TERMINAL NY Mar 18, 1914/ DUE 10 cents on front, an interesting manuscript on reverse "American Express Company Paris, France" on partially torn back flap where the envelope probably picked up the due stamp. Most interesting . . . . . (JQ4)	ECV \$400 - 500
175	✉	<b>Field Post Letter: 1913, 10¢ dark green</b> , uncancelled on unfranked envelope bearing KWFELDPST EXPD D27 INFANT DIVISION 11 JAN 15 c.d.s, violet S.B. UI Regt, 19, crayon "T" and COLLECT POSTAGE 10 CENTS, to Los Angeles . . . . . (JQ4)	ECV \$300 - 350
176	★★	<b>Hunting Permit, 1934, \$1 Mallards</b> , PLATE NUMBER SINGLE, n.h., very fine . . . . . (RW1)	\$800
177	★✉	<b>Postal Savings, 1911, 10¢ orange, imprinted on deposit card</b> , very fine . . . . . (PS2)	\$225
178	★✉	<b>War Savings, 1919, \$5 deep blue</b> , one stamp mounted in a complete booklet, very fine . . . . . (WS4)	\$275
179	✉✉	<b>Christmas Seal, 1918, the experimental postal stationary window envelope with impression on reverse, only 100 presumably printed. Very few survived.</b> . . . . . (WX22E)	ECV \$500 - 600
180	✉	<b>Christmas Seal, Wisconsin, 1909, W.A.T.A. seal</b> , with Washington Franklin 1¢ tied by MILWAUKEE WIS DEC 23 1909 duplex on message side of Christmas post card to Bellville, Ill. Very, very rare. . . . .	ECV \$250 - 275
181	★/(★)	<b>Canal Zone, Postage Dues, 1914, 1¢-10¢ complete</b> , o.g. (except 10¢ unused without gum), fine . . . . . (J1-J3)	\$1,335
182	★	<b>Guam, 1899, 1¢-\$1, basic complete group of 14</b> , including Special Delivery and Guard Mail, o.g., some lightly hinged, fine to very fine . . . . . (1-8, 10-12, E1, M5, M)	\$2,255



170



171



172



173



174



175



177



180



178



179



176



Ex 181



Ex 182

**Collections and Various**

**19th and 20th Century**

- 183 ★ **A lovely collection of several hundred**, in two Lighthouse hingeless alblums, useful earlies but the highlights are the 25 pages of Washington- Franklins complete with n.h. stamps, well centerd copies, booklet panes and many serious coils; Values to \$1.00. Also all the bi-coloures, a few proofs, very fresh and superior. . . . . **ECV \$6,000 - 8,000**
  
- 184 ★○ **A lovely collection of only a couple of hundred stamps**, in National Alblum, only a few used, the strength is up to very early 1900's sets to \$1, quality throughout withh 22 Certificates, some graded. This is a very worthwhile collection to inspect.. . . . **ECV \$3,500 - 4,000**
  
- 185 ★○ **A most interesting remainder of what must have been a great old-time collection of used classics**, mounted on somewhat dampness affected album pages (stamps OK) PLUS over 40 counter book pages containing all sorts including multiples of Columbians, 1847 5¢ used sheet margin copy, C18's, very interesting and probably some very fine stamps. Really worth inspecting. . . . . **ECV \$2,000 - 3,000**
  
- 186 ★○✉ **A quite decent Scott album housing used stamps**, plus a smaller album, nice selection of better o.g. stamps on small pages, Revenues in glassines better stamps on black aproval card, Postage Due documents; small Duck stamp collection, a few strange covers. Quite a mish-mosh but well worth inspecting.. . . . **ECV \$1,500 - 3,000**
  
- 187 **An absolute hodge-podge**, of photographic, patriotic labels, pre-cancels, FDC, some better covers, Americana, advertising cards, prints, Life magazines, even some stamps. Have fun with this. All in 2 boxes. . . . . **ECV \$2,000 - 3,000**
  
- 188 ★○ **FIVE sporadically filled 3 ring albums**, some 19th Century, occassional better items such as the 2 o.g. Pan-Pacific sets, C18, some back of the book. Useful album.. . . . **ECV \$400 - 500**



**Ex 189**

- 189 ★★/★ **Hunting Permits, 1934-75**, l.h. to o.g. through 1941, probably n.h. thereafter, all neatly mounted on Scott hingeless pages. Nice set . . . . . (RW1-RW42) **\$5,000**

**World War I Mail From One Soldier in Aero Squadrons**



**Ex 190**

- 190 ☒ **A fabulous collection of about 200 covers**, plus incredible content ranging from training fields around the U.S. to stations in Europe of the American Expeditionary Forces. There is documented information, biographical excerpts. Frankings are generally stampless, some foreign and many Washington-Franklin within the U.S. and to abroad. Much information, but room to organize and write up to make a most facinating exhibition collection. Allow time to view. All housed in two ablums. **ECV \$7,500 - 10,000**

**Other Postal History**

- 191 ☒ **194 covers**, ranging from 1851, 1861's, Trans- Mississippi, early F.D.C., flights, picture post cards, advertising covers, almost something for everyone. Worth a good look..... **ECV \$750 - 1,000**
- 192 ☒ **Thousands and thousands of covers and postal cards**, somewhat sorted in 28 small file boxes including Bureaus, Washington Franklins, FAM's and CAMS's, Presidentials, back-of-the-book, FDC, etc, a great deal before WWII, many low value but many interesting. .... **ECV \$500 - 1,000**

**COVER CONDITIONS**

**Minor faults including, but not limited to, file folds not affecting stamps, small tears and some backflap damage have not been noted in the descriptions of the catalogue, and are not grounds for the return of a lot.**

# Forgeries

## United States

### Postmasters' Provisionals

The following section of postmasters' provisionals were produced by Henry K. Jarrett, unless otherwise stated. They are all from his personal collection.

#### Alexandria, Va.

- 193 F☒ **Alexandria, Va., 1846, 5¢ black on buff, type I**, just tied by "5" on folded letter sheet bearing Alexandria c.d.s. and red PAID and boxed 5. Two known examples of this 5¢ . . . . . (1X1 var.) ECV \$500 - 600

#### Baltimore, Md.

- 194 FP **Baltimore, Md., 1845, 10¢ black on white, die proof**, die sunk on wove paper; with wrinkle, very fine, Not Jarrett . . . . . (3X2 var.) ECV \$250 - 300
- 195 FP **Baltimore, Md., 1845, 5¢ black and 10¢ black, se-tenant die proof**, pair die sunk on wove paper; very faint off-set on reverse, very fine, Not Jarrett . . . . . (3X1-3X2 var.) ECV \$300 - 400
- 196 FP **Baltimore, Md., 1845, 5¢ black and 10¢ black, se-tenant die proof**, printed on reverse of antiqued document, same definition as former but older in appearance, not Jarrett, almost very fine . . . . . (3X1-3X2 var.) ECV \$200 - 300

#### Boscawen, N.H.

- 197 F **Boscawen, N.H., 1846, 5¢ dull blue on off white**, "unused", *eight copies known* . . . . . (4X1 var.) ECV \$150 - 175

#### Brattleboro, Vt.

- 198 F **Brattleboro, Vt., 1846, 5¢ black on buff**, Position 9, red PAID cancel, excellent example . . (5X1 var.) ECV \$150 - 200
- 199 F **Brattleboro, Vt., 1846, 5¢ black on buff**, VERTICAL PAIR, Positions 9 & 12, stitch watermark, red PAID cancels, exceptional . . . . . (5X1 var.) ECV \$400 - 500
- 200 F☒ **Brattleboro, Vt., 1846, 5¢ black on buff**, red PAID cancel on folded advertising sheet bearing BRATTLEBORO OCT 1 "c.d.s." and additional PAID. Very attractive . . . . . (5X1 var.) ECV \$500 - 600
- 201 F☒ **Brattleboro, Vt., 1846, 5¢ black on buff**, Brattleboro Stamp Club reproduction "cover", attractive . . . . . (5X1 var.) ECV \$100 - 125

#### Lockport, N.Y.

- 202 F **Lockport, N.Y., 1846, 5¢ red on dark orange buff**, wonderful antique look and accurate, very fine, *only four known* . . . . . (6X1 var.) ECV \$100 - 150

#### Ludlow, N.Y.

- 203 F **Ludlow, N.Y., 1846, 5¢ light blue on off white paper**, "initialled", very fine, *four copies known off cover* . . . . . ECV \$150 - 200
- 204 F☒ **Ludlow, N.Y., 1846, 5¢ light blue on off white paper**, "initialled" on envelope bearing LUDLOW c.d.s., PAID and 5, very attractive, *TWO known covers* . . . . . ECV \$300 - 350





193



200



194



195



196



199



197



198



202



203



201



204

**Millbury, Mass.**

- 205 F田 **Millbury, Mass., 1846, 5¢ black on bluish**, BLOCK OF 4, types I-IV, “unused”, superb, *only two blocks known* ..... (7X1 var.) ECV \$600 - 800
- 206 F **Millbury, Mass., 1846, 5¢ black on bluish**, type I, “unused” ..... (7X1 var.) ECV \$200 - 250
- 207 F **Millbury, Mass., 1846, 5¢ black on bluish**, type II, red PAID cancel ..... (7X1 var.) ECV \$200 - 250

**New York, N.Y.**

- 208 FP **New York, N.Y., 1845, 5¢ black on bluish, Sperati**, die proof, die sunk on glazed card, no initials, signed in pencil by Sperati on front, no backstamp, extremely fine ..... (9X1 var.) ECV \$250 - 300
- 209 FP **New York, N.Y., 1845, 5¢ black on bluish, Sperati**, initialed ACM in red, die proof on India showing top line of die sinking at top, signed in pencil by Sperati on front no backstamp. Far rarer initialed, very fine ..... (9X1 var.) ECV \$300 - 350
- 210 F **New York, N.Y., 1845, 5¢ black on bluish, Sperati**, initialed ACM in red, “unused & gummed”, signed in pencil by Sperati on reverse, extremely fine ..... (9X1 var.) ECV \$250 - 300
- 211 F **New York, N.Y., 1845, 5¢ black on bluish, Sperati**, initialed ACM in red, PAID cancel, signed in pencil by Sperati on reverse, very fine ..... (9X1 var.) ECV \$200 - 250

**Providence, R.I.**

- 212 FP **Providence, R.I., 1846, 5¢ gray black, Sperati**, die proof, die sunk on wove paper, signed in pencil by Sperati on front, no back stamp, very fine ..... (10X1 var.) ECV \$150 - 200
- 213 F **Providence, R.I., 1846, 5¢ gray black, Sperati**, sheet margins copy, “unused”, signed in pencil by Sperati on reverse, extremely fine ..... (10X1 var.) ECV \$150 - 200
- 214 F田 **Providence, R.I., 1846, 5¢ gray black on almost translucent paper, SHEET MARGIN BLOCK OF 4**, not Jarrett ..... (10X1 var.) ECV \$125 - 150
- 215 F **Providence, R.I., 1846, 10¢ gray black, SHEET MARGIN PAIR**, made in 1865 by Charles A. Peabody for George Hussey, “never hinged” ..... (10X2 var.) ECV \$150 - 200
- 216 F田 **Providence, R.I., 1846, 5¢ gray black, BLOCK OF 12**, stone 1, made in 1865 by Charles A. Peabody for George Hussey, “unused”; one vertical wrinkle ..... (10X1 var.) ECV \$350 - 400



- 217 F田 **Providence, R.I., 1846, 5¢ gray black, BLOCK OF 35**, Hussey stone 2, “unused”, outstanding; a couple of wrinkle / creases, one cut in, *the largest block known* ..... (10X1 var.) ECV \$750 - 1,000



205



206



207



208



210



209



211



212



213



215



214



216



- 218 F☒ **Providence, R.I., 1846, 5¢ gray black**, genuine stamp, margins all around, tied by red 5 in circle and manuscript cancel on 1846 folded letter sheet bearing red PROVIDENCE FEB 27 (6 month before issuance of stamp) Very, very impressive and artful . . . . . (10X1 var.) ECV \$600 - 800

*Brief history: Very early auction in Berlin. J.M. Bartels auctioned 1921 - withdrawn. H.R. Harmer auction 1957 - withdrawn. All along a forgery. Well travelled. More complete history accompanies.*

**St. Louis, Mo.**

- 219 F☒ **St. Louis, Mo., 1845, 5¢ black**, newish impression “tied” by St. Louis c.d.s. on envelope bearing red PAID. Not Jarrett . . . . . (11X1 var.) ECV \$100 - 125

**Tuscumbia, Ala.**

- 220 F **Confederacy, Tuscumbia, Ala., 1861, 3¢ dull red on buff**, CUT SQUARE, “unused”, very attractive example . . . . . (6AXU1) ECV \$150 - 200

**Regular Issues**

- 221 F☒ **1857, 3¢ dull red, bisect**, “tied” by segmented cork cancel on envelope bearing PENDLETON HILL CONN c.d.s. to Rhode Island . . . . . (26 var.) ECV \$75 - 100
- 222 F☒ **1857, 12¢ black, quadrisect**, “tied” by star on envelope bearing indistinct Dec c.d.s. to Illinois (36 var.) ECV \$100 - 120
- 223 F **1870, 30¢ black and 90¢ carmine, forged I. grills**, to duplicate unique stamps . . . . (143A, 144A vars.) ECV \$100 - 125
- 224 F **1870, 15¢ orange, forged H. grill**, o.g., fine; with differing certificates . . . . . (141 var.) ECV \$100 - 125
- 225 F **1893, Columbians, crude examples overprinted “imitation”**, set to \$5 less the 2¢ plus extra 8¢, 30¢, 50¢, \$1, \$2 and \$4. We believe made in Germany . . . . . (230//245 vars.) ECV \$100 - 125

**Airmail**

- 226 FP **Airmail, 1930, \$2.60 Graf Zeppelin**, Panetti die proof, very fine . . . . . (C15 var.) ECV \$300 - 400
- 227 FP **Airmail, 1930, \$2.60 Graf Zeppelin**, Panetti, “unused” with gum, very fine . . . . . (C15 var.) ECV \$300 - 400
- 228 F **Airmail, 1930, Roessler “Graf Zeppelin”**, on Washington Franklin 1¢ green, unused, rare and historical. Roessler unfortunately used these on some covers and the postal authorities deemed them forged stamps. He was sent to jail . . . . . (C15 var.) ECV \$125 - 150



219



221



220



Ex 223



222



226



224



Ex 225



227



228

**Express Companies**

- 229 F☒ **Rhodes and Whitney Express, Weaverville**, in blue on a genuine Wells Fargo and Company used envelope..... ECV \$100 - 125
- 230 F☒ **Express Companies, three somewhat damaged covers**, Grays, Rhodes & Whitney in blue. Black & Company in blue-black all on Wells Fargo and Company envelopes, the latter with interesting 1960 letter to the Philatelic Foundation concerning its genuineness, Barkhausen, Lichtenstein heritage. .... ECV \$100 - 150
- 231 F☒ **Black & Co's Express, Paid 5**, in black on genuine Wells Fargo and Company envelope, an off again, on again, marking having been present in many major collections, fine to very fine. .... ECV \$100 - 125
- 232 F☒ **Gray's Express, Paid**, in blue. .... ECV \$150 - 200

**Miscellaneous**

- 233 F **Hawaii, 1853, 13¢ dark red, thick white paper**, unused, excellent example, very fine ..... (6) ECV \$75 - 100
- 234 F **Hawaii, 1864, Numeral, 2¢ black**, purportedly used after 1909, the "stamp" carries numerous appropriate "illegal" invalid hand stamps plus other great "markings". A real conversation piece .. (20 var.) ECV \$150 - 200
- 235 F **Group of 18 stamps and 3 cute facsimile covers**, including 9 Neb. overprints, 5 made up bi-colors, 3 fancy cancels and a crude \$4 Columbian. .... ECV \$225 - 275

**British, Foreign and Asia**

- 236 F **Belgium, Parcel Post and Railroad Stamps, overprint forgeries** ..... (Q49, Q53, Q54, Q57 vars.) ECV \$75 - 100
- 237 F **British Columbia & Vancouver Island, 1860, 2½d dull rose, trimmed perforated stamp**, unused, cleaned, very nicely done, very fine appearance ..... (1 var.) ECV \$200 - 300
- 238 F **Newfoundland, 1857, 4d scarlet vermilion, Sperati**, "used", good to large margins all around, no backstamp, and unsigned, very fine ..... (4 var.) ECV \$250 - 300
- 239 F **Newfoundland, 1857, 1s scarlet vermilion, Sperati**, "used", good to very large margins all round, backstamp, extremely fine ..... (9 var.) ECV \$250 - 300
- 240 F **Newfoundland, 1857, 1s scarlet vermilion, Sperati**, "used", good to large margins all around, deep shade, backstamped, very fine ..... (9 var.) ECV \$250 - 300

**Covers**

- 241 F☒ **New Brunswick, 1860, 10¢ vermilion, diagonal bisect**, "tied" by grid on genuine cover to Sydney . . . . . (9 var.) ECV \$150 - 200



233



Ex 236



237



238



239



240



229



230



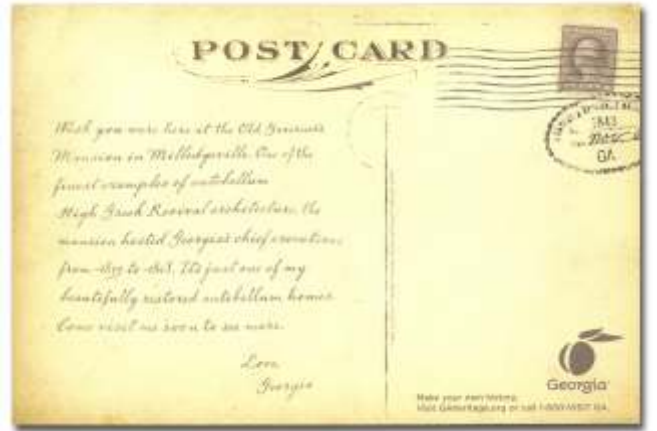
231



232



234



Ex 235



241

## Newfoundland

- 242 F☒ **1861, 4d rose, vertical bisect**, “tied” by grid on genuine cover bearing SUMMERSIDE PAID P.E.I. receiver on reverse . . . . . (18 var.) ECV \$300 - 350
- 243 F☒ **1861, 6d rose, vertical bisect**, “tied” by CREPUSFORD JY 12 1863 c.d.s. on doubtful cover bearing 3¢ in circle and “More to Pay”. Interesting. . . . . (20 var.) ECV \$300 - 350
- 244 F☒ **1861, 1s rose, vertical bisect**, “tied” by grid on partially genuine cover bearing ST Johns Newfoundland Aug 6 1863 c.d.s. red London PAID receiver and Liverpool transit on reverse . . (23 var.) ECV \$300 - 350
- 245 F☒ **1870, 2¢ green, diagonal bisect**, just “tied” on stained and damaged cover bearing red PAID to a lieutenant at a barracks . . . . . (24 var.) ECV \$75 - 100
- 246 F☒ **1875, 10¢ black, diagonal bisect**, “tied” together with 5¢ roulette and later 3¢ (40, 49) to genuine folded letter sheet bearing “6” and 2 1880 French markings. Very interesting and attractive . . . (27 var.) ECV \$300 - 350
- 247 F☒ **1870, 12¢ pale red brown, diagonal bisect**, “tied” by grid on cover bearing black PAID in oval to Ohio . . . . . (28 var.) ECV \$150 - 200
- 248 F☒ **1870, 12¢ pale red brown, diagonal bisect**, tied by a grid on novel cover bearing ST JOHN’S NFLD SE 16 1876 c.d.s. and 4 Jamaica transit and receivers including a lovely SPANISH TOWN. Very creative . . . . . (28 var.) ECV \$200 - 225
- 249 F☒ **1865, 24¢ blue, thin translucent yellowish paper, diagonal bisect**, “tied” together with 1¢ (41) by grids on genuine cover bearing red St Johns Nfld MR 1 80 PAID c.d.s. large “2” crossed out and manuscript. Very attractive creation . . . . . (31 var.) ECV \$300 - 350

## Nova Scotia

- 250 F☒ **1851, 3d bright blue, diagonal bisect**, together with 5¢ perforated (10) “tied” by grids on doubtful cover bearing Halifax N.S. Aug 15th 63 c.d.s. red Paid and NY receivers on reverse. A nice attempt at a combination cover . . . . . (2 var.) ECV \$350 - 400
- 251 F☒ **1851, 6d yellow green, diagonal bisect**, “tied” by grid on doubtful cover bearing ORWELL P.E.I. PAID c.d.s. receiver. . . . . (4 var.) ECV \$300 - 350



242



243





244



245



246



247



248



249



250



251

- 252 F☒ **1857, 6d dark green, quadrisect, “tied”** by grid on large doubtful cover bearing Wood Island PEI APR 60 and large red “6” and manuscript “to pay”. Very creative. . . . . (5 var.) ECV \$400 - 450
- 253 F☒ **1860-63, 1¢ black on yellowish, diagonal bisect, “tied”** by grid on a doubtful cover bearing red PAID in oval to Halifax . . . . . (8 var.) ECV \$150 - 200
- 254 F☒ **1860-63, 2¢ lilac, diagonal bisect, “tied”** together with single by segmented cork on folded letter sheet bearing Halifax Fe 14 NS c.d.s. Very attractive . . . . . (9 var.) ECV \$200 - 250
- 255 F☒ **1860-63, 8½¢ green on yellowish, diagonal bisect, “tied”** together with single on original cover bearing doubtful Halifax and London 1864 c.d.s. strikes, to Spain . . . . . (11 var.) ECV \$200 - 250
- 256 F☒ **1860-63, 10¢ vermilion, vertical bisect, “tied”** together with 8½¢ by grid on partially genuine cover bearing Halifax c.d.s., London transit and red French transit/receiver . . . . . (12 var., 11) ECV \$200 - 250

Prince Edward Island

- 257 F☒ **1861, 2d dull rose, diagonal bisect, “tied”** together with 3d by grids on doubtful envelope bearing U.S. 3 Due marking and New York receiver . . . . . (1 var., 6) ECV \$200 - 250
- 258 F☒ **1861, 3d blue, diagonal bisect, “tied”** by grid on doubtful envelope bearing red PAID and St Eleanor Oct 8, 1863 receiver on reverse . . . . . (2 var.) ECV \$200 - 250
- 259 F☒ **1861, 6d yellow green, diagonal bisect, “tied”** by grid on doubtful cover bearing large crayon P.E.I. on reverse and Summerside PAID receiver on front . . . . . (3 var.) ECV \$150 - 200
- 260 F☒ **1862-68, 2d rose, diagonal bisect, “tied”** together with 2d by grids on envelope bearing Dead Letter Office APR 6 1867 in triangle on reverse . . . . . (5 var.) ECV \$200 - 250
- 261 F☒ **1862-68, 3d blue, diagonal bisect, “tied”** by grid on rough cover bearing inappropriate “6” CTS “10” and Halifax c.d.s. on reverse. . . . . (6 var.) ECV \$100 - 150
- 262 F☒ **1862-68, 6d yellow green on yellowish, diagonal bisect, “tied”** together with 4d grids on partially original rough cover bearing red Londonderry N.S. c.d.s., P.E.I. in circle, London transit, Rotterdam receiver . . . . . (7 var., 9) ECV \$150 - 200



252



253



254



255



256



258



259



260



261



262

- 263 F☒ **1862-68, 9d violet on yellowish, diagonal bisect, “tied” by grid on doubtful cover bearing ORWELL P.E.I. PAID and Montego Bay Jamaica SP 10 67** ..... (8 var.) ECV \$150 - 200
- 264 F☒ **1868, 4d black, diagonal bisect, “tied” by grid on doubtful fragile cover bearing interesting “Not Called For” and Halifax transit on reverse** ..... (9 var.) ECV \$150 - 200
- 265 F☒ **1872, 2¢ ultramarine, diagonal bisect, “tied” together with 2¢ by grids on doubtful cover bearing P.E.I. MY 18 1872 c.d.s. on reverse and red London receiver on front. Very attractive** ..... (12 var.) ECV \$250 - 300
- 266 F☒ **Cape of Good Hope, 1858 “Triangular”, Perkins Bacon printing, 1s bright yellow green, genuine stamp fraudulently added to a quite possibly genuine cover, Ex Dale Lichtenstein** ..... (6) ECV \$100 - 150

China

- 267 F **1878-85, Large Dragons and Small Dragons complete, “used”, not bad examples** . (1-3, 10-12 vars.) ECV \$75 - 100
- 268 F☒ **1903, Foochow Provisional, 1¢ on half of 2¢ scarlet, type A, both on excellent cover and on piece** ..... (123) ECV \$150 - 200
- 269 F **1912, Foochow “Provisional Neutrality” Overprint, \$1 red & pale rose, used, fine** ..... (135) ECV \$100 - 125
- 270 F **1912, Nanking “Provisional Neutrality” Overprint, 16¢ olive green, used, fine** ..... (141) ECV \$100 - 125
- 271 F **1912, Nanking “Provisional Neutrality” Overprint, 16¢ olive green, used, fine** ..... (141 var.) ECV \$100 - 125
- 272 F **1912, Nanking “Provisional Neutrality” Overprint, 50¢ yellow green, used, fine** ..... (142 var.) ECV \$100 - 125
- 273 O **1912, Nanking “Provisional Neutrality” Overprint, 50¢ yellow green, used, fine** ..... (142 var.) ECV \$100 - 125
- 274 F **1912, Nanking “Provisional Neutrality” Overprints, Group of 4, all “used”:** 7¢ two copies, \$1.00, ½¢ Postage Due ..... (140, 143 vars., etc.) ECV \$150 - 200

Egypt: Suez Canal Co.

- 275 F☒ **1868, 5c green, IRREGULAR MULTIPLE, used; faults, any multiples are rare** ..... (L2) ECV \$100 - 125
- 276 F **1868, 40c pink, VERTICAL PAIR, “used”; faults** ..... (L4) ECV \$100 - 125
- 277 F☒ **1868, 40c pink, IRREGULAR USED BLOCK OF 3; faults** ..... (L4) ECV \$150 - 200
- 278 F **1868, remainder group of 21, comprising 1¢ black, 1 used, 2 unused, 5¢ green, 4 used, 20¢ blue 5 used, 2 unused, 40¢ pink 5 used, 2 unused. If genuine the group would catalogue about \$11,000** (L1-L4 vars.) ECV \$200 - 300



263



264



265



266



268



Ex 267



269



270



271



272



273



274



275



Ex 278



276



277

279	F	<b>Germany, 1933, Nothilfe souvenir sheet, "used";</b> A. Schlegel finding ("Befund") 2013 . . . (B58 var.)	ECV \$125 - 150
280	F	<b>Germany: Berlin, 1949, Overprints, large number of 6pf, 8pf and 40pf with a few others, "used"</b> ..... (9N22, 9N23, 9N29 vars.)	ECV \$100 - 125
281	F	<b>Italian States: Sardinia, 1851, Victor Emmanuel II, 40c rose, sheet margin "used", fine</b> . . . . (3 var.)	ECV \$75 - 100
282	F	<b>Italy, Airmail Official, 1933, Balbo Trans-Atlantic Flight Tryptich, a decent reproduction with quite good colors and n.h. "gum".</b> Better than most . . . . . (CO1 var.)	ECV \$200 - 300

Peru

283	F	<b>1857, Pacific Steam Navigation Co., 2r green, probably a reprint or trial color, used, margins all around, nice detail, fine</b> . . . . . (2 var.)	ECV \$70 - 90
284	F	<b>1858, Coat of Arms, 1/2p rose red, used color error. An excellent example of the art., very fine;</b> Moorhouse Cert 2013 . . . . . (5 var.)	ECV \$200 - 250
285	F	<b>1873, Llamas, 2c dark ultramarine, used genuine stamp with fraudulent cancellation</b> . . . . . (20 var.)	ECV \$100 - 125
286	F	<b>Russian Sphere, A small stock book containing many hundreds, mostly in blocks of overprints and surcharges of Army of the North, Wrangel, Siberia, South Russia, Serbia, some inverts, obviously a great deal n.h, maybe some genuine.</b> . . . . .	ECV \$300 - 500
287	F	<b>Worldwide, A collection of a few hundred stamps and five covers, U.S. includes substantial coils, locals, expresses. Foreign, everything from the usual French Colonies to £5 Transvaals to Martinside, Bermuda 12/6 used, Swiss Colonies, New Brunswick 3p, reprint French essays, Luxemburg blocks, Iran, St. Christopher. Some very good, some not so. Great fun.</b> . . . . .	ECV \$600 - 850
288	F	<b>Worldwide, Card file book containing a couple of hundred examples of forged stamps and cancels, plus a fair number of genuine, some informative notations, well organized.</b> . . . . .	ECV \$250 - 300



279



Ex 280



282



281



283



284



285

# British Commonwealth

## Australian States

289	★	<b>Tasmania, 1855, “Van Dieman’s Land”, 4d blue, imperf, Large Star watermark, unused, fresh colour and paper, margin portions at top left and right. SG 18; £3,250. . . . . (6a)</b>	\$3,250
290	★	<b>Tasmania, 1857, “Van Dieman’s Land”, 2d yellow green, imperf, PAIR, Double-lined Numeral watermark inverted watermark, full o.g., margins all around except slightly in at left; few gum creases or bends as normal and stain at top right, <i>rare multiple</i>. SG 32; £1,400. . . . . (12a)</b>	\$1,500
291	★	<b>Tasmania, 1857, “Van Dieman’s Land”, 4d blue, imperf, STRIP OF 3, Double-lined Numeral watermark, part o.g., margins all around except for small nick and just in right top, fine to very fine, <i>a very scarce multiple</i>. SG 37; £900. . . . . (13a)</b>	\$870
292	★	<b>Tasmania, 1865, Queen Victoria “Chalon Head”, 1s vermilion, perf 12, actually perfs measure 11.7-11.8, unused (but perhaps a few traces of o.g.), fine for the issue. SG 77; £300. . . . . (34)</b>	\$325
293	★	<b>Tasmania, 1864, Queen Victoria “Chalon Head”, 1s vermilion, perf 12½, unused, fine. SG 90; £500. . . . . (34c)</b>	\$600
294	★	<b>Australia, Postage Dues, 1902, ½d-8d values, o.g., some lightly hinged, very fine. SG D1/7. . . (J1-J7)</b>	\$388
295	★	<b>Australia, Postage Dues, 1909-10, ½d-10s values, fine to very fine. SG D63/72. . . . . (J39-J48)</b>	\$954
296	★	<b>Australia, Officials, 1931, 2d-3d Kingsford Smith complete, overprinted “O.S.”, o.g., lightly hinged, extremely fine . . . . . (O1-O2)</b>	\$610
297	★	<b>British Guiana, 1882, Seal of the Colony, 1¢-8¢ complete and 1898, Victoria Jubilee, 1¢-15¢ complete, o.g. to part o.g., fine to very fine . . . . . (107-111, 152-156)</b>	\$440



289



290



291



292



293



Ex 294



Ex 295



Ex 296



Ex 297

## Canada



- 298 ★ **Maritime Provinces: Nova Scotia, 1853, 1d red brown**, unused, large margins all around, bright colour and blued paper, an exceptional copy; light diagonal crease (not mentioned in certificate), Ex Argenti; R.P.S. Cert (1954) . . . . . (1) \$3,500

## Regular Issues

- 299 ○ **1852, Beaver, 3d orange red, thin paper**, light target cancels, good to very large margins, extremely fine; V. Green Cert (2004) . . . . . (4d) \$450
- 300 ★★/★田 **1882, Small Queen, ½¢ black**, SHEET OF 100, 66 copies n.h., 15 o.g., 19 disturbed o.g.; bottom, right block of eight separated, some other separations, fragile, generally fine . . . . . (34) \$2,420
- 301 ★ **1893, Queen Victoria “Widow’s Weeds”, 20¢ vermilion and 50¢ deep blue**, o.g., fine to very fine . . . . . (46, 47) \$850
- 302 ★★ **1908, 20¢ Quebec**, n.h., very fine . . . . . (103) \$625
- 303 ★★ **1929, \$1 Parliament**, n.h., almost very fine . . . . . (159) \$600



- 304 ★ **Registry, 1888, 2¢ rose carmine**, IMPRINT STRIP OF 3, o.g., some selvage reinforcement, quite well centred for such a multiple, minor oxidation which could be improved. A magnificent show piece for this last printing of the issue . . . . . (F1b) \$1,020
- 305 ★ **Cyprus, 1881, “CYPRUS” and ½d on Great Britain 1d red, surcharge double**, plate 215, fine. SG 9ab; £450. . . . . (10c) \$550
- 306 ○ **Egypt, 1926, 50p Port Fuad**, neat cancels, very fine . . . . . (124) \$875





299



301



302



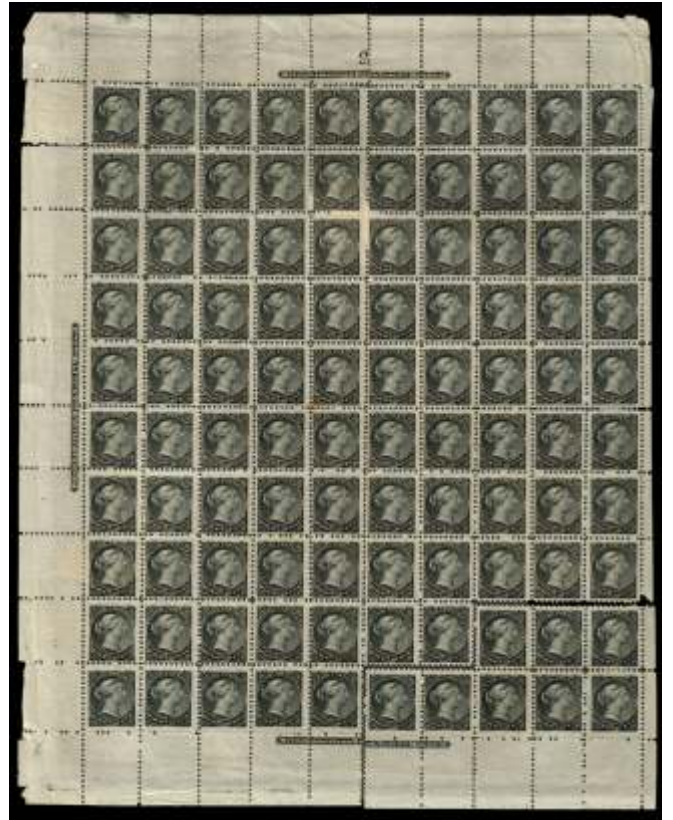
305



303



306



300

Falkland Islands



307



308



309

- |     |   |   |         |
|-----|---|---|---------|
| 307 | ★ | 1928, South Georgia Provisional, 2½d on 2d purple brown, o.g., initials on reverse, fine. SG 115; £1,300. .... (52)       | \$1,200 |
| 308 | ▲ | 1928, South Georgia Provisional, 2½d on 2d purple brown, tied on piece by partial c.d.s., fine. SG 115; £1,300. .... (52) | \$1,300 |
| 309 | ▲ | 1933, Centenary, £1 black & carmine, tied by light PORT STANLEY _ FE 1933 on piece, very fine. SG 138; £3,000. .... (76)  | \$2,900 |

- 310 ☒ **Great Britain, Used to Brunswick, BNA: 1840 folded letter**, date lined May 4, leaving BEDFORD MAY 5, red London Ship Letter MAY 6 and New York transit. Cross Border. The last day before the 1d Black. . . . . ECV \$100 - 125
- 311 ○ **Great Britain, 1884, Queen Victoria, 10s ultramarine**, Anchor watermark, neat cancel, very fine. SG 183; £525. . . . . (109) \$500
- 312 ○ **Mauritius, 1859, Dardenne issue, 1d dull vermilion**, neat grid cancel, good margins all around, incredible laid lines, very fine; Foundation Cert (2012) SG 42; £1,300. . . . . (16) \$1,200
- 313 ★ **New Guinea, Airmail, 1939 Bulolo Goldfields, 10s pink, o.g., lightly hinged, very fine**. SG 224; £500. . . . . (C58) \$525

### South Africa



- 314 ○ **Bechuanaland, 1888, Queen Victoria, £5 lilac & black**, neat "255" in grid cancel, fresh colour, very fine. SG 21; £1,700. . . . . (22) \$1,900
- 315 ☒ **Bechuanaland, 1900, Cape of Good Hope 1d postal card, overprinted for use in British Bechuanaland**, cancelled Mochuudi (a small village in Bechuanaland) bearing Kimberley C.G.H. transit other transits to Bruxelles receiver 14 Sept 00), thence readdressed to N.Y.C. A very rare usage of this overprint post card to a great destination, finally. . . . . ECV \$200 - 250

### Cape of Good Hope

- 316 ★ **Mafeking, 1900, Sgt. Major Goodyear, 1d pale blue on blue**, part o.g., very fine. SG 17; £1,100. . . . . (178) \$1,100
- 317 ○田 **Vryburg, 1899, Z.A.R. overprint, ½d on ½d green**, BLOCK OF 4, neat VRYBURG 28 NOV 99 cancels; natural creases, fine to very fine, *rare multiple*; B.P.A. Cert (1988) SG 1; £320. . . . . (N1) \$380
- 318 ☒ **Vryburg, 1899, Z.A.R. overprints, ½d-2½d complete**, tied by VRYBURG NO 25 99 c.d.s. cover strikes (2nd day of issue) on envelope bearing Johannesburg receiver on reverse. Very rare. SG 1/4; £3,205 on cover. . . . . (N1-N4) \$1,315 off cover
- 319 ☒ **1900, P.O.W. Camp, C.G.H. 1d (2), ½d tied by 12 APR Capetown c.d.s. on small 1900 POW marked envelope commencing on a trip - Durban (Natal) - Lorenzo-Marques through Delagoa Bay - Pretoria to Joburg (Transvaal) 4/25 a wonderful trip through South Africa**. . . . . ECV \$150 - 200
- 320 ☒ **Group of ten covers**, starting with 1850 CAPETOWN CROWN OVAL, 1873 1d rose, various other frankings and cards in the 1890's and three from 1901-1905, three to the U.K., one to Hamburg all with retail descriptions and prices. . . . . ECV \$125 - 175
- 321 ○ **Natal, 1857, Embossed, 3d rose**, blue 29 SE c.d.s., good margins all around, incredibly defined embossing 32x36mm, extremely fine. SG 4; £400. . . . . (1) \$550



310



311



312



318



315



313



316



319



317



321



320

## Orange River Colony

- 322 ☒ **1900, ½d green on ½d V.R.I. postal card**, tied by by BLOEMFONTEIN O.R.C. AP 18 01 c.d.s. Springfontein Station to England. Nice chit chat about train to Pretoria 4½ days, blown up bridges, a disaster, etc. SG 133. . . . . (54) ECV \$100 - 125
- 323 ☒ **1902, “V.R.I.”, 1s on 5s green, short flag**, with 2½d (2) on registry 2d stationery all tied by KROONSTAD 3NO 02 O.R.C. c.d.s. strikes to Vienna. A rare error on such an interesting cover. SG 138; £850. . . . . (60) ECV \$300 - 400
- 324 ★ **1900, “V.R.I.”, 2½d on 3d ultramarine (level stops) and 6d on 6d bright carmine (raised stops)**, 5 copies of former, 3 of latter all tied by BLOEMFONTEIN AP 28 c.d.s. strikes on legal size envelope to “South Africa”. SG 104, 119. . . . . (47, 50c) ECV \$150 - 200
- 325 ★ **1901, Boer War covers**, censored covers/card all bearing 1p violet surcharges, three to England (1 picture post card), a cover from Kroonstad to POW Camp at Ladysmith, Natal (martial law sealing tape on reverse), plus two fronts to Diyatalawa Camp, Ceylon. Six in total, quality varies. . . . . ECV \$150 - 200

## Transvaal

- 326 ☒ **1900, Boer War**, “On Active Service South Africa 1900” and “From Capt E \_\_ Fields 1st Vic. Regt.” on envelope (a bit tatty) addressed home to Sydney Australia, received December 1 Sydney, with defaced Due, readdressed two times ending up in Melbourne. A rough trip from a rough place. Obviously an Australian contingent. Well travelled. . . . . ECV \$100 - 125
- 327 ☒ **Boer War: Canadian Contingent: Unfranked “no stamps” envelope**, bearing FIELDPOST BRITISH ARMY 28 JAN 00 c.d.s. from Belmont S.A. to Ohio U.S., London and NY transits. The soldier was an American, enlisted in Canada. Long letter discussing battles, camp conditions and being wounded. . . . . ECV \$150 - 200
- 328 ★ **Interesting group of (12) covers and one front**, most to U.K., front to Boston (patriotic with interesting manuscript.) G.B. Martial Law Bloemfontein to Joburg P.B.C. Joburg oval to the Hague, ½d post card with Contonment Potchifstrom c.d.s., blue Klerksdoys also another black of same and 1p regis perfectly centered with three additional frankings to Prague, a Burgher Camp, 1902 etc. Nice cross section of the transition period. . . . . ECV \$300 - 350



322



323



324



Ex 325



326



327



Ex 328

- 329 ☒ **1902, Boer War**, 1d + 2d registered stationery wrapper (a bit tatty), bearing 2d stamp all tied by A.P.O. Pretoria AP 26 02 c.d.s. strikes, bearing violet boxed POSTED OUT OF COURSE I.S. various G.B. registered markings and red 17 May London receiver on front and back readdressed to Weymouth. A well documented cover. . . . . ECV \$200 - 250
- 330 ☒ **-1904, Arms & Edward VII issues**, collection comprising 15 covers / cards used 1898 to 1904, local or England usage, except one to the United States, also mint blocks of four (S.G. 205 to 212A) and some nice other stamps. Worth inspection. . . . . ECV \$300 - 400
- 331 ★○ **A small collection of 143 mostly V.R.I. and E.R.I. and non-overprints**, on different remainder album and stock pages very random but many identified issues to Edward, needs to be organized to be useful. . . . . ECV \$100 - 125
- 332 ☒ **1902, Boer War**, Ceylon to Netherland Indies: 2 (2) and 5 (2) tied on 2 registered post card with hand drawn anti-Kitchner propaganda cartoon on message side damning the Aug 1 1901 proclamation of banishment for armed Boer leaders. A very rare combination of rate and politics, very colorful. Additional Ceylon Camp card missing a stamp. . . . . ECV \$500 - 750
- 333 ★ **Trinidad, Postage Dues, 1885 and 1906-07 issues complete**, o.g., lightly hinged, fine to very fine. SG D1/17; 470. . . . . (J1-J17) \$529
- 334 ☒ **Zanzibar, 1895-96, a-5r black overprints on India**, set of 14 different values, all the black overprints except 1r grey, tied by ZANZIBAR 31 MY 97 c.d.s. strikes on registered envelope bearing G.B. receiver on reverse. Impressive cover, fine to very fine; Sorani Cert (2001) SG 3//21. . . . . (3//17) ECV \$400 - 500

**EXTENSIONS AND EXPERTIZING**

Any lots place on extension for expertizing **MUST** be submitted by Harmers International, Inc. Submission by the purchaser will nullify any extension request. Therefore, upon notification of purchase, please contact us by mail, telephone, fax or e-mail with the lot numbers you wish to submit and the desired expertizer .

**COVER CONDITIONS**

**Minor faults including, but not limited to, file folds not affecting stamps, small tears and some backflap damage have not been noted in the descriptions of the catalogue, and are not grounds for the return of a lot.**



329



330



Ex 334



332



Ex 333

## General Foreign



- 335 ○ **Cameroun, 1913, Kaiser's Yacht (watermarked), 5m slate & carmine**, socked-on -the-nose DUALA 30.17.13 KAMERUN c.d.s., fresh and well centred; a couple of nibbed perforations, still very fine, *very rare used*; signed Senf and with his sales card. Michel 25 1a; 4,800. . . . . (25) \$4,250



Ex 336



337

- 336 ○ **Denmark, 1918, 27re surcharges on 1re-10kr Newspaper stamps, both sets complete**, used, fine to very fine . . . . . (138-154) \$1,350
- 337 ○ **Dominican Republic, 1865, Coat of Arms, r black on pale green, laid paper**, Position 3, all dividing lines well clear, lightly cancelled in top left corner, a far superior copy to any in the Hennan Collection. Perhaps the finest single in existence, superb . . . . . (3) \$457
- 338 ★★田 **France, 1930, 1.50fr+3.50fr Caisse d'Amortissement, BLOCK OF 4, n.h., very fine** . . . . . (B34) \$520
- 339 ★★/★ **Germany, 1930, IPOSTA souvenir sheet**, stamps never hinged, very fine. Michel Block 1. . . . . (B33) \$1,200
- 340 ★ **Germany, 1935, OSTROPA souvenir sheet**, unused without gum; some penetration of watermark, still very fine. Michel Block 3; 1,100. . . . . (B68) \$825 as without gum
- 341 ○ **Germany, 1933, Nothilfe souvenir sheet**, cancelled Zittau 1b 29. 6. 34. 9-10 four strikes, the measurements are within tolerated limits. The block margin is slightly stained and the paper is in part discolored on the back. A very critical description. Nevertheless it seems almost very fine to our eyes; Schlegel Certificate (2013) and signed. Michel Block 2. . . . . (B58) \$9,750
- 342 ○ **Italian States: Naples, 1861, 1g black, head inverted**, light TORINO cancel, margins all around; a couple of small filled thins, still fine, *rare*, Ex Cunliffe; signed Diena, Foundation Certificate (2010) . . . . . (21a) \$2,175
- 343 ★ **Japan, 1916, 10s Heir Apparent**, o.g., hinge remnant; trace of gum stains and corner bend, fine . . . (154) \$800
- 344 ★★田 **Japan, 1935, 1s New Year's Greeting, MINIATURE SHEET OF 20, stamps n.h.; one gum disturbance, couple of margin wrinkles, still very fine** . . . . . (222a) \$700





338



340



341



342



343



339



344

- 345 ☒ **Korea, 1902, Handstamped Surcharge on Second Issue, 1ch on 25p maroon, TWO PAIRS, fair, cancelled by CHEMULPO COREA 29 JUL c.d.s. strikes on 1903 picture postcard bearing senders oval handstamp. A very rare usage to Copenhagen.; Holcombe Certificate (1986) . . . . . (35) ECV \$150 - 200**
- 346 ★ **Korea, 1903, Falcon Issue, 2re-2wn complete, o.g., hinge remnant, top three well centred with 1wn perforations barely touch; three low values with tiny thins, generally very fine . . . . . (39-51) \$1,575**
- 347 ★ **Panama, Airmail, 1936, 5c on c Arosemena, part o.g., very fine . . . . . (C19) \$400**
- 348 ☒ **Poland, 1860, Arms, 10k blue & rose, perfectly centered, very fine except for tear in top left corner, tied by 1 in 4 circle on neat blue folded letter sheet bearing blue M. BERSOHN WARSZAWA forwarder red transit, to St. Petersburg, very fresh, Ex Consul Weinberger, Ernst Stock handstamp . . . . . (1) \$1,000**
- 349 ★★/★ **Russia, Airmail, 1935, Chelyuskin Rescue complete, mostly never hinged; few wrinkles, one or two small corner creases, fine to very fine . . . . . (C58-C67) \$1,580**
- 350 ★ **Russia, Airmail, 1935, Chelyuskin Rescue complete, o.g., lightly hinged; few light wrinkles, very fine . . . . . (C58-C67) \$1,580**
- 351 ○ **Sweden, 1879, 20 vermilion, TRETIO error, light c.d.s.; rounded corner, fine. Facit 33v1. . . . . (33a) \$7,000**
- 352 ★ **Vatican, 1934, 40c-3.70L Provisional Surcharges complete, also #155a (o.g. - hinge remnants, fine to very fine); 3.05L faded, 3.7L light crease, Initialled AEK (Komatsoulis) . . . . . (35-40) \$1,818**



345



348



Ex 346



347



Ex 349



Ex 350



351



Ex 352

## Collections by Country

- 353 ★○ **British Guiana, 1860-1931, collection of over 200**, neatly mounted on quadrille pages, mostly used to George V, o.g. thereafter, sets Specimen perfins, surcharges, cancels some faults but better than normal. Worthwhile and popular. . . . . (20//241) \$5,000
- 354 ★○ **Canada, 19th and 20th century, thousands of mostly used stamps**, in three stockbooks and three albums, the vast majority very inexpensive with a few useful earlyies and mixed sets to sort out. . . . . ECV \$200 - 250
- 355 ★○ **Egypt, a quite surprising group**, mostly in one album with quite good earlyies and another with varieties, many from the Royal Collection. Also, another 4 albums and a fat stockbook with covers. Many useful and elusive stamps. Well worth inspection. . . . . ECV \$400 - 600

*For more Egypt, see also lot 406*

- 356 ★○☒ **France & Colonies, 19th and 20th century, thousands of stamps**, in approval cards and glassines covering some classics to the useful pre-World War II period. Sets, souvenir sheets, back-of-book. Also, a very nice group of covers. Not too much really recent. All contained in one large box, Ex Odon Sandor. . . . . ECV \$1,500 - 2,000

### German Area

*The following 14 lots comprise the largest physical offering of the German Area that the Harmer family has ever presented.*

- 357 ★○ **German States, collection**, primarily Bavaria (3 stock books plus album), Wrttemberg (1 stock book), German plus Prussian Officials multiples (1 stock book) plus 2 stock books of stationery, cut squares and locals. Staggering number (thousands) of Bavaria, few imperforates, but plenty of overprints and officials, also contains some mint. . . . . ECV \$500 - 750
- 358 ○ **Germany, 19th and 20th century to 1970's, a couple of thousand stamps**, in two albums, mostly used including some States but quite complete through the issues with duplicates on covers, virtually complete souvenir sheets with IPOSTA, OSTROPA (used, rough) Many better sets, back-of-the-book, Occupation Zones, etc. Well worth inspection for goodies, plus a stock book of duplicate souvenir sheets. . . . . ECV \$2,000 - 2,500
- 359 ★○ **Germany, thousands of mint and used stamps**, on approval cards and in glassines. Also hundreds of covers, postcards etc. plus selection of Nazi photographs and paraphenalia, covers, and finally a 1938 Olympics group of stamps, photos, covers and a book. Truly a far better assortment than normal. All contained in two boxes, Ex Odon Sandor. . . . . ECV \$2,000 - 4,000
- 360 ★○ **Germany, 1872-1922, two stock books through to Germania Issues**, thence a nice collection and study of DR Germania from 1920-1922, the Shields are quite good, hundreds of used Germania duplicates, some N.G.C., wonderful for stocking up on cancels usual varied condition. . . . . ECV \$750 - 1,000
- 361 ★○ **Germany, 19th and 20th century**, States, Colonies, WWII occupation, locals many hundred in one aibum and stock book, great variety, useful low values in the colonies. Worth inspection. . . . . ECV \$300 - 500
- 362 ★○ **Germany, primarily 20th century to 1980's**, 8 fat stock books of regular issues, semi-postal and Officials some mint from WWII forward, PLUS 8 albums and stock books of Air Post, used inflation, cut squares, etc., thousands and thousands of stamps with duplication. Also some labels and officials. . . . . ECV \$750 - 1,000
- 363 ★★田 **Germany, early 20th century, sheets and large blocks plus booklet panes and coils**, 3 stockbooks, one album plus sheet files and folders, hundred of sheets, many inflation issues and just post WWII, some back-of-book. A holding like this is seldom found anymore. . . . . ECV \$500 - 750
- 364 ○ **Germany, primarily 20th century, used packet stamps**, well sorted in glassines. Hundreds of thousands who knows, all contained in 20 double rowed small file boxes. Four boxes marked \* with primarily mint stamps from the Inflation WWII era, including Airs and Semis. These are worth a look. . . . . ECV \$2,000 - 3,000

- 365 ★○ **Germany, World War I and World War II Occupations**, thousands of mint and used stamps in 5 stock books, including Saar, Danzig, Bohemia, Moravia, Allenberg, France, Poland, Memel, Silesia, Austria Central Government issues etc, many duplicates. . . . . ECV \$200 - 400
- 366 ★○☒ **Germany, Post World War II**, Zones, Berlin, A.M.G., Russian, French, Baden, Wrttemberg, some covers, large blocks, some excessive duplication, well organized all in 6 stock books and one albums. . . ECV \$500 - 750
- 367 ☒ **Germany, Zeppelin Flight covers**, over 90 in one stock book including orgins from Italy, Egypt, Brazil, Japan, Spain, Poland, Neth, Indies, Argentina, Eritrea, Saar, also Chicago Flight, Polar, Sud Amerika, excellent selection, some a bit rough, but many very fine. . . . . ECV \$750 - 1,000

### Enormous Postal History Stock

- 368 ☒ **Germany, early to mid-20th century postal history**, the *incredible* extensive assortment of thousands of covers / housed in 10 steel file drawers, 10 file boxes and 19 stock books, very strong in Reich Post Inflation, Hindenberg issues, also locals, WWII with Occupations, wide variety of postal cards, also Feldpost, locals etc. Spend time on this lot viewing, as it is worthwhile. . . . . **ECV \$5,000 - 10,000**
- 369 ★○ **German Democratic Republic, the stock of thousands and thousands**, contained in four large stockbooks, plus some sheets and a file book of blocks of precancelled issues, including early Soviet Zones, semi-postals, officials, locals, booklets, majority used, a life-time accumulation. . . . . ECV \$750 - 1,000
- 370 ★○ **German Democratic Republic, also Russian Zones to 1970's**, a couple of thousand mint and used in 2 Elbe albums, including overprint sets, short sets, some back-of-the book, souvenir sheets, worthwhile to complete. . . . . ECV \$200 - 300
- 371 ○ **Great Britain, 1857, 1d rose red**, die II, perforation 14, letters in bottom corners. Reconstructed sheet of 240 used copies mounted on 5 pages, unusual centering, taken as cheapest . . . . . (20) \$2,760
- 372 ★★ **Great Britain: Channel Islands, about all or more than you can get**, all wrapped up in two white Ace albums, 1 Lighthouse Album and a cover book, a small stock book and envelope, probably all there is. . . ECV \$200 - 300
- 373 ★○☒ **Israel, the remainders**, in three ablums and file folders one good album with #1-9 and J1-5 plus the usual better items, other partialy filled, plenty to play with. . . . . ECV \$200 - 250
- 374 ★★ **Libya, 1929-83, collection of a couple hundred**, on display pages in one counter book, n.h., including Scott 95-101, 014-18, C43, CE1-2, EY1, sheetlets, unlisted imperf. varieties, proofs, strength in newer issues, catalogs \$2000 for listed only, very fine. . . . . ECV \$300 - 500

### COVER CONDITIONS

**Minor faults including, but not limited to, file folds not affecting stamps, small tears and some backflap damage have not been noted in the descriptions of the catalogue, and are not grounds for the return of a lot.**



Ex 375

- 375 ★ **Madagascar: British Consular Mail, 1884-86, group of nine stamps**, 7 unused, all but 1 with o.g., 2 used; 7 with small to few faults, #28 extensive, a useful assemblage, generally very fine. SG 8, 14,24, 26-28, 33b, 35, 38b; 3,400..... ECV \$500 - 600
- 376 ★○ **South Africa, 1926-41, remains of a very specialized collection**, in one large album with studies of 1926 Pictorials, 1929 No hyphen (include six 1sh pairs, hyphen), 1937 Coronation, 1941 War Effort in 3d cigarette variety, numerous other plate flaws, platings, varieties listed and unlisted. Mint and used, some water damage on Coronation and 1945 Settler but of little consequence. Very advanced and worth inspection..... ECV \$500 - 600



Ex 377

- 377 ★ **South Africa, 1931-39, Airflights**, the exhibition collection of almost 50 covers on 27 well documented pages. Also included maps, company letters, labels, etc. International are generally Imperial or KLM Airways, there are leg flights, internal and West Coast flights; This is far more than a beginners though additions would help as would an updated write-up to bring this up to a strong exhibition level..... ECV \$7,000 - 9,000
- 378 ★○ **Tannu Tuva, 1926-43, lovely collection of the Republic**, complete except 27 stamps, o.g. sets, used sets, some n.h. including 2 Sismondo Certificates all on Spec. Palo album pages. Generally very fine. Includes Hogg book on Postal History ..... (1/123a, C1-C18) \$1,865
- 379 ★○ **Vatican, 1929-90, collection of several hundred**, in 3 White House Specialty Albums. Some of the big issues are here, the 1934 Provisional set used, 1935 Congress n.h. or close to, a 1936 Zeppelin cover, issues to 1990, almost all unused with many n.h.; Needs to be finished..... ECV \$500 - 750
- 380 No Lot -

## Collections by Area

### Asia

- 381 S **China, 1932-41, collection of 152 stamps in 15 sets, all overprinted Specimen**, on stock pages and o.g. including Airs and Dues. These are machine overprints and purportedly sold in China. There is some question as to their period application, so sold as is. . . . . (between 290 and 470, C31-40, J59-66, J69-79) ECV \$300 - 400
- 382 ★○☒ **China and Japan, a box of assorted albums, album pages and glassines**, all areas represented except very early, lot of early mid 20th Century. Worth inspecting. . . . . ECV \$500 - 1,000
- 383 ★○ **China and Japan, thousands of stamps**, on album and stock pages plus sheets of Chiang-Kai-Shek issues, singles, generally used. Worth inspection. . . . . ECV \$300 - 400
- 384 ★ **Korea, collection of a few hundred l.h. stamps**, in Minkus Specialized album. Complete from 1946 to 1950 (#55-121 except Airs) Flag issues complete, sporadic thereafter, 1970's strong. Many popular sets and generally very fine. . . . . ECV \$1,500 - 2,000
- 385 ★○☒ **Asia, primarily Japan and China**, a useful accumulation of mint and used stamps, souvenir sheets etc, plus covers. The former is fairly well presented on approval cards, identified and catalogued, but not in any order. All jam-packed into one banker's box, Ex Odon Sandor. . . . . ECV \$1,500 - 2,000

### Europe

- 386 ★○☒ **Europe (Eastern), a truly outstanding holding**, of mint and used stamps, souvenir sheets etc., extensive early 20th century covers, only some recent, also sheets, documents, old magazines, collections, best we have seen in some time. All in 4 boxes, Ex Odon Sandor. . . . . ECV \$2,000 - 4,000
- 387 ★○ **Europe and Colonies, the extensive remainder of thousands and thousands**, housed in 11 packed stock books, mostly used, but fair selection of unused in more recent issues, strengths in Austria, France, Spain, Switzerland. Great lot to fill stock. . . . . ECV \$750 - 1,000

### British Commonwealth

- 388 ★○ **19th and 20th century, collection of thousands**, in 9 sparsely filled albums on mostly Scott pages, mostly short sets, some decent Asia, Great Britain, and Australian Roos (used) colonies worth adding to. . . . . ECV \$1,000 - 1,250
- 389 ○ **Primarily 20th century, stock of thousands of used stamps**, in 12 ring binders with stock pages and 5 thin stock books, plus some loose, virtually everywhere represented. . . . . ECV \$500 - 750
- 390 S **Specimens: group of almost 200**, on approval cards, from Victoria to George VI mostly part sets as listed in S.G. About 29 different colonies, generally very fine. . . . . ECV \$500 - 600

### British and Foreign

- 391 ★ **Primarily early to middle 20th century, thousands upon thousands of mint and used stamp**, mostly mounted on approval cards identified and catalogued. While disorganized by nation, there is a lot of truly superior material to be found. Far better than normally seen and very clean. Also collections. Lengthy inspection imperative. All in six boxes, Ex Odon Sandor. . . . . ECV \$5,000 - 10,000
- 392 ○ **Primarily 20th century, many thousands of used**, housed in 14 albums and 24 stock books, mostly cheaper but well organized mixed sets, duplicates, Middle East. . . . . ECV \$1,250 - 1,500

- 393 ★ **19th and 20th century, a very nice and varied selection of sets and rarities**, everything from a Penny Black to Roman States #11 o.g. (faults) with Raybaudi Certificate (catalogue \$4000) interesting and different German special airs. Well worth inspection. Great for eBay. . . . . ECV \$750 - 1,000
- 394 ★○☒ **19th and 20th century, the large remainder**, in 18 file boxes and one Gibbons Imperial Postal Card Album, thousands of used cheap stamps more or less filed in glassines lots of covers mostly recent but some early, dig through to find the gems. . . . . ECV \$300 - 400
- 395 ★○ **19th and 20th century, several hundred stamps**, on old time lot sheets (1950-60's) including Europe and Colonies, Germany, South America, British Commonwealth, and some Japan. All identified and ready for the internet. . . . . ECV \$750 - 1,000

### Worldwide Postal History

- 396 ☒ **19th and 20th century, thousands of covers**, basically unsorted but in filing boxes, everything from the classics to early air post, war periods, postal cards, not too many recent First Day Covers. Virtually no G.B., France, U.S. Asia, Russia, Eastern Europe. Sorting will really help this out Spanish Andorra will find the gems. All in 4 boxes, ex Odon Sandor. . . . . ECV \$2,000 - 0
- 397 ☒ **Covers, primarily early to mid 20th century**, about 45 are Belgium, but the value is in the Great Britain with some Czech Fieldpost there, 3 French, 1 Swiss wrapper. Malta stampless, some very collectable and still on old auction sheets. . . . . ECV \$350 - 500

### Worldwide

- 398 ★○☒ **19th and 20th century, a collection as received**, thousands of stamps contained in 9 cartons. Half the collection, but more than half the value is contained on approval cards generally in shoe boxes. This catalogues out by the owner at about \$200,000, some of them are quite old. Classic issues, replete, very little new issues. The other portion is generally collections, including crash covers, Vatican (5 albums), Guam (2 albums), general collection, plus others and covers. Excellent for eBay lots with alot of the work done. Sorting would enhance the return. . . . . **ECV \$15,000 - 20,000**
- 399 ★○ **The dealers stock virtually as received**, in 18 boxes, comprising numerous albums and stock books, a fair number partially filled, bricks of French Equatorial Africa imperforates, miniture sheets in original wrappers, plus regular sheets and of other areas. Some old, some new, some U.S. and British, some organized, some not. Lots of work and profit. . . . . ECV \$3,000 - 4,000
- 400 ★○ **Thousands upon thousands of stamps**, in 19 albums. 8 are individual countries or areas, including Benelux and Colonies, Greece, Spain, Israel, Latvia, Ghana. some US. Missing is older British, Germany, Scandinavia, Austria and France; One has to really inspect these books to find hidden gems. Also one filled carton of new issues including British. Organizing is worth while. . . . . ECV \$3,000 - 4,000
- 401 ★○☒ **The Super Storm "Sandy" Lot**, being the water damaged portion of a dealer's stock. All contained in about 25 cartons. There are bricks of stuck souvenir sheets, previously wet albums, stockbooks, glassines, etc. With work there is plenty of salvage material. . . . . ECV \$1,000 - 2,000
- This lot will only be available for viewing and pickup at our Yorktown Heights, N.Y. office. This lot will be too expensive to pack and ship, but worth picking up.*
- 402 ★○ **Mostly 20th century, the remainder of a very large collection**, in two banker boxes, folders of albums and stock pages, bags of stamps, loose envelopes, thousands of stamps, some sorted. Dig in. . . . . ECV \$200 - 300
- 403 ★ **Ex-Consul Weinberg**, only 22 stamps: 2 Hawaii, 2 Barbados, 6 British Honduras, Canada, Regis., 8c (no gum), 5 Paraguay, 4 Ecuador and a pair, 1 Chile, a few real choice, rest middling but from the greatest quality collector pre WWII. . . . . ECV \$250 - 300

**Worldwide Topicals**

- 404 ☒ **19th and 20th century, labels, poster stamps, stickers, etc.** Thousands and thousands jam-packed in two boxes; everything from almost every country, Olympics, Charities, Travel, Political (lots of including sheet margin's) Swiss Army, early Aero, Advertising, Philatelic etc. from ornate to plain, sheets, duplicates, truly needs some sorting by country and topic. Many better, Ex Odon Sandor. . . . . **ECV \$2,000 - 4,000**
  
- 405 ★★ **Religion, Madonna, Christmas, Mary, Daughter of Zion, small but interesting collection.** Usual recent Souvenir sheets and sets, but better Belgium, Orval, etc, Saar, few covers, Bavaria and separate group of Austrian stamps. . . . . **ECV \$150 - 200**

**Last Minute Addition!**

- 406 ★★★ **Egypt, 20th century, collection of a few hundred,** on display pages in one counter book, o.g., n.h. to o.g. including sets, blocks, souvenir sheets, errors and varieties. Good airs and other back-of- the-book. Generally very fine. Scott value \$3,500 for listed only.. . . . **ECV \$350 - 400**

End of Sale - Thank You

**WISHING TO CONSIGN?**  
The best number in Philately is 800-223-6076

**SPECIAL VIEWING - At Our Offices**  
The week prior to the auction, lots will be available for viewing at our offices in Yorktown Heights, NY.  
  
Located less than 40 miles from mid-town New York City.  
Convenient to Westchester Airport  
or  
a scenic 40 minute train ride along the majestic Hudson River.  
  
**Call for details and appointment.**



Please see our web site for additional photographs of many large lots:

<http://www.harmersinternational.com>

### **EXTENSIONS AND EXPERTIZING**

Any lots placed on extension for expertizing **MUST** be submitted by Harmers International, Inc. Submission by the purchaser will nullify any extension request. Therefore, upon notification of purchase, please contact us by mail, telephone, fax or e-mail with the lot numbers you wish to submit and the desired expertizer .

### **REGISTERING TO BID**

Remember, you **MUST** be registered to bid in this auction. Bidder Registration forms are included with this catalog, available on our web site ([www.harmersinternational.com](http://www.harmersinternational.com)), or by fax.

*Trade references are required (no societies or clubs).*

*Dealers must provide a copy of their resale certificate to avoid New York sales tax.*

Please register early!

### **BIDDING**

Harmers International offers you SEVEN forms of bidding in our auctions.

- 1) Mail
- 2) Fax
- 3) Agent
- 4) E-mail
- 5) Telephone
- 6) Live Internet
- 7) Live Tele-conference

## *Explore the Washington-Franklin Heads—and More—in The United States Reference Manual*




Calling upon the unsurpassed resources of expert studies

in *Mekeel's Weekly* (founded in 1891) and *STAMPS Magazine* (founded in 1932), *The Stamp News Publishing United States Reference Manual* is the only loose-leaf reference work available for the complete range of U.S. stamps. Written for the casual collector as well as the more advanced philatelist, *Reference Manual* pages are filled with background information, guides to separating same-design rarities from common varieties and tips on how to identify stamp fakes and forgeries.

**Order individual sets or purchase all eight sets—regularly \$149.50—now \$135, and receive free the \$9.50 Reference Manual binder with your name printed on the front cover!**

*(Please print your name as you want it printed on the binder cover.)*

### The U.S. Reference Manual!

**NEW: The Complete "How to Tell Them Apart" Study**  
**58 FULL COLOR pages, covering Scott 331 // 547, with each denomination treated separately and in depth.....\$39.50**  
 Also available in black & white.....\$19.50

• Also recently published:  
 • **The Washington-Franklins, Part 1, Sc. 331-366, 374-396**  
**58 pages, including helpful identifiers, background information, earliest known and other covers, and more in full color...\$32.50**  
 Also available in black & white.....\$16.50  
 • **The United States Grills, Sc. 79 // 144A.** 20 information-packed black & white pages, complete with high definition photos—including fakes—based on the expert writing of Wm. L. Stevenson and Lester G. Brookman....\$9.00

• **1919-1932 Commems, a black & white reprint of the Manual**  
 pages covering Sc. 537 // 715.....\$11.50



• **Bank Notes 1 (Scott 134-191)**  
 62 pages, including helpful identifiers, secret mark illustrations, postal history and more.....\$13.50

• **Bank Notes Part 2 (Sc. 205-29, 246-53)**  
 54 pages, including helpful identifiers, secret mark illustrations, postal history and more.....\$13.50

• **Columbians & Trans-Mississippi**  
 79 pages, an in-depth study of both popular issues.....\$14.50

• **U.S. Provisionals, Airs, Back-of-Book**  
 64 pages, including Provisionals in depth, some early airs, Locals, Postage Dues, and Offices in China.....\$15.50

• **FOR YOUR PAGES: a personalized 2" Reference Manual ring binder with spine insert and your name on the front cover!...\$9.50**

For Visa, M/Card, Discover & Amer. Expr. orders, card # (including 3-digit code on back) & expiration date:

Send Check, Money Order, or Charge Card Data to:  
 Stamp News, 42 Sentry Way, Merrimack, NH 03054  
 phone 603-424-7556, fax 800-977-7550, subs@stampnewsnow.com

## CONDITIONS OF SALE

### THE PLACING OF A BID SHALL CONSTITUTE ACCEPTANCE OF THE CONDITIONS OF SALE

#### BIDDING

1. Unless announced otherwise by the auctioneer, all bids are per lot, as numbered in the printed catalogue applicable to such auction (the "Catalogue"). Harmers International, Inc. (hereinafter "Harmers"), as agent for the consignor or vendor, shall regulate the bidding and shall determine the manner in which the bidding shall be constructed. Harmers reserves the right to withdraw any lot prior to the commencement of bidding (without liability to any potential purchaser or agent), to re-offer any withdrawn lot, to divide a lot and to group two or more lots belonging to the same consignor or vendor. Harmers has the right to refuse any bid believed not made in good faith, demand a cash deposit from anyone prior to bidder registration, or demand payment at the time the lot is knocked down to the highest bidder for any reason whatsoever. Harmers requires new customers submit a bidders registration form at least ten (10) days prior to the auction.
2. The highest bid acknowledged by the auctioneer shall prevail. Should a dispute arise between bidders, the auctioneer, in his sole discretion, shall determine who is the successful bidder and whether to re-offer the lot in dispute. Should a dispute arise after the sale, the auctioneer's sale records shall be conclusive.
3. **On all lots sold, a commission of 18% on the hammer price is payable by the buyer to Harmers.**
4. (a) The auctioneer reserves the right to bid on behalf of clients (and consignors or vendors) but shall not be liable for errors and omissions in executing instructions to bid, however received, notwithstanding whether such errors or omissions are those of the bidder, the bidder's agent or the auctioneer.  
(b) All lots are offered subject to a reserve price. The auctioneer, at his discretion, may implement such reserve price by bidding on behalf of the consignor vendor.  
(c) It may also be assumed that all consignors have been advanced monies against the sale of their stamps and Harmers therefore has a security interest over and above the auction commission.  
(d) Purchase made by a consignor or vendor or his agent on his own lots shall be considered as a sale and shall be subject to commissions and sales tax as set forth in these Conditions of Sale.  
(e) Agents are responsible for all purchases made on behalf of their clients, unless other arrangements have been confirmed by Harmers in writing prior to the auction.

#### PAYMENT FOR PURCHASES

5. Payment for lots and the commission payable with respect thereto, including those on which extensions are desired (see paragraph 9 of these Conditions of Sale), shall be as follows:  
(a) **Floor Bidders.** Payment of the purchase price and the commission applicable thereto, or such part thereof as Harmers shall require, shall be made by the purchaser in such manner as Harmers may determine. The name and address of the purchaser of each lot shall be given to the auctioneer immediately following the sale of such lot.  
(b) **Mail, On-Line and Telephone Bidders.** A successful bidder will be notified of lots purchased. Before Harmers will send such lots, payment in full (including the commission payable to Harmers) must be received by Harmers within three (3) business days of receipt of the aforesaid notification. However, a purchaser known to Harmers, or who furnishes satisfactory references, may, at Harmers' option, have purchases delivered or forwarded for immediate payment in US dollars. Mailed delivery will be to the registered address on the bid sheet and receipt of proof of shipment to the registered address shall constitute delivery. All charges for handling, delivery, and insurance (to the extent obtained by Harmers on behalf of the purchaser) shall be added to the purchase price. Risk of loss in transit shall be on the purchaser.  
(c) Credit Card and PayPal Users are subject to an additional 3% fee and may be requested for a bidding deposit.
6. Title shall not pass to the purchaser until full payment has been received by Harmers, as agent for the consignor or vendor.
7. (a) Purchasers agree to pay for lots as specified in paragraph 4 of these Conditions of Sale and no credit shall be extended. A late payment charge of 2% for the first month and 2 ½% for each succeeding month compounded shall be added and Harmers will charge on-file credit cards if payment is not made in accordance with aforesaid conditions.  
(b) In the event that a bidder shall fail to comply with these Conditions of Sale ("Non-Complying Bidder"), then, as to any lot with respect to which such failure to comply occurs, Harmers may, at its sole discretion, re-offer such lot during the same auction or at an auction at a later time, or by private treaty at such time as Harmers, at its sole discretion, deems appropriate. The Non-Complying Bidder shall be liable for the deficiency, if any, between the hammer price and the net proceeds of a sale to a subsequent purchaser (whether at auction or by private treaty), as well as for all costs and expenses of both sales, all other charges due thereunder (including commissions with respect to both sales, whether payable to Harmers or to a third party) and all incidental damages related thereto. It shall be at Harmers' sole discretion to determine whether to re-offer the lot theretofore hammered-down to a Non-Complying Bidder at the same auction, or by private treaty in due course, or at a subsequent auction, conducted by Harmers, and in no event shall any surplus

- arising from the sale of a re-offered lot be payable to a Non-Complying Bidder.
- (c) A defaulting purchaser shall be deemed to have granted Harmers a security interest in property in Harmers possession owned by such purchaser. Harmers shall have all the rights afforded a secured party under the New York Uniform Commercial Code with respect to such property and may apply against such obligations all monies held or received by it for the account against such obligations all monies held or received by it for the account of, or due from Harmers to such purchaser.
- (d) If Harmers takes any legal steps to secure payment of a delinquent account, the defaulting purchaser shall be liable for all legal and other expenses incurred by Harmers to secure such payment, including but not limited to a reasonable allowance for attorneys' fees. For purposes of this paragraph, the term "legal steps" shall be deemed to include any and all consultation by Harmers with its attorneys with respect to all matters arising out of a delinquent account.

#### EXHIBITION AND INSPECTION OF LOTS; QUALITY

8. (a) **On Premises Inspection and Postal Viewing.** Ample opportunity is given for on premises inspection prior to the auction date and, upon written request and at Harmers discretion, for inspection by postal viewing (all as detailed elsewhere in the Catalogue).  
(b) Each lot is sold as genuine and correctly described, based on individual description as modified by any specific notations in the Catalogue, including but not restricted to the section thereof entitled "Key to Cataloguing".  
(c) **Quality.** Any lot which a purchaser considers to be incorrectly described shall be returned to Harmers within two weeks of its receipt by such purchaser ("Returning Purchaser"), provided, however, that the same must be received by Harmers within four weeks of the date of the auction. Any lot, the description of which is disputed, must be returned intact in the condition received by the purchaser. Notwithstanding the foregoing, the following lots are not returnable, except at the sole discretion of Harmers: (i) lots from purchasers who attended the exhibition of lots; (ii) lots examined by postal viewing; (iii) lots on account of their appearance, if they are illustrated in the Catalogue; (iv) lots described as having repairs, defects or faults; (v) U.S. stamps (through 1918) for reasons of paper inclusions; (vi) no encapsulated stamp (unless originally offered in this condition); (vii) lots containing more than ten (10) stamps; and (viii) contradictory grading certificates.

#### EXTENSION OF TIME FOR CERTIFICATION

9. When an opinion from a "generally recognized authority" is desired by the purchaser:  
(a) A request for expertizing must be made to Harmers, in writing, within 7 days of the date of the auction. The request must include the name and address of the "generally recognized authority". The "generally recognized authority" must be approved, in writing, by Harmers.  
(b) **Harmers, and only Harmers, will submit the item to the agreed upon expert.**  
(c) If a lot is certified by a "generally recognized authority" to be other than as described, or the authority declines to express an opinion, this is normally grounds for the return of a lot.  
(d) Except to the extent set forth in paragraph 10 of these Conditions of Sale, payment of the expense of certification will be paid by the purchaser.  
(e) In the event that a dispute cannot be resolved by reference to a "generally accepted authority" and Harmers thereupon undertakes to re-offer the lot with a description identical to the description disputed, the Returning Purchaser shall be liable for the deficiency, if any, between the proceeds of the sale to the Returning Purchaser and the proceeds of a sale to a subsequent purchaser, as well as for all costs and expenses of the re-sale, including commission, and all incidental damages.

#### EXPENSES OF CERTIFICATION

10. Expenses of certification shall be borne by the purchaser, except where a lot is certified "other than as described" and is returned to Harmers in accordance with paragraph 9 of these Conditions of Sale. Expenses incurred in the submission and the return of a lot under paragraphs 8 or 9 of these Conditions of Sale are not refundable, except the cost of the certificate itself.

#### SALES TAX

11. Unless exempted by law, a purchaser shall pay New York State and local sales taxes, or any compensating use taxes of any other State or government authority (collectively, "Taxes"). A purchaser claiming an exemption from payment of any Taxes shall provide evidence acceptable to Harmers of such exemption

#### APPLICABLE LAW, JURISDICTION, ETC.

12. All matters arising out of this auction shall be governed by the laws of the State of New York, without giving effect to the choice of law principles thereof.
13. Any controversy or claim arising out of or relating to this auction shall be settled by arbitration in the City of New York, State of New York by a single arbitrator in accordance with Rules of the American Arbitration Association and judgment upon the award rendered by the arbitrator may be entered in any Court having jurisdiction, provided, however, that notwithstanding the foregoing, if either party determines that emergency relief is required in the nature of a temporary restraining order or preliminary injunction that such party may, without being in violation of this paragraph 13, commence such emergency proceedings without the involvement of the American Arbitration Association or an arbitrator, whether or not an arbitration proceeding has been commenced.
14. The purchaser at auction (a) consents and submits to the jurisdiction of the Courts of the State of New York and of the Courts of the United States for a judicial district within the territorial limits of the State of New York for all matters arising out of the auction sale, including with out limitation, any action or proceeding instituted for the enforcement of any right, remedy, obligation and liability arising under or by reason thereof; and (b) consents and submits to the venue of such action or proceeding in the City and Country of New York (or such judicial district of a Court of the United States as shall include the same).

# Harmers



# International Inc.

1325 Echo Hill Path, Yorktown Heights, New York 10598 USA

**NOT Affiliated with  
H.R. Harmer, Inc.**

☎ 212.532.3700 Fax: 914.962.5885 Email: bids@HarmersInternational.com

DATE OF AUCTION \_\_\_\_\_

Are you a New Client?  Yes  No  
(If Yes you must complete a New Client Registration Form)

Please Limit My Purchases to \$ \_\_\_\_\_

Are you a Stamp Dealer?  Yes  No  
(If Yes you must provide a copy of your Re-Sale Certificate or VAT)

Preferred Contact Method: \_\_\_\_\_

I UNDERSTAND THAT A 18% BUYER'S PREMIUM WILL BE ADDED TO THE "HAMMER" PRICE ON EVERY LOT.

Name: \_\_\_\_\_ Company: \_\_\_\_\_

Address: \_\_\_\_\_

City: \_\_\_\_\_ State: \_\_\_\_\_ Zip \_\_\_\_\_ Country \_\_\_\_\_

Phone: \_\_\_\_\_ Alt. Phone: \_\_\_\_\_ eMail: \_\_\_\_\_

Shipping Address if Different from Above: \_\_\_\_\_

Signature \_\_\_\_\_ Date: \_\_\_\_\_

Below are the highest prices I agree to pay for each of the lots listed, it being understood that they will be sold to me below my limits if the auction permits. **I have read and agree to the "Conditions of Sale" in your catalogue.**

By Submitting this bid, I understand that: A) The amount of my bid does not include the 18% Buyer's Premium to be added to the "hammer" price, B) I am responsible for NY State Sales if applicable C) I am responsible for all Shipping fees, Customs and Duty fees Etc. if applicable, D) Unless I provide proof of insurance through my own carrier, I will be charged for transit insurance, E) If I choose to pay by credit card, a 3% fee will be added to the total charge, F) Bids are not considered RECEIVED unless they have been acknowledged by telephone or e-Mail by Harmers International. F) Unknown Bidders may be required to provide a 25% bidding deposit or credit card authorization.

Please note after the bid, if you wish the lot EXPERTISED and indicate the Expert.

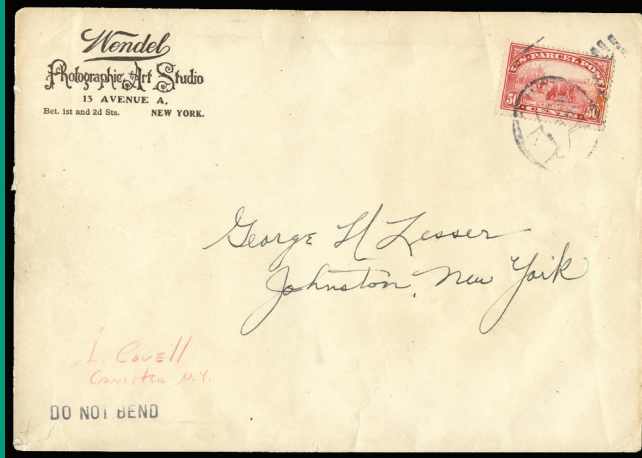
Lot No.	Limit \$	Tick for Expert.	Lot No.	Limit \$	Tick for Expert.	Lot No.	Limit \$	Tick for Expert.	Notes:

**BIDDING LEVELS**

Up to \$ 150 .....\$ 5  
 \$150 - \$ 300 .....\$10  
 \$300 - \$ 600 .....\$25  
 \$600 - \$1,500 .....\$50  
 Over \$1,500      apx. 5%

Bids which do not conform to the above will be automatically reduced to the correct level.

IF NECESSARY, INCREASE MY BIDS BY  10%    20%    BREAK TIE BIDS TO SECURE MY PURCHASE  
 I am also interested in selling. Please contact me.



October 14, 2013