

United States, B.N.A., Foreign France & British Commonwealth



Wednesday, 29 June 2016

AT THE COLLECTORS CLUB, NYC

Viewing at World Stamp Show NY 2016

Harmers



International Inc.

World Stamp Show



FRANKLIN VANDERBILT JR. U.S. • ANTHONY MOODY SR. C.G.H.

WILLIAM RANDEL AUTOGRAPHS • EX "JOHN CHAPIN" NEWFOUNDLAND

"PALADIN" UNITED STATES

KET TO CATALOGUING

SYMBOLS

* Unused	** Never hinged	O Used
☒ On cover	Δ On piece	S Specimen
⊕ Block of Four	ⓑ Block larger than four	E Essay
TC Trial Colour	DP Die Proof	PP Plate Proof

MAJOR ABBREVIATIONS

c.d.s. = Circular Date Stamp; C.T.O = Canceled to Order;

F.D.C. = First Day Cover ; ms. = Manuscript; var. = Variety

CONDITION

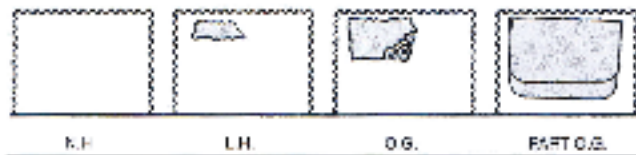
The various gradings of stamps are, in order; superb, extremely fine, very fine, fine. In the case of sets, large blocks, sheets, etc., the condition quoted represents the average, and quality above and below this standard can be expected.

Mixed Condition: In large lots, the condition is generally expected to range from fair to at best fine. Serious defects can be expected.

Handstamp on reverse: Denotes either a dealer, collector or indecipherable expert's mark.

Signed by: Denotes either the actual signature or mark of the expertiser. The absence of mentioning a signature does not reflect on the ability or knowledge of the party involved

GUM:



Shaded portion can represent an actual hinge or the area disturbed by a hinge.

n.h. = Never Hinged – unused with original gum in Post Office state and unmounted.

l.h. = Lightly Hinged – unused with full original gum showing some evidence of a previous hinge which may be present in part or entirely removed.

o.g. = Original Gum – unused with original gum somewhat disturbed by previous hinging which may still be present.

part o.g. = Part Original Gum – unused with original gum, large hinge remnants may or may not be present.

disturbed o.g. = Disturbed Original Gum – unused with original gum affected by sweating, glazing or mount disturbance; may not resemble the original gum.

unused = Unused without gum.

Ungummed = Unused without gum, as issued.

BLOCKS OR SHEETS AND THEIR GUM: Minor separations are the rule rather than the exception, in the case of blocks or sheets of any size. A few separations, around four perfs. per row, do not affect the value of a block or sheet and are not grounds for the return of a lot.

CATALOGUE VALUES: The final column shows the catalogue value of the lot.

ESTIMATED VALUES: If the estimated cash value is given, it is shown in the description and always indicated by the abbreviation "Est. Cash Value". It is used where the lot is large or where the actual value has little relation to the catalogue price. It represents the auctioneer's appraisal of the true MARKET value of a lot.

PLEASE NOTE – CREDIT CARDS : A 3% fee will be charged to credit card and PayPal users and a bidding deposit may be requested.

OVERSEAS BUYERS: We require that payment be made by credit card, bank draft, wire, or cheques in U.S. dollars made payable on a U.S. bank.

BIDDING LEVELS

Up to \$ 150	\$5
\$150 - \$300	\$10
\$300 - \$600	\$25
\$600 - \$1,500	\$50
Over \$1,500	approx. 5%

Bids which do not conform to the above will be automatically reduced to the correct level.

BIDS BY TELEPHONE

- Reservations must be made at least 2 days prior to the sale.
- Any errors are the responsibility of the bidder.

BIDS BY FAX or E-MAIL

Must be received no later than 2 hours before the session commences.

And **MUST** be confirmed by a reply from a Harmers International representative.

Fax: 914.962.5885 E-Mail: bids@harmersInternational.com

VALUATION OF LOTS

Valuations of all lots are available the week prior to the auction upon request.

GUM DESCRIPTION

Recognizing that there are occasional differences of opinion concerning gum nomenclature by various expert committees, for example, a stamp described as o.g. being certified as large part o.g. or even part o.g., this minor classification discrepancy alone is not sufficient grounds for return.

COVER CONDITION

Minor faults, including but not limited to file folds, not affecting stamps, small tears and some back flap damage have not been noted in the descriptions and are not grounds for return.

REGISTERING TO BID IN OUR SALE

Bidders must be registered to participate in Harmers International Auctions. Bidder registration forms are included with catalogues, are available on our web site, www.HarmersInternational.com or by request.

Trade references are required (no societies or clubs). Dealers must provide a copy of their Resale Certificate to avoid NYS sales tax.

ONLINE BIDDING

Live on-line bidding is available. We are not responsible for technology issues that may impact communication of bids.

EXTENSIONS AND EXPERTISING

Any lots placed on extension for expertising **MUST** be submitted by Harmers International, Inc.. Submission by the purchaser will nullify any extension request. Therefore, upon notification of purchase, please contact us with the lot numbers you wish submitted and the expert.

Auction Agents

Charles E. Cwiakala
1527 S. Fairview Ave.
Park Ridge, IL 60068 U.S.A.
Tel/fax (847) 823-8747
CECwiakala@aol.com

Purser & Associates
84 Webcower Rd., #2
Arlington, MA 02474 U.S.A.
Tel. (857) 928-5140
Fax: (781) 777-1023
Email: info@pursers.com

Jean-Claude Michaud
15 Briarwood Crescent
Halifax, NS B3M1P2 CANADA
Tel. (902)443-5912
Fax (902)445-5795
Email: jcm.ph@ns.sympatico.ca

Mary Weeks
8 Old House Close,
Ewell, Epsom, Surrey, KT171LE
ENGLAND
Tel. (020)8393-8217
Fax (020)8393-1332
Email: mary@maryweeks.demon.co.uk

Frank Mandel
P.O. Box 157
New York, NY 10014 U.S.A.
Tel. (212)675-0819
Fax. (212) 366-6462

Harold Gordon
614-6505 CSL Road
Montreal, QC H4V1G3
Tel/fax (514) 488-0445
CANADA
Email: hbgordon@videotron.ca

Jean Lancaster
20 Milner Road
Kingston-on-Thames
Surrey, KT1 2AU ENGLAND
Tel (020)8547-1220
Fax. (020)8547-3739
Email: jean.lancaster@lineone.net

Jochen Heddergott
Bauerstrasse 9
D-8000 Munchen 40 GERMANY
Tel. (089) 272-1683
Fax (089) 272-1685
Email: mail@philagent.com

**UNITED STATES
BRITISH NORTH AMERICA, COMMONWEALTH
FRENCH POSTAL HISTORY & FOREIGN**

The Franklin Vanderbilt Jr. U.S

The "Paladin" U.S.

The William Randel Autographs

The Ex. "John Chapin" Newfoundland

The Anthony Moody Sr. Cape of Good Hope

and the properties of twelve other owners

**SALE To take place in New York City at:
The Collectors Club, 22 East 35th Street
Wednesday, June 29, 2016 beginning at 1:00 PM**

EXHIBITION OF LOTS

28th of May to June 4th 2016 at the World Stamp Show NY 2016
Booth Number 671
at the Javits Center, New York City
and
June 28th & 29th at the Collectors Club from 10am to 6pm or by Appointment

To be sold at Auction by

Harmers  *International Inc.*

Office Located at: 1325 Echo Hill Path, Yorktown Hts, NY, 10598

Telephone: (212) 532-3700

Fax: (914) 962-5885

Email: info@HarmersInternational.com

Keith A. Harmer – Licensed Auctioneer, License Number 1345246

On all lots sold a commission of 18% on the hammer price will be payable by the buyer (additional internet bidding surcharge may apply refer to your bidding platform)

Wednesday, 29 June 2016

1:00 P.M.

1

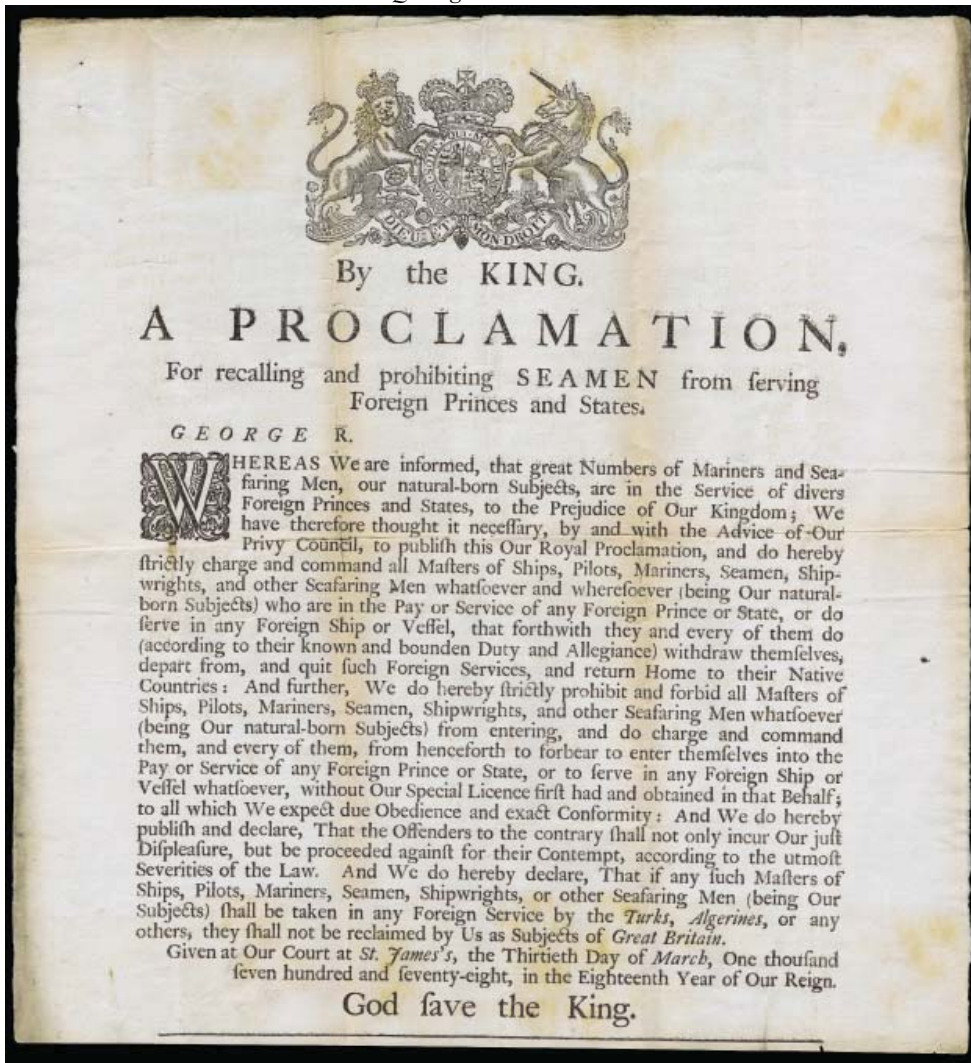
Significant Revolutionary War British Proclamation. This is a 13 March 1778 Proclamation by Britain's King George prohibiting British Seamen from Serving on foreign vessels. It is addressed to "the great numbers of Mariners and Seamen" "our natural-born" subjects and it is particularly addressed indirectly to British Seaman serving in Rebel American ships, as well as French ships.

The issue of prohibiting British subjects from serving on foreign vessels carried on into the next British / American war.

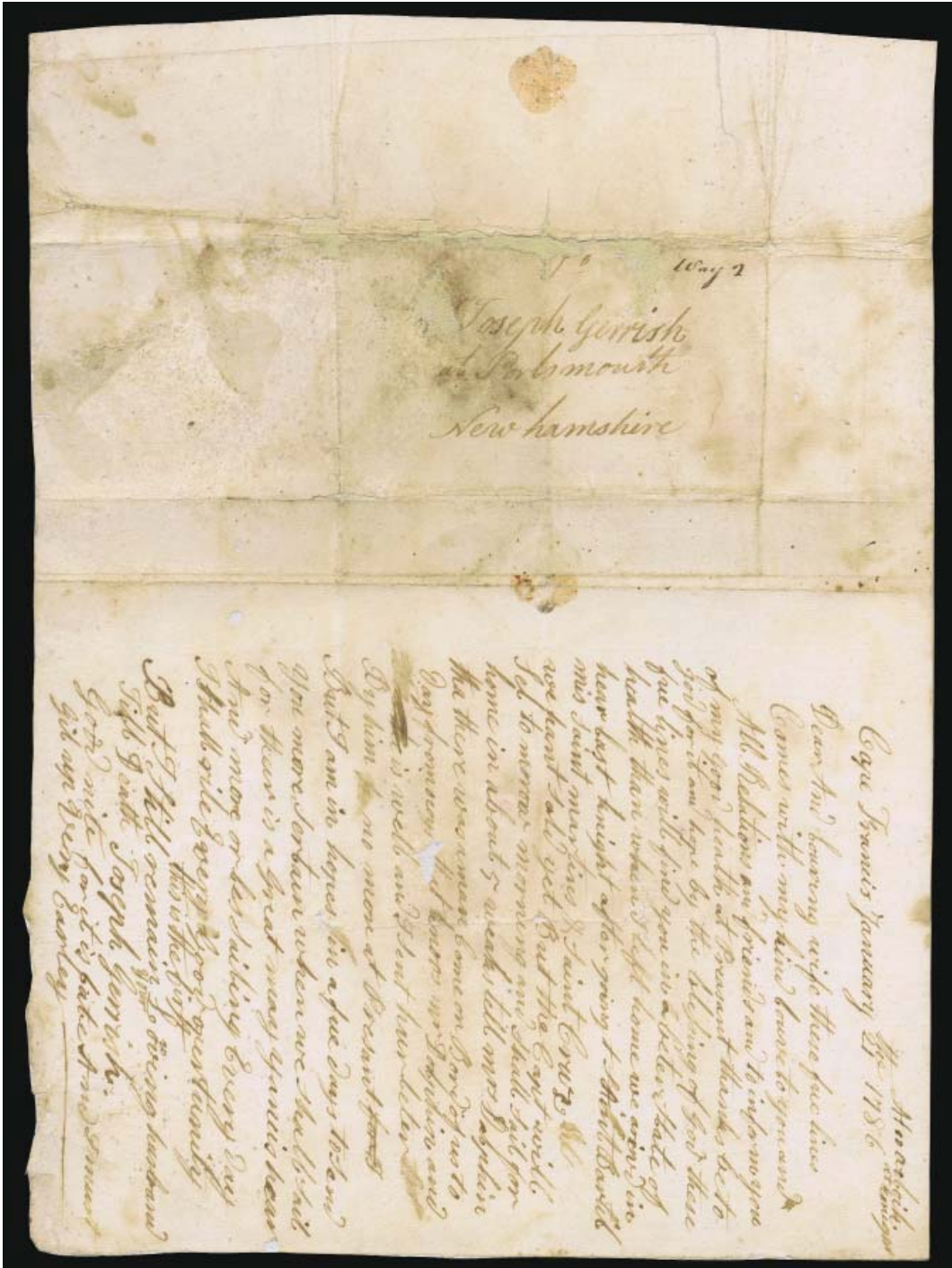
Large Royal Coat of Arms top centre, impressive item, size 13" x 14" with a partial separation along horizontal file fold. Also includes a slip printed on velum with manuscript endorsement to the Sheriff of the County of Northumberland..... Est. Cash Value

\$750 - 1,000

A wonderfully specific example of the frustration the British had with the very organized and professional American maritime service of naval warships and private commerce. Something to be proud of. Quite good condition.



UNITED STATES



2



18th Century Transatlantic U.S. Way Cover from Cape of Good Hope

Lot 2 will be offered as Lot 279 in this catalogue listed under Cape of Good Hope, Date-lined "Cape Francis January the 21 1786 Atoorboik at knight" folded stampless letter, museum quality backing with acid free Japanese paper, bearing on front at top right manuscript "P - - - (probably Ports) Way 2" annotated by a post man on receipt, probably at the Portsmouth N.H. docks..... Est. Cash Value \$1,000 - 1,500

This cover is extremely significant as it is the earliest known stampless cover from the Dutch Cape, with a postal marking, other than a few "Cleft Stick" (Hottentot Runner) local covers, and is probably unique as a transatlantic usage, pre-British Occupation. As a side note, Cape Francis was made famous in the iconic surfing movie, "The Endless Summer".

The letter is from Joseph Gerrish, to his wife in Kittery Maine via Portsmouth N.H. It details his trip and stops on the way, and is written the morning after he arrived, because the ship was leaving the next day to go home. Joseph Gerrish (1732-1812) graduated Harvard in 1752, head of his class and was buried on Gerrish Island Maine.



14 ☒ Used to Canada: 1847 10¢ black, clear to large margins all around, almost very fine, tied by red square grid together with replacement Bouton's City Dispatch 2c black with red PAID BOUTON 2-line cancel on folded letter bearing New York NOV (?) 21 c.d.s., manuscript "11", additional red Bouton postmark and Montreal NO 24 1848 transit, on reverse blue PONTE-LEVI with manuscript. "27 NOV 1848" in centre receiver, however cover redirected back to Montreal with Nov 30 eventual receiver. Interesting transiting and rare despite deficiency., There was no example of this combination in the Golden collection..... (2, 18L2). \$5,000 as complete

15 q Re-Issue 5¢ red brown, and 10¢ black, good to large margins all around, 10c faint thin, without gum as issued, still very fine (3, 4). \$1,900



1851 - 57 Issue



16

17

16 O 1¢ blue, type Ia, Position 100L4, lightly cancelled, good margins to touched only at a few scrolls. A fresh and fine copy of this very rare stamp, very fine. Foundation Cert. (1974). (6). \$11,000

17 O 1¢ blue, type III, good to large margins all around showing some portions of adjacent stamps at sides, very fine. Foundation Cert. (1971).(8). \$2,250

1857 - 61 Issue

18	✉	1¢ blue, type I , fine copy, neatly tied by NEW YORK STATION D/ 1M __ 30 c.d.s. on local envelope. Very simple and attractive example of the carrier rate. (18)	\$700
19	✉	5¢ red brown , type I, fine, tied by NEW ORLEANS NOV 8 c.d.s. on folded letter sheet bearing red NEW YORK c.d.s. transit, manuscript rate, on reverse red London transit and red ROTTERDAM 24-11-1857 receiver (28)	\$1,250
20	O	5¢ bright red brown, type I , lightly cancelled, well centered, small faults, very fine appearance. Foundation Cert. (2015). (28b).	\$2,300
21	q	5¢ orange brown, type II , o.g., one perforation only barely touched at top, very lovely color, a hard copy to find so nice, o.g., very fine (30).	\$1,250
22	✉	Used to Great Britain: 1857 12¢ black, plate I, PAIR , centred to bottom, tied by blue LEXINGTON KY OCT 12 c.d.s. strikes on envelope bearing red LONDON OC 31 59 PAID c.d.s. transit and red "3" on reverse duplicate LONDON W. receiver. (36).	\$800
23	q ⊕	12¢ black, plate III, Bottom Sheet Margin Block of Four, positions 87,88,97, 98 L, original gum, intact but for top right stamp rejoined, a fine and rare position piece. Ex Ishikawa Lot 321.... (36B).	\$5,000 as block of four
24	q	30¢ orange , original gum, just a touch oxidised well centred for this stamp, almost very fine. "Paladin" horsehead handstamp. (38).	\$2,150
25	P	5c 90¢ blue, plate proof on India , margins all around, thin, very fine appearance (39P3).	\$1,250

1861 to 1866 Issues

26	O	3¢ pink , neat light grid cancel, rich true color, all perforations clear, very fine. Foundation Cert. (2015). (64).	\$700
27	q	3¢ lake , deep color, slightly disturbed o.g., fine. Foundation Cert. (1970) as #66 and (2015) cert. as 66TC6. (66 / 66TC6).	\$2,000
28	q	12¢ black , sharp fresh color, o.g., very fine. "Paladin" horsehead "knight" handstamp. (69).	\$1,800
29	q	30¢ orange , somewhat disturbed o.g., fresh bright color, perforations clear of design, almost very fine (71).	\$2,750
30	✉	Used to Klausen, West Prussia: 1861-66, 10¢ green and 5¢ red brown , perfs touch or in, tied by red grids on manila envelope (two small holes), bearing red NEWARK N.J. MAR 20 PAID, red NEW YORK PAID 10 MAR 21 c.d.s. strikes, and boxed FRANCO, on reverse Hamburg 4/5/ transit.. <i>Very rare destination.</i> (75,68) Est. Cash Value	\$200 - 250
31	q	24¢ lilac , fresh color, bend or very light crease, part o.g., fine (78).	\$2,750

The 1867 Grills

32	O	2¢ black, D. grill , neat segmented cork cancel well centred, "reperfed at top " fresh and, very fine appearance. Foundation Cert. (2015).(84).	\$4,500
33	O	3¢ rose, D. grill , light bar cancel, one short perf., almost very fine(85)	\$1,050
34	✉	3¢ rose, D. grill , few short perfs, otherwise fine, tied by segmented cork cancel and hinged (for grill id) to envelope bearing red 2 ring CHARLESTOWN MASS APR 9 68 c.d.s. to Boston(85)	\$1,200
35	O	12¢ intense black, Z. grill , head-free cancel, well centred, corner crease, almost very fine.....(85E)	\$2,500



36	△	<p>Used to Genoa, Italy: 1867 E. Grill 2¢ black Pair (few sort perfs) and 10¢ green (off-centre) E. Grill, all tied by wedge cancels on most of a front (plus some reverse with postmarks) bearing red NEW YORK PAID ALL MAR 5 c.d.s., large black PD, various manuscript, red boxed BREMEN 17-3-68 FRANCO transit, on reverse Italian 21 MAR 68 c.d.s. transit..... (87,89). <i>The stamps have been hinged on the front to certify the grills. This is dated 2 days before the EKV listed by Scott. An exhibition item.</i></p>	<p>\$775 stamps off cover</p>
37	q	<p>5¢ brown, F. grill, o.g., almost perfect centring “tiny surface scuff and ... slightly dry printing around vignette”, impressive stamp. Foundation Cert. (2015) (95).</p>	<p>\$3,500</p>
38	q	<p>15¢ black, F. grill, o.g., well centred and sharp color, reperforated, very fine appearance(98).</p>	<p>\$4,250</p>
39	q	<p>30¢ orange, F. grill, unused, lovely grill impression, fresh, almost very fine.....100).</p>	<p>\$3,250</p>

1869 Issue

40	q / O	<p>1¢ to 90¢ Complete set used except 1¢, 6¢ and 12¢ unused, faults, presentable set.....(112 to 122).</p>	<p>\$6,587</p>
41	q	<p>12¢ brown, o.g., fresh deep color and excellent centering, extremely fine. Paladin horsehead “knight” handstamp..... (113).</p>	<p>\$550</p>
42	q q ⊕	<p>3¢ ultramarine, Arrow Block of Four, small part o.g., major separations from being stuck down on black paper subsequent to clean certificate. Foundation Cert. (1986).(114).</p>	<p>\$1,400 as block of four</p>
43	q	<p>10¢ yellow, o.g., incredible grill, inclusion, fine..... (116).</p>	<p>\$2,000</p>
44	q	<p>15¢ brown & blue, type II, large part o.g., well centred, “few toned perfs”, reperfed, very fine appearance., large part o.g. Foundation Cert (2016).....(119).</p>	<p>\$3,250</p>
45	⊗	<p>15¢ brown & blue, type II, almost very fine, neatly tied by SAINT MARY’S OH c.d.s. on 1870 court papers envelope containing depositions (a bit trimmed and reinforced), to Delaware. Interesting use of the 15¢(119).</p>	<p>\$825</p>
46	⊗	<p>15¢ brown & blue, type II, perfs touch, tied by four ring target cancels on 3c pink Registered entire (U58) bearing CLAREVON AUG 20 MINN c.d.s. to Winona, Minn. Rare stationery combination.(119, U58).</p>	<p>\$825</p>

The Paladin Collection

The Origin of the “Paladin” Collection of U.S. stems from the actor Marc Marno born in New York city to a French mother and Japanese father. He was generally a Japanese character actor; on Broadway “World of Susie Wong”, etc.,; in film “Diamond Head, etc. and T.V. Hawaii 5-O and “Have Gun Will Travel”



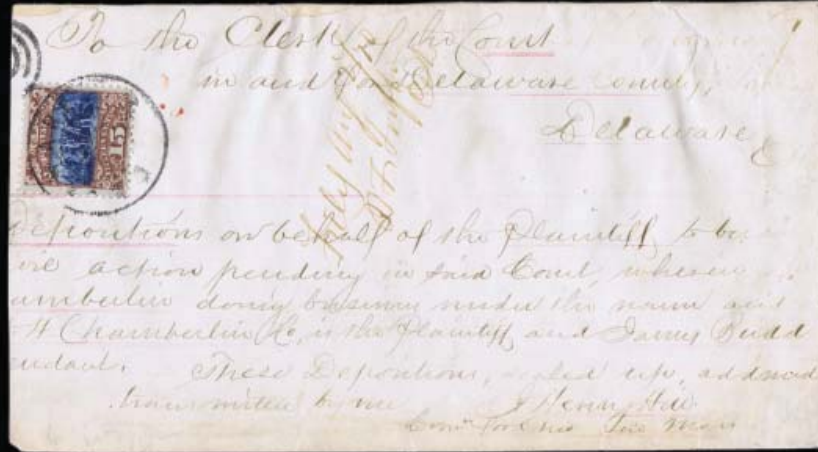
hence, the marking on the reverse of his stamps - the knight chess piece, the marking on Richard Boone’s holster. - They were good friends.
 See Photos on the backs of stamps (available on our website)



36



46



45

42



40 Ex.



37



38



39



41



43



44



47



48



49

- 47 q 24¢ green & violet, unused, well centred, bright color, very fine. Foundation Cert (2015)..... (120). \$2,800
- 48 q 30¢ ultramarine & carmine, unused, fresh colors, top right perf added and single tone spot removed, fine. Foundation Cert (2015)..... (121). \$1,650
- 49 O 90¢ carmine & black, very "faintly cancelled" bright rich colours unusual for a used copy, extremely fine. Foundation Cert (2015)..... (122). \$1,900



50



51



52



53

50	q	2¢ brown , lovely color and centering, unused, extremely fine. Foundation Cert.(1985).....(124).	\$260
51	q	6¢ blue , unused, fresh color and centred, extremely fine. Foundation Cert.(1984).(126).	\$775
52	q	15¢ brown & blue, type III , unused, bright colours, centered, very fine. Foundation Cert. (1983). (129).	\$600
53	q	30¢ ultramarine & carmine , unused, bright colours, well centred, very fine. Foundation Cert. (1975).(131).	\$1,100

Bank Note Issues

54	q	1871, 7¢ vermilion, H. grill , o.g., hinge remnant, fresh bright color and distinctive grill, one “tiny perforation thin”, fine. Foundation Cert (2015).....(138).	\$4,250
55	q	1870, 24¢ purple , large part o.g., brilliant color and exceptional centreing for this issue, extremely fine. Foundation Cert (2015)..... (153).	\$1,800
56	✉	1870, 30¢ black and 6¢ carmine , fine, both with some perforation faults, tied by cork cancels on somewhat trimmed legal envelope bearing black BOSTON SEP 8 c.d.s. and manuscript “Fd. 8th Sept 1870” to Baltimore. An early usage for the 30¢(154,148).Est. Cash Value	\$200 - 250
57	✉	1870, 30¢ black , fine, tied by blue CINCINNATI O. JAN 28 c.d.s. on 1874 mailed court document envelope (some inevitable faults) containing depositions against the Ohio and Mississippi Rail Way Company, to the Jackson County Court House(154).	\$900
58	O	Used in China: 10¢ brown , cancelled by blue YBBCHINA NOV 12 1873 c.d.s., fresh and fine. Ex.Stollnitz.... (161).....Est. Cash Value	\$100 - 150

1893 Columbian Exposition

59	P ⊕	Plate Proofs on Card, Blocks of Four , 1¢, 3¢, 4¢, 5¢ and Pairs of 6¢,8¢, 3c has a scissor cut between 2 stamps, all hinged, generally very fine.(230, 232-236, P4).	\$1,070
60	q	1¢ to \$2 , o.g. to unused, most high values without gum some faults.....(230-242).	\$1,873
61	q	1¢ to 30c , l.h. to o.g., plus 1,4c, 5c (3 copies one creased), fine group.....(230-239).	\$1,523
62	q q	10¢ black brown Vertical Strip of Five plus Single , n.h., fine to very fine(237).	\$1,710
63	q q	15¢ dark green , well centred, two improved perfs, fresh and, never hinged, still very fine(238)	\$675
64	q	\$1 salmon , l.h, almost very fine (241).	\$1,100
65	q	\$2 brown red , l.h., very fine(242).	\$1,150
66	O	\$2 brown red , faint crease, centred, very fine appearance.....(242).	\$600



54

55

58



56



60 Ex.



61 Ex.



57



63



64

62 Ex



59 Ex.



65



66

COVER CONDITION

Minor faults including, but not limited to, file folds not affecting stamps, small tears and some backflap damage have not been noted in the descriptions of this catalogue.

BLOCKS & PLATE BLOCKS



67

67 q q ⊕ 1¢ deep blue, Bottom Plate Block of Eight, never hinged, insignificant wrinkle, very fine (230).

\$1,050



68

68 q ⊕ 2¢ brown violet, Bottom Plate Block of Nine, never hinged except 3 stamps o.g., fine to very fine.. (31).

\$634

"Stamp Collecting dispels boredom, enlarges our vision, broadens our knowledge, makes us better citizens and in innumerable ways, enriches our lives"

- President Roosevelt

His collection was sold by the Harmer Family



69

69 qq ⊕ 3¢ green Bottom Right Corner Plate Block of Ten, never hinged, quite well centred for such a large multiple, brilliant color and fabulous gum, very fine(232) \$2,310



70

70 qq ⊕ 4¢ ultramarine, Bottom Right Plate Block of Ten, never hinged, excellent centering for such a large multiple some large vertical separations but still intact, deep color and wonderful gum, very fine but fragile(233) \$3,570



71

71 qq ⊕ 5¢ chocolate, Block of Four with Plate Number and Part Imprint, never hinged, brilliant color, fine (234) \$640



72

72

qq ⊕

6¢ purple, Bottom Plate Block of Six, never hinged, exceptional centering and brilliant color, very fine(235).

\$2,000



73

73

qq ⊕

8¢ magenta, Bottom Left Corner Block of Eight with Imprint and letters, never hinged, wonderful color, outstanding centering probably the last time you will see this block intact.,extremely fine(236).

\$1,280+

Looking for more photos?
Go to www.HarmersInternational.com



In an Industry Where Tradition Matters...

The Harmers look forward to seeing you at **Booth #671.** For your viewing and buying pleasure we offer:



Keith A. Harmer



Brandon J. Harmer



Private Treaty



Classic US, Great Britain & Commonwealth, and Foreign Stamps and Postal History



Bernard D. Harmer Stamp Boxes, Letter Scales, Framed Art and Valentines



Viewing of our Upcoming Summer Auction.



Consultations with our Auction Department to discuss:



The sale of your collection or rarities.



Questions you may have regarding the market.

Harmers



Also Offices In London.
(P) 01144 207 989 3700

NOT Affiliated with
H.R. Harmer, Inc.

International Inc.

1325 Echo Hill Path, Yorktown Heights, NY 10598
Phone: 212.532.3700 Email: info@HarmersInternational.com
www.HarmersInternational.com



- 74 q q **1895, 6¢ dull brown, Imprint and Plate number 184 strip of Three**, never hinged, fine to very fine .(271). \$1,250
- 75 q q **1895, 8¢ violet brown Tall Imprint and Plate number 58 strip of Three**, never hinged, fine to very fine. ...
.....(272). \$750

1898 TRANS MISSISSIPPI ISSUE

- 76 q / o **Issue Complete**, 1c to 10c l.h to o.g. 50c, \$1.00, \$2.00 used, few faults.(291-293). \$2,585
- 77 q **\$1 black**, o.g., well centred, very fine.....(292). \$1,400
- 78 q **\$1 black**, unused, intense color, excellent centering, extremely fine..... (292). \$800

BLOCKS & PLATE BLOCKS



- 79 q q ⊕ **1¢ dark yellow green, Top Plate Block of Four**, never hinged, deep, deep shade, light negligible selvage crease, fine..... (285). \$400



80

80 q q ⊕ 2¢ copper red, Wide Top Plate Block of Six, never hinged, deep color, outstanding centering, very fine (286). \$750



81



82

81 q ⊕ 4¢ orange, Top Plate Block of Four, hinged only in selvaige, well centered and deep color, very fine ..(287). \$1,200

82 q q ⊕ 5¢ dull blue, Top Plate Block of Four, never hinged, deep color, fresh gum, very fine(288). \$1,600

EXTENSIONS

Any lots placed on extension for expertising MUST be submitted by Harmers International, Inc. Submission by the purchaser will nullify any extension request. Notify us of lot number and expert.



83

- 83 □ ⊕ 10¢ gray violet, Bottom Right Plate Block of Four with partial arrow plus 2 SE stamps at right, l.h. on top centre stamp only, quite well centred and deep color, very fine(290). \$2,950

1898 TRANS MISSISSIPPI ISSUE



84

- 84 □ □ ⊕ 1¢ green & black, Bottom Plate Block of Eight with Imprint and 2 Plate Numbers, never hinged, deep color and well centred, very fine(294). \$555



85

- 85 □ □ ⊕ 2¢ carmine & black, Top Plate Block of Six, never hinged, bright colours and exceptionally well centred, extremely fine (295). \$475



86

- 86 q ⊕ 4¢ deep red brown & black, Bottom Plate Block of Ten, l.h., wonderful colours and exceptional centering, very fine(296). \$4,250



87

- 87 q ⊕ 5¢ ultramarine & black, Bottom Plate Block of Six, very lightly hinged, fresh colours and well centred, very fine(297). \$2,250

88



- 88 qq ⊕ 8¢ brown violet & black, Bottom Right Corner Block of Four with PlateNumber and "8c", never hinged, deep color and exceptional centering, extremely fine(298). \$920



90



91

89

- 89 qq ⊕ **10¢ yellow brown & black, Top Right Corner Sheet Margin Block of Six with Plate Number and Part Imprint, stamps n.h. (one hinge on ungummed selvage), exceptional centering and colours, very fine..(299).** \$1,800+
- 90 q **1903 \$1 black, very lightly hinged, giving appearance of never hinged, extremely fine. FoundationCert. (2015).**(311). \$600
- 91 q **1903 \$1 black, l.h. airbrushed, fine**(311). \$600

Cleaning your collection? Harmers International can help.



- * Auction
- * Private Treaty
- * Purchase
- * Donation
- * Estate Management
- * Ebay and other on-line sites

eMail : info@HarmersInternational call or fax



92

92 q ⊕ 1¢ green, Bottom Left Plate Block of Eight, l.h., well centered, very fine(323). \$400



93

93 q q ⊕ 2¢ carmine, Tall Top Right Corner Plate Block of Eight, never hinged, fine to very fine((324). \$680



94

94 q ⊕ 3¢ violet, Bottom Right Corner Plate Block of Eight, hinged barely in bottom margin, stamps n.h., deep color, well centred brilliant color, very fine(325). \$1,400 as singles



- 95 qq ⊕ **5¢ dark blue, Bottom Plate Block of Four**, never hinged, deep color and well centred, very fine(326). \$1,150
- 96 qq /
qq ⊕ **10¢ red-brown, Bottom Right Corner Block of Four with Plate Number**, 2 n.h. and 2 l.h., deep color, well centred, fine to very fine (327). \$880

1907 JAMESTOWN



97

- 97 qq ⊕ **1¢ green, Top Right Corner Plate Block of Eight**, never hinged, deep fresh color and gum, fine to very fine(328). \$945



98

- 98 qq ⊕ **2¢ carmine, Block of Six With Plate Number and Imprint**, stamps n.h., fresh color, fine (329). \$420+



99



100 Ex

- 99 **5¢, blue, Top Margin Block of Six with Part Imprint and Plate Number**, barely hinged in selvage, stamps n.h., mostly very fine (330). \$1,710
- 100 **1909, 2¢ red Top Plate Blocks of Six, perforate and Imperforate, Lincoln, Alaska-Yukon, Hudson-Fulton** all l.h. except 367 n.h., very fine (See our Website for photos).....(367,368, 370-73). \$1,395

Wondering what your collection is worth?



We can help
No cost No obligation consultations.



101	q	1909, 3¢ deep violet, bluish paper, o.g., well centred, very fine. Foundation Cert .(2015).(359).	\$1,800
102	q	6¢ red orange, bluish paper, o.g., almost very fine(362).	\$1,250
103	q	10¢ yellow, bluish paper, n.h. but for corner gum disturbance, beautifully centred, very fine(364).	\$1,600
104	q	13¢ blue green, bluish paper, o.g., well centred, very fine. Foundation Cert (1973)..... (365).	\$2,600
105	q	15¢ pale ultramarine, bluish paper, o.g., exceptional centring, very fine..... (366).	\$1,250
106	q ⊕	Lincoln 2¢, bluish paper, Block of Six with Plate Number and Part Imprint, never hinged, one tiny inclusion, extremely fine(369).	\$1,920+

1913 & 1915 PAN PACIFIC ISSUE
BLOCKS AND PLATE BLOCKS



107

107 q q ⊕ 1¢ green, perf 12, Left Plate Block of Six, never hinged, extremely fine(397). \$450



108Ex



109

108 q q ⊕ 2¢ carmine perf 12 and 5¢ blue perf 12, Blocks of Four with PlateNumbers, never hinged, very fine(398,399). \$440

109 q ⊕ 10¢, orange yellow, perf 12, Left Plate Block of Six, barely hinged on selvage, exceedingly well centered and fresh color, very fine(400). \$2,350

Please Register to Bid

Bidder Registration forms are available on our web site, www.harmersinternational.com or thought you on-line bidding platform.



110 qq ⊕ **1¢, green perf 10, Top Plate Block of Six, never hinged, almost perfectly centered and bright color, bend, very fine**(401). \$650



110

111 qq ⊕ **2¢ carmine, perf 10, Top Plate Block of Six, never hinged, excellent centering, gum skips and small handstamp, very fine** (402). \$3,250



112

112 qq **2¢, perf 10 incredible deep carmine, n.h., very fine. P.S.E. Cert (2004).**(402) \$170



113

113 q **10¢ orange, perf 10, very l.h., fine**(404). \$700



114

114 q **10¢ orange perf 10, very l.h., extremely fine. Foundation Cert. (1989)**.....(404). \$700



115

115 qq **1912, 50¢ violet, D.L. watermark, o.g., very fine**(422). \$225



116



119



117



120



121



122



118

116	q ⊕	5¢ carmine Double Error in Block of Twelve, disturbed o.g., well centered, very fine(467).	\$1,800
117	q	1916, \$1 violet black, l.h, almost very fine..... (478).	\$625
118	✉	U.S. Private Vending Perforations: 1916 2¢ carmine EKU:Shermack Type 3, deep perfs at right, bare impressions at left, fine tied by New York OCT 17 1916 duplex in United Electric Light & Power Co. local envelope. Earliest known usage by two months.(482 var).Est. Cash Value	\$100 - 150
119	q ⊕	5¢ rose Double Error in Block of Twelve, o.g., well centred, gum crease not affecting errors, slight thin affecting errors, fine(505).	\$1,300
120	q q	1917, 2¢ carmine, never hinged, almost very fine(519).	\$850
121	q	1918: \$2 orange red & black, l.h., wonderful centering faint wrinkle, extremely fine..... (523).	\$525
122	q	1921, 1¢ green, rotary coil waste, perf 11, o.g., one blind perf, very fine(545).	\$170



123

123 qq ⊕ **1918, 6¢ orange Top Plate Block of Six**, never hinged, very fine..... (C1). \$1,000



124 Ex.



125 Ex.

124 qq /
qq ⊕ **1918, First Issue, 6¢-24¢ complete, Group of 24 stamps in Blocks of Four**, comprising 6c 3 n.h. blocks, 16c 1 part o.g. (thin) block, 24c 2 blocks n.h. except one stamp l.h. fine to very fine..... (C1-C3). \$2,600

125 qq ⊕ **1923, Second Issue complete plus extra 16¢ in Blocks of Four**, never hinged, fine to very fine(C4-C6). \$1,760

“Take time to deliberate; but when the time for action arrives, stop thinking and go in.”
.....Andrew Jackson



Harmers International Auctions move FAST.....
Bid quickly and decisively to avoid disappointment.



126 q q / Complete Set of Three Blocks of Four, each block 2 n.h., 2 l.h., fine to very fine (C13-C15).
q ⊕

\$6,110



127

127 q Set Complete, traces of o.g., \$1.30 thin, fine to very fine (C13-C15).

\$1,155



128

128 q Set Complete, 65c l.h., \$1.30 & \$2.60 regummed, very fine appearance(C13-C15).

\$1,155



129

129 O Complete Set 65¢, \$1.30 and \$2.60, used, 65¢ crease, fine to very fine(C13-C15). \$1,140



130



131

130 ☒ Complete Set of Three, tied on three Registered First Day Covers, each by 2-ring ovals, bearing on reverse 2 violet WASHINGTON DC 19 APR 1930 REG. c.d.s. strikes and Newark N.J. receiver (C13-C15). \$2,900

131 ☒ Complete Set on three Covers, 65c, on Zeppelin PPC to Germany, \$1.30 APR24 on US 1c post card to Germany, \$2.60 envelope to the United States, fine to very fine(C13-C15). \$1,200



132 Ex.



133 Ex.

132 *O/ ☒ 1933, 50¢ "Chicago" Zeppelin TWO BLOCKS OF FOUR one on cover one off, one n.h. fine (\$360), other tied on round trip steamer / flown cover New York OCT 4 1933 c.d.s. duplex tying block (\$275 off cover)(C18). \$635

133 ☒ 1933, 50¢ "Chicago" Zeppelin, Group of 4 covers, 3 Miami - Chicago - Newark Field (Oct 2) all to Newark plus block of 4 NY Oct 2 flown FDC to Newark. Nice group to the same addressee(C18). \$635



134



136



135

134	q q	1910, 10¢ deep claret, n.h., extremely fine(J49).	\$280
135	q	1912, 50¢ deep claret, o.g., almost very fine(J50).	\$1,100
136	q	1914, 50¢ carmine lake, deep color, lightly hinged “light gum toning at left”, which we cannot see, very fine for this extremely rare stamp. Foundation Cert (2015).(J58).	\$11,500

OFFICIALS



137



138



139



140

137	q	Agriculture Dept., 1873, 30¢ yellow, o.g. hinge remnants, fresh bright color, fine.....(O9).	\$550
138	q	State Dept., 1873, \$10 green & black, large part o.g., fresh colours, perforations clear all around, almost very fine. Foundation Cert (2015).(O70).	\$4,500
139	q	State Dept., 1873, \$20 green & black, disturbed o.g., perforations clear all around, tone spot at right, fresh colours, almost very fine(O71).	\$5,000
140	q	Agriculture Dept., 1879, 1¢ yellow, o.g. “large gum covered filled thin”, brilliant color. The rarest of Official stamps, fine. Foundation Cert. (2015).(O94).	\$6,000



141



142



143



144

- | | | | |
|-----|---|--|---------|
| 141 | q | 1875 Special Printing \$24 dark gray violet, disturbed part o.g., well centred, “tiny thin spot”, fine. Foundation Cert (2015)..... (PR29). | \$4,750 |
| 142 | q | 1875 Special Printing \$48 red brown, large part o.g, intense colour, very fine. Foundation Cert. (2015).(PR31). | \$7,000 |
| 143 | q | 1875 Special Printing \$60 violet, unused, well centred, “reperforated at bottom” otherwise sound and very fine appearance. Foundation Cert. (2015)..... (PR32). | \$2,600 |
| 144 | q | 1875 Special Printing 12¢ pink, lightly hinged, “small horizontal crease” fresh bright color, almost very fine. Foundation Cert. (2015).(PR95). | \$2,600 |

UNITED STATES POSSESSIONS



145



146

- | | | | |
|-----|---|--|---------|
| 145 | q | Canal Zone: 1914, 10¢ rose carmine, barely, l.h., extremely fine(J3). | \$1,000 |
| 146 | q | Cuba: 1899, 10c on 10¢ brown, type II, o.g. rare and popular stamp, o.g., very fine, Ex C. Jennings. Foundation Cert. (1964).(226A). | \$6,000 |

“The President of today is just the postage stamp of tomorrow”

Gracie Allen

COLLECTIONS AND VARIOUS

147	q / O	<p>19th and 20th Century Collection:, An extensive collection in two National Albums, many hundred of virtually all unused stamps to 1970, early values to 90c, Columbians to \$5.00, Bureaus to \$5.00, Trans-Miss to \$2.00 (less \$1.00), W-F's to \$1.00, Air Post and Special Delivery complete, Officials almost complete, Newspapers well filled, obviously, there are some fakes and "improved" stamps in the usual areas, plus faults on the very big pieces. Worth the time for a complete inspection. ...Est. Cash Value</p>	<p>\$25,000 - 30,000</p>
148	q	<p>United States: 19th and 20th Collection, A devine collection of a few hundred, primarily lightlyhi-nge d stamps in 3 green Elbe padded Royal Albums with gilt edged quadrille pages. Wonderful- condition and centreing throughout especially on the earlies and some jumbo stamps in the later issues; Columbians and Trans Mississipp to 50¢, Bureaus, Commemoratives, Zepplins complete. Just adelight to inspect. Also a few Harmer and Siegel auction lot sheets.Est. Cash Value</p> <p style="color: blue; text-align: center;"><i>Many of the stamps with small "Paladin" horsehead owner's handstamp.</i></p>	<p>\$3,500 - 4,500</p>
149	q / O+	<p>20th Century extensive offering of collections in 6 albums plus pages, comprising singles album; Back of the Book album with Revenues (with franked cheques), Officials, Dues, etc.; used block album strong in Prexy's; White Ace album with White Plains Sheet; Album of Bank Note cancels, Plate Block Album 1919 on including Prexy's complete, pages with unused block of Nebraska, W-P sheet, C1-6 used blocks of 4, great for retail or ebay.Est. Cash Value</p>	<p>\$2,000 - 2,500</p>
150	q	<p>Primarily 20th Century Selection of almost 300 stamps including blocks, in one investment safety deposit stock book, and Air mails in small stockbook; including 5earlies, then Pan Ams, Trans Miss., Commemoratives, double 5c error block, #573, 634A corner plate No., Kansas-Nebraska, Parks, C1-C10a some Air Plates, C18 block of 4 and 3 singles, 1 cover, Columbian tickets, 085(2) n.h.v.f. with certificates. Very useful group and generally very fine.Est. Cash Value</p>	<p>\$1,000 - 1,250</p>
151	O	<p>Primarily 19th Century assemblage of 109 useful stamps, on 11 APS numbered approval cards, starting with #63, values to 90¢, grills, Banknotes to 90c x 4, Bureaus to \$1.00 and \$2.00 (#312) and \$5.00 (#480) many decent, but faults to be expected.Est. Cash Value</p>	<p>\$750 - 1,000</p>
152	q q / q	<p>20th Century : An old investment type group of 94, in a small stock book, including Trans-Mississippi to 10c, Pan American, Louisiana, Pan Pacific Perf 12 some Commems. Prexy \$2, \$4, private perf. strip; Airs C1-6, C18, some others, n.h. to o.g., many useful, Catalogue about \$3,300, also Hawaii 55 unused and used (Catalogue \$1,100+).Est. Cash Value</p>	<p>\$500 - 700</p>
153	q q +	<p>1940 Famous American Set of 35 in Full Sheets of 70, n.h., fine to very fine. Catalogue value not included Plate Blocks (859-93).</p>	<p>\$2,317</p>
154	q	<p>Hunting Permit Stamps: 1934-1998 complete, n.h. maybe 1 or 2 l.h., mounted on White Ace specialty pages. Nice (RW1-65).Est. Cash Value</p>	<p>\$750 - 1,000</p>
155	q / O	<p>U.S. Possessions 1899 to 1904:, comprising Cuba #221-26, J1-4, E1, Guam #1-13 (less #9), E1; Philippine #212-240, J1-7, E1; Puerto Rico #210-216, J1-3 (x2); plus Canal Zone 1904-33, #4-8, 70-81, 84-90, 96-104. 115, 116, 118, 119, J1-2, 12-20, l.h. to few unused, generally fine.</p>	<p>\$5,800</p>

POSTAL HISTORY

156	☒	<p>19th Century: "The West" group of 21 covers, mostly in Nutmeg and Stampazine lot sheets, good selection of towns including Michigan Bluffs, Volcano, Ogden City U.T., French Gulch, Terminus Mont., Winnemucca Nevada, including some express covers and documents also 26 bank cheques and a small catalogue Wells Fargo & Co. exhibition at the Columbian Exposition..... Est. Cash Value</p>	<p>\$300 - 350</p>
-----	---	---	--------------------

Very Attractive.

- 157 **19th and 20th Century a remainder of many hundred covers and postcards**, including 18 on auction lot sheets of Nutmeg and Stampazine, some Naval Exhibition cards interesting First Day Cover's from the 1930's plus more. The lot sheets are worthy.Est. Cash Value \$300 - 400
- 158 **EKU Potpourie:**, A most interesting and possibly profitable selection of 32 covers and cards identified by a prominent NYC dealer as possible earliest know usages (or not) that probably can only be certified by removing the stamps. 13 have been submitted to the P.F. returned with that report. Use your knowledge or luck to find out. Mostly Washington Franklin issues.Est. Cash Value \$150 - 250
- 159 **World War II APO Collection; over 2000 covers, neatly mounted in 12 documented albums organized numerically. Numbers 1-1011 relatively complete Numbers 1047 to 18878 randomly, several rare including 447 from Goeppingen, Ger, etc., also 2 albums of V-mail plus 3 albums of foreign covers, maps, ration books etc. plus 1 album of Marine Post Offices, foreign and others. Just wonderful with duplicates to different destinations.Est. Cash Value \$3,000 - 4,000**

End of United States

AUTOGRAPHS

160 **United States: Late 1700's to about 1900 - Probably thousands in 3 cartons, plus envelopes. Primarily the Wars, some Revolutionary, 1812, Indian, Civil, Mexican, Spanish; Generals, soldiers, important players. Some fairly well organized incredible documentation (most of the work is done), also fabulous highlights. Here, in no particular order:**

Annie Oakley, period printed signature studio card, Samuel Clemens (Mark Twain pencil on card), Chief John Ross promissory note, General Arthur St. Clair (Revolutionary War) summons, Harriet Beecher Stowe on card framed with print, John Marshal cut from letter (Certificate), General Philip H. Sheridan 1877 document with 5 other Generals, 1765 Rhode Island Slave trade letter, Marcus Reno (Little Big Horn) on cut out, Henry "Heck" Thomas lawman prisoner certification, William Vernon (1778) legal folio refering to the "Ranger" John Paul Jones ship, Emmett Dalton (The Gang) cut out, James Madison and wife (parents of the 4th President on 1754 land deed, Benj Harrison - William McKinley - A. Johnson cut outs, Theodore and Edith Roosevelt group, J.N. Bonaparte U.S. Scout Texas - Crimea, Knighted on letter, Henry A. Dupont (1888), Fredrick Cook (1930) Hotel Stationery, Jay Gould (1881) 2 stock transfers, "Cato" (slave) 4 days of work receipt (1766).

.....Est. Cash Value \$10,000 - 12,500

161 **World War II;** a selection of 43 autographs, photos, etc. of the war. Highlights including "Montgomery of Alamein", the "Enola Gay" participants, "Arizona" survivors, Medal of Honor winners, General "Lightning Joe, Indianapolis survivors, Japanese Relocation, Ace's, Generals, etc. plus study material. Wonderful. ..

.....Est. Cash Value \$350 - 500

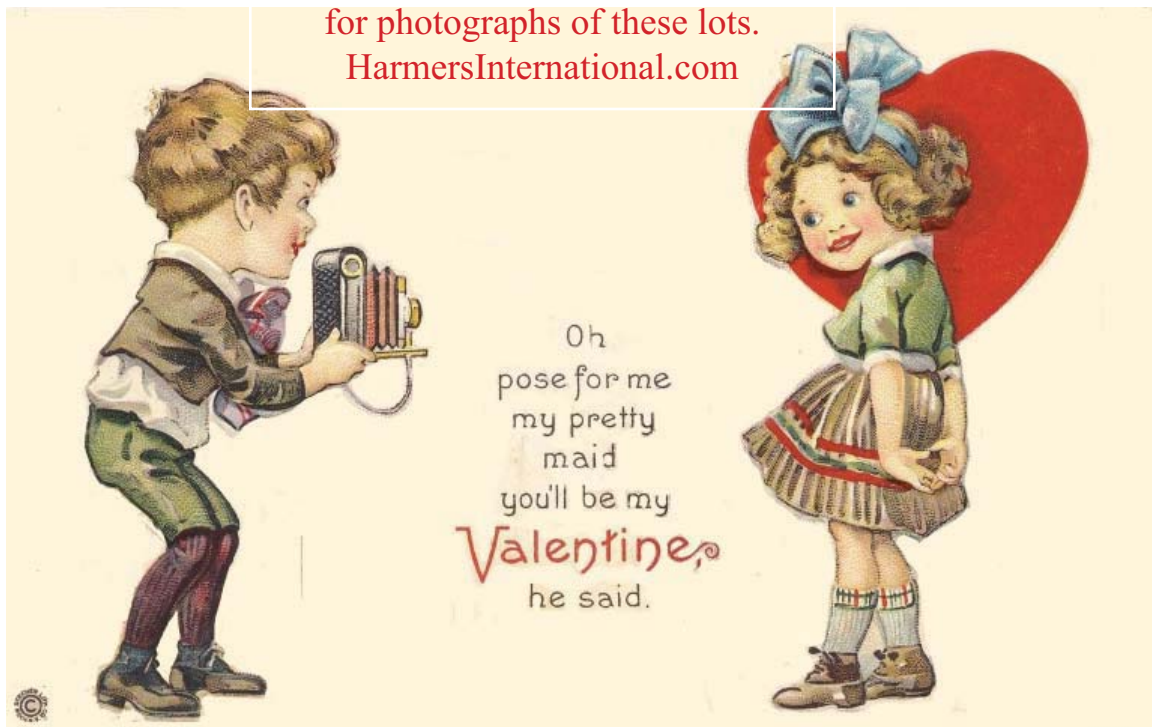
162 **Pop culture, sports heros, entertainers probably about one hundred, including Hoffa on metered postage strip, Neil Armstrong on card, 29 signed "Baseball Hall of Fame" cards including Berra, Greenberg, Dimaggio, Campanella, Negro Leagues Monte Irvin, Satchell Page "Cool Papa" Bell, etc. Tyrus Cobb on cheque, Rod Serling card, Simon Wiesenthal etc.**

.....Est. Cash Value \$1,500 - 2,000

163 **Europe (few British) primarily classic,** about 35 autographs, mostly on letters, 4 documents back to 1595, leaves from books showing antique print, better autographs including 1833 Louis Phillippe (King) on lovely summons, 1920 Louis Albert Phillippe (Count of Paris) on cute note sheet (stains) and 1920 Phillippe (son of Duke d'Orleans) on 2 page note in his hand. Worthy of further research.

..... Est. Cash Value \$500 - 1,000

Please see our website
for photographs of these lots.
HarmersInternational.com



BRITISH NORTH AMERICA

NEW BRUNSWICK

3 Pence Red



164



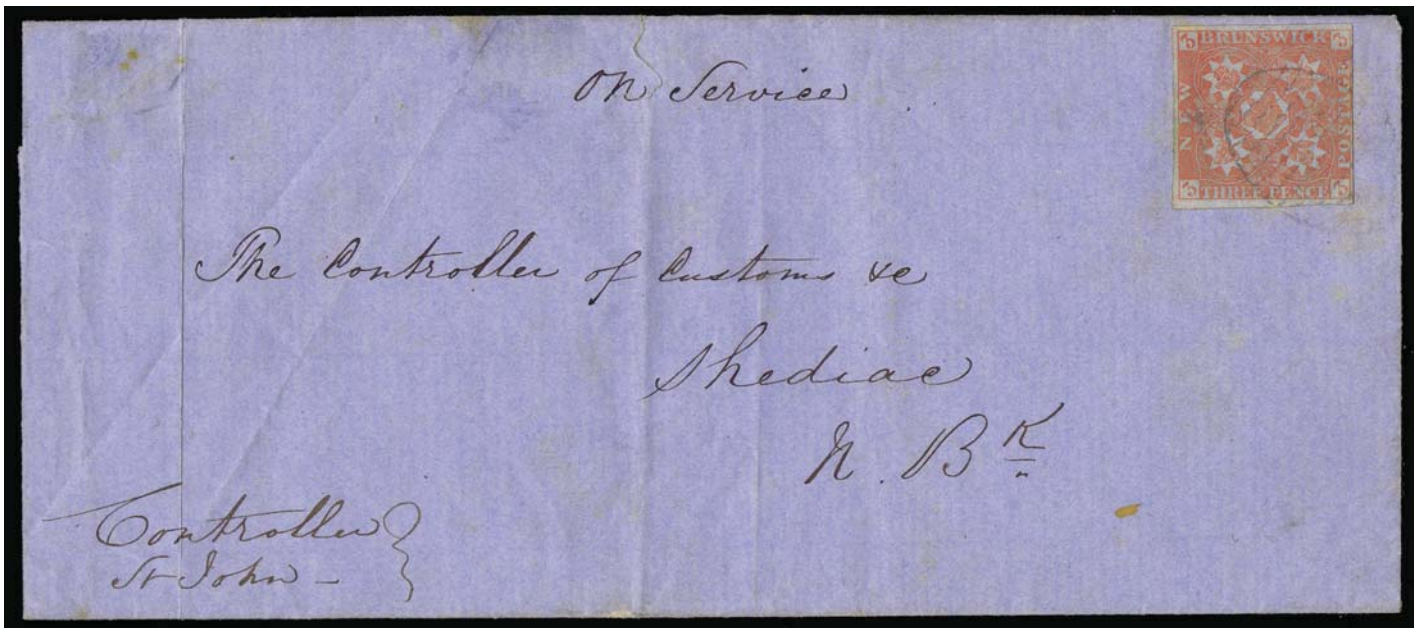
165





166

- | | | | |
|-----|---|---|-------|
| 164 | △ | <p>1851, 3d red, good margins all round, tied by neat oval grid cancel on piece, very fine. SG 1; £425 (\$630). ...
 (1).</p> | \$575 |
| 165 | ☒ | <p>1851, 3d red, Sheet Margin Copy, others good margins all around, extremely fine, tied by "13" in grid (Fredericton) on small envelope bearing on reverse FREDERICTON JU 28 1856 c.d.s. and St. John receiver JU 29 1856(1).</p> | \$950 |
| 166 | ☒ | <p>1851, 3d red, large to clear margins all around, very fine, tied by "26" in grid (Shediac) on folded letter sheet, on reverse, SHEDIAC JA 9 c.d.s. origin, ST JOHN JA 10 1855 transit and FREDERICTON JA14 receiver(1)</p> | \$950 |

167



168

- 167  **3d red**, margins all around, very fine, tied by "21" in grid (Newcastle) on folded letter sheet bearing on reverse NEWCASTLE SE 13 1858 c.d.s., 2 transits and HALIFAX SE 15 oval receiver(1). \$950
- 168  **3d red**, good margins all around, very fine, tied by probably "1" in grid on folded letter (some creases) bearing manuscript "On Service", on reverse ST JOHN DE 23 1858 c.d.s. and SHEDIAC receiver(1). \$950

COVER CONDITION

Minor faults including, but not limited to, file folds not affecting stamps, small tears and some backflap damage have not been noted in the descriptions of this catalogue.

169

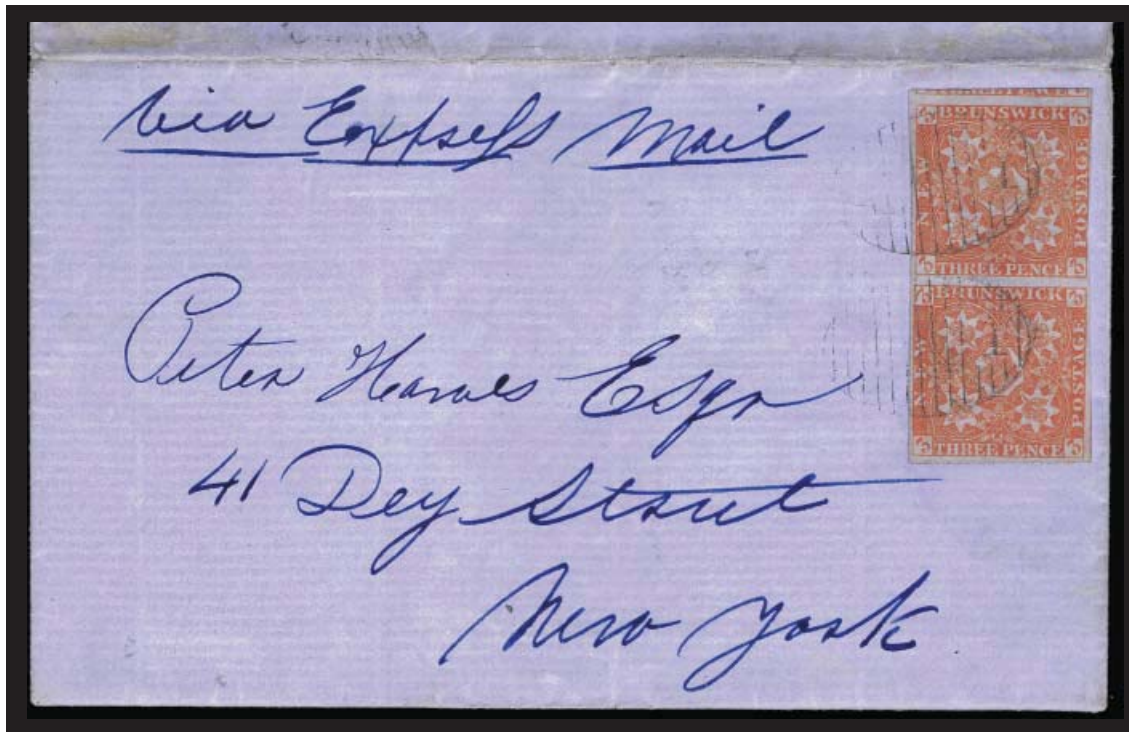


169 ☒ **3d red, Two Copies**, one margins all around, the other is cut in, filing crease, both tied by void in grids on folded letter bearing on reverse HARVEY OC 10 1851 c.d.s., SALISBURY transit and ST JOHN OC 13 1851 receiver. (1).....Est. Cash Value

\$250 - 300

This cover is the oldest multiple franking for internal use and the second oldest multiple franking over all. Unlisted in Arfken-Firby census.

170



170 ☒ **Used to New York: 1851, 3d red, PAIR**, margins all around but just touched one spot tied by "1" in grids on folded letter bearing manuscript "Via Express Mail", on reverse ST JOHN AU 14 1854 origin. (1).

Est. Cash Value \$400 - 500

The letter refers to the cholera epidemic taking place in St. John. The only express cover franked solely with 3p stamps.



171

171 ☒ **1851, 3d red PAIR and SINGLE**, latter margins all around, former mostly margins, filing crease, all tied by void in grids on folded letter sheet bearing blue CATHAM JY 11 1852 transit c.d.s., and manuscript "Registered No. 2 Money Letter", on reverse SACKVILLE or ST JOHN JY 10 1852 origin and RICHIBUCTO JY 11 1852 transit. Ex. W.H. Brouse, Dale- Lichtenstein Lot 296, Carr, Saint. (1).....Est. Cash Value

\$500 - 750

There are only 3 covers bearing three 3p stamps. There is only one other registered and one triple rate. This is the earliest. A necessary cover for rate study.



172


172 ☒ **1851, 3d red PAIR and SINGLE**., varying margins and clipped corner, all tied by blue void in grid on folded letter date lined "HINRAUS (?) 15 JUN 1853", on reverse, weak origin c.d.s. and partial blue ST. JOHN 1853 c.d.s. receiver. Unique cover. (1).....Est. Cash Value

\$300 - 400

This is the only know example of a triple rate letter bearing solely the 3p value and is not in the Arfken/ Firby census.



173

- 173  Used from United States: 1851 6d olive yellow, Two Stamps, left copy margins all around, right copy margins two sides, tied by small bar grid cancels on folded letter sheet (bottom flap missing) bearing incredibly rare U.S. EXPRESS MAIL BOSTON JUN 29 c.d.s., on reverse ST. JOHN NEW BRUNSWICK JUN 30 1857 c.d.s. receiver. Ex. Dale Lichtenstein, Saint. B.P.A. Cert. (1998). (2). \$2,500 -
.....Est. Cash Value 3,000

This double-rate cover, mailed from the U.S. was sent via Favours Express on their ship the Adelaide, which proceeded to St. John. On board, the Express marking was applied, but not on the stamps, as was normal for New Brunswick to U.S. covers. It is surmised, the stamps were additionally applied on-board to pay the rate.


An historical piece of British North American Postal History.




174



175

- 174  **Used to New York: 1851, 6d olive yellow**, margins all around, close at right, showing portion of adjacent stamp at top, very fine tied by "1" in grid on folded letter bearing manuscript "per Steamboat Mail", on reverse ST JOHN JY 18 1857 origin. SG 4; £1,600 (\$2,380).(2). \$1,750

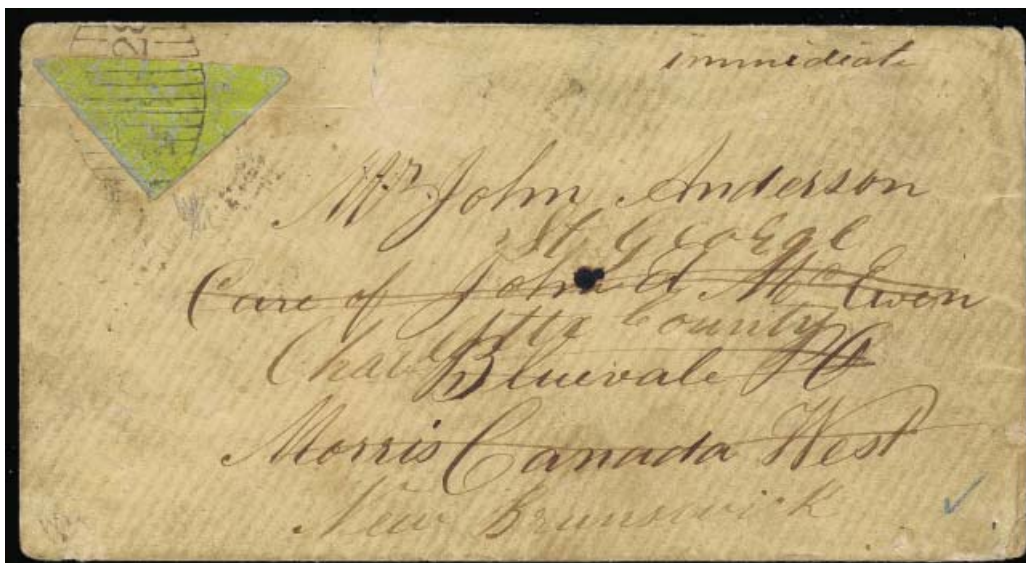
The transit only took 4 days. Unlisted in Arfken/Firby census.

- 175  **Used to New York: 1851, 6d olive yellow**, margins all around but just touching along top, fine, tied by probable "1" in grid and red PAID on folded letter bearing manuscript red "10" and large blue NEW BRUNSWICK X c.d.s. transit, on reverse probably ST JOHN FE 24 1852 origin. Very tidy and colourful cover. Not listed in Arken/Firby census., One of the first 6p covers to the United States. SG 4; £1,600 (\$2,380).(2). \$1,750



176

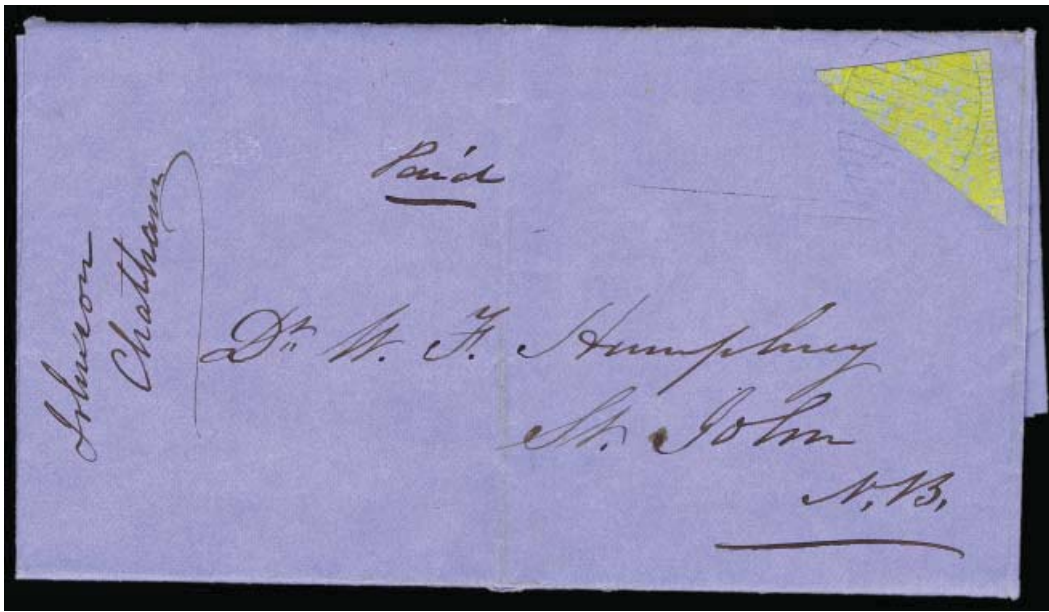
- 176 **Used to Boston: 1851, 6d olive yellow, margins all around, barely touched at bottom, just tied by void grid on neat envelope, top back flap short, bearing blue NEW BRUNSWICK circle, red PAID 10 CENTS, on reverse blue ST. GEORGES FE 2 1853 origin. Probably by land route. Ex Argenti (lot 103). SG 4; £1,600 (\$2,380).(2).** \$1,750




177

- 177 **1851, 6d olive yellow, Bisected, tied by "28" in grid (St. George) April 1860 re-addressed envelope originating in St. George to Bluevale C.W. and return, on reverse there are 9 c.d.s. strikes. Quite a trip. The stamp has a split crease that is not mentioned in the certificate. Ex Foxbridge P.63 (John Dupont), Argenti, Cartier. Holcombe Cert.(1991). SG 4a; £3,000 (\$4,470).(2b).** \$3,500

WISHING TO CONSIGN?
The best number in Philately800-223-6076




178

- 178  **1851, 6d olive yellow, bisected**, barely one margin, tied by Blue "8" (Chatham) in grid on folded letter bearing manuscript "Paid", on reverse blue CHATHAM FE 8 1859 c.d.s. and ST JOHN FE 11 1859 receiver. Unlisted in Arfken/Firby census. Ex Leslie Ray Esq. B.P.A. (1994) and Royal (1934) Certs. SG 4a; £3,000 (\$4,470)..... (2b). \$3,500



179

- 179  **Used to Newfoundland: 1860, 10¢ vermillion, Diagonal Bisect**, tied by grid on folded letter sheet bearing "4" handstamp and manuscript "Via Halifax", on reverse red DOUGLASTOWN JUL 2 1860 origin, Chatham and Halifax transits and ST. JOHN'S JL 16 1860 receiver. B.P.A. Cert. (1996).(9a). \$800



- 180 q 1857, 8d scarlet vermilion, part o.g., superb. RPS Cert. (1961). SG 8; £375 (\$560).(8). \$450
- 181 O 1857, 1s scarlet vermilion, close but mostly clear margins all around, deep intense color, small tear, fine. Ex. J. deMercado. Greene Cert. (2010). SG 9; £11,000 (\$16,390).(9). \$10,000
- 182 O 1860, 1s orange Papermaker's Watermark "STACEY WISE 1858", showing second "E", lightly cancelled, mostly margins, touched at places, "small tear" still a fine copy for such a scarce stamp. SG 15; £11,000 for normal (\$16,390)..... (15 var). \$12,000 for normal
- 183 q 1857 to 1932, Select Group of 15 stamps on approval cards, n.h. to unused, fine to very fine. One Foundation Cert. (5,11A,12A, 15A, 17-19,23,43,C6-8,C12,C18).Est. Cash Value \$400 - 500
 (Visit our websire for photos of Lot 183)

John C. Chapin of Vermont was a well established collector and exhibitor for over 40 years. If there was anything his collections were noted for, it was quality, quality, and quality both in inexpensive stamps and the great rarities. He was a client of the Harmer family for most of his life The following 21 lots are just a small study of his endeavors



- 184 1857, 1d brown violet, Block of Four, probable bottom sheet margin, other margins good, lightly hinged, extremely fine. Ex John Chapin. Sismondo Cert. (2016). SG 1; £640 (\$950).(1). \$500
- 185 qq 1860, 3d green, Sheet Margin Block of Six, good to large margins all around, never hinged, extremely fine. Ex. John Chapin. SG 11; £660 as hinged (\$980). (11A). \$1,020



186	q q/ q ⊕	1860, 3d green, Triangular Block of Four , good margins all around, 1 stamp never hinged, 3 stamps lightly hinged, extremely fine. Ex John Chapin. SG 11; £440 as hinged (\$660). (11A).	\$425
187	q q/ q ⊕	1860, 5d violet brown, Block of Four , possible sheet margin at bottom, 2 stamps never hinged, 2 stamps lightly hinged, other margins good to large, extremely fine. Ex. John Chapin. Sismondo Cert (2016). SG 12A. Unitrade 12A. (12A).	\$460
188	q q/ q ⊕	5d violet brown Block of Four , large to good margins all around, 2 stamps never hinged, 2 stamps lightly hinged, extremely fine. Ex. John Chapin. Sismondo Cert. (2016). SG unl. Unitrade 12A.....(12A).	\$460
189	q ⊕	1860, 5d violet brown, Block of Four , large to good marins all around, lightly hinged, very fine. Ex. John Chapin. Sismondo Cert. (2016). Unitrade 12A.(12A).	\$340
190	q ⊕	1861, 2d rose, Block of Four , very lightly hinged, tiny marginal scissor cut at bottom, extremely fine. Ex John Chapin. SG 17.(17).	SG £1,200 (\$1,790)
191	q	1861, 2d rose, Pair , lightly hinged, generally enormous margins all around, superb. Ex John Chapin. SG 17; £600 (\$890).(17).	\$350



- 192 qq ⊕ **4d rose, Top Margin Block of Four**, good margins all around, never hinged, extremely fine. Ex John Chapin. SG 18; £200 as hinged (\$300). (18). \$300
- 193 q ⊕ **1861, 4d rose Marginal Pair, o.g., 1s rose Block of Four**, lightly hinged, very fine. Ex John Chapin. .SG 18,23; £300 (\$450)..... (18,23). \$245
- 194 qq/ ⊕ **1861, 5d reddish brown Bottom Sheet Margin Block of Six**, three stamps lightly hinged, lower three stamps never hinged, extremely fine. Ex. John Chapin. Sismondo Cert. (2016). SG 19a; £540 as hinged (\$800). (19). \$675
- 195 q ⊕ **1861, 5d reddish brown Block of Four**, probable sheet margin, others good, lightly hinged, very fine to extremely fine. Ex. John Chapin. Sismondo Cert. (2016). SG 19a; £360 (\$540)..... (19). \$300
- 196 q ⊕ **1861, 5d reddish brown Block of Four, probable sheet margin**, others good, lightly hinged, very fine to extremely fine. Ex. John Chapin. Sismondo Cert. (2016). SG 19a; £360 (\$540)..... (19). \$300



201



202



203



204

- | | | | |
|-----|-------|---|-------|
| 201 | q q ⊕ | 1861, 6d rose, Corner Sheet Margin Block of Four , other margins good to large, never hinged, superb. Ex. John Chapin. SG 20; £140 as hinged (\$210).....(20). | \$180 |
| 202 | q q ⊕ | 1861, 6½d rose, Block of Four , enormous to good margins all around, never hinged, extremely fine. Ex. John Chapin. SG 21; £400 as hinged (\$600). (21) | \$680 |
| 203 | q q ⊕ | 1861, 8d rose, Corner Sheet Margin Block of Four , other margins large to good, never hinged,superb. Ex. John Chapin. SG 22; £520 as hinged (\$780). (22). | \$680 |
| 204 | q q ⊕ | 1861, 1s rose, Corner Sheet Margin Block of Four , good margins other sides, never hinged, superb.Ex. John Chapin.(23). | \$340 |

"All science is either Physics or stamp collecting."

- Ernest Rutherford physicist and Noble Laureate

NOVA SCOTIA

1851 3 PENCE BLUE



205



206

- | | | | |
|-----|---|--|---------|
| 205 | q | 1851, 3d bright blue, unused, extremely fine. SG 3; £1,100 (\$1,640).(2). | \$1,750 |
| 206 | q | 1851, 3d dark blue, redistributed o.g., margins all around, reinforced crease only discernable in fluid, still fine (3). | \$2,250 |

COVERS



207

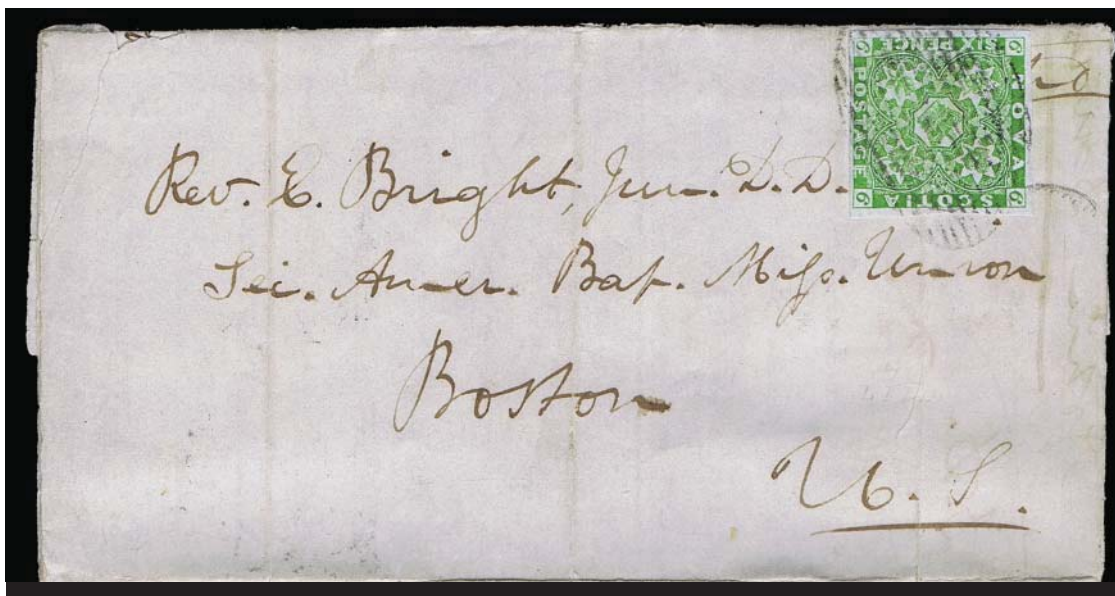
- | | | | |
|-----|---|---|---------|
| 207 | ☒ | Used to Scotland: 1851, 3d bright blue, bisected and 6p dark green, both with good margins and tied by oval grids on folded letter bearing, red PAID LIVERPOOL PACKET 3 AP 59 transit, on reverse, PICTOU MR 21 1859 c.d.s. (origin), HALIFAX transit and INVERNESS transits, and green INVER-GORDON AP 6 receiver. Ex Mackie. SG 3a,6; £2,500 (\$3,720)..... (2a,5). | \$3,750 |
|-----|---|---|---------|

The rare and attractive stamp presentation called the "Top Hat".



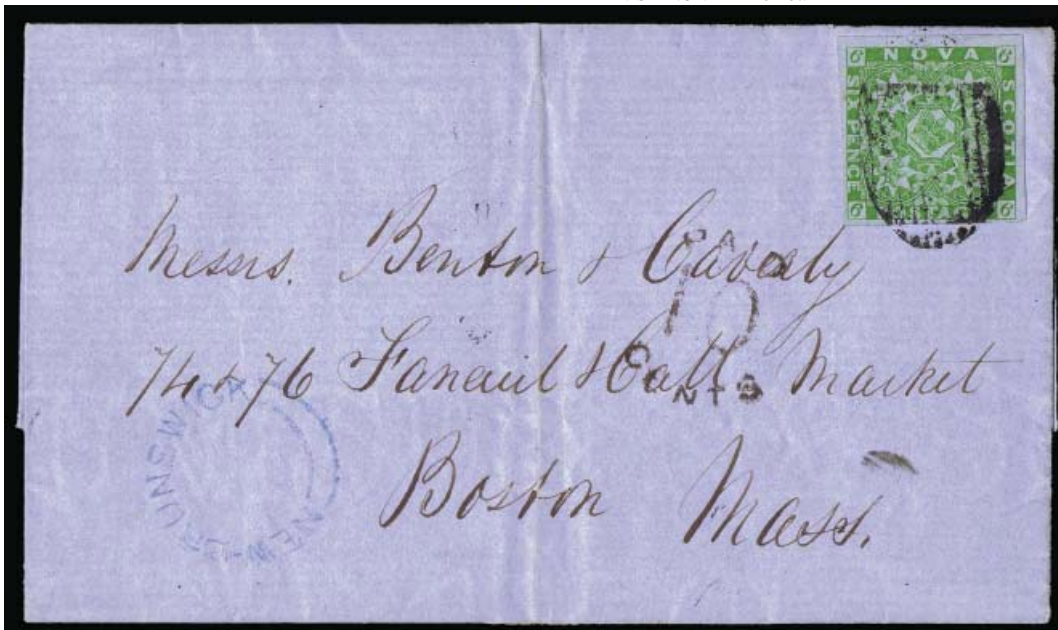
208

- 208 Used to Cape Breton: 1851, 6d yellow green, good margins all around, very fine, tied by light oval grid cancels on 1857 embossed corner card envelope of the Nova Scotia Electric Telegraph Company (less top back flap) bearing a manuscript "Paid: and "p mail" on reverse LOCKS - ISLAND (now Loke Port) AP 28 - Halifax AP 30 - MY 6 SYDNEY C.B. MY 7 BADDECK- MY 9 ST ANNS transits. Ex. Dale-Lichtenstein, F.R. Mayer, Saint. Greene Cert. (1983). SG 5; £2,200 (\$3,280)..... (4). \$1,600
- Addressed to Aspee Bay, the northern most point of Cape Breton. This cover took a most tortuous route.
Very few advertising covers exist*



209

- 209 Used to Boston: 1851, 6d yellow green, bright color, good to large margins all around (file fold barely affecting), tied by oval grid on folded letter, on reverse red YARMOUTH JU 27 1854 origin c.d.s. DIGBY and ST JOHN NEW BRUNSWICK JU 30 transits. SG 5; £2,200 (\$3,280) (4). \$1,600
- Third oldest date for a 6p paying this rate. Not listed in Arfken-Firby census.*



210

- 210 **Used to United States: 1851, 6d yellow green**, good to large margins all round (filing crease) tied by black grill on folded letter bearing blue NEW BRUNSWICK circle, on reverse red YARMOUTH c.d.s., Sydney transit and ST. JOHN NB BE 15 1855 transit, to Boston., Ex Col. Green (Sale 19 Lot 817). SG 5; £2,200 (\$3,280).(4). \$1,600



- 211 **1851, 6d yellow green and 3p dark blue**, both margins all around to touching one place, tied by oval grids on folded letter (missing one side back flap) date-lined "Economy NOV 27 1856" and bearing on reverse rare red LONDON DERRY NO 30 1856 c.d.s. and Dec 1 Truro receiver. Ex. Jarrett, Chaplin.SG 5,2. (4,3).....Est. Cash Value \$500 - 600

A very rare 3x rate usage, perhaps 4 covers with this franking, and was likely carried on the Intl. R.W.(Railway).



- 212 **Prince Edward Island: 1861, 6d yellow green**, usual perf. irregularities for the issue, o.g. (hinge remnant), still fine., fine. SG 4; £1,700 (\$2,530). (3). \$2,750

CANADA

1851 LAID PAPER

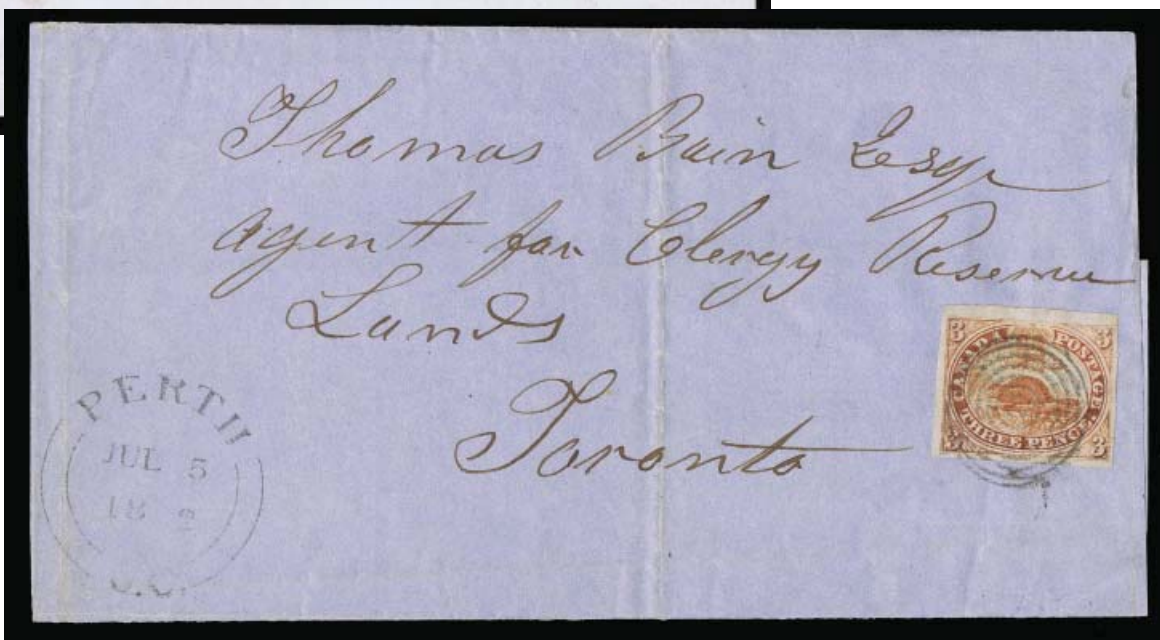


213



214

215



216

213 O **1851, Beaver, 3d red, laid paper**, lovely “socked on nose” 7-ring target cancel, probably bottom sheet margin others large to good, extremely fine. Greene cert. (2016).(1). \$1,000

A lovely stamp.

214 O **1851, 3d red, laid paper, 7 ring cancel**, good to large margins all around, thin, almost very fine. SG 1;£1,100 (\$1,640).(1). \$1,000

COVERS

215 ☒ **1851, Beaver, 3d red, laid paper**, good margins all around, very fine tied by rare Blue oval to folded letter sheet bearing red ST. ANDREWS U.C. in circle with manuscript “July 7th 1852” in centre, on reverse red Kingston c.d.s.(1). \$1,900

A very fine example of the laid paper being used in the wove period which were delivered in April 1852. The stamp is hinged on cover to verify paper used in wove period.

216 ☒ **1851, Beaver, 3d red, laid paper, Sheet Margin Copy**, with good to large margins other sides, extremely fine, tied by 7 ring cancel on folded letter sheet PERTH JUL 5 1852 c.d.s. on reverse ROCKVILLE transit and TORONTO JY 7 receiver.(1) \$1,900

Another used during the wove period. The stamp is hinged on cover to verify paper.



117

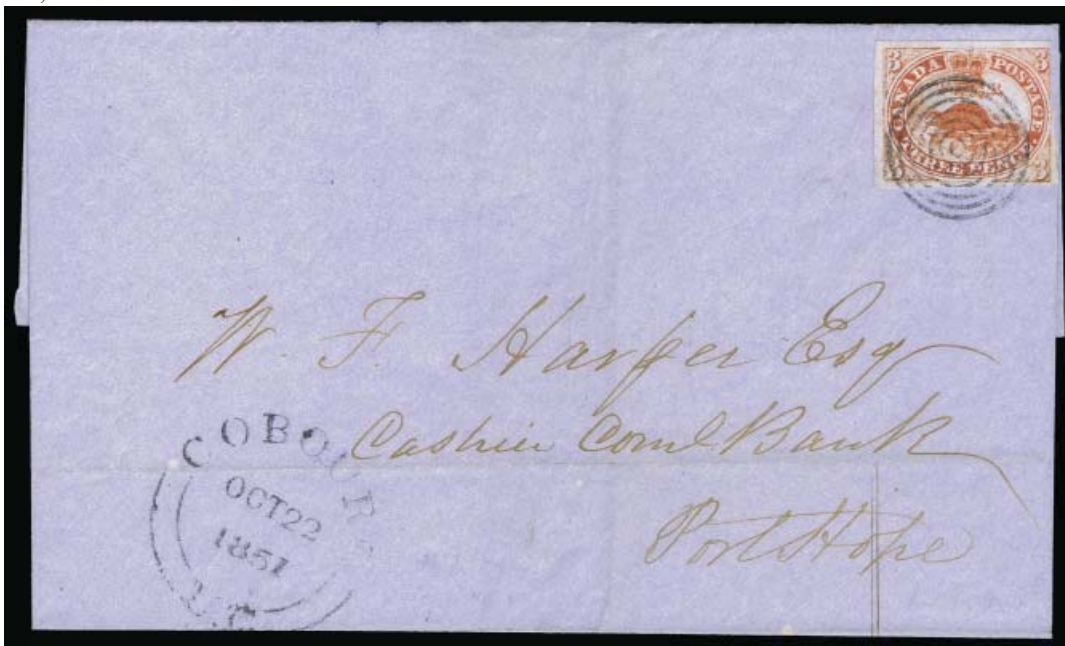
- 217 ☒ **1851, Beaver, 3d red, laid paper**, margins all around, very fine, tied by 7-ring cancel on neat folded letter sheet bearing distinctive BELLEVILLE JUL 30 1851 c.d.s, on reverse KINGSTON receiver. Fourth month of issue. SG 1; £2,200 (\$3,280).(1).

\$1,900



- 218 ☒ **851, Beaver, 3d red, laid paper**, margins all around, tied by crisp 7-ring cancel on envelope (missing top back flap), bearing red QUEBEC CITY AUG 5 1852 c.d.s. on reverse red COATICOOK receiver (N. Barnistown). Rare destination. The stamp is hinged in place to verify paper. Wove period.(1).

\$1,900



119

- 219 ☒ **1851, 3d red, laid paper**, margins all around except just touched frame-line at top left, fine, tied by 7-ring cancel on neat folded letter sheet bearing COBOUG OCT 22 1851 c.d.s., on reverse PORT HOPE receiver ..
(1). \$1,900

6 PENCE SLATE VIOLET



- 220 O **1851, 6d slate violet, laid paper**, ring cancel, good to enormous margins all around (probably a left sheet margin copy) corner crease in top left margin outside design, still very fine. SG 2; £1,300 (\$1,940). (2). \$1,750
- 221 O **1851, Prince Albert, 6d slate violet, laid paper**, “extra frame line at left variety” probable sheet margin at left others good to large, tiny bottom right corner crease in margin, still very fine Variety quite distinctive(2). \$1,750
- 222 PS **PLATE PROOF: 1851, 12d black, on India**, vertically overprinted “SPECIMEN” in red, very fine. CS\$2,500
3P.i Unitrade (\$2,120)

Want to know what your collection is worth?
 We offer a variety of Appraisal Services.
 Call us for details.



223

223



Used to New York: 1851, Prince Albert, 6d slate violet, laid paper, Two four margined copies (both with creases) one with sheet margin, cancelled by target cancels on blue folded letter bearing red ST. CATHERINES OCT 15 1852 c.d.s. and red two-line CANADA /PAID 10 Cts. re-rated with a manuscript "20", on reverse QUEENSTOWN OCT transit. (2).....Est. Cash Value
The C. Firby Census states there are only 16 covers known bearing a pair or 2 singles. We can only account for six. Some recorded are probably duplicate listings. Obviously a very rare franking.

\$1,000 - 1,250



224

224



Used to New York: 1851, Prince Albert, 6d slate violet, laid paper, rich color, full to large margins all around, very fine, tied by red MONTREAL NO 3 1851 c.d.s. on folded letter bearing red CANADA in arc and PAID. Greene cert. (1999). SG 2; £2,600 (\$3,870).(2).
Very attractive, from the famous Kennedy Correspondence and used in the first six months of issue.

\$3,100



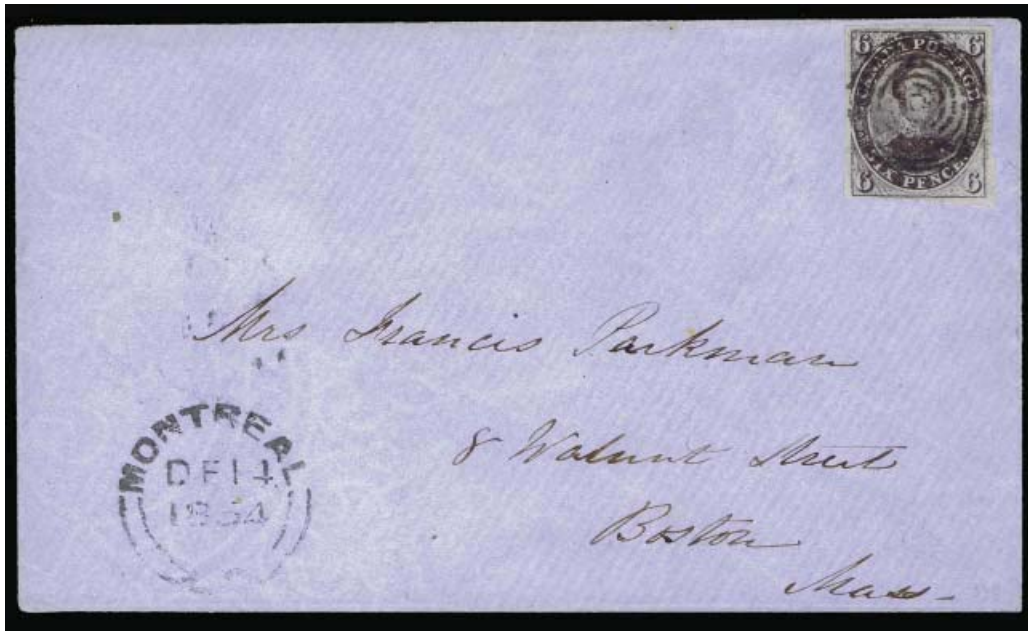
225

- 225 ☒ **1851, 6d slate violet, laid paper**, good to large margins all around, very fine, tied by target cancel on bank folded letter bearing red MONTREAL AP 8 1852 c.d.s. PAID and curved CANADA. SG 2; £2,600 (\$3,870).
(2). \$3,100



226

- 226 ☒ **Used to New York: 1851, Prince Albert, 6d slate violet, laid paper**, enormous margins all around, faint filing crease almost very fine, tied by ring cancel on folded letter bearing bright red MONTREAL SP 13 1851 c.d.s., red PAID and framed CANADA in arc.(2). \$3,100



227

227 Used to Boston: 1851, Prince Albert, 6d slate violet, laid paper, margins all around except frame-line just touched BL, cancelled by ring cancel on neat envelope bearing MONTREAL DE 14 1854 c.d.s.(2).

\$3,100



228

228 Used to New York: 1851, Prince Albert, 6d slate violet, laid paper, deep color, good margins all around except touched BR tied by ring-cancel on folded letter bearing red MONTREAL FE 17 1853, red PAID and framed CANADA in arc. Colourful(2).

\$3,100

3 PENCE



- 229 O 1852, Beaver, 3d red, ribbed paper, Top Sheet Margin, with Part Imprint and ever so tiny tear at top, other margins good to large, rare BLUE "S" in target cancel, extremely fine. Greene Cert. (2015). (4c).Est. Cash Value \$300 - 350
A rare combination of position and cancel.
- 230 O 1852, Beaver, 3d orange red thin paper, large margins all around, light 7-ring cancel, extremely fine. SG 7; £275 (\$410)..... (4d). \$225
- 231 O 1852, 3d red, Vertical Pair on thin paper, good to large margins all around, very fine(4d). \$450+
- 232 O 1852, Beaver, 3d orange red, Vertical Strip of Four, on rare "thin oily paper", good to large margins all around., extremely fine. Ex Tang Choi-Lok. Unitrade 4iv. (4 var.).....Est. Cash Value \$600 - 800
A rare multiple of a rare paper variety.


233



- 233 ☒ 1852, Beaver, 3d red, Wove Paper, large to enormous margins all around, extremely fine, minor re-entry (TR frame-line missing Pane A position. 33) tied by 7-ring cancel on folded letter sheet bearing STEAM - BOAT - LETTER - QUEBEC JY 13 1853, on reverse red MONTREAL receiver. (4).....Est. Cash Value \$200 - 225




234

234  **Used to Maine: 1852, Beaver, 3d red Wove Paper, Pair**, margins all around, very fine, tied by 7-ring cancels on folded letter bearing MONTREAL AU 7 1855 c.d.s., Addressed to Portland. (4).....Est. Cash Value \$200 - 250



235

235  **1852, Beaver, 3d red Wove Paper, Pair**, margins all around, very fine, tied by "21" in target cancels on envelope bearing MONTREAL OC 12 1858 cancel, on reverse HAMILTON C.W. receiver. A.P.S. Cert. (2002). (4).....Est. Cash Value \$200 - 250



236



238



237

236 ☒ **1852, 3d red**, margins all around, very fine, tied by intense 7-ring cancel on envelope bearing MONTREAL MY 17 1854, on reverse red KINGSTON MY 18 1854 c.d.s. SG 5; £450 (\$670).(4). \$460

237 ☒ **1852, Beaver, 3d red, Wove Paper**, margins all around, very fine, just tied by small ring cancel on folded letter sheet, bearing MONTREAL FE 19 1854 c.d.s. plus red company HENRY CHAPMAN MONTREAL oval, on reverse BYTOWN FEB 21 1854 receiver(4) \$460
Interesting letter and newspaper article referring to "Exchange bills" for the U.K. which later would be called Traveller's Cheques.

1855 6 PENCE SLATE VIOLET

238 O **1855, Prince Albert, 6d slate gray**, lightly cancelled, good to enormous margins all around, probably top sheet margin copy., extremely fine. SG 9; £1,100 (\$1,640).(5). \$1,500
A lovely stamp.



239

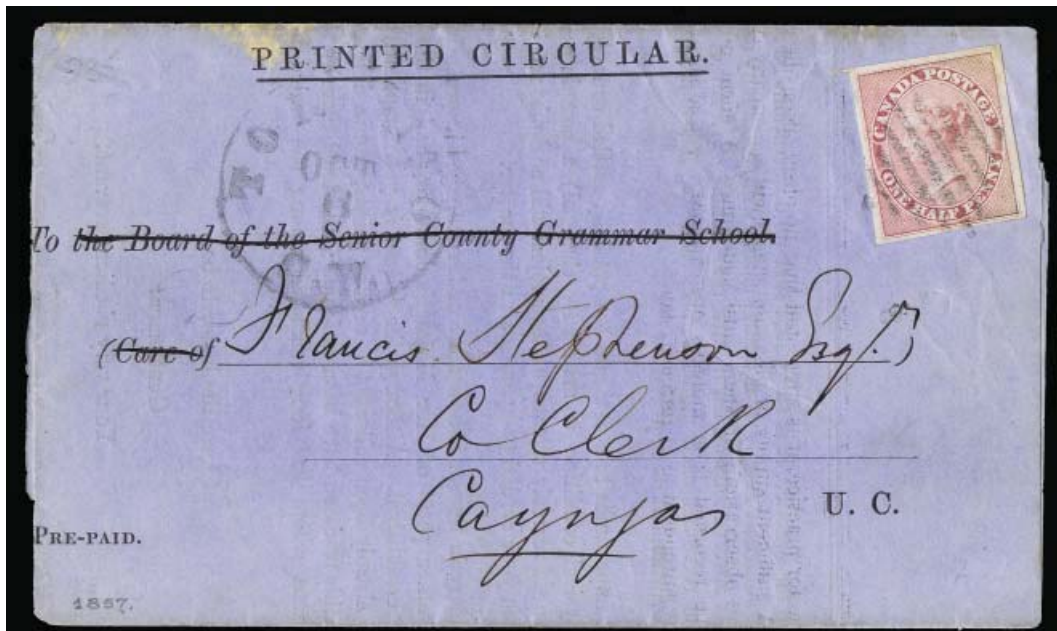


240



241

- 239 ☒ **1855, 6d slate gray**, good margins all around except just touched in a frame line at top right, fine, tied by indistinct cancel on folded letter sheet bearing HAMILTON SP14 1855 c.d.s. and two-line red CANADA PAID 10 cts, to Albany. SG 9; £2,200 (\$3,280).(5) \$1,900
- 240 ☒ **1855, 6d greenish gray**, good margins all around, faint crease, fine tied by ring cancels on a folded letter sheet bearing PORT HOOD AP 1 (1857) c.d.s., on reverse large TORONTO APR 13 1857 receiver. Greene Cert. (2002). SG 10; £2,400 (\$3,580).(5b) \$1,900
- 241 ☒ **Used to New York: 1855, Prince Albert, 6d greenish gray**, large margins all around, extremely fine, tied by indistinct cancel on envelope, with enclosure, bearing red KINGSTON NO 17 58 c.d.s., to Morris NY. (5b) \$1,900



246

247



248

- | | | | |
|-----|---|---|---------|
| 246 | q | 1857, Queen Victoria, 1/2d rose , disturbed o.g., good to close margins all round, fresh color, very fine.....(8). | \$1,100 |
| 247 | ☒ | 1857, Queen Victoria, 1/2d rose , good margins all around, very fine, tied by grid on blue 1857 PRINTED CIRCULAR bearing TORONTO OCT 6 c.d.s., on reverse CAYNJAS U.C. receiver. SG 17; £1,200 (\$1,790)..... (8). | \$1,000 |
| 248 | ☒ | 1857, Queen Victoria, 1/2d rose , margins all around except frame-line at top left, tied by grid on Toronto 1857 PRINTED CIRCULAR to Guelph. Fine cover. SG 17; £1,200 (\$1,790)..... (8). | \$1,000 |

“Not philosophers, but fret-sawyers and stamp collectors compose the backbone of society.”

ALDOUS HUXLEY



249

250

249 O 1857, 7 1/2d green, light cancel, good margins all around, fresh bright color, very fine. Senf hand stamp. SG 12; £2,500 (\$3,720).(9). \$3,500

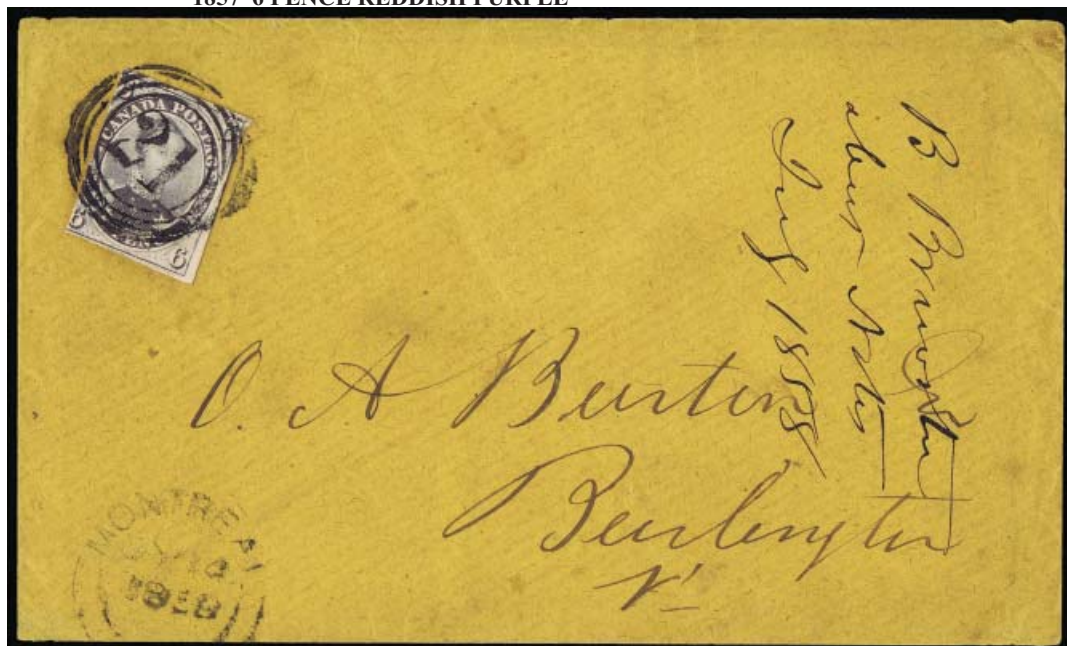
250 ☒ 1857, 7 1/2d deep green, margins all around, very fine, tied by indistinct grid cancel on neat mourning envelope bearing HAMILTON NO 10 1859 c.d.s. manuscript "Per Mail Steamer", and red LIVERPOOL COL. PACKET and NO 24 59 transit/receiver. SG 12; £5,000 (\$7,450).(9a). \$6,250

A most attractive cover.

1857 6 PENCE REDDISH PURPLE



251



252

251 O 1857, Prince Albert, 6d reddish purple, very thick soft wove paper, lightly cancelled, margins all around with frameline just touched, almost very fine. Royal Cert (1969). SG 23; £4,000 (\$5,960). (10). \$7,500


A very rare stamp.

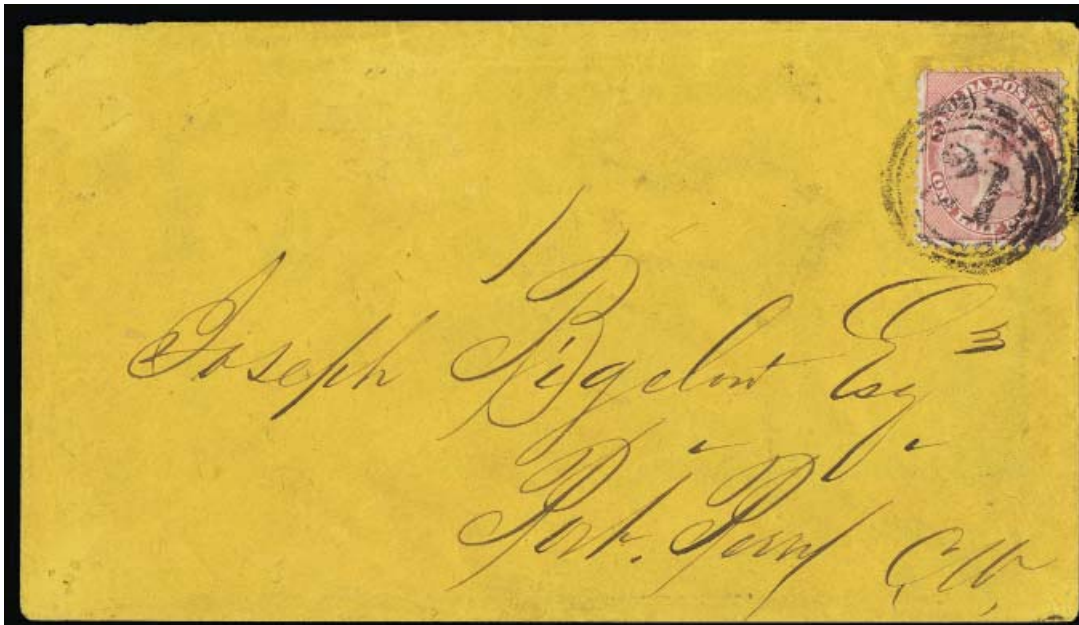
252 ☒ Used to United States: 1857, Prince Albert, 6d reddish purple, very thick soft wove paper, margins all around except in at left, tied by "21" in circles on envelope bearing MONTREAL JY 21 1858 c.d.s., to Burlington VT. Greene Cert. (2000). SG 23; £8,000 (\$11,920).(10). \$9,000

An incredibly rare cover. Our research shows only 11 covers including bisects. This includes Col. Greene, Dale/Lichtenstein, Wilkinson, Caspary and Carrington. Probably less than 15 covers exist.




253

- 253  **1858, 1/2d rose**, showing frame lines all four sides, very fine tied by “3” in ring-cancel on neat fresh small local envelope bearing GALT MY 12 (1858) c.d.s. SG 25; £2,850 (\$4,250).(11). \$2,500
A lovely and rare single franking envelope.



254

- 254  **1858, 1/2d rose**, well centred three sides, fine, tied by “21” in 4-ring cancel on manila envelope, bearing blue MAR 26 transit on reverse, to Port Perry C.W., Greene Cert. (1992). SG 25; £2,850 (\$4,250)..... (11). \$2,500
A rare usage.



257



258



260

259

261

259	O	1859, 6d gray violet, grid cancel, fresh bright color, fine, Far rarer than reflected by the catalogue value. Dale / Lichtenstein had only 4 used singles. SG 25a; £4,000 (\$5,960)..... (13a).	\$7,500
260	q	1859, Queen Victoria, 1¢ rose, perf. 11 3/4 x 12, o.g., but looks n.h., fresh with typical centering, fine. (14).	\$425
261	q	1859, 10¢ red lilac, unused, wonderful centering, very fine(17).	\$1,200



262



263

262 O 1868, 1¢ brown red, laid paper, “socked on the nose” cancel. excellent centering for this issue, fresh and very fine. Dale/Lichtenstein had only three used examples. B.P.A. Cert. (1976)..... (31). \$10,000
A great rarity!

263 O 1868, 3¢ bright red, laid paper, light grid cancel, fresh bright color, weak bottom right corner perforation, very fine(33). \$2,250



264

264 O 1888, Small Queen, 3¢ bright vermilion, light c.d.s., enormous margins all around and jumbo copy, die proof size, superb (41).....Est. Cash Value \$100 - 150

1897 VICTORIA JUBILEE ISSUE



265



266



267



268

265 q q ⊕ 1897, Queen Victoria Jubilee, 10¢ brown violet Block of Four, never hinged, brilliant color, wrinkles, fine to very fine(57). \$1,600
Lovely block.

266 q 1897, Queen Victoria Jubilee, \$2 dark purple, o.g., gum skip, well centred, fresh and very fine(62). \$1,400

267 q 1897, \$3 Queen Victoria Jubilee, o.g. hinge remnants, almost perfectly centred, fresh deep color, extremely fine. SG 138; £1,500 (\$2,240).(63). \$1,400

268 q 1897, \$4 Queen Victoria Jubilee, o.g. hinge remnant, well centred, fresh bright color, very fine. SG 139; £1,400 (\$2,090).(64). \$1,400



269	q	1897, \$5 Queen Victoria Jubilee , o.g. well centred, fresh deep color, very fine. SG 140; £1,400 (\$2,090). (65).	\$1,500
270	q q	1899, Queen Victoria "Numeral" , 5¢ blue on bluish, never hinged, wonderful centring, very fine(79).	\$440
271	q q ⊕	1908, Quebec Tricentennial 10¢ dark violet Top Margin Block of Four with Plate No. , never hinged, fresh deep color, fine to very fine(101).	\$2,000
272	q q	1908, Quebec 15¢ red orange , never hinged, fine(102).	\$550
273	q q ⊕	1923, King George V "Admiral" , \$1 orange, Block of Four , never hinged, fine to very fine.....(122).	\$960
274	q q/q	Canada Collection Primarily Admiral Coils , selection of 14 stamps n.h to l.h. including 3 pairs, 2 blocks of 4, also 3 imperforate and 2 surcharge and # 138 used, o.g., hinged or never hinged, generally fine to very fine(126, 126 ac, 128, 128a, 136-40).	\$614
275	q	Airmail Semi-Official, 1926 (25¢) Jack V. Elliot Air Service , zig-zag background, Top Right Corner Pair , l.h., file fold between stamps, extremely fine.....(CL6)	\$400

BRITISH COMMONWEALTH



276

- 276 q Australian States: New South Wales: 1850, Sydney View, 3d yellow green, bluish wove paper, unused, good to large margins all around, thin and some staining that has been "cleaned" in a professional manner, very fine appearance and very rare. SG 42; £8,500 (\$12,660).(9). \$9,500

AUSTRALIA

1917 KANGAROO "2 1/2" DEEP INDIGO ERROR



277

- 277 O Australia 1917, Kangaroo and Map, 2½d deep indigo, "1" of fraction omitted, 3rd watermark, light Victoria duplex cancel, typical perforations for the issue, well centered, very fine. R.P.S. Victoria Cert. (2015). SG 36ba; £35,000 (\$52,150)..... (46a). \$50,000

There are reportedly only fifteen used and unused copies known.

BARBADOS



278

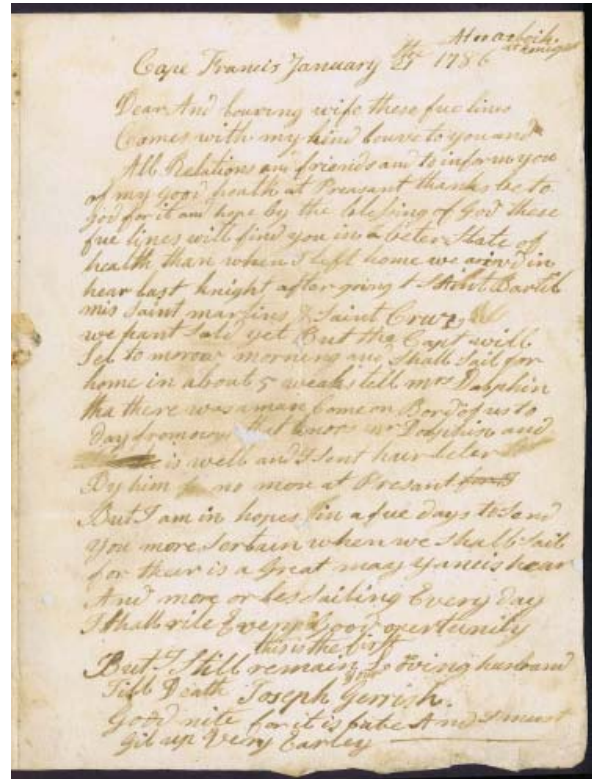
- 278 ☒ Barbados: Used to the United States: 1861-70 Rough Perf. 14-16 (1p) deep blue (4p) dull brown, both tied by "1" boot heel cancels on mourning envelope bearing NY STEAMSHIP 10 handstamp, STAMFORD CT AUG 24 initial receiver, straight line FORWARDED (to New Canaan), on reverse BARBADOS 10 187_ origin c.d.s. Ex. Hodsell Hurlock (twice). (16,17a).....Est. Cash Value \$600 - 800

A rare destination plus any ship markings are extremely scarce.

CAPE OF GOOD HOPE



Lot 279 (right and left sides See Lot 2)



279

Earliest known Postmarked Transatlantic cover from Cape of Good Hope (Cross Referenced as Lot 2), Folded letter sheet (some reinforcing) date lined "Cape Francis January the 21 1786 Atoorboik (ship name?) at knight" bearing on front at top right manuscript "P ___ (probably Ports) Way 2" annotated on receipt probably at the Portsmouth N.H. docks by a postman. For the rest of the description, please see lot number 2 in this sale.....Est. Cash Value

\$1,000 - 1,500



280

280

Used to Holland: 1858 "Triangular" Perkins Bacon Printing 1p rose plus 6p deep rose lilac plus 1s bright yellow green, square pairs of 1p and 6p all mixed margins and tied by triangular grids on MR 21 1866 envelope from SWELLENDEN to the Netherlands, bearing red LONDON transit and faint red LEIDEN, Holland receiver on the reverse; some cover soiling, An impressive 3-color franking. SG 5a,7b,8. (3,5a,6).....Est. Cash Value

\$2,000 - 2,500

COVERS TO AUSTRALIA



281

281 Used to Australia: 1855, Perkins Bacon printing, 4d blue on white paper SQUARE PAIR, good to clear margins all around, tied by triangular Cape of Good Hope cancels on small envelope bearing on reverse red KALK BAY MR 12 1856 oval, red CAPETOWN MR 12 1856 oval and c.d.s. transits and rare SHIP LETTER FREE JU 19 1856 VICTORIA c.d.s. addressed to Melbourne. B.P.A. Cert.(2016). SG 6a. (4).....Est. Cash Value

\$3,000 -
3,500

There are purportedly eight covers known to exist of all triangles used to Australia this being the only known pair paying the 4p inland and the 4p port charge. A wonderfully rare and attractive cover, in superior condition from an elusive town to an exotic destination.



282

282 1858, Perkins Bacon printing, 6d pale rose lilac on white paper, margins all around, tied by triangular Cape of Good Hope cancel on small envelope (with blue embossed COLESBURG on back flap) bearing black COLESBURG FE 18 1860 oval (origin), red CAPE oval and c.d.s. FE 22 1860 transits, red small MELBOURNE AP 13 60 transit and black BEECHWORTH AP 14 60 VICTORIA receiver. B.P.A. Cert.(2016). SG 7. (5).....Est. Cash Value

\$3,000 -
3,500

There are purportedly eight covers known to exist of all triangles used to Australia. Wonderfully rare cover in superior condition with extensive transit markings to an exotic destination.



- | | | | |
|-----|-----|--|-------------|
| 290 | q | <p>Great Britain: 1840, 1d black First Issue, Plate N-J unused, regummed, good margins all around, "faults", very fine appearance. Brandon Cert. (2014). SG 2; £12,000 (\$17,880).(1).</p> | \$11,000 |
| 291 | ✉ | <p>Used to Defraud the Post: 1840, 1d black, previously used stamp with cleaned cancel, genuinely tied by very late violet LONDON SP23 58 duplex to of all places a Welch Post Office, on reverse various Irish transits. SG 2.Est.Cash Value</p> <p style="text-align: center;">Fascinating!</p> | \$100 - 125 |
| 292 | q | <p>1841, 1d red brown, Pair, l.h. one almost n.h., fresh brilliant color, extremely fine. SG 8; £1,400 (\$2,090). ..</p> | \$1,250 |
| 293 | O | <p>1884, Queen Victoria, 5s rose and 10s ultramarine on white paper, Anchor watermark, c.d.s. cancels, well centred, fine to very fine. SG 180, 183; £875 (\$1,300).(108, 109).</p> | \$800 |
| 294 | O | <p>1884, Queen Victoria, 10s ultramarine on white paper, Anchor watermark, Pair, very lightly cancelled, extremely fine, A very rare high value multiple in sound condition. SG 183; £1,050 (\$1,560).....(109).</p> | \$1,100 |
| 295 | q q | <p>1929, P.U.C., £1 black, never hinged, very fine. SG 438; £750 as hinged (\$1,120).(209).</p> | \$1,500 |

Bidding

Harmers International avails you to SEVEN forms of bidding in our auctions.

- | | |
|--------------------------|------------------|
| 1) Mail | 2) Fax |
| 3) Agent | 4) E-Mail |
| 5) Telephone | 6) Live Internet |
| 7) Live Tele-conference. | |



298



301



299



300



302

- 298 ☒ **Used to London: 1854, Queen Victoria Lithographed, 2a green - 4 copies**, all margins all around (1 crease) cancelled by "2" in grids and tied by red marking on thin envelope (portion missing on back), bearing red London 15 SP 1858 receiver and manuscript "Via Marseille", on reverse red BOMBAY AU 69. SG 31. (5). SG £360 for single on cover (\$540)Est. Cash Value \$150 - 200

- 299 q **1855, Queen Victoria Typographed, 4a black, blue glazed paper**, lightly hinged, fresh and fine. SG 35. SG £1,200
(9). (\$1,790)

- 300 q **1855, Queen Victoria Typographed, 8a carmine, blue glazed paper**, fresh, o.g., fine. SG 36.(10). SG £950
(10). (\$1,420)

- 301 P **1911, King George V, 1/2a Proof in black**, on glazed card bearing "BEFORE STRIKING" handstamp and signed, very fine. SG 155P. (81P).....Est. Cash Value \$200 - 300

- 302 q **1929, Airmail, 8a purple "missing tree top" error**, o.g. hinge remnant, very fine. SG 224.(C5 var.). SG £350
(C5 var.). (\$520)



303



304



305 Ex

- 303 q q/q **Ireland: 1927, Free State overprint on King George V “Seahorse”, composite setting with wide and narrow dates, 5s rose carmine Pair, former l.h., latter n.h., very fine. SG 84a; £450 as hinged (\$670).(78a).** \$700
- 304 q q **1925, Free State overprint on King George V “Seahorse”, narrow date, 10s dull gray blue, Corner Copy (accent almost missing) never hinged, very faint gum toning spot barely visable, very fine. SG 85. (79).** \$550
- 305 q q **New Guinea, Airmail, 1932-34, Bird of Paradise (without dates), ½d to £1 complete and 1935, Bulolo Goldfields, £2-£5 complete, n.h. except £2 o.g., very fine. SG 190/205..... (C28-C45).** \$1,409



A Framed original signed cartoon by Terence “Larry” Parks - from the Estate of Bernard Harmer.

Available for purchase by Private Treaty

NEW ZEALAND



306

306 q **1855, Queen Victoria “Chalon Head”, 2d dull blue on blued paper**, London Printing, Large Star watermark, unused, margins all around, clear two spots at right, various faults, none detracting from the brilliant color and appearance of this rare stamp. Odenweller Cert. (2013). SG 2; £35,000 (\$52,150). Campbell-Patterson A2a..... (2). \$40,000

Our records show under 15 unused examples exist and have resided in most but not all of the great New Zealand collections. All but three are with faults or cut in.



307 O **1856, Queen Victoria “Chalon Head”, 2d blue on blue paper**, Auckland printing, unwatermarked, lightly cancelled, good margins all around, very fine. R.P.S. Cert. (2000). SG 5; £300 (\$450). Campbell-Patterson A2b(1). (5). \$325

308 O **1856, Queen Victoria “Chalon Head”, 2d blue on blue paper, Strip of Three**, Auckland printing, unwatermarked, lightly cancelled, good to clear margins all around, tiny scissor cut at top left, very fine. Ex. Consul Weinberger. Odenweller Cert. (2004). SG 5; £900 (\$1,340). Campbell-Patterson A2b(1); \$975 as singles (\$770). (5). \$975 as singles

309 O **1857, Queen Victoria “Chalon Head”, 1s green on blue paper**, Auckland printing, unwatermarked, lightly cancelled, margins all around except at places at top, fine. A.P.S. Cert. (1980). SG 6; £3,750 (\$5,590). Campbell-Patterson A6b.(6). \$4,750

310 O **1862, Queen Victoria “Chalon Head”, 2d blue, worn plate, imperf Strip of Three**, Large Star watermark, cancelled by FE 1 1864 c.d.s. and three manuscript “1”, good to clear margins all around, a fine and very rare strip. Odenweller Cert. (2007). SG £270 as singles (\$400). Campbell-Patterson A2d(11).(12g). \$300 + as singles

311 O **1862, Queen Victoria “Chalon Head”, 3d brown lilac, imperf, Pair, Large Star watermark**, lightly cancelled, good to large margins all around, extremely fine, A rare multiple. Ex. Consul Weinberger Odenweller Cert. (2004). SG 40; £320 + as singles (\$480). Campbell-Patterson A3a(1). (13). \$350 + as singles



- 312 q 1862, Queen Victoria “Chalon Head”, 1s yellow green, imperf, Strip of Four, Large Star watermark, lightly cancelled large to good margins all around except at left, This would make the most magnificent strip of three extant. Ex. Neal Allen. Odenweller Cert. (2015). SG 45; £1,400 + as singles (\$2,090). Campbell-PattersonA6d(3). (15). **\$1,560 + as singles**
- 313 q 1862, Queen Victoria “Chalon Head”, 1d carmine vermilion, perf 13, Large Star watermark, unused, brilliant color and well centred, some short perforations, fine. A great New Zealand rarity. Odenweller Cert. (2015). SG 69; £2,750 (\$4,100). Campbell-PattersonAlf(2).(16). **\$3,000**
Missing from the great New Zealand collections including Bartrop and Gordon Kaye, and better than the Burrus copy.
- 314 O 1864, Queen Victoria “Chalon Head”, 6d red brown, imperf, N Z Inverted watermark, lightly cancelled, good to clear margins all around, fine. Odenweller Cert. (2015). SG 99; £700 (\$1,040)..... (29). **\$800**



315 316

- 315 q New Zealand, Postal-Fiscal, 1935, £4 light blue, o.g. hinge removal, extremely fine. Foundation Cert. (1984). SG F166; £550 (\$820).(AR67). **\$400**
- 316 q q New Zealand, Postal-Fiscal, 1946, 30s brown, never hinged, extremely fine. SG F205; £475 (\$710).(AR88). **\$250**



The Most Important Number in Philately
will not be found in
Scott, Stanley Gibbons, Yvert or Michel

1-800-223-6076

The Harmers International Auction Department.
Dial now if you are interested in selling your collection.

FRANCE POSTAL HISTORY

REGULAR ISSUES



317

- 317 **France: 1808 Stampless Cover: Registered envelope** (with tatty back flaps) bearing #1970 Bourges CHARGEMENT printed label dated Manuscript "7 8 1808", 2-line P.I. PONS and double red P.P. Est. Cash Value \$125 - 150

Letter addressed to "Citoyen", obviously from the Revolutionary period.



318

- 318 **Used to United States: 1850, Ceres, 15c green on greenish and 1 fr light carmine, 15c a large margined Pair, partial sissors cut between stamps, clear of frame line (unobtrusive margin repair), tied by PARIS 25 MAI 53 c.d.s. and lozenge, 1 Fr margins to just in to frame line, also tied by lozenge, on folded letter bearing manuscript "via Liverpool" large 5 BOSTON BR PKT JUN 8 transit, "Per Steamer", thence to a Baltimore bank president. Catalogue for 15c pair on cover., Rare First Issue Trans-Atlantic cover to the United States. Brun Opinion. Yvert 2..... (2,9). \$39,000**



319

- 319 Used to Germany: 1863, Napoleon III perforated, 20c blue on bluish, TETE-BECHE PAIR, some perforation faults top left, tied by indistinct numeral in star lozenge cancels on envelope bearing PARIS MINISTERE DES FINANCE 31 DEC 67 c.d.s., two red boxed PD postmarks, on reverse FRANKFURT 11 68 receive. P. Scheller Cert., Balasse handstamp. (26a) \$2,500



320

- 320 1862-71, Napoleon III perforated, 40c orange on yellowish, 20c, 10c, rough perfs and one vertical crease (20c) all tied by "352"(?) in losenge cancels on commercial paper wrapper (some short back flaps) bearing PARIS 2 DEC c.d.s., manuscript "Papiers d'affaires, avec Lettre explicative", Acolourful and rare three-color double rate letter. Yvert 23. (27,26,25).....Est. Cash Value \$150 - 300

EXTENSIONS

Any lots placed on extension for expertising MUST be submitted by Harmers International, Inc. Submission by the purchaser will nullify any extension request. Notify us of lot number and expert.

- 321 **1869, Napoleon III Laureate, 10c bistre on yellowish, bisect**, together with 1870 20c blue (57) horizontal file fold affects both, with bisect corner re-attached, tied by "453" in lozenge on folded letter sheet bearing ARGENTAN 27 71 c.d.s. and company handstamp, on reverse PARIS transit and MARSEILLE receiver. Yvert 28A; €5,000 (\$5,600).(32c). \$3,750



322

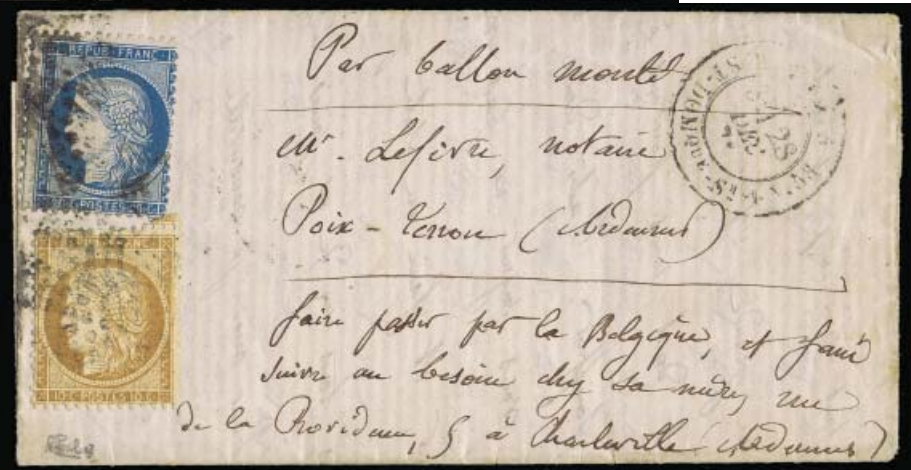
- 322 **1869, Napoleon III Laureate, 5fr gray lilac on lavender, Pair & Single (couple of faults) used with 80c pair, 25c and 15c, fine to very fine all tied by "6346" in lozenge cancels on rare Registered 23 FEVR 72 envelope (top back flap incomplete) from Lyon to Saugues. Foundation Cert. (2015) verifying cancels, Bolaffi handstamp & signed Diena. Yvert 33. (37, 63, 58, 56).....Est. Cash Value \$1,000 - 1,500**
A most impressive four -color franking.

- 323 **Balloon Montè Used to Belgium: 1870, Siege of Paris, 10c bister on yellowish and 20c blue, tied by indistinct lozenge cancels on folded letter sheet bearing PARIS 28 DEC 70 c.d.s. manuscript "faire passe par la Belgique", on reverse PARIS transit, addressed to Poux-Tenon. Calves handstamp. Yvert 36. (54, 57).....Est. Cash Value \$150 - 200**

- 324 **Used to Germany: 1870, Siege of Paris, 10c bister on yellowish, Tête-Bêche Pair (pressed out crease) tied by indistinct cancels on a folded letter to Hanover datelined Bordeaux Jul 26 1871, bearing blue company handstamp, red boxed transit and 32pf (due) manuscript, on reverse AUSG. 29 7 Germany receiver; very attractive. P. Scheller Cert. (2014). Yvert 36b; €8,000 (\$8,960).(54a). \$5,500**
Striking combination of tête-bêche pair, foreign destination and underpaid letter.



321



323



324

DESTINATIONS



325

- 325 **Used to Chile: 1862 - 71, Napoleon III perforated, 80c rose on pinkish, 40c orange**, generally fine, tied by "1" in losenge cancels on folded letter sheet bearing PARIS 15 MA 164 c.d.s., red LONDON transit and oxed P.P. manuscript "Voie de Panama" and PANAMA JU 8 1864 transit to Valparaiso. Yvert 24. (28, 27).....
Est. Cash Value \$100 - 150



326

- 326 **Used to Italy: Maritime Usage: 1868, Napoleon III Laureate, 40c pale orange on yellowish**, fine, tied on folded letter sheet bearing manuscript "Voie de Mer" and company oval, placed on ship from Marseille calling at Genoa, on arrival, stamps tied by Italian "13" in grid and handstamped "FRANCIA VIA DI MARE", on reverse GENOVA 16 AUG 70 receiver. Very rare usage and combination. Yvert 31a. (35). Est. Cash Value \$300 - 500



327



328

- 327 **Used to Nova Scotia: 1862 - 71, Napoleon III perforated, 80c rose on pinkish, fine, tied by "307" in losenge on neat small envelope bearing DIJON 6 JUIN 67 c.d.s. red LONDON transit and boxed PD, on reverse french transit and Halifax JU 17 1867 receiver. Very rare destination. Yvert 24. (28)....Est. Cash Value \$200 - 300**
- 328 **Used to Sweden: 1872-73, Ceres, 5c yellow green on pale blue, STRIP OF THREE, tied by red PD 3 SEPT 7 PARIS c.d.s. strikes on CREDIT LYONNAIS wrapper to Stockholm. Rare circular rate to Sweden. Yvert 53. (53).....Est. Cash Value \$150 - 200**

Fresh and colourful.

SPECIAL VIEWING - At our Offices

The week prior to the auction, lots will be available for viewing at our offices in Yorktown Heights, NY.

Less than 40 miles from mid-town, NYC.

Convenient to Westchester Airport


or

a scenic 40 minute train ride along the majestic Hudson River.


Call for details and appointment



329

- 329  **Foreign Offices: Used from Algeria: 1862-71 20c blue**, cancelled by numeral in losenge on neat Registered envelope bearing LETLELAT 16 OCT 63 c.d.s., large "30" due manuscript "Taxe p.(our) timbre poste ayant déjà servi" translation - Postage due for stamp already used. Red CHARGE. Someone tried to use a stamp to prepay the 20c rate on the letter, but it was caught by the Algerian post office. The CHARGE (registration) so the adreesee was charged 30c due, 20c local postage and 10c registrstion, on reverse MAS-CARA 17 OCT ALGERIE receiver, a rare combination of markings (26).....Est. Cash Value \$200 - 400
- A wonderful example of defrauding the post.*



- 330  **Armée des Alpes: 1854, Napoleon III imperforate, 20c blue on bluish, type I**, good to large margins all around, very fine, tied by "AA5C" in lozenge on neat envelope bearing ARMEE DES ALPES 5e Corps 12-5-1859 c.d.s., on reverse CLERMONT A PARIS transit and PARIS 16 MAI 59 receiver. Yvert 14A. (15).....Est. Cash Value \$150 - 200

"The President of today is just the postage stamp of tomorrow"

Gracie Allen



331

- 331 **Used from Argentina: 1870, Siege of Paris, 40c orange PAIR plus 10c bistre PAIR on yellowish, all tied by anchor in losenge cancels on envelope bearing BUENOS AIRES 10 AGO 1875 origin c.d.s., Buenos Aires Paq. transit, red boxed PD and straight line "POR SENEGAL" (steamer), on reverse Bordeaux transit and AUCH 5/09/75 receiver. Yvert 38. (59, 55).....Est. Cash Value \$200 - 300**



332

- 332 **Used from Cuba: 1868, Napoleon III Laureate, 40c PAIR pale orange on yellowish, fine, tied by anchor in losenge on folded letter sheet (addressee partly erased) bearing CUBA 18DEC69 octangular d.s., boxed PD and Ligne de St Nozaire, on reverse, ST. Thomas transit and BORDEAU receiver. Yvert 31a. (35).....Est. Cash Value \$150 - 200**



- 333 ☒ **Used from Japan: 1862, Napoleon III perforated, 80c rose on pinkish, rose** tied by anchor in losenge on part of folded letter sheet bearing YOKOHAMA 1 MARS 67 Bureau c.d.s. red boxed PD and Pag Suez transit, on reverse ST. ETIENNE 27 AVRIL 67 receiver. An economical example of very rare use. Yvert 24. (28).....Est. Cash Value \$150 - 200

- 334 ☒ **Used from Mauritius: 1870, Siege of Paris, 40c orange on yellowish,** tied by LIGNET 3 MARS 77 PAQ c.d.s. on folded letter sheet docketed "Port Louis" and bearing manuscript "St _____ Via Suez & Marseille", on reverse, Marseille transits and NICE 27 MARS 77 receiver. An extremely rare origin. Yvert 38. (5 9).....Est. Cash Value \$400 - 600

- 335 ☒ **Used from Turkey: 1862, Napoleon III perforated, 40c orange on yellowish and 10c bistre,** tied by anchor in losenge on folded letter sheet docketed "Constantinople 20 aout 1863" and bearing blue company oval, red boxed PAQUEBOT DE LA MEDITERRANEE, indistinct 20 AOUT 63 c.d.s. and boxed PD, on reverse Marseille transits and LYON 27 AOUT 63 receiver. Yvert 23. (27, 25).Est. Cash Value \$150 - 200

- 336 ☒ **Used from Turkey: 1862, Napoleon III perforated, 40c orange on yellow Pair and 2 Singles,** one stamp corner damage, tied by anchor in losenge cancels on folded letter sheet (fumigation slits) bearing Constantinople docketing, VOLGA 12 JUL 65 c.d.s. transit, boxed PD, on reverse blue CONSTANTINOPLE company oval, Napoli transit and GENOVA 20 AUG 65 receiver. Bolaffi handstamp. Yvert 23. (27).....Est. Cash Value \$200 - 300



336

Harmers International, Inc. offers Live Internet bidding in our auctions.

Internet Service can be accessed through our website or directly through Stamp Auction Network.Com.

Here are few important details to remember.

- 1) All bidders must register Make Certain you have the right Company.
- 2) Call or send us an email if you are not certain.
- 3) Internet speed and performance varies . "Downed Systems and Lost Connections" can occur. We strongly recommend using the phone or an agent as a back-up.



337

- 337 **Used from Turkey: 1862, Napoleon III perforated, 80c rose on pinkish**, fresh and very fine, tied by beautiful blue “5102” in lozenge on folded letter sheet, missing two additional stamps, docketed Ismail Nov 67 bearing matching blue TULSCHA 3 Nov 67 c.d.s., boxed PD, and blue company oval, on reverse CONSTANTINOPLE transit and Messina receiver. Roumet handstamp. Yvert 24. (28).....Est. Cash Value \$100 - 150



338

- 338 **Used from Turkey: 1868, Napoleon III Laureate, 40c pale orange, 20c blue on yellowish**, tied by anchor in losenge cancels on folded letter sheet (trimmed side flaps), bearing SMYRNE PAQ FRX No. 5 18 JUIL 69 octangular d.s., on reverse Napoli transit and MESSINA receiver, to Gallipoli, Italy with a variety of Italian transits. Yvert 31a. (35, 33).Est. Cash Value \$150 - 200

COMBINATION COVERS



- 339 USED from Egypt: 1868 Napoleon III Laureate, 40c pale orange on yellowish, Egypt 1867 2pi blue, former tied by "5080" in losenge, latter tied by ZAGAZIG 27 MARZ 67 c.d.s. on very large part of folded letter sheet bearing ALEXANDRIE 27 MARS 67 transit, red boxed PAQUEBOTS DE LA MEDITERRANEE and black boxed P.D. to Marseille. Cover is actually only missing bottom back flap and a small portion of front. A very rare combination. Foundation Cert (2016). Yvert 31a. (French 35, Egypt 14).....Est. Cash Value \$500 - 1,000



340

- 340 Württemberg/France Combination Franking, Württemberg 1865, 9kr brown stamped envelope, cancelled by TEINACH 22 8 67 c.d.s. to Colmar, Alsace, forwarded to Barr with France 1862-71, 20c blue tied by "1076" in losenge, COLMAR 24 AOUT 67 c.d.s. initial receiver, on reverse COLMAR forwarder, HOHWALD transit and BARR 25 AOUT 67 receiver. R. Calves handstamp; Weid Cert. (1995); Irtenkauf Cert. (2015). Yvert 22. (26).....Est. Cash Value \$750 - 1,000



341

- 341 **Mexico / France Combination Franking, Mexico 1864 2r orange (23, tear UR), postmarked TACNA 8 MARS 66 c.d.s. along with France 1862 80c rose tied by anchor in lozenge; on reverse COR. D ARMEE PAQ No. 3, 13 Mars 66 c.d.s. and BORDEAUX 8 AVRIL 66 receiver. The cover is missing an 80c stamp. MEPSI Cert.(2015). Yvert 24. (28).....Est. Cash Value \$500 - 750**



342

- 342 **US/France Combination: Used to the United States: 1870 to 1873 Bordeaux, 30c brown imperforate 40c orange perforated, mixed margins various cancels on neat re-addressed mourning cover bearing "2795" in losenge red LONDON 17 MR 71 transits, initial BOSTON receivers and U.S. Banknote 3c for forwarding to New York . Very colourful. Yvert 47. (46, 59).....Est. Cash Value \$100 - 150**

FOREIGN ISSUES



343

343



Colombia Air Post: 1919 2c carmine rose Position 7, very fine tied by JUNE 18 1919 Barranquilla-Puerto-Colombia red c.d.s. strikes on envelope. Friedl Cert. (1974); Moorhouse Cert. (2015)..... (C1).

\$1,700 off cover



344

344



France Airmail, 1936, "Banknote" 50fr ultramarine, never hinged, very fine. Yvert 15.(C15).

\$1,700



**Like to trawl,
but do not want to stay glued to your computer?**

Register to participate in our auction through our Teleconference Service.Contact us for details.



345 Ex



346

- 345 ☒ Germany Air Post: 1928-31 Zeppelin South America, 2m blue, 2 flown covers, 1930 and 1931 Germany to New Jersey(C38). \$850
- 346 ☒ 1931 Polar Flight 4m black brown, tied on 24.7.31 flown cover to New Jersey(C42). \$875
- 347 ☒ Polar Flight 4m black brown, on duplicate cover(C42). \$875
- 348 q q Israel: 1948 Complete Booklet containing Panes of Six of 5c, 10c, minila covers with "Jenson & Nicholson Paints" and "Peugeot" advertising, very fine.Bale B1 Bale 400



347



348



349

349 q q Israel: 1948 Complete Booklet containing Panes of Six of 5c, 10c, 15c and 20c, orange covers with "Jenson & Nicholson Paints" and "Giftboxes of Oranges" advertising, very fine.Bale B3a Bale \$1,600



350

350 O Romania: 1858, Moldavia, 1st Issue, 54pa blue on green laid paper, neat blue DC JASSY 21/8 c.d.s., good margins all around, "slight repaired thinnings", fresh paper and color, still a very fine example, Heimbuchler Cert. (2015). Michel 2(2). \$10,000



351


351  San Marino Air Post: 1933 3L on 50c orange PAIR, tied on May 29 1933 flown cover to Germany. (C11). \$300 for single



352

352  San Marino Air Post: 1933 12L on 2L yellow brown, tied on May 29 1933 flown registered cover to BrazilC14). \$1,150

COLLECTIONS & VARIOUS CANADA

- 353 q **Canada: 19th and 20th Century Unused Collection, in Scott Album, only early 3 pence and 5 pence used, Large and Small Queens complete, o.g. or unused, Jubilees to \$1.00 generally o.g. there are some with n.h. interspersing from 1910 on, complete from 1903 to 1969, back -of-book complete, very clean with many well centred. Well worth close inspection.....Est. Cash Value** **\$2,000 - 2,500**
- 354 q O ☒ **Canada 19th and 20th Century extensive collection of many hundred in six albums, mostly White Ace pages, some earlier including Queens, Jubilees to \$1.00 unused, plus \$4.00, \$5.00 used, some never hinging starts with Admirals, the usual sets, Back of the Book, albumn of booklet panes (from #232) coils, Officials, also pre-cancels, and 1930's First Day Covers and flights.....Est. .Cash Value** **\$500 - 600**
Quite good and clean.
- 355 q / O **Canada Collection: Select group of 15 stamps, most on original auction lot sheets, comprising #4, #12, #19 s.e., #14 (2 copies), #19, #31, 42,74,76 kiss plus Nfld #C3 (2 copies) PEI #5b o.g., some faults and some beauties worth inspecting.....Est. Cash Value** **\$400 - 500**
- 356 q / O **Canadian Provinces Collection: New Brunswick and P.E.I. Group of 14, o.g. and 1 used on 2 album pages, generally fine(NB lused,6-8,9;PEI. 5,6,9a, 9-12, 14-16).** **\$937**
- 
355 Ex
- 357 ☒ **France “GUERRE 1939-1945 Documents Postaux Obliterations etc.” FOUR very large and heavy special leather Albums, with slip cases titled in gold on ribbed spines: German Occupation approximately 1000 covers neatly mounted and documented including strong France with Poste Armee Nos, marine “Sabotage of Fleet PPC”, censored, almost 1 volume of Alsace Lorraine, strong Czech and Poland some Belgium, Italy, Norway, Danzig and Lundy. Super variety; a life’s workEst. Cash Value** **\$2,000 - 3,000**
- 358 ☒ **Germany World War II: 30 covers, virtually all on Nutmeg or Stampazine lot sheets, including Fieldpost, Occupations, Airs, 1 Ghetto etc., also 5 Nazi officer autographs including J. Burckel, Hollidt, Hans Hube, Paulus, Schorner mostly photos, plus documents. Fasinating group..... Est. Cash Value** **\$300 - 400**
- 359 q O ☒ **Heligoland Collection 1867 - 78 selection of over 150 stamps, in pochettes, a stock card and 1 album page while replete with reprints there maybe genuine with 27 used, and one cover. For the really knowledgeable.....Est. Cash Value** **\$200 - 250**
- 360 q O ☒ **India Collection: small group of several hundred, mostly n.h. George V and George to 25r, blocks of all sizes, #53 block of 28. 1854 1a, 2a Specimen sheet of 38, plus 14 Victoria postal cards. Very eclecticEst. Cash Value** **\$150 - 200**
- 361 q **Israel Collection: Group of 21 stamps, all with tabs except 1-9, mostly n.h., occasional tiny faults, generally very fine (1-9, 17-25, 28-30).....Est. Cash Value** **\$200 - 225**
- 362 ☒ **Zeppelin Collection: 21 Flown covers, comprising 7 German,2 Brazil, 1 Liechtenstein, 1 United States, plus 8 German 1st Issue 1m franked covers, plus Brasil and German signed by captains, vast majority to same address in Newark NJ. Nice selection.....Est. Cash Value** **\$200 - 300**



Photographs of the large lots can be found on the internet and on our website: www.HarmersInternational.com

~ Collections & Various ~
AREA COLLECTIONS

363	q	British Commonwealth 19th and 20th Century Select group of 56 , generally very fine stamps including Bahamas 158-73 n.h. blocks, Barbados 85a, 3 Bermuda high values, Cape #3 2 copies, G.B. #1 used #3 unused, Sea Horses, Malta #82, New Zealand, Samoa, St. Kitts #36, 3 with Foundation Certs. Generally very fine.....Est. Cash Value	\$600 - 800
364	q	British Commonwealth 1935 Silver Jubilee , 286 stamps plus 20 duplicates, Somaliland missing 1a, 1.h. few n.h., neatly arranged on stock sheets, very fine.....Est. Cash Value	\$300 - 400
365	O <input checked="" type="checkbox"/>	British Commonwealth 1948 / 1949 Silver Wedding sets , 49 covers dated 1948 or 1949, 5 used sets (off cover), 100 stamps out of the total of 148. Generally fine to very fine.....Est. Cash Value	\$500 - 600
366	q / O	Foreign Collection: 20th Century Select group of 23, popular stamps all but 3 unused (mixed gum) including all German Zepps, France C8-17, Italy C48, 49, Switzerland C3-12, Austria B106-09 plus others. Useful group generally very fine.....Est. Cash Value	\$300 - 400
367	q O <input checked="" type="checkbox"/>	Foreign - little British, mostly 20th Century, an eclectic group of many hundreds in small box, including 27 letters, auction lot sheets, a lovely 1947 French UPU Presentation Book, better Turkey, well worth inspection.....Est. Cash Value	\$300 - 400
368	<input checked="" type="checkbox"/>	British and Foreign primarily 20th Century, 75 covers , including 19 on lot sheets (Nutmeg and Stampazine plus others), 7 letters Russia, France, etc also Antarctica Collection 60 loose covers, Australia, Belgium, Chile, Japan, also United States, 4 Ellsworth submarine plus clippings and information. Very nice selection not of the normal fare.....Est. Cash Value	\$200 - 400
369	q O <input checked="" type="checkbox"/>	British and Foreign: Box of thousands mostly used and disorganized , BUT includes French 19th Century town numeral collection, nice groups of Transvaal, Ryukyu Provisional sheets plus a little Asia, covers of the world. Lots of fun.....Est. Cash Value	\$150 - 250
370	q	Europe 20th Century Group of 24 mostly n.h. (some regummed) better stamps or sets comprising Germany #6 used, Italy #477, San Marino #134-38, 143-50, Luxembourg #318-20 (2 copies), Switzerland #B206, all on original auction lot sheets, generally fine to very fine.....Est. Cash Value	\$150 - 200

End of Sale - Thank you

Facilities for the mail-bidder

1. Where you want one of several similar lots, bid on all such lots adding an "or" between.
2. If you want to limit your purchases, simply insert the amount on the face of the bid form. When the limit is reached, subsequent bids will be deleted.
3. Postal viewing can be arranged. Please call our offices for details.
4. Valuation of lots in which clients are interested are provided upon request.

5. "Buy" bids are respectfully declined to prevent misunderstandings. Instead, please give your maximum bid and we will, as always, endeavor to save you as much as competitive bidding will permit.

6. Prices realized will be posted on our web site.

7. We will confirm receipt of your bids by phone, fax or Email. Please contact us if your bids have not been acknowledged 24 hours prior to the stated auction date.

8. On-Line, TelCon and Phone bidding is available. Contact us at 212.532.3700 or www.HarmersInternational.com.

New Bidders

If you are not a recognized Harmers International, Inc. bidder, please complete our New Bidder Registration Form.

You will be requested to submit three auction house / dealer credit references or may be asked to submit a deposit.

- Thank you

----- fold here and seal -----

HAVE YOU:

- Checked your bids?
- Entered the Date of Sale?
- Checked your name and address?
- Signed the form?

Please, for your security, **DO NOT** include any Credit Card Information on this form.

Harmers



International Inc.

www.HarmersInternational.com
Ph. 212-532-3700

**NOT Affiliated with
H.R. Harmer, Inc.**

----- fold here and seal -----

Place Stamp Here

DATED BIDS
- IMPORTANT -

Harmers International, Inc.
1325 Echo Hill Path
Yorktown Heights, NY 10598
U.S.A.

CONDITIONS OF SALE

THE PLACING OF A BID SHALL CONSTITUTE ACCEPTANCE OF THE CONDITIONS OF SALE

BIDDING

1. Unless announced otherwise by the auctioneer, all bids are per lot, as numbered in the printed catalogue applicable to such auction (the "Catalogue"). Harmers International, Inc. (hereinafter "Harmers"), as agent for the consignor or vendor, shall regulate the bidding and shall determine the manner in which the bidding shall be constructed. Harmers reserves the right to withdraw any lot prior to the commencement of bidding (without liability to any potential purchaser or agent), to re-offer any withdrawn lot, to divide a lot and to group two or more lots belonging to the same consignor or vendor. Harmers has the right to refuse any bid believed not made in good faith, demand a cash deposit from anyone prior to bidder registration, or demand payment at the time the lot is knocked down to the highest bidder for any reason whatsoever. Harmers requires new customers submit a bidders registration form at least ten (10) days prior to the auction.
2. The highest bid acknowledged by the auctioneer shall prevail. Should a dispute arise between bidders, the auctioneer, in his sole discretion, shall determine who is the successful bidder and whether to re-offer the lot in dispute. Should a dispute arise after the sale, the auctioneer's sale records shall be conclusive.
3. **On all lots sold, a commission of 18% on the hammer price is payable by the buyer to Harmers.**
4. (a) The auctioneer reserves the right to bid on behalf of clients (and consignors or vendors) but shall not be liable for errors and omissions in executing instructions to bid, however received, notwithstanding whether such errors or omissions are those of the bidder, the bidder's agent or the auctioneer.
(b) All lots are offered subject to a reserve price. The auctioneer, at his discretion, may implement such reserve price by bidding on behalf of the consignor or vendor.
(c) It may also be assumed that all consignors have been advanced monies against the sale of their stamps and Harmers therefore has a security interest over and above the auction commission.
(d) Purchase made by a consignor or vendor or his agent on his own lots shall be considered as a sale and shall be subject to commissions and sales tax as set forth in these Conditions of Sale.
(e) Agents are responsible for all purchases made on behalf of their clients, unless other arrangements have been confirmed by Harmers in writing prior to the auction.

PAYMENT FOR PURCHASES

5. Payment for lots and the commission payable with respect thereto, including those on which extensions are desired (see paragraph 9 of these Conditions of Sale), shall be as follows:
 - (a) **Floor Bidders.** Payment of the purchase price and the commission applicable thereto, or such part thereof as Harmers shall require, shall be made by the purchaser in such manner as Harmers may determine. The name and address of the purchaser of each lot shall be given to the auctioneer immediately following the sale of such lot.
 - (b) **Mail , On-Line and Telephone Bidders.** A successful bidder will be notified of lots purchased. Before Harmers will send such lots, payment in full (including the commission payable to Harmers) must be received by Harmers within three (3) business days of receipt of the aforesaid notification. However, a purchaser known to Harmers, or who furnishes satisfactory references, may, at Harmers' option, have purchases delivered or forwarded for immediate payment in US dollars. Mailed delivery will be to the registered address on the bid sheet and receipt of proof of shipment to the registered address shall constitute delivery. All charges for handling, delivery, and insurance (to the extent obtained by Harmers on behalf of the purchaser) shall be added to the purchase price. Risk of loss in transit shall be on the purchaser.
(c) Credit Card and PayPal Users are subject to an additional 3% fee and may be requested for a bidding deposit.
6. Title shall not pass to the purchaser until full payment has been received by Harmers, as agent for the consignor or vendor.
7. (a) Purchasers agree to pay for lots as specified in paragraph 4 of these Conditions of Sale and no credit shall be extended. A late payment charge of 2% for the first month and 2 ½% for each succeeding month compounded shall be added and Harmers will charge on-file credit cards if payment is not made in accordance with aforesaid conditions.
(b) In the event that a bidder shall fail to comply with these Conditions of Sale ("Non-Complying Bidder"), then, as to any lot with respect to which such failure to comply occurs, Harmers may, at its sole discretion, re-offer such lot during the same auction or at an auction at a later time, or by private treaty at such time at Harmers, at its sole discretion, deems appropriate. The Non-Complying Bidder shall be liable for the deficiency, if any, between the hammer price and the net proceeds of a sale to a subsequent purchaser (whether at auction or by private treaty), as well as for all costs and expenses of both sales, all other charges due thereunder (including commissions with respect to both sales, whether payable to Harmers or to a third party) and all incidental damages related thereto. It shall be at Harmers' sole discretion to determine whether to re-offer the lot theretofore hammered-down to a Non-Complying Bidder at the same auction, or by private treaty in due course, or at a subsequent auction, conducted by Harmers, and in no event shall any surplus

- arising from the sale of a re-offered lot be payable to a Non-Complying Bidder.
- (c) A defaulting purchaser shall be deemed to have granted Harmers a security interest in property in Harmers possession owned by such purchaser. Harmers shall have all the rights afforded a secured party under the New York Uniform Commercial Code with respect to such property and may apply against such obligations all monies held or received by it for the account against such obligations all monies held or received by it for the account of, or due from Harmers to such purchaser.
 - (d) If Harmers takes any legal steps to secure payment of a delinquent account, the defaulting purchaser shall be liable for all legal and other expenses incurred by Harmers to secure such payment, including but not limited to a reasonable allowance for attorneys' fees. For purposes of this paragraph, the term "legal steps" shall be deemed to include any and all consultation by Harmers with its attorneys with respect to all matters arising out of a delinquent account.

EXHIBITION AND INSPECTION OF LOTS; QUALITY

8. (a) **On Premises Inspection and Postal Viewing.** Ample opportunity is given for on premises inspection prior to the auction date and, upon written request and at Harmers discretion, for inspection by postal viewing (all as detailed elsewhere in the Catalogue).
(b) Each lot is sold as genuine and correctly described, based on individual description as modified by any specific notations in the Catalogue, including but not restricted to the section thereof entitled "Key to Cataloguing".
(c) **Quality.** Any lot which a purchaser considers to be incorrectly described shall be returned to Harmers within two weeks of its receipt by such purchaser ("Returning Purchaser"), provided, however, that the same must be received by Harmers within four weeks of the date of the auction. Any lot, the description of which is disputed, must be returned intact in the condition received by the purchaser. Notwithstanding the foregoing, the following lots are not returnable, except at the sole discretion of Harmers: (i) lots from purchasers who attended the exhibition of lots; (ii) lots examined by postal viewing; (iii) lots on account of their appearance, if they are illustrated in the Catalogue; (iv) lots described as having repairs, defects or faults; (v) U.S. stamps (through 1918) for reasons of paper inclusions; (vi) no encapsulated stamp (unless originally offered in this condition); (vii) lots containing more than ten (10) stamps; and (viii) contradictory grading certificates.

EXTENSION OF TIME FOR CERTIFICATION

9. When an opinion from a "generally recognized authority" is desired by the purchaser:
 - (a) A request for expertising must be made to Harmers, in writing, within 7 days of the date of the auction. The request must include the name and address of the "generally recognized authority". The "generally recognized authority" must be approved, in writing, by Harmers.
 - (b) **Harmers, and only Harmers, will submit the item to the agreed upon expert.**
 - (c) If a lot is certified by a "generally recognized authority" to be other than as described, or the authority declines to express an opinion, this is normally grounds for the return of a lot.
 - (d) Except to the extent set forth in paragraph 10 of these Conditions of Sale, payment of the expense of certification will be paid by the purchaser.
 - (e) In the event that a dispute cannot be resolved by reference to a "generally accepted authority" and Harmers thereupon undertakes to re-offer the lot with a description identical to the description disputed, the Returning Purchaser shall be liable for the deficiency, if any, between the proceeds of the sale to the Returning Purchaser and the proceeds of a sale to a subsequent purchaser, as well as for all costs and expenses of the re-sale, including commission, and all incidental damages.

EXPENSES OF CERTIFICATION

10. Expenses of certification shall be borne by the purchaser, except where a lot is certified "other than as described" and is returned to Harmers in accordance with paragraph 9 of these Conditions of Sale. Expenses incurred in the submission and the return of a lot under paragraphs 8 or 9 of these Conditions of Sale are not refundable, except the cost of the certificate itself.

SALES TAX

11. Unless exempted by law, a purchaser shall pay New York State and local sales taxes, or any compensating use taxes of any other State or government authority (collectively, "Taxes"). A purchaser claiming an exemption from payment of any Taxes shall provide evidence acceptable to Harmers of such exemption

APPLICABLE LAW, JURISDICTION, ETC.

12. All matters arising out of this auction shall be governed by the laws of the State of New York, without giving effect to the choice of law principles thereof.
13. Any controversy or claim arising out of or relating to this auction shall be settled by arbitration in the City of New York, State of New York by a single arbitrator in accordance with Rules of the American Arbitration Association and judgment upon the award rendered by the arbitrator may be entered in any Court having jurisdiction, provided, however, that notwithstanding the foregoing, if either party determines that emergency relief is required in the nature of a temporary restraining order or preliminary injunction that such party may, without being in violation of this paragraph 13, commence such emergency proceedings without the involvement of the American Arbitration Association or an arbitrator, whether or not an arbitration proceeding has been commenced.
14. The purchaser at auction (a) consents and submits to the jurisdiction of the Courts of the State of New York and of the Courts of the United States for a judicial district within the territorial limits of the State of New York for all matters arising out of the auction sale, including with out limitation, any action or proceeding instituted for the enforcement of any right, remedy, obligation and liability arising under or by reason thereof; and (b) consents and submits to the venue of such action or proceeding in the City and Country of New York (or such judicial district of a Court of the United States as shall include the same).



29 June 2016

