

United States, British Commonwealth, Great Britain & Foreign



Tuesday, July 23, 2019

AT THE COLLECTORS CLUB, NYC

Harmers



International Inc.

Not Affiliated with H.R. Harmer

ALBERT CHAMBERS BRITISH COMMONWEALTH
THORNS CRAVEN U.S. * A. LERBS INDIA & HELIGOLAND
“JAMES TAYLOR” U.S. PLATE BLOCKS

KET TO CATALOGUING

SYMBOLS

* Unused	** Never hinged	O Used
☐ On cover	Δ On piece	S Specimen
⊕ Block of Four	⊞ Block larger than four	E Essay
TC Trial Colour	DP Die Proof	PP Plate Proof

MAJOR ABBREVIATIONS

c.d.s. = Circular Date Stamp; C.T.O = Canceled to Order;

F.D.C. = First Day Cover ; ms. = Manuscript; var. = Variety

CONDITION

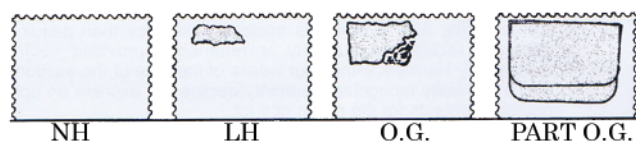
The various gradings of stamps are, in order; superb, extremely fine, very fine, fine. In the case of sets, large blocks, sheets, etc., the condition quoted represents the average, and quality above and below this standard can be expected.

Mixed Condition: In large lots, the condition is generally expected to range from fair to at best fine. Serious defects can be expected.

Handstamp on reverse: Denotes either a dealer, collector or indecipherable expert's mark.

Signed by: Denotes either the actual signature or mark of the expertiser. The absence of mentioning a signature does not reflect on the ability or knowledge of the party involved

GUM:



Shaded portion can represent an actual hinge or the area disturbed by a hinge.
n.h. = Never Hinged – unused with original gum in Post Office state and unmounted.

l.h. = Lightly Hinged – unused with full original gum showing some evidence of a previous hinge which may be present in part or entirely removed.

o.g. = Original Gum – unused with original gum somewhat disturbed by previous hinging which may still be present.

part o.g. = Part Original Gum – unused with original gum, large hinge remnants may or may not be present.

disturbed o.g. = Disturbed Original Gum – unused with original gum affected by sweating, glazing or mount disturbance; may not resemble the original gum.

unused = Unused without gum.

Ungummed = Unused without gum, as issued.

BLOCKS OR SHEETS AND THEIR GUM: Minor separations are the rule rather than the exception, in the case of blocks or sheets of any size. A few separations, around four perfs. per row, do not affect the value of a block or sheet and are not grounds for the return of a lot.

Charles E. Cwiakala
1527 S. Fairview Ave.
Park Ridge, IL 60068 U.S.A.
Tel/fax (847) 823-8747
Email: CECwiakala@aol.com

Purser & Associates
84 Webcower Rd., #2
Arlington, MA 02474 U.S.A.
Tel. (857) 928-5140
Fax: (781) 777-1023
Email: info@pursers.com

Jean-Claude Michaud
15 Briarwood Crescent
Halifax, NS B3M1P2 CANADA
Tel. (902)443-5912
Fax (902)445-5795
Email: jcm.ph@ns.sympatico.ca

Trevor Chinery
9 St. Laurence Way, Stanwick
Northamptonshire NN9 6QS
ENGLAND
Tel. (44) 1205 330 026
Fax (44) 1933 622 808
Email: TrevorTrilogy@aol.com

Frank Mandel
P.O. Box 157
New York, NY 10014 U.S.A.
Tel. (212)675-0819
Fax. (212) 366-6462
Email: busybird1@me.com

John Beddows
Box 24083
North Bay, ON P1B 0C7 CANADA
Tel. (705) 495-3134
Fax: (705) 495-3134
Email: jlw@onlink.net

Nick Martin
Angel House, Station Road
Lincolnshire, PE20 2JH
ENGLAND
Tel (44) 120-546-0968
Cel. (44) 0770 376 6477
Email: Nick@loveauctions.co.uk

Jochen Heddergott
Bauerstrasse 9, 80796
Munchen, GERMANY
Tel. (49) 089 272-1683
Fax (49) 089 272-1685
Email: mail@philagent.com

CATALOGUE VALUES: The final column shows the catalogue value of the lot.

ESTIMATED VALUES: If the estimated cash value is given, it is indicated by the abbreviation "Est. Cash Val.". It is used where the lot is large or where the actual value has little relation to the catalogue price. It represents the auctioneer's opinion of the MARKET value of a lot.

PLEASE NOTE – CREDIT CARDS and BANK FEES : A 3%

Convenience Fee will be charged to credit card and PayPal users and buyers must pay ALL bank fees for Wire transfers including those charged by Intermediary banks.

OVERSEAS BUYERS: We require that payment be made in U.S. dollars made payable on a U.S. bank.

BIDDING LEVELS

Up to \$ 150	\$5
\$150 - \$300	\$10
\$300 - \$600	\$25
\$600 - \$1,500	\$50
Over \$1,500	approx. 5%

Bids which do not conform to the above will be automatically reduced to the correct level.

BIDS BY TELEPHONE

- A) Reservations must be made at least 2 days prior to the sale.
- B) Any errors are the responsibility of the bidder.

BIDS BY FAX or E-MAIL

Must be received no later than 2 hours before the session commences.

And **MUST** be confirmed by a reply from a Harpers International representative.

Fax: 914.962.5885 E-Mail: bids@harmersInternational.com

VALUATION OF LOTS are available upon request.

GUM DESCRIPTION

Recognizing that there are occasional differences of opinion concerning gum nomenclature by various expert committees, for example, a stamp described as o.g. being certified as large part o.g. or even part o.g., this minor classification discrepancy alone is not sufficient grounds for return.

COVER CONDITION

Minor faults, including but not limited to file folds, not affecting stamps, small tears and some back flap damage have not been noted in the descriptions and are not grounds for return.

REGISTERING TO BID IN OUR SALE

Bidders must be registered to participate in Harpers International Auctions. Bidder registration forms are included with catalogues, are available on our web site, www.HarmersInternational.com or by request.

Trade references are required (no societies or clubs). Dealers must provide a copy of their Resale Certificate or shall be subject to ANY applicable sales tax.

ONLINE BIDDING

Live on-line bidding is available. We are not responsible for technology issues that may impact communication of bids.

EXTENSIONS AND EXPERTISING

Any lots placed on extension for expertising **MUST** be submitted by Harpers International, Inc.. Submission by the purchaser will nullify any extension request. Therefore, upon notification of purchase, please contact us with the lot numbers you wish submitted and the expert.

Auction Agents

SALE Number TEN

UNITED STATES, BRITISH COMMONWEALTH, FOREIGN & GREAT BRITAIN

The Albert Chambers British Commonwealth

The Thorns Craven "Old Time" U.S.

The A. Lerbs India & Heligoland

The "James Taylor" U.S. Plate Blocks

and the properties of eight other owners

**SALE To take place in New York City at:
The Collectors Club, 22 East 35th Street
Tuesday, July 23rd, 2019 beginning at 1:00 PM**

EXHIBITION OF LOTS

July 22nd & 23rd at the Collectors Club from 10am to 6pm or by Appointment

To be sold at Auction by



Office Located at: 1325 Echo Hill Path, Yorktown Hts, NY, 10598

Telephone: (212) 532.3700

Fax: (914) 962.5885

Email: info@HarmersInternational.com

Keith A. Harmer – Licensed Auctioneer, License Number 1345246

On all lots sold a commission of 18% on the hammer price will be payable by the buyer (additional internet bidding surcharge may apply refer to your bidding platform)

This firm subscribes to the ASDA code of ethics for auction firms.

Tuesday, 23rd July 2019
1:00 P.M.

UNITED STATES



1



2



3

- | | | | | |
|---|---|---|----------------|--------------|
| 1 | O | 5¢ red brown, Sheet Margin Copy, lovely faint pen-cross cancel and partial light red grid, large margins other sides, fresh bright colour. Just a lovely stamp, superb, Foundation Cert. (1986) (1).... | Est. Cash Val. | \$250 - 300. |
| 2 | ▲ | 5¢ red brown, red grid cancel, tied on piece, good margins all around, very fine, Foundation Certs. (1977, 2017)..... | (1) | \$375 |
| 3 | O | 5¢ orange brown, blue Philadelphia octagonal framed PAID cancel, brilliant color, good to large margins all around, extremely fine, Foundation Cert. (2017) | (1b) | \$800 |

1851 - 57 Issue



4



5



6



7



8



9

- | | | | | |
|---|---|---|------|----------|
| 4 | O | 1851, 3¢ orange brown, type I PAIR, large c.d.s. cancels, margins all round frameline barely touched at top right, still very fine..... | (10) | \$550 |
| 5 | ☆ | 1856, 5¢ red brown, unused, fresh bright color and paper, good margins to just clear at left and touching outer projection at bottom, "tiny repair" in top left margin only, a fine example of a very rare unused stamp, Foundation Cert. (2017)..... | (12) | \$11,000 |
| 6 | ☆ | 1851, 12¢ gray black, part o.g., large margins to just clear at bottom, almost very fine | (17) | \$6,250 |
| 7 | ☆ | 1851, 12¢ gray black, unused, good to large margins all round showing portion of adjoining stamp at top, very fine | (17) | \$2,500 |
| 8 | O | 1851, 12¢ gray black, crisp black circular grid cancel, good to large margins all around, extremely fine, Foundation Cert. (2007), P.S.E. Cert. (2007) | (17) | \$250 |
| 9 | O | 1851, 12¢ gray black, rare ORANGE c.d.s. plus blue and red cancels, large to just in at bottom, very rare, fine | (17) | \$400 |

1857 - 61 Issue

10	☆	1861, 1¢ blue, type I, part o.g., deep colour, well centred for the issue, fine(18)	\$2,100
11	☒	1857 - 61 1¢ blue, type I, THREE fine copies on cover (1 pulled perforations) cancelled by contiguous ms. "Cheney Penna Aug 2_ 1861" cancel on small white envelope to Lancaster, very rare. The stamps alone catalog \$750(18)	\$750
12	O	1857, 1¢ blue, type IV, unused, fresh and fine copy(23)	\$4,250
13	☆☆☆	1857, 1¢ blue, type V, Left Sheet Margin PAIR , left copy n.h., right copy l.h., almost very fine, Foundation Cert. (2017).....(24)	\$560 w/n.h. premium
14	☆	1857 3¢ rose, type I, o.g., fine, Weiss Cert.(2010).....(25)	\$2,750
15	O ☒	1857 5¢ bright red brown, VERTICAL SHEET MARGIN STRIP OF THREE , light NEW ORLEANS AUG 28, 1858 c.d.s. strikes, barely perceptible internal crease and faint perimeter staining only on reverse. A fine strip, Unpriced as a Strip., Weiss Cert. (2010), Balasse handstamp..... (28b)	\$6,900 as singles
16	O	5¢ orange brown, type II, lovely bright red cancel, bright true colour, well centred for this issue(30)	\$1,375
17	☆	1857, 10¢ green, type II, unused, fresh colour, almost very fine(32)	\$2,000
18	☒	1857-61 Used to Canada: 10¢ green, type IV Pos. 64L1, Outer line recut at top and bottom, fine copy, tied by DETROIT Mich. APR 27 1859 c.d.s. on tidy white envelope (top left corner repair) bearing red PAID in circle and matching UNITED STATES 6D oval, on reverse Windsor transit and TORONTO AP 29 59 receiver (34).....Est. Cash Val.	\$1,000 - 1,250

The most valuable of the Type IV recuts (catalog \$2,600 as stamp) and normal stamp catalog \$2,500



19	☆	1857, 12¢ black, Plate I TOP SHEET MARGIN COPY , full og., crisp deep colour, fine and impressive(36) \$1,750
20	P	1860, 24¢ gray lilac, imperforate proof on stamp paper , large to clear margins all round, almost very fine(37P5) \$1,500
21	☆	1860, 30¢ orange, recut at bottom (52LI) o.g. , strong colour and printing impression, almost very fine, Foundation Cert. (1979)..... (38) \$1,900
22	☆	1857-60 (1875 Reprint), 1¢ bright blue, ungummed as issued , well centered, reperfed, very fine appearance, Foundation Cert. (2017)..... (40) \$575



19



20



21



22

People collect stamps for many reasons

President Franklin Delano Roosevelt, the 32nd President of the United States, was born in 1882 and began collecting when he was eight years old. Henry Revell Harmer also began collecting around the same age, but Henry was born thirteen years earlier in 1869. To put these dates on a stamp perspective, in 1840 the "Penny Black" was issued, and the "U.S. 5 cent '47" emerged in 1847; there was plenty of material on the out there by the time both boys began collecting. Like most young men their age, regardless of the country you lived in, creed or socio-economic status, their collections were built through friends, relatives saving stamps from mail they received. Without the internet and Netflix movies on demand, stamps were the way most young people learned about exotic countries and history.

President Roosevelt used stamps as a way to escape the many pressures of office. Although in the business, Henry enjoyed the study of stamps and went on not only to sign the Roll of Distinguished Philatelist but to sire three generations (to date) of philatelist who serve the hobby as auctioneers. Henry felt that letting the market establish the value of a stamp through auctioning was the most honest way to sell a collection.

Stamp collecting is enjoyable in solitude, but it also has a social element. President Roosevelt spent some of his most enjoyable hours with his friend, James Aloysius Farley, whom he appointed as the 53rd Post Master General. The two men would talk about stamps and ...

continued on page 7

1861 Issue

23	☆	1861, 3¢ pink, o.g. hinge remnant, horizontal crease and a few short perfs, true colour a fine copy of this extremely rare stamp with gum, fine appearance..... (64)	\$14,000
24	P	1861, 3¢ rose Plate Proof PAIR, on ungummed stamp paper, very attractive, extremely fine. Previously 65c (65P5)	\$1,000
25	O	1861, 5¢ olive yellow, 1862 c.d.s., tiny closed tear between two perforations at top, well centred, fine, A.P.S. Cert. (2017)..... (67b)	\$4,750
26	☆	1862, 24¢ brown lilac, disturbed o.g., bright colour, perforations clear, fine..... (70a)	\$3,250
27	☆	1861, 24¢ violet, traces of original gum, tiny thin spot, short perforations at sides, a fine and presentable copy of an extremely rare stamp..... (70c)	\$35,000
28	O	1861, 24¢ violet, thin paper, blue cancel, few tiny faults, fine, PSAG Cert. (2017)..... (70c)	\$2,250
29	☆	1861, 30¢ orange, o.g. hinge remnant, deep rich colour and impression, perforations barely touch, impressive fine copy..... (71)	\$2,600
30	☆	1861, 30¢ orange, unused (regummed), excellent centering and bright crisp colour, almost very fine, Weiss Cert. (2008)..... (71)	\$950
31	☆	1861, 90¢ blue, redistributed o.g., one perforation barely touches at top, fine (72)	\$3,000

1861 - 66 Issue

32	☆☆+	1863, 2¢ black Irregular never hinged BLOCK OF FOUR, "Post Office Fresh" decent centering and fine (73)	\$3,770 with n.h. premium
33	☆	1866, 15¢ black, o.g. large hinge remnant, deep crisp printing, fine and very very rare, A.P.S. Cert (2005)..... (77)	\$4,750



THE "GRILLS"



34

- 34 ☆ 1867, 3¢ rose, A. grill, full o.g., incredibly intact perforations for the all over A Grill, only 2 or 3 short, distinctive strong grill, centering as good as one can expect for this hard to find issue, fine.....
..... (79) \$8,500

A great stamp.



36



37



35

- 35 ☒ 1867, 3¢ rose, C. grill, cancelled by cork on forwarded envelope bearing PHIL.A NOV 18 PA c.d.s. and BLOODY RUN (now Everett), first destination, to Ray's Hill (83) \$1,300
- 36 O 1867, 2¢ black, D. grill, neat grid cancel, centered to top left..... (84) \$4,250
- 37 O 1867, 3¢ rose, D. grill, neat segmented cork and partial c.d.s., fresh bright colour, exceptional centering for the grill issues, intense grill impression, extremely fine (85) \$1,000



38



39



40



41

- 38 ☆ 1867, 2¢ black, Z. grill, unused, deep colour, centred to top right..... (85B) \$6,750
- 39 O 1867, 3¢ rose, Z. grill, target cancel, decent centring, small thin spot, fine and very rare, Foundation Cert. (1986)..... (85C) \$3,250
- 40 O 1867, 12¢ intense black, Z. grill, cork cancel, perforations touch at right, fine..... (85E) \$2,400
- 41 ☆ 1867, 15¢ black, E. grill, unused, centred to bottom, Foundation Cert. (1993) (91) \$4,500



42



43



44



45



46



47



48

42	☆	1867, 1¢ blue, F. grill, full o.g., lush colour and good centering for the issue, most distinctive grill, almost very fine.....(92)	\$2,800
43	☆	1867, 5¢ brown, F. grill, o.g. hinge remnant, few short perforations, decent centering, fine(95)	\$3,250
44	☆	1867, 10¢ yellow green, F. grill, o.g., blue pen mark in bottom margin, some gum soaks in bottom perforations, fine, Suspected Ex Ward.....(96)	\$2,500
45	O	1867, 10¢ yellow green, F. grill, thin paper variety, light red and black cancels, extremely fine, Foundation Certs (2001 and 2007 Graded XF90)(96 var.)	\$675 as normal
46	☆	1867, 15¢ black, F. grill, unused, crisp colour and impression, quite good centering, almost very fine(98)	\$1,500
47	☆	1867, 24¢ gray lilac, F. grill, unused, fine for this rare stamp(99)	\$3,250
48	☆	30¢ orange, F. grill, part o.g., deep rich defined printing, typical centering for the grill issue, two small gum spots barely showing through on face, a fine copy, P.S.E. Cert. (2010)(100)	\$9,000

Continued from page 4.

their design for many hours. President Roosevelt died in 1945. In 1946 / 1947, Henry and my father, Bernard, sold FDR's collection here in New York. A few years ago we had the honour of selling the essays belonging to Alvin Hall, who served as the Director of the Bureau of Printing and Engraving from 1924 to 1954, who was a likely participant in these conversations with James Farley and President Roosevelt.

The Collectors' Club is a place to meet others who enjoy the many different aspects of stamps and postal history. In the back of our catalogue, you will find information about the Collector's Club. We are one of several fine auction houses that support the Club and the hobby. We encourage you to join the club, participate in the club activities, and to help get the younger generation, which we will define as anyone under fifty, involved in some aspect of the hobby.

Thank you and enjoy our sale,

The Harmer Family

1869 Issue

49	O	1869, 1¢ buff, truly an NRA clear black target cancel on a fine copy, exceptional presence (112),.....Est. Cash Val.	\$75 - 100
50	☆ ☆	1869, 2¢ brown, never hinged, fresh colour and gum, fine, Very rare., Foundation Cert. (2013) for block of 8(113)	\$1,450 for n.h. pre- mium
51	O	1869, 2¢ brown, distinctive used wide copy with INTERPANNEAU, margin one side and wide SE on other, creases, most interesting (113)Est. Cash Val.	\$60 - 80
52	O	1869, 3¢ ultramarine, GREEN cancel, centered, very fine(114)	\$475
53	☆	1869, 6¢ ultramarine, disturbed o.g., fine(115)	\$2,500
54	☒	Used to Canada: 1869, 6¢ ultramarine, tied by 4-ring target cancel on white envelope bearing NEW- ARK NJ SEP 10 c.d.s.(115)	\$475
55	☆	1869, 10¢ yellow, part o.g., great centering, exceptional grill, very fine(116)	\$1,850
56	☆	1869, 12¢ green, o.g., fresh and fine(117)	\$1,850

57	O	1869, 12¢ green, GREEN CANCELLATION, fresh colour, centered to right, fine copy, Foundation Cert. (1996)..... (117)	\$3,620
<i>A staggeringly rare cancellation 5x a Japan cancel, Almost 30x other rare cancellations. The highest premium in the 1869 Issue.</i>			

58	☆	1869, 15¢ brown & blue, type I, disturbed o.g., fine colours, well centred, perforations clear all round, a fine and very rare stamp with gum(118)	\$9,500
59	☆	1869, 15¢ brown & blue, type II, disturbed o.g., perforations barely touch frame-line at right, fine(119)	\$3,000
60	☆	1869, 15¢ brown & blue, type II, unused, fresh colours, large copy, truly insignificant pin hole, fine(119)	\$1,050
61	☆	1869, 24¢ green & violet, unused, fresh crisp colours and printing, perforations barely touch at right, fine(120)	\$2,600
62	O	1869, 24¢ green & violet, lightly cancelled, fine (120)	\$600
63	O	1869, 30¢ ultramarine & carmine, lightly cancelled, wonderful centering, tiny tear hidden in cancel at top not mentioned in cert., Foundation Cert. (2017), XF 90 (121)Est. Cash Val.	\$200 - 250
64	O	30¢ ultramarine & carmine, impressive Diamond Block cancel, centered, almost very fine (121)	\$400
65	O	1869, 30¢ ultramarine & carmine, cancelled by dated STEAMSHIP cancels, beautifully centered and fresh color, very fine..... (121)	\$450
66	O	1869, 90¢ carmine & black, cork cancel, wonderful centering, fresh color, reperfed at left, light crease, extremely fine appearance(122)	\$1,700
67	O	1869 (1875 Re-issue), 24¢ green & violet, lightly cancelled to view entire design, well centered and, very fine, P.S.E. Cert. (2011).....(130)	\$1,600

Far rarer cancelled than unused despite catalogue value.



Never confuse motion with action Benjamin Franklin

When bidding, confirm that you have the bid

and not the person beind you.

The auctioneer's word is final.



49



50



51



52



53



54



55



56



57



58



59



60



61



62



63



64



65



66



67



68 ex



69



70



71 ex

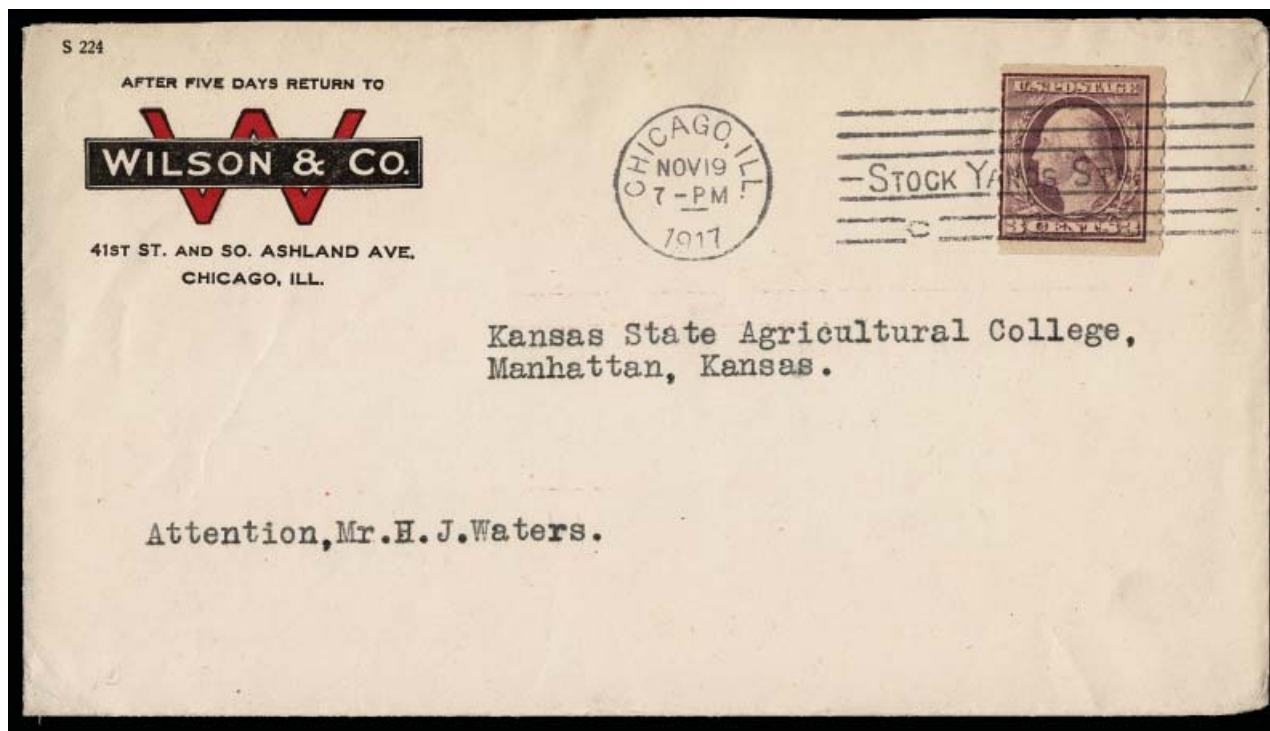


72

- | | | | | |
|----|----|---|----------------|---------------|
| 68 | ☆ | 1893, Columbian Exposition Issue, 1¢ to \$5 complete set, o.g. or unused or regummed, some decent centering on the high values, mixed condition all on original 1950's dealer lot cards (see Collections & Various for the collection) (230-245)..... | Est. Cash Val. | \$750 - 1,000 |
| 69 | ☆ | 1893, Columbian, \$1 salmon, o.g., almost very fine. With original 1990 invoice, Foundation Cert (1988) | (241) | \$1,000 |
| 70 | ☆ | 1893, Columbian, \$2 brown red, o.g., almost very fine. With original invoice from 1989..... | (242) | \$1,050 |
| 71 | ☆ | 1898, Trans-Mississippi, 1¢ to \$2 complete set, o.g. to unused to regummed, mixed centering and condition, all in original 1950's dealer list cards (see Collections & Various for the Collection) (285-293)..... | Est. Cash Val. | \$500 - 750 |
| 72 | ☆☆ | 1901, Pan-American, 4¢ deep red brown & black, never hinged, very fine | (296) | \$170 |
| 73 | O | 1910, 4¢ orange brown, Vertical Coil, perforated 12 horizontally, Incredibly Rare GUIDELINE PAIR, oval town cancel, almost very fine, P.S.E.Cert. (2007) | (350) | \$4,000 |

A great rarity.

83



Bluish Papers



- | | | | |
|----|---|---|---------|
| 74 | ★ | 1909, 5¢ blue, bluish paper, original gum, distinctive color, well centred for the issue, an almost very fine copy, P.S.E. Cert. (2013)..... (361) | \$5,750 |
| 75 | ★ | 1909, 6¢ red orange, bluish paper, o.g., small gum removal spot, almost very fine(362) | \$1,250 |
| 76 | ★ | 1909, 10¢ yellow, bluish paper, original gum, strong color for the 10c which is often washed out, good centering, almost very fine, APS Cert. (2003)(364) | \$1,600 |
| 77 | ★ | 1909, 15¢ pale ultramarine, bluish paper, lightly hinged, bright color, quite well centred, almost very fine (366) | \$1,250 |

- | | | | |
|----|-----|---|---------|
| 78 | ★ ★ | 1915, 50¢ violet, never hinged, very fine, A.P.S. Cert. (2017)(440) | \$1,300 |
|----|-----|---|---------|

Coils

- | | | | |
|----|-----|---|---------|
| 79 | ★ ★ | 1914, 5¢ blue, Horizontal Flat Plate Coil PAIR, never hinged, fine (447) | \$525 |
| 80 | ★ ★ | 1914, 2¢ carmine rose, type I, Horizontal Rotary Coil, never hinged, almost very fine(453) | \$1,450 |
| 81 | ○ | 1914, 2¢ carmine rose, type I, Horizontal Rotary Coil GUIDELINE PAIR, lightly cancelled, corner crease, fine to very fine(453) | \$600 |
| 82 | ★ ★ | 2¢ red, type II, Horizontal Rotary Coil PAIR, n.h., very fine(454) | \$360 |
| 83 | ☒ | 1916, 3¢ violet, Horizontal Rotary Coil, tied on neat WILSON & CO bi-colour advertising envelope by neat CHICAGO NOV 19 1917 duplex, to Kansas(456) | \$250 |





84



85



87



86



88



90



89 ex.

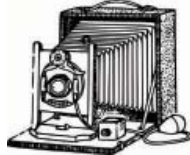
- | | | | |
|----|-----|--|-------------------------|
| 84 | ☆☆+ | 1917, 2¢ deep rose, type Ia, Right Plate Block of SIX, never hinged, fresh bright colour and gum, fine, P.S.E. Cert (2014)(500) | \$3,750 |
| 85 | ☆☆+ | 1917, 5¢ rose, Double Error in BLOCK of 12, never hinged, one 1c o.g. and crease through top row, very fine(505) | \$1,250 for errors only |
| 86 | O | 1917, 11¢ light green, Perforation 10 at top, black cancellation, "small creases", a fine copy, Foundation Cert. (2015), A.P.S. Cert. (1985)..... (511a) | \$3,750 |
| 87 | ☆☆+ | 1917, \$1 violet brown PLATE BLOCK of SIX, never hinged, selvage possibly a touch reduced, very fine(518) | \$2,100 |
| 88 | O | 1917, \$1 deep brown, light c.d.s. strikes off-centred but far rarer than the unused examples, fine, Foundation Cert. (1998)..... (518b) | \$1,250 |
| 89 | ☆☆+ | 1918 -1920, 1¢ emerald Blocks of 16,16 and 36 (68 total) respectively n.h., n.h., disturbed o.g., fine to very fine(525) | \$1,190 |

Plate Blocks

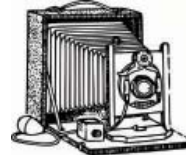


91

Scans of majority of our lots are viewable online



92



In most cases we include the flip side.

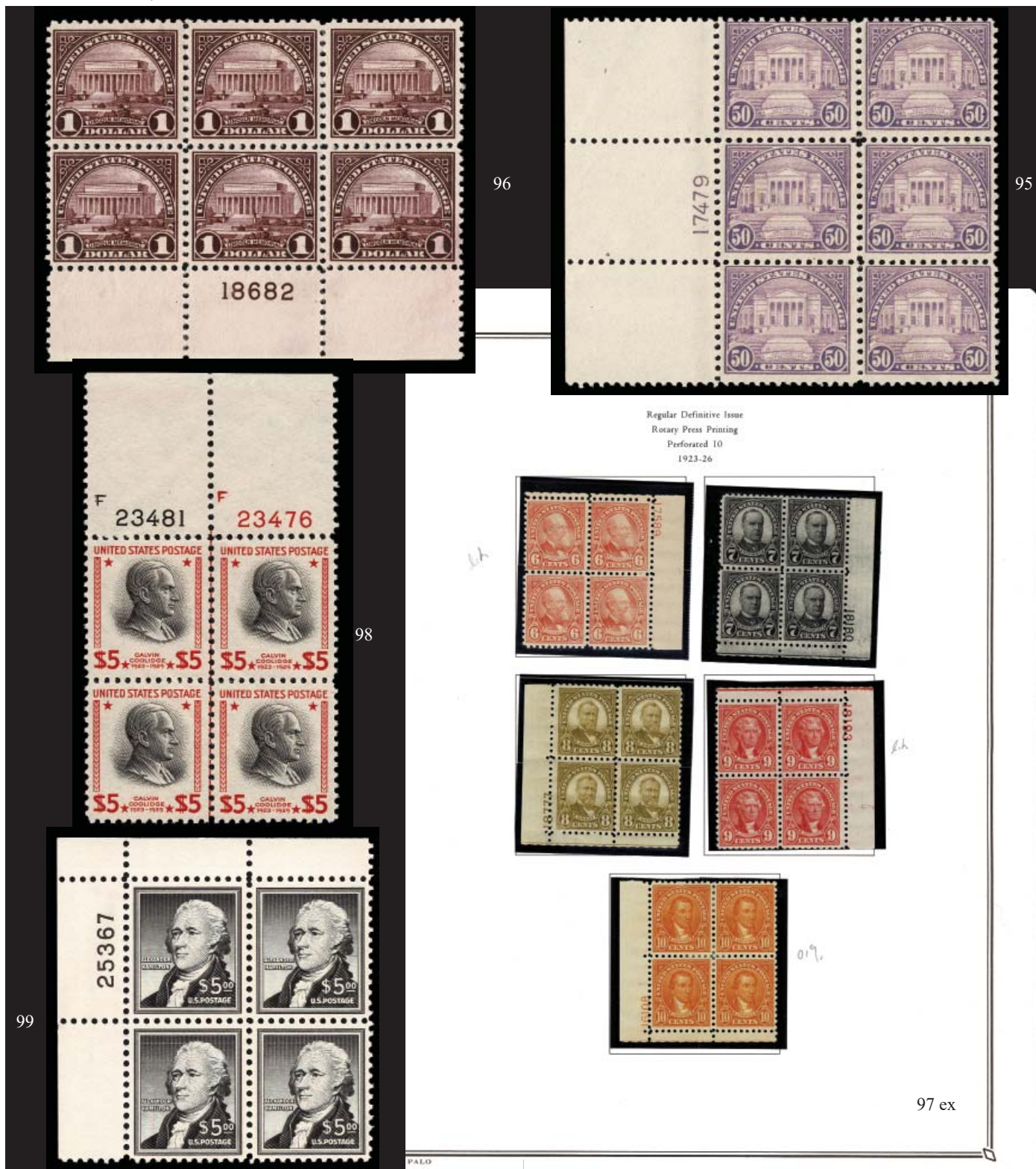
93



94



90	☆☆+	1919 3¢ violet PLATE BLOCK of SIX, never hinged, very fine (537)	\$350
91	☆☆+	1923, 4¢ yellow brown, PLATE BLOCK of SIX, never hinged, very fine(556)	\$375
92	☆☆+	1922, 6¢ red orange, PLATE BLOCK OF SIX, never hinged, very fine(558)	\$600
93	☆☆+	1922, 25¢ yellow green, PLATE BLOCK OF SIX, never hinged, few gum skips, very fine(568)	\$425
94	☆☆+	1923, 30¢ olive brown, PLATE BLOCK OF SIX, never hinged, fine to very fine(569)	\$475



- 95 ☆☆☆ 1922, 50c lilac, PLATE BLOCK OF SIX, 4 copies n.h., 2 copies o.g., stamps very fine and fine(570) \$550
- 96 ☆☆☆ 1923, \$1 violet black, PLATE BLOCK OF SIX, never hinged, gum wrinkles, almost very fine.....(571) \$525
- 97 ☆☆☆ 1923-26 Perforated 1c to 10c PLATE BLOCKS OF FOUR, never hinged except 10c, 9c and 3c, centering ranges from perfs cut in to very fine. A fresh and pristine hard to find set (581-91) \$3,335
- 98 ☆☆☆ 1938, \$5 Presidential carmine & black, PLATE BLOCK OF FOUR, never hinged, very fine(834) \$350
- 99 ☆☆☆ 1956, \$5 Hamilton, PLATE BLOCK OF FOUR, never hinged, very fine (1053) \$220

BACK-OF-THE-BOOK

Air Post

- 100 ☆☆☆ 1930, Graf Zeppelin complete set of three, 65c, \$1.30 appearance n.h. but brilliantly de-hinged, \$2.60 n.h., very fine(C13-C15) \$1,480
- 101 ☐ 1905 First Wake Island Survey Flight, legal sized envelope with appropriate black cachet, bearing Scott #720 tied by appropriate U.S.S. NITRO MAR 8 1935 ENROUTE duplex and "J.S. Johnson" (Pilot) signature - Very historical Est. Cash Val. \$200 - 250
- 102 ☐ 1944-45, US #C25 6¢ Transport, "R.F." overprint Type b, tied on unaddressed envelope by POSTENAVALE 11-10-44 c.d.s.(CM2) \$550
- 103 ☆☆☆ Special Delivery, 1917, 10¢ ultramarine, Left Plate Block of EIGHT with Imprint, never hinged, very fine. The two other shades of the issue (grey violet and blue) price their Plate Blocks of Eight at \$2500 and \$2850 respectively. (E11) Est. Cash Val. \$600 - 800
Obviously very rare.



103



100



Detailed photos are
online.

101





104

- 104 ☐ **BROWNE'S & CO'S CITY POST 1852-55, 2¢ black, margin about three sides showing adjacent stamps at bottom used on full folded letter bearing U.S. #11 (three margins) tied by a blue CIN-CINNATI NOV 17 c.d.s., date-lined "Nov 4" addressed to Centerville, Foundation Cert. (1976)**
.....(29L2) \$4,500
- Documented in five major auctions. Very rare. No example was in the Golden Sale.*

Revenues



105



106



107

- 105 O **1863, \$25 Mortgage, Imperforate, neat clear manuscript cancel "March 1st 1865 for C.S. Co.", enormous to large margins all around, deep rich colour, Foundation Cert. (2018)(R100a) \$2,700**
A brilliant stamp.
- 106 O **\$50 U.S. Internal Revenue, Perforated, PAIR, light "1870" manuscript cancel deep rich colour and excellent centering (no double perfs.) a very fine and rare multiple, Foundation Cert. (2018), P.S.E. Cert. (2005) (R101c) \$450**
- 107 O **Documentary, 1871, Second Issue, \$25 blue & black, light manuscript cancel, no cuts nice centering, double perforations at bottom, faint creasing, fine (R130) \$950**

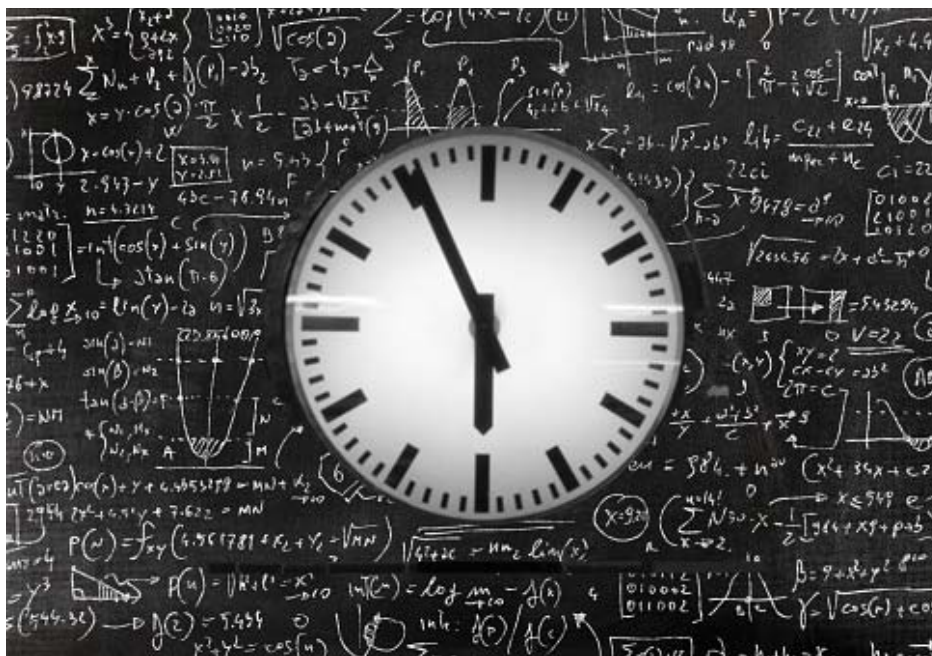
Hawaii



109

108

- | | | | |
|-----|----|---|-------------|
| 108 | ☒ | Used to New York: 1857-61 12¢ black, plate III, fine, tied by pen stroke on envelope (rough opening at top) bearing red HONOLULU NOV 9 (1861) U.S. POSTAGE PAID c.d.s. (origin) and black SAN FRANCISCO NOV 28 1861 transit to Brooklyn (36B),.....Est. Cash Val. | \$700 - 800 |
| 109 | ☆☆ | 1886, 2¢ orange vermilion, Reproduction, never hinged, light hinge mark in selvage only, extremely fine, Foundation Cert. (1976) photocopy of block of four..... (50) | \$275 |



EXTENSIONS

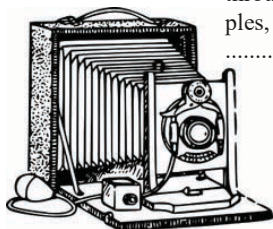
Any lots placed on extension for expertising MUST be submitted by Harmers International, Inc. Submission by the purchaser may nullify any extension request. Notify us of lot number and expert.

U.S. COLLECTIONS & VARIOUS



110 ex

- | | | | |
|-----|------|--|-----------------|
| 110 | ☆ ○ | 19th & 20th Century Collection in Scott National Hingeless Album; Sporadically complete in some sections with inclinations to Regular issues usual early used sets, some grills, 1869's but includes an unused #21 with faults and a used #142, Columbians used to \$2.00, Trans-Mississippi to o.g. \$1.00, 1920's on popular sets lots of duplicates. This seems to be an old time collection improved and remounted by a second collector. Condition as would be expected but worth the look. Some not mounted.....Est. Cash Val. | \$6,000 - 8,000 |
| 111 | ☆ ○ | 19th & early 20th Century 251 stamps each in original 1950's dealer lot cards, All stamps either identified or misidentified includes 1847's to 1930's used or o.g. or proof or perfed proofs, probably some cleaned. Caution should be used BUT there are some rarities. Mixed condition. See the entire group on the web. Also see Columbian and Trans-Mississippi sets elsewhere in the catalogEst. Cash Val. | \$4,000 - 6,000 |
| 112 | ☆☆/☆ | 20th Century. A fine collection of hundreds of n.h. and o.g. stamps, in 2 White Ace albums (Commemoratives & Air Post) Including Columbian to 50¢ (1 Certificate), Trans-Mississippi to 10¢ (1 Certificate), Pan America, Louisiana, Lincolns's (369 Cert), usual sets thereafter, White Plains, Airs complete to 1979 except Zeps (elsewhere in catalog) better centering than most collections and a lot of n.h.....Est. Cash Val. | \$2,000 - 2,500 |
| 113 | ☆ ○ | 19th & 20th Century Collection of several hundred, o.g. and used stamps on Scott album pages, some decent earlies including 1861 and 1869 issues, Columbians to 50¢, Trans Mississippi to 10¢. Used, o.g. from 1920's on, including Airs, useful material.....Est. Cash Val. | \$1,250 - 1,750 |
| 114 | ☆○ ☐ | Collection of many hundred in National Album 1850's to 1970, earlies used to about 1930's, o.g. thereafter, some good sets but mixed, includes usual \$5.00 sets 1930's to 70's, Airs with 2nd issue o.g. and used Zeps, nice back of the book with RF covers, Parcel Post complete o.g., some Revenues, generally very clean collection Est. Cash Val. | \$1,000 - 1,500 |
| 115 | ☆ ○ | 19th and 20th Century, A miscellaneous accumulation comprising 5 albums or stock books, album pages and loose in small box, thousands of stamps, actually extensive early Revenues, and useful issues in the albums. Worth the effort to organize.Est. Cash Val. | \$750 - 1,000 |
| 116 | ☆☆/☆ | 20th Century - A useful and select balance of about 100 items, on dealer cards and 21 name auction lot sheets mostly Simmy also Bennett, Rieger etc. Vast majority n.h. and excellent centering many gradeable. No real high values, but few cheap. Singles, blocks, strips, Back-of-the Book. Worth the effort, Est. Cash Val. | \$3,000 - 4,000 |
| 117 | ☆☆☐ | Plate Blocks 1901 to 1930's; A superior collection of hundreds, neatly mounted in high-class PALO ring album, Regular Issues, Commems, Airs, Special Delivery, Dues, many better issues, partial Liberty, K-N, etc.), and part issues, superior condition, some early partial separations, some ingenious hinge removals, but very nice. Catalogue value to 1930's about \$14,000, later not counted, with some assumed to be hinged rather than n.h. Great Potential Est. Cash Val. | \$2,500 - 3,000 |
| 118 | ☆○ ☐ | The remainder collection of primarily hinged plate blocks, in Scott album from 1924 Huguenot Issue to 1950's PLUS a decent selection of 1930's FDC from 1930's all part of the Alvin Hall estate..... Est. Cash Val. | \$250 - 300 |
| 119 | ○ ☐ | 1911 to 1992, group of 12 used Blocks of Four, 382,403,404,538,540(2),2394,2482,2544,2590(2),2592, some very rare multiples, basically fault free..... | \$1,000 about |
| 120 | ○ | Revenues; 19th and 20th Century Collection, of many hundred on Scott pages starting with R1a through Stock Transfers, many imperfs with R102a (repaired), Perfed are well represented with multiples, on and on it goes. Catalogue Value probably about \$15,000 not including the \$200.00Est. Cash Val. | \$2,000 - 2,500 |



PLEASE VISIT OUR ON-LINE CATALOG FOR MANY PHOTOGRAPHS
OF COLLECTIONS AND GROUPINGS.
WE WELCOME CALLS FOR SPECIFIC QUESTIONS.

- 121 ☆ O **Back-of-the-Book: 19th & 20th Century Collection of several hundred**, on Scott National pages. Revenues quite decent with perforated values to \$5, also some Dues, Officials, Newspapers, here and there useful itemsEst. Cash Val. \$750 - 1,000
- 122 O **Philippines United States Occupation. Early 1900's Collection of over 1000 mostly used stamps**, in stock book including Regular Issues, surcharges, Airs, Officials, Revenues, Japan Occupation, great variety of cancels. Fun to play with. Est. Cash Val. \$75 - 100
- 123 ☆☆☆ **Revenues: Hunting Permit Stamps; 1970's to 2000, Pristine Collection of 89 never hinged items**, primarily Plate Blocks, neatly mounted in high class PALO ring binder, includes singles, souvenir sheets, die cuts, some signed, Juniors, all cataloging \$2600 PLUS plate blocks \$4400 for a total of \$7000, very fine (RW3b on) Est. Cash Val. \$600 - 800

Postal History Collections

- 124 ☒ **Patriotic Collection of 109, A commendable dealer's stock of 109 in one smaller cover book comprising Civil War 61 unused 4 used; Spanish and turn of the century 7, WW1 1, WWII 26. Multicoloured, better designers, almost all WWII are Fluegel and Staele, all are priced with some descriptions. Far better than the normal. See website for photosEst. Cash Val. \$3,000 - 4,000**
- 125 ☒ **Wars: Military and Patriotics; 34 covers**, comprising Civil, 11 used and unused Patriotics; Spanish 3; one A-bomb test; one 1880's "Marine Corps of the City of New York" all over; rest WWII, V-mail, POW etc. Good variety Est. Cash Val. \$300 - 500.
- 126 ☒ **20th Century Early to 1930's**, A varied assortment of the popular regular issues, Bureaus, Washington-Franklin through to Prexy's, 104 covers all sizes, picture postcards, tags (Prexy \$1, \$2, \$5), also with labels, great destinations plus 12 US reply cards from Russia, something for everyone. See online for photos Est. Cash Val. \$500 - 750
- 127 ☒ **Postal History Collections and Various Classics - 19th Century 1850's on, 52 covers** including stampless early frankings, some very nice advertising, few to Europe., EnjoyEst. Cash Val. \$200 - 250
- 128 ☒ **Early 20th Century, Assortment of 25+ covers and documents** comprising Air from 1918 on (5), W-Franklin (3), Back of the Book (5), stampless (2) plus others, very esoteric Est. Cash Val. \$250 - 300
- 129 ☒ **Back-of-the-Book, 58 covers and cards**, including 30 Officials, 2 Parcel Post, 3 Special Delivery/Handling, 4 Expresses, 2 1850's on photos, 1 Cuba, 2 Hawaii, 2 Revenues and 32 used and unused stationery. Great varietyEst. Cash Val. \$300 - 500
- 130 ☒ **Air Posts: 30 covers comprising 9 Zeppelins**, including C18; 4 "Bremen"; one crash, 4 suspended, 15 assorted from 1920's to 1940's including additional Canada, France and C.Z. frankings, great combination of issues. Worth inspectionEst. Cash Val. \$300 - 350
- 131 ☒ **U.S. Zeppelin Flights: 10 Covers and 2 PPC**, bearing various colorful air post and regular issue frankings, 9 1928 & 1929; 2 1933; 1 1936; including one with C4-6 plus 10 other stamps; 2 C18 covers bearing pairs plus other stamps. Fabulous and showyEst. Cash Val. \$350 - 400

In an Industry
where
Tradition Matters ...



Keith A. Harmer
1945



Brandon J. Harmer
1993 -



BRITISH COMMONWEALTH

132	O	Ascension: 1924, Badge of the Colony, ½d-3s complete , light cancels, fine to very fine. SG 10/20 £600. (10-21) \$712
Australian States		
133	O	New South Wales: 1850, Sydney View, 1d reddish rose, plate I, yellowish paper , indistinct grid cancel, good margins all around, very fine. SG 3 £475(1) \$725
134	O	New South Wales: 1850, Sydney View, 1d deep carmine, plate I re-engraved, yellowish paper , grid cancel, good to large margins all around, rich colour, very fine. SG 8 £375(2) \$600
135	O	New South Wales: 1850, Sydney View, 1d dull carmine, plate I re-engraved, yellowish paper, hill unshaded , lightly cancelled, very fine. SG 8b £750 (2f) \$925
136	O	New South Wales: 1850, Sydney View, 1d crimson lake, plate I re-engraved, bluish paper, grid cancel , deep color, large margins all around, extremely fine. SG 9(2n) \$750
137	★ ★	New South Wales: 1894, Queen Victoria, 10s violet & claret, perf 11 , never hinged, fresh, well centred, extremely fine. SG 277a £425(108Bc) \$525
138	O	South Australia: 1855, Queen Victoria (London Print), 6d deep blue, PAIR, circle in grid cancel , good to large margins all around, very fine. SG 3 £340 as singles(3) singles \$400 as singles
“Van Diemen’s Land” --- Tasmania		
139	O	Tasmania: 1853, “Van Diemen’s Land”, 4d orange, plate I, 2nd state, crisp “68” in grid cancel , good to very large margins all around, insignificant natural paper translucency not showing on paper surface, very fine. SG 8 £450(2a) \$425
140	★★★/★	Tasmania: 1873, Queen Victoria “Chalon Head”, 1s brown red, perf 11½, Block of 4, 2 n.h., 2 l.h. , typical crackly gum, very fine. SG 140 £1,300 as singles (34d) singles \$1,300 as singles
<i>An incredibly rare multiple.</i>		
141	★	Tasmania: 1871, Queen Victoria, 5s purple, perf 11½ , lightly hinged, perforations clear all around, very fine. SG 149 £350(59d) \$350
142	O	Western Australia: 1883, Swan (engraved), 1d yellow ocher, perf 12 x 14 , lovely crisp “14” in grid cancel, perfect centering and brilliant colour, extremely fine, Brandon Cert. (1998). SG 81 £170 (54) \$300
143	★	Bahamas: 1861, Queen Victoria, 4d dull rose, rough perf 14 to 16, part o.g., fresh bright colour, almost very fine for these issues and very rare with gum, Signed H. Block. SG 5 £1,400 (3) \$1,800
144	O	Barbados: 1860, “Britannia” (1d) blue, pin-perf 12½, light “1” in grid cancel , natural straight edge at top, perforations almost complete other three sides clear of design, fine. SG 16a £1,600(12A) \$1,750
145	★	Basutoland: 1933, King George V, ½d-10s complete , lightly hinged, fine to very fine. SG 1/10 £364 as single(1-10) \$368
Bechuanaland		
146	★	1885-87, “British Bechuanaland” on Cape of Good Hope complete set of 8 to 1sh , o.g. some hinge remnants, fine to very fine. SG 1-8 £863 (1-9) \$885
147	O	Bechuanaland: 1888, Queen Victoria, £1 lilac & black, light cancel , “slightly discoloured” which is harsh, ex Major General Sir E. Hakewill Smith, Royal Cert. (1967). SG 20 £800(21) \$900
148	O	Bechuanaland: 1888, “Bechuanaland Protectorate” on Great Britain 2s6d green & black , neat c.d.s. “soiled and colours affected by water” harsh, fine and very rare used, Royal Cert (1976) SG 48 £950 (56) \$1,100
149	★	Bechuanaland Protectorate; 1932, King George V ½d-10s complete , o.g., fine to very fine. SG 99/110 £500(105-116) \$623
150	O	Bechuanaland Protectorate; 1932, King George V ½d-10s complete, neat cancels , fine to very fine. SG 99/110 £600(105-116) \$722
Bermuda		
151	★	Bermuda; 1939, King George VI, 5s pale green & red on yellow , perf 14, chalky paper, l.h., almost very fine. Scott 125a var.....SG 118a £375
152	★	Bermuda; 1942, King George VI, 5s dull green & red on yellow, perf 14 ¼ line, chalky paper , l.h., very fine. Scott 125a var.....SG 118b £300



132



133



134



135



136



137



138



139



142



143



144



140



141



145 ex



146 ex



147



148 ex



149 ex



150 ex



151



152

LOOKING TO ENLARGE IMAGES ..GO TO OUR WEBSITE
HARMERSINTERNATIONAL.COM



British Central Africa

- 153 ☆ **British Central Africa; 1891, "B.C.A." on Rhodesia £2 rose red, part o.g., very fine. SG 15 £1,400 ...**
.....(15) **\$1,400**



154

- 154 ☆ **British Central Africa; 1895, Arms of the Protectorate, £10 black & orange vermillion, unused (regummed), very fine, B.P.A. Cert. (1994). SG 30 £8,000(30) \$8,500**

- 155 ☆ **British Central Africa; 1896, Arms of the Protectorate, £1 black & blue, o.g., very fine. SG 40 £1,200(40) \$1,200**

- 156 S **British Central Africa; 1903-04, King Edward VII, £10 gray & blue, overprinted "Specimen", part o.g., very fine. SG 67s £500..... (69S) \$500**

British East Africa

- 157 ☆ **British East Africa; 1890, 4a on Great Britain 5d dull purple & blue, o.g., fine. SG 3 £600(3) \$600**

- 158 ☆ **British East Africa; 1890, Arms of the Company, Set of 17 ½a-5r complete, Plus extra 41/2a used and 8a green o.g., fine to very fine. SG 4/30, 11/19 £550(14-30, 20a) \$780**

- 159 ☆ O **British East Africa, 1890-95, Arms of the Company, useful group of 2 o.g. and 3 used, 1r, 4a, 2a, 5a, 8a, fine to very fine. SG 15, 38 o.g., 25,40,42 £625..... (between 26 and 47) \$715**

- 160 ☆ O **1897, "British East Africa" on Zanzibar ½a-7½a complete, one o.g., the others used, fine to very fine. SG 80/5 £625(88-93) \$785**

- 161 ☆ **British East Africa; 1901 1r bright ultramarine, o.g. hinge remnant, very rare colour, very fine. SG 92b £550(102b) \$425**

- 162 ☆ **British East Africa; 1897, Queen Victoria, 2r to 5r, o.g. hinge remnants, very fine. SG 93-96 £1,280(103-106) \$1,270**

- 163 ☆ **British East Africa; 1897, Queen Victoria, 20r pale green, o.g. hinge remnant, almost very fine. SG 98 £1,200(108) \$1,200**



164

- 164 ☆ **British East Africa; 1897, Queen Victoria, 50r mauve, o.g. hinge remnant, fine. SG 99 £2,500 ..(109) \$2,500**



165



166

- 165 O **British Guiana; 1857-59, Seal of the Colony, 1¢ dull red, with line above value, type C, light neat DEMERARA 60 c.d.s., good to close margins all round, obvious wide spacing between N-T, fine, rare. SG 16 £2,500 (9b) \$2,750**

- 166 O **British Guiana; 1862, Local Typeset Issue, 4¢ black on blue, c.d.s. cancel, fault free copy, good to large margins close at lower left, roulettes trimmed as typical for this issue, fine. SG 124 £1,400 (41) \$1,400**



153



155



156



160



157



158 ex



161



162 ex



163



159 ex



167



168 ex



169 ex



170 ex



171 ex

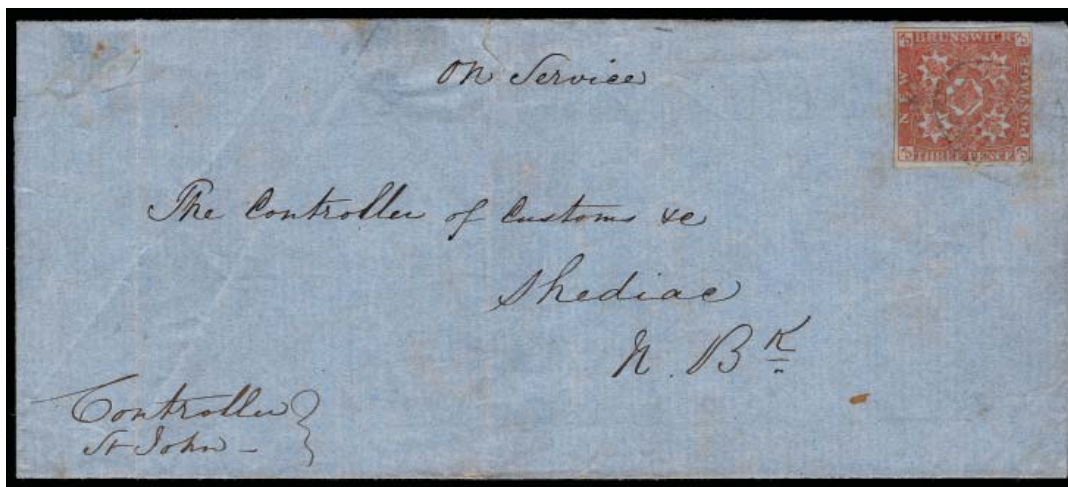
- 167 ☆ ☆ Brunei; 1910 \$25 black on red, never hinged, very fine. SG 48 £650 as hinged(39) \$1,500 as nh pro rata


Burma

- 168 ☆ Burma; 1937 King George V Definitives Set of 18 to 25r, l.h. mostly high values generally very fine. £3,019 as singles
Scott (1-18)..... SG 1-18
- 169 ☆ ☆ ☆ Burma; 1937 King George V Definitives Set of 17 3p to 10r, never hinged or lightly hinged, 1r, 2r n.h., \$300
very fine to extremely fine. SG 1-16 £348 (1-16)
- 170 ☆ 1937 Burma Service overprint on King George V Definitives Set of 14 3p to 10r, mostly lightly £1,148 as
hinged, generally very fine. Scott (O1-14)SG O1-14 singles
- 171 ☆ 1937 Burma Service overprint on King George V Definitives Set of 14, 3p to 10r, l.h. and o.g. gener- £1,148 as
ally very fine. Scott (O1-14)SG O1-14 singles


BRITISH NORTH AMERICA

New Brunswick



- 172  **1851, 3d red, good margins all around**, very fine, tied probably "1" in grid on folded letter, some cover creases well clear of stamp, on reverse ST JOHN DE 1858 c.d.s. and SHEDIAC receiver. SG 2 £700(1) \$950



- 173  **1851, 6d olive yellow, BISECTED**, good and large margins, very fine, tied by numeral grid "31" (Sussex Vale) on bluish folded letter (missing back lower flap) and bearing on reverse Sussex Vale M19 1857 origin and HAMPTON FERRY MY 20 1857 receiver c.d.s.'s, Ex Brouse, Dale, Gratton Cert.(2006). SG 4b £3,000(2b) \$3,500



174




176



175

- 174 O 1857 1 shilling reddish mauve, light grid cancel, good to margins at places, fresh colour, faults, useful space filler or for donation. SG 5 £4,500 (6) \$5,000

- 175  1851-60, 1s deep red violet, margins all round, just touching at bottom, fine, tied by numeral grid "1" on Registered folded letter sheet (some reinforcing) bearing large "6" and "Reg 436" in crayon, on reverse St John MY 3 1855 origin, DIGBY transit and YARMOUTH MY 5 1855 receiver, Ex. Jephcott, Brassler, Neville Jones, Wilkinson, Greene Cert.(1987) and Greene handstamp. SG 5 £13,500(3) \$11,500

One of only three 1 shilling covers used internally in New Brunswick.

- 176 O 1860, 5d violet brown, light grid cancel, good margins all around, very fine. Richter handstamp, Greene Cert. (2018).. Scott(12A) SG 13 £400

COVER CONDITION

Minor faults including, but not limited to, file folds not affecting stamps, small tears and some backflap damage have not been noted in the descriptions of this catalogue and are not grounds for returns.

Nova Scotia



- 177 ☐ Used to Medford, Mass; 1851, 6d yellow green, margins all round, just in at bottom right tied by indistinct numeral grid on folded letter bearing blue New Brunswick and PAID 10 handstamps, on reverse TATAMAGOUCHE SP 5 1854, AMHERST and ST JOHN SP 8 1854 transits, Robineau Cert.(1971), Calves handstamp. SG 5 £2,200(4) \$1,600



- 178 ☐ 1851, 6d yellow green, BISECTED, good margins both sides very fine, tied by indistinct cancel on envelope bearing on reverse PICTOU JU 21 1860 origin c.d.s. and WILLAM receiver. Attractive. Greene Cert. (2006). SG 5a £3,250(4a) \$4,500



- 179 ☐ 1851, 6d yellow green, BISECTED, one margin, tied by indistinct grid on envelope (tear at top), bearing on reverse LOWER HORTON SP 19 1860 origin (?) and KENTVILLE SE 19 1860 receiver, Gratton Cert. (2010). SG 5a £3,250.....(4a) \$4,500



- 180 ☐ Money Letter Mail; 1851, 6d yellow green and 3d dark blue, mostly margins, tied by indistinct grid to manila envelope (trimmed at top) bearing ms. "Money Letter mail: and "£14", on reverse BRIDGETOWN AP 23 1857 c.d.s. and Halifax AP 27 1857 oval receiver, Ex. Chaplin, Wilkinson, Greene Cert.(2011) (4,3)Est. Cash Val. \$750 - 1,000
We have found no other example of a Money Letter in the Pence Issue.



- 181 ☐ 1860-63, 10¢ vermilion, BISECTED, tied by oval grid on petite envelope bearing ms “On Service”, on reverse ms. “Rec 17/11/61”, Royal Cert. (1947) (12b) \$1,200



GUM DESCRIPTION

Recognizing that there are occasional differences of opinion concerning gum nomenclature by various expert committees, for example, a stamp described as o.g. being certified as large part o.g. or even part o.g., this minor classification discrepancy alone is not sufficient grounds for return.

CANADA



182



183



184




186

- 182 P 1851, 6d slate violet, proof on laid paper, SPECIMEN in red vertically at right, extremely fine (2P)...
.....Est. Cash Val. \$100 - 150
- 183 O 1851, Prince Albert, 6d slate violet, laid paper, very rare light RED target cancel, good margins
three sides to just into frame-line, vergè line, fine and rare, Greene Cert. (2017). SG 2 £1,300(2) \$1,650
- 184 O 1855, Prince Albert, 6d greenish gray, indistinct target cancels, absolutely enormous margins all
round, two light horizontal creases not mentioned in certificate, superb appearance, Gratton Cert. (2017).
SG 10 £1,200(5b) \$1,200



185

- 185  Used to England: 1855, Jacques Cartier, 10d blue, good to large margins all round, very fine, tied
by indistinct target cancel to neat white envelope (small tear) bearing red PAID LIVERPOOL
PACKET and origin c.d.s.'s, on reverse MONTREAL JU 2 1859 transit, and WILLETS COMBE
JU 6 1859 receiver, Foundation Cert. (1977) in the name of Andrew Levitt Inc. with their pricing of
"6500". SG 15 £3,600(7) \$3,250

- 186 O 1857, Queen Victoria, 7½d green, partial 4-ring cancel, large to ample margins all around, almost very
fine. SG 12 £2,500(9) \$3,500



187

- 187 O 1857, Prince Albert, 6d reddish purple, very thick soft wove paper, light 4-ring cancel, good to well clear margins all around, thin (not mentioned in cert.), very fine appearance, Greene Cert. (2017). SG 23 £4,000 (10) \$7,500
- Very rare.*



188



190



189

- 188 ☆ 1868, Large Queen, 1¢ yellow orange, unused, centered, extremely fine. SG 56a £1,100(23) \$1,750
- 189 ☆☆/
 ☆⊕ Mid 1800's Small Queen, 3¢ orange red Perf 12, mint block of TWENTY (5x4), with full original gum, hinged only on top stamps, fine. There is a light horizontal crease across third row, and light black adhesion on many stamps, still a lovely appearing block, and certainly one of the largest of this shade., Greene Cert. (2016)(37) \$3,500
- 190 ☆ 1897, Queen Victoria Jubilee, \$1 lake, lightly hinged, fresh bright colour, almost very fine(61) \$1,000



191 ex



192



193

- 191 ☆☆☆ 1923, King George V “Admiral”, SIX select BLOCKS OF FOUR, comprising 1¢ green, wet printing, 2¢ green dry print, 3¢ brown dry print, 3¢ carmine, wet print, 7¢ yellow ocher, wet printing, 10¢ light blue, dry printing, never hinged fine to very fine.....(Unitrade 104,105,108, 109, 113, 117iii) C\$2,928.
- 192 P 1935, 50¢ Victoria Parliament Trial Colour Proof in Deep Blue, on India paper, with CBN & Co. imprint plus plate number at bottom, extremely fine (226DP).....Est. Cash Val. \$700 - 800
- 193 ☆☆☆/☆☆ Special Delivery, 1898, 10¢ yellowish green Sheet Margin Plate Block of FOUR, without shading in value tablet, bottom two stamps never hinged. Partial plate 1 inscription on top selvage, alongside a crossed-out printing order number, very fine.Unitrade E1ii C\$1,600

CAPE OF GOOD HOPE



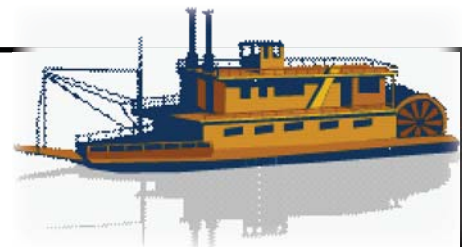
194



195

- 194 O Cape of Good Hope; 1861 “Wood Block”, 1d carmine, good to clear margins all around, superb strike of “C/GH” cancel, extremely fine, Brandon Cert. (2017). SG 13a £3,500.....(7a) \$4,000
- 195 O 1863-64 “Triangular”, De La Rue printing, 1s bright emerald green, light grid cancel, enormous margins to frame-line barely touched at right, almost very fine. SG 21 £700(15) \$725

Like to trawl,
but do not want to stay glued to your computer?



Register to participate in our auction through our Teleconference Service.Contact us for details.

EAST AFRICA AND UGANDA



196



197



198



199



200



201



202



203



204



205





206

196	☆	East Africa and Uganda; 1903, King Edward VII, 10r gray & ultramarine, l.h., very fine. SG 14 £450(14)	\$475
197	☆	East Africa and Uganda; 1903, King Edward VII, 20r gray & stone, o.g. hinge remnant, fresh colours, fine. SG 15 £800(15)	\$824.
198	☆	East Africa and Uganda; 1903, King Edward VII, 50r gray & red brown, lightly hinged, rich colour well centred, very fine, Brun & A. Roig handstamps. SG 16 £2,500(16)	\$2,600
A lovely copy.			
199	☆	East Africa and Uganda; 1907, King Edward VII, 10r gray & ultramarine, o.g. hinge remnant, fresh colours, very fine. SG 31 £375(29A)	\$400
200	☆	East Africa and Uganda; East Africa and Uganda; 1907, King Edward VII, 20r gray & stone, on chalk-surfaced paper, o.g. hinge remnant, fine. SG 32 £850(30)	\$875
201	☆	East Africa and Uganda; 1907, King Edward VII, 50r gray & red brown, fresh bright colours, o.g., fine, Brandon Cert. (1985). SG 33 £2,750(30A)	\$2,750
202	☆	East Africa and Uganda; 1912, King George V, 20r black & purple on red, l.h., very fine. SG 59 £500(55)	\$500
203	☆	East Africa and Uganda; 1918, King George V, 20r purple & blue on blue, o.g., fine. SG 60 £550(56)	\$575
204	☆	East Africa and Uganda; 1912, King George V, 50r dull rose red & dull grayish green, o.g. with trace of toning, fine. SG 61 £900(57)	\$925
205	☆	East Africa and Uganda; 1917-21; 50r carmine and green, l.h. fresh colours, fine. SG 62 £750(N122)	\$750
206	☆	Gold Coast; 1875, Queen Victoria, 1d blue, perf 12½, o.g., perforations clear, fresh colour, very fine. SG 1 £550(1)	\$550

GREAT BRITAIN

Autographs and Free Franks



- | | | |
|-----|---|---|
| 207 |  | Autograph: Arthur Conan Doyle: Author of "Sherlock Holmes", Short letter and stamped envelope, in his hand from 15 Buckingham Palace Mansions S.W.1, "July 14" to a "Miss Wood 9521-4th Avenue Brooklyn NY", Cancel 17 JY 25, Very Collectible,..... Est. Cash Val. \$400 - 600 |
| 208 |  | Sir Rowland Hill Free Frank, cover front bearing "R.Hill" and red "FREE 10 JU 1834" crowned-circle, to Liverpool., Very popular. This signature from the Reformer of the Postal Service, is very frameable and makes a great gift for any stamp collector.,Est. Cash Val. \$250 - 300 |

CLASSIC GREAT BRITAIN

The following 39 lots comprise a selection of very elusive and seldom offered unused stamps with exceptional colours.

Early collectors of Great Britain classics were led to believe that over time the original gum would prove deleterious to the stamps condition. Many were soaked to remove the gum. The same held true for the classic United States issues, but not quite to the same degree. As time went on it was found that the gum did not generally harm the stamps and the “regumming” industry opened up. There is, at times, major disagreements among experts that the “new gum” could almost be considered the norm. These stamps should be judged by their merits, such as fresh colour, paper and condition. Due to tight stamp spacing, good centering is elusive.

Side Note: About three months ago, April 26, 2019, Spink offered the “Bacchus” Collection of G.B., perhaps one of the most complete collections of unused G.B. classic numbers. We offer here ten stamps missing from that collection.

See the “Collections & Various” section for the lovely remainders.



210

- 209 O 1840, 1d black, bare trace of red cancel at top right, margins all around, close but clear one spot at bottom left, 2 thin spots, fine unused appearance. SG 2 (1) (NOTE PHOTO PAGE 35).....Est. Cash Val. \$100 - 125

- | | | | |
|-----|---|--|----------|
| 210 | ☆ | 1840, 2d blue, Plate 2, unused, wonderful fresh colour and good margins all around very close but clear at left bottom (despite cert.), fine, Brandon Cert. (2019). SG 5 £38,000 (2) | \$35,000 |
|-----|---|--|----------|

- | | | | |
|-----|---|--|---------|
| 211 | ☆ | 1841, 2d pale blue, “white lines”, “shifted transfer: upper shift”, unused (regummed), n.h. appearance, good margins all around, very fine, Brandon Cert. (2019), B.P.A. Cert. (2019). SG 13 £9,500. S.G. Spec. ES14e (4a) | \$6,000 |
| 212 | ☆ | 1855, 2d blue on bluish, Small Crown Watermark, perf 16, plate 5, unused (regummed), deep intense colour and printing, fine, Brandon Cert. (2019). SG 20a £10,000 (10b) | \$8,000 |
| 213 | ☆ | 1855, 1d red brown on bluish, Small Crown Watermark, perf 16, Die II, unused, regummed, fresh colour and crisp impression quite well centered, almost very fine, Brandon Cert. (2019). SG 21 £550 . (9) | \$425 |
| 214 | ☆ | 1855, 2d blue on bluish, Small Crown Watermark, perf 14, plate 4, original gum, fresh colour and paper, centred to top left. A very rare stamp. Equal to the copy in the “Bacchus” Collection. SG 23a £13,000 (13 var) | - |

- | | | | |
|---|---|---|----------|
| 215 | ☆ | 1855, 2d blue on bluish, Large Crown Watermark, perf 16, Plate 5, unused (regummed) we believe o.g., fine, Brandon Cert. (2019). SG 27 £18,500 (15) | \$14,000 |
| <i>A very rare stamp. No example in the “Bacchus” Collection.</i> | | | |

- | | | | |
|-----|---|--|---------|
| 216 | ☆ | 1857, 2d blue on bluish, Large Crown Watermark, perf 14, plate 6, part o.g. (rare with original gum), fresh colour, centered to left bottom, fine, No example in the “Bacchus” Collection, P.T.S. Cert. (2018). SG 35 £3,400 (21) | \$3,000 |
| 217 | ☆ | 1870, ½d rose. The first Fractional Currency Stamp, The Complete Selection of Plates 1 through 15 (less the elusive Plate 9) all o.g. (10) or unused (4), colours quite fresh. Plate numbers 3 and 8 a trifle oxidized, perhaps a few trivial faults, nevertheless, a rare opportunity to obtain the setting, attractively mounted on Leuchtturm Specialized Album page. SG 49 £2,980 (58) | \$2,965 |
| 218 | ☆ | 1870, 1½d rose red, o.g., fresh bright colour centred to left bottom. SG 51 £500 (32) | \$500 |

- | | | | |
|-----|---|---|---------|
| 219 | ☆ | 1860, 1½d rosy mauve on bluish paper Plate 1, Prepared for use but not issued, o.g. small hinge remnant, well centered and true colour, very fine. SG 53a £8,500 (31) | \$8,750 |
|-----|---|---|---------|

- | | | | |
|-----|---|--|----------|
| 220 | ☆ | 1847-54, Queen Victoria (embossed), 1s green, o.g., good colour, margins all around (except outer pane line just into at right frame, fine. SG 55 £24,000 (5a) | \$20,000 |
|-----|---|--|----------|



209



211



212



213



214



215



216



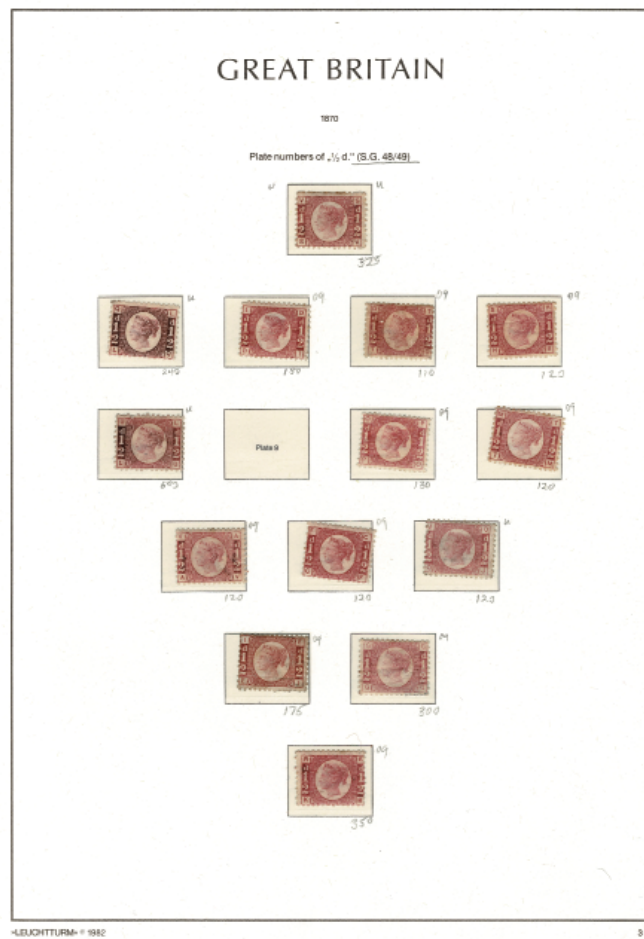
218



219



220



217

221	☆	1848, Queen Victoria (embossed), 10d brown Die 4, o.g., good margins all round to barely touched at left, insignificant tone spot and mount off-sets on reverse. An almost very fine copy of the rarest Die. SG 57 £13,000	(6)	\$11,500
222	☆	1856, Queen Victoria, 4d carmine on thick blued paper, Medium Garter Watermark, original gum, well centred and fresh bright colour, crease and usual negligible natural printing abrasions barely visible with glass, fine. SG 63 £14,000	(24)	\$11,250
<i>Incredibly rare.</i>				
223	☆	1856, Queen Victoria, 6d pale lilac, Emblems Watermark, unused (regummed), we believe o.g., centered to bottom right, No example in the "Bacchus" Collection, Brandon Cert. (2019). SG 70 £1,350.....	(27)	\$1,400
224	☆	1856, Queen Victoria, 1s pale green, Emblems Watermark, unused (regummed), we believe disturbed o.g., uncommon deep colour and crisp printing for the pale green, reperfed and crease, Not in the "Bacchus" Collection, Brandon Cert. (2019). SG 73 £3,250	(28a)	\$3,000
225	☆	1862, Queen Victoria, 3d bright carmine rose, Emblems Watermark, part o.g., bright colour, perforations barely touch, frame-line at top, almost very fine. SG 76 £2,700	(37 var.)	\$2,500
226	☆	1863, Queen Victoria, 4d pale red, hair lines, Type B, Plate 4 large Garter Watermark, o.g. de-hinged, centred to bottom left, fine, Not in "Bacchus" Collection. SG 82 £2,100	(34b)	\$2,150
227	☆	1862, Queen Victoria, 6d lilac, Emblems Watermark, unused (regummed), we believe o.g., fresh colour centred to left, fine, Not in the "Bacchus" Collection, Brandon Cert. (2019). SG 84 £2,250.....	(39)	\$2,250
228	☆	1862, Queen Victoria, 9d bister, Plate 2 Emblems Watermark, toned o.g., centred slightly to right, fine, Not in the "Bacchus" Collection. SG 86 £5,800	(40d)	\$5,500
229	☆	1862, Queen Victoria, 9d straw, Emblems Watermark (regummed), we believe disturbed part o.g., corner perf creases, Brandon Cert. (2019). SG 87 £4,000	(40)	\$3,900
230	☆	1862, Queen Victoria, 1s green, Plate No. 1 = Plate 2 Emblems Watermark, unused, "toned spot" no longer present, centered top left, fresh colour, Not in "Bacchus" Collection, Brandon Cert. (2019). SG 90 £3,200	(42)	\$3,100
231	☆	1865, Queen Victoria, 3d rose, Plate 4 Emblems Watermark, disturbed o.g. bright colour centred to top left. SG 92 £2,500	(44)	\$2,350
232	☆	1865, Queen Victoria, 6d lilac, Plate 5 Emblems Watermark, disturbed part o.g., good colour centred to bottom-right, Not in the "Bacchus" Collection. SG 97 £1,150	(45)	\$1,125
233	☆	1865, Queen Victoria, 1s green, Sheet Margin Emblems Watermark, disturbed o.g., quite well centred, almost very fine. SG 101 £2,850	(48)	\$2,500
234	☆	1867, Queen Victoria, 9d pale straw, Spray of Rose Watermark, unused, regummed (we believe small part o.g.), strong colour and good centreing, fine, Brandon Cert. (2019). SG 111 £2,400	(52)	\$2,400
235	☆	1867, Queen Victoria, 10d red brown, Spray of Rose Watermark, disturbed o.g., good colour, corner crease, centered to bottom left. SG 112 £3,600	(53)	\$3,500



236	☆	1867, Queen Victoria, 5s pale rose, Maltese Cross Watermark Plate 2, o.g. a bit sweated, reperfed, very fine appearance, Bartels handstamp. SG 127 £18,000	(57a)	\$17,500
<i>The example in the Gross Auction was regummed - very elusive Plate 2.</i>				

237	☆	1873, Queen Victoria, 1s pale green, Plate 10 Spray of Rose Watermark, unused (regummed), almost perfect centering with crisp colour, very fine, Brandon Cert. (2019). SG 150 £775	(64)	\$750
-----	---	---	-------------	--------------



221



222



223



224



225



226



227



228



229



230



231



232



233



234



235



237

Bidding

Harmers International avails you to EIGHT forms of bidding in our auctions.

- | | |
|---------------------|------------------|
| 1) Mail | 2) Fax |
| 3) Agent | 4) E-Mail |
| 5) Telephone | 6) Live Internet |
| 7) Dynamic Internet | 8) In Person |

- 238 ☆ 1876, Queen Victoria, 4d vermilion, Large Garter Watermark, unused, somewhat trimmed perforations at left, otherwise well centred with perforations clear of design all around, fine. SG 152 £3,200 (69) \$2,750
- 239 ☆ 1877, Queen Victoria, 4d sage green, Plate 15 Large Garter Watermark, part o.g., bright true colour, centred to top, fine. SG 153 £1,400 (70) \$1,350
- 240 ☆ 1880, Queen Victoria, 4d gray brown, Plate 17, Large Garter Watermark, disturbed o.g., brilliant colour, perforations clear all around, very fine. SG 154 £2,800 (71) \$2,750
A splendid stamp.
- 241 ☆ 1876, Queen Victoria, 8d orange, Plate 1, Large Garter Watermark, disturbed o.g., deep colour, well centered all perforations clear all round, very fine. SG 156 £1,850 (73) \$1,750
- 242 ☆ 1876, Queen Victoria, 8d orange, Plate 1, Large Garter Watermark, o.g. hinge remnant, absolutely perfect centering, small thin, very fine appearance, Not in "Bacchus" Collection. SG 156 £1,850 (73) \$1,750
- 243 ☆ 1883-1884 Set complete to 6d (less 3d), o.g. or unused or regummed, fresh colours, most well centered for this difficult issues. A most elusive and fine group. SG 187-194 less 191 £2,270 (98-105 less 102) \$2,214
- 244 ☆ 1883, Queen Victoria, 9d dull green, Watermark Sideways and Inverted l.h., fresh colour, fine for this very rare variety, Not in "Bacchus" Collection. Scott (105 var)..... SG 195wi £2,000
- 245 ☆ 1884, Queen Victoria, 1s dull green, o.g. de-hinged, fresh colour and well centred, very fine. SG 196 £1,600 (107) \$1,450
- 246 ☆ 1891, Queen Victoria, £1 green, o.g., fresh colour and paper, quite good centering with all perforations clear to well clear, two natural creases typical of these elongated stamps, fine. SG 212 £4,000 .. (124) \$4,000
- 247 ☆ 1902, King Edward VII, De La Rue printing, 10s ultramarine, o.g. hinge remnant, wonderful rich colour, gum wrinkles typical of these large format stamps, very fine. SG 265 £1,000 (141) \$875
- 248 ☆ 1902, King Edward VII, De La Rue printing, £1 dull blue green, o.g. hinge remnants, well centred, fresh bright colour, partial vertical gum crease generally present in these large format stamp, fine. SG 266 £2,000 (142) \$2,000



GREAT BRITAIN, PART II

- 249 ☒ **Used to Malta: 1867, Queen Victoria, 1s green and 1864 1d rose red, 1s (plate 4) with wing-margin,** both tied by "9" in grid strikes on folded letter sheet to Malta, bearing blue London origin and MALTA JA 31 1869 receiver on the reverse. SG 117,43 (54,33)Est. Cash Val. \$150 - 200
- 250 O **1882, Queen Victoria, 5s rose on white paper, Anchor Watermark, lettered C-E, neat LEADEN-** \$5,000 Plus
HALL ST. AP 1 84 c.d.s., well centered, very fine almost a premium stamp. SG 134 £4,200 Plus 75%
cancel/centering(90a) 75% cancel/
centering
- 251 O **1882-83, Queen Victoria, 5s rose on white paper, Anchor Watermark, Plate 4, light MOSTYN-** \$5,000
QUAY WALES (small village port, scarce) MR 8 84 c.d.s. some short perfs and thinned. SG 134 £4,200
.....(90a)
- 252 O **1883 to 1891 Victoria, 2 sh 6p, 5sh, 10, sh, 1£, all cancelled, 2 lightly, 5sh rounded corner, £1 small**
edge crease, generally fine to very fine. SG 178,180,183,212 £1,735(96,108,109,124) \$1,765
- 253 O **1902-11 Watermark Anchor, 2sh6p, 5sh, 10sh, neat cancels especially on 10sh, very fine trio.** SG
260,263,265 £850(139-41) \$1,535
- 254 O **1902-11 Watermark Anchor, 2sh6p, 5sh, 10sh, strong cancels, fine to very fine.** SG 260,263,265 £850
.....(139-41) \$1,535



251



252 ex

250



253

254 ex





255



256



257



258



259



261



260



262

255	☆☆/☆	1913, Coil Stamps, King George V coil, 1/2d bright green, Royal Cypher Multiple Watermark, 1d dull scarlet PAIRS, o.g. light bends, n.h, respectively, fine and very fine, Absent from the "Bacchus" Collection. SG 397, 398 £750	(177,178)	\$1,070
256	P	1913 5sh rose-carmine Plate Proof (weak print) on thin wove paper, large margins all around. SG 401PP (174PP)	Est. Cash Val.	\$100 - 150
257	☆	1913, King George V "Seahorse", Waterlow printing, 5s rose carmine, l.h., extremely fine. SG 401 £625	(174)	\$475
258	☆	1913, King George V "Seahorse", Waterlow printing, 1s green, l.h., bright colour, large copy, one short perf., almost very fine. SG 403 £3,500	(176)	\$3,000
259	☆	1915, King George V "Seahorse", De La Rue printing, 5s pale carmine, o.g. hinge remnant, very fine. SG 410 £800	(174c)	\$625
260	☆	1919, King George V "Seahorse", Bradbury, Wilkinson printing, 10s dull gray blue, l.h., very fine. SG 417 £475	(181)	\$340
261	☆☆	1929, 1s P.U.C., never hinged, very fine. SG 438 £750	(209)	\$1,100
262	☆	1929, 1s P.U.C., lightly hinged almost perfect centering, fresh, very fine. SG 438 £750	(209)	\$750

Harmers International, Inc. offers Live Internet bidding in our auctions.

Internet Service can be accessed through our website or directly through Stamp Auction Network.Com.

Here are few important details to remember.

- 1) All bidders must register Make Certain you have the right Company.
- 2) Call or send us an email if you are not certain.
- 3) Internet speed and performance varies . "Downed Systems and Lost Connections" can occur. We strongly recommend using the phone or an agent as a back-up.

Officials



263



264



265



266



267



268



269



270



271



272

263	O	I.R. OFFICIAL 1885, Queen Victoria, 1s dull green, cancel removed, genuine overprint, catalogue \$6,250 as unused, fine appearance, A.P.S. Cert. (1992). SG O7 £1,900 as used(O7)	\$1,900 as used
264	☆	INLAND REVENUE OFFICIAL, 1890, Queen Victoria, overprint, 5s rose, unused (regummed), a few hard to see faults, very fine appearance, B.P.A. Cert. (2019). SG O9 £12,000(O8)	\$10,000
265	☆	GOVT. PARCELS, 1883, Queen Victoria, overprint, 9d dull green, unused, fine, B.P.A. Cert. (1959) signed R. Lowe, Ginn. SG O63 £2,600(O29)	\$2,600
266	☆	GOVT. PARCELS, 1888, Queen Victoria, overprint, 9d dull purple & blue, l.h., very fine, very pretty, Brandon Cert. (2019). SG O67 £425(O35)	\$400
267	☆	GOVT. PARCELS, 1892, Queen Victoria, overprint, 4½d green & carmine, o.g. hinge remnant, very fine. SG O71 £400..... (O33)	\$375
268	☆	GOVT. PARCELS, 1900 Queen Victoria 1sh carmine rose and green, o.g., hinge remnant, all perforations clear, very fine. SG O72 £650 (O38)	\$625
269	☆ ☆	R.H. OFFICIAL, 1902, King Edward VII, overprint, ½d blue green, never hinged, almost very fine. SG O91 £375(O63)	\$400
270	☆ ☆	ADMIRALTY OFFICIAL, 1903, King Edward VII, overprint, 1½d dull purple & green, never hinged, almost very fine. SG O103 £325..... (O74)	\$310
271	☆ ☆	ADMIRALTY OFFICIAL, 1903, King Edward VII, overprint, 2d yellowish green & carmine red, Sheet Margin Copy, stamp n.h., very fine, Brandon Cert (2019). SG O104 £350 (O75)	\$340
272	☆ ☆	ADMIRALTY OFFICIAL, 1903, King Edward VII, overprint, 3d purple on yellow, never hinged, very fine, Brandon Cert. (2019). SG O106 £425(O77)	\$425

"Stamp Collecting dispels boredom, enlarges our vision, broadens our knowledge, makes us better citizens and in innumerable ways, enriches our lives"

- President Roosevelt

His collection was sold by the Harmer Family

HELIGOLAND



273



277



274



275



278



276



279



280



281



282

2:

- | | | | |
|-----|-----|--|----------------------------|
| 273 | O | 1867, 1sch rose & blue green, neat straight line HELGOLAND cancel margins and roulettes all round, R.P.S. Cert. (1983). Michel 2 (2)SG 2 | £200 |
| 274 | ☆☆⊕ | 1867, 6sch green & rose, Bottom Right Corner Block of Four, stamps n.h., extremely fine, Jens Müller Cert. (2009). Soctt (4),SG 4. | Michel 4 €180 |
| 275 | O | 1867, 6sch green & rose, roulettes complete, neat SP13 1873 c.d.s., extremely fine, Sommer, Lemberger and Huber et al. handstamps. SG 4. Michel 4 €600 | (4) \$475 in italics |
| 276 | O | 1869, ½sch blue green & carmine, HELGOLAND_AU 1871 c.d.s., fine, Karl-Heinz Schulz Cert. (2001) Lemberger, Pfenninger and Sommer handstamps. SG 6 £250. Michel 6a €320 | (5a) \$250 |
| 277 | ☆ | 1872, ½sch olive green & carmine, l.h., very fine, Lemberger handstamp. SG 6a var. Scott 5b,Michel 6e | €325 |
| 278 | ☆ | 1872, ½sch olive green & carmine, very l.h., fine, Schlesinger handstamp. Scott 5b, SG 6a var. | Michel 6e €325 |
| 279 | ☆ | 1872, ½sch olive green & carmine, part o.g., fine, Karl-Heinz Schulz Cert. (2002). SG 6a var. Scott 5b, | Michel 6e €325 |
| 280 | ☆☆ | 1873, ½sch green & rose on quadrillé paper, Fehldruck (error), never hinged, centred,extremely fine, Lemberger handstamp. SG 5a. Scott 8 | Michel 8F €220 |
| 281 | ⊠ | Used to Russia (Lapland); 1875, 5pf / 3f deep yellow green & rose, tied by HELIGOLAND JU 15 1889 c.d.s. on neat small envelope bearing blue ST. Petersburg c.d.s. on reverse, Karl-Heinz Schulz Cert. (2002) Lemberger handstamp. SG 13. Michel 13a (16)..... | Est. Cash Val. \$100 - 150 |
| 282 | ☆ | 1889, 1m deep green, aniline rose & black, SHEET MARGIN COPY, l.h., very fine, Old Stanley Gibbons handstamp. SG 18b £170. Scott 22a | Michel 19Ab €280 |



283

- 283 ☆☆☆/ 1889, 1m deep green, aniline rose & black, SHEET MARGIN BLOCK OF FOUR, 2 n.h., 2 o.g.,
 ☆⊕ very fine, Signed Diena. SG 18b £680 as o.g. and singles. Scott 22a.....Michel 19Ab €1,560



284

- 284 ☒ 1879, 5sh/5m deep green, aniline rose & black, tied by HELIGOLAND AU 7 1890 c.d.s. on Registered envelope bearing appropriate label Number 697 with same day receiver on reverse., Brettl Cert. (2011). SG 19 £2,850. Michel 20A €1,800(23) \$2,250

Very Rare.

INDIA



285	O	1852, Scinde Dawk, ½a blue, lightly cancelled, fresh colour, good to large margins all around, very fine, Foundation Cert. (2018). SG S2 £11,000 (A2)	\$11,000
<i>A very difficult stamp to find fresh and sound.</i>			
286	O	India Used abroad; 1854 In Singapore 2c green “B172” cancel, margins all around very fine; In Aden, 4a blue & red head die 3, frame die 2, 4th printing cut to shape “124” cancel. SG 31,23,.....Est. Cash Val.	\$100 - 150.
287	☆	1855, Queen Victoria Typographed, 4a black, blue glazed paper, unused, deep colour, a few short perfs, fine. SG 35 £1,400(9)	\$1,500.
288	☆	1860, Queen Victoria Typographed, 2a dull pink, white paper, trace of o.g., well centered, bright colour, faint internal crease, almost very fine. SG 41 £1,300(13)	\$1,300.
289	☆	1859, Queen Victoria Typographed, 2a yellow buff, white paper, part o.g. (faint gum toning), fine. SG 42 £1,200(15)	\$900.
290	☆	1856, Queen Victoria Typographed, 8a carmine, white paper, o.g., few wrinkles, excellent centering, very fine. SG 48 £1,300 (18)	\$900
291	☆	1856, Queen Victoria Typographed, 8a carmine, white paper, o.g. hinge remnant, very fine. Scott 18,SG 48	£1,300
292	☆	1856, Queen Victoria Typographed, 8a carmine, white paper, unused, fine. Scott 18SG 48	£1,300
293	☆	1865, Queen Victoria “Crown Colony” Issue, 4a green, o.g. hinge remnant, fine. Scott 24SG 64	£1,500
294	☆ ☆	1898, Queen Victoria, ¼a on ½a blue green, Double Impression of stamp, never hinged, crease, fine, B.P.A. Cert.(2017). Scott 53b.....SG 110b	£750
295	☆	1909, King Edward VII, 25r brownish orange & blue, indistinctive red CALCUTTA telegraph cancel, very fine. Scott 76SG 147	£600
296	O	1909, King Edward VII, 25r brownish orange & blue, black BOMBAY G.T.O. c.d.s. cancel (telegraph), fine. Scott 76SG 147	£600
297	☆	1913, King George V, 25r orange & blue, o.g., fresh colours, fine.Scott 98SG 191	£600
298	☆	1937-40, King George VI, 3p-25r complete, lightly hinged, very fine. Scott 150-167SG 247-64, 277	£691 as individual stamps
299	☆	1937-40 Set to 15r, l.h. to o.g., fine. Scott 150-166SG 247-263	£397
300	☆☆⊕	India, 1937 King George VI 1/2a red brown, pane of 80 with border margins and arrows,never hinged, very fine. Scott 151SG 248	£800 as hinged
301	☆ ☆	1937, King George VI, 25r slate violet & purple, o.g., never hinged, very fine. Scott 167,.....SG 264	£275 as hinged
302	☆	1948, Gandhi complete set of four, l.h., very fine.Scott 203-206..... SG 305-8	£451
303	☆	1948, Gandhi complete, l.h., very fine. Scott 203-206SG 305-8	£451 as singles
304	☆	Chamba, 1938 3P to 10r, lightly hinged, fine to very fine. SG 82-97 £787(70-85)	\$620
305	☆	Faridkot, 1887-96, State complete by Scott, 18 stamps, l.h. to o.g. (4a,6a unused), fine to very fine. SG £459..... (4-09)	\$544.





306



307

- | | | | |
|-----|-----|---|-------------------|
| 306 | ☆☆⊕ | Gwalior, 1949, 2r dark brown and dark violet, Left Sheet Margin Gutter Premium Block of Eight, never hinged impressive position block, extremely fine. SG iL3 £400 as l.h.(113) | \$590 as n.h. |
| 307 | ☆☆⊕ | Jind, 1938, 15r brown and green, Gutter Block of FOUR with selvage, never hinged, post office fresh colours, extremely fine. SG 125 £440 as hinged and no premium (149) | \$440 as singles. |

WISHING TO CONSIGN?
The best number in Philately800-223-6076

KENYA, UGANDA & TAGANYIKA



308 ex



309



310



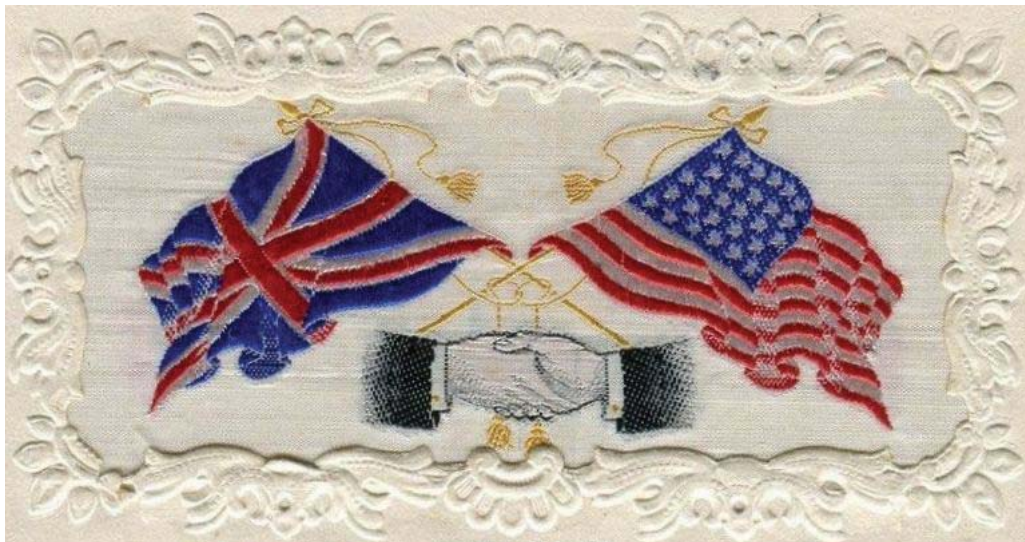
311



312

308	☆	1922-27, King George V, 1s to £1, fresh colours, l.h. o.g. some hinge remnants, fine to very fine. SG 87-95 £555(29-37)	\$578
309	☆	1925, King George V, £2 green & purple, o.g., deep colours, very fine. SG 96 £1,100 (38)	\$1,150
310	☆	1925, King George V, £3 purple & yellow, fresh colours, o.g. disturbed, few gum tone spots, centred, o.g., never hinged, still very fine. SG 97 £1,800(39)	\$1,850
311	☆	1925, King George V, £4 black & magenta, very l.h., fine. SG 98 £3,000..... (40)	\$5,000
312	☆	1922, King George V, £5 black & blue, o.g. fresh colours, very fine. SG 99 £3,250(41)	\$5,500

An exceptional stamp.



Not Based in the United States? No worries, Harmers International has agents Worldwide.



313

Kuwait 's
first post office opened
in January 1915 using
India's stamps.
In April 1923 the
"KUWAIT" overprint
was introduced. The double
overprint is a known error.



314

- 313 ☆ ☆ **Kuwait; 1923-24 1½a green Double Overprint**, never hinged, fine. Scott 1a..... SG 1a £350
- 314 ☆ ☆ **Jordan; 1924, Officials, 1/2pi red, detached enormous sheet margin copy with inscription**, never hinged, the only Jordan Official stamp, extremely fine (O1) \$200.

Lagos



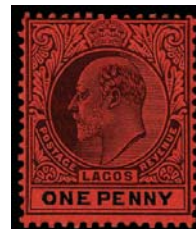
315



316



317



318 ex

- 315 ☆ **Lagos; 1874, Queen Victoria, 1s orange, value 16½mm, l.h.**, bright fresh colour, perforations clear, very fine. SG 8 £425..... (6a) \$425.
- 316 ☆ **Lagos; 1886, Queen Victoria, 5s blue, o.g.**, fresh colour, perforations clear, almost very fine, Richter handstamp and others. SG 28 £700(35) \$750.
- 317 ☆ **Lagos; 1886, Queen Victoria, 10s purple brown, o.g.,bright fresh colour, perforations clear all round a few short at top, fine.** SG 29 £1,600(37) \$2,750
- 318 ☆☆☆ **Lagos; 1904, King Edward VII, ½d-10s complete, l.h.to o.g. few n.h.**, fine to very fine. SG 44/53 £727 as singles(40-49) \$755

PAHANG

and

MAURITIUS



- 319 O Malayan State; Pahang, 1889, 8c orange, “PAHANG” overprint on Straits Settlements, very light cancel and quite well centred for this issue, fine and very rare, Royal Cert. (2002). SG 2 £1,800 ..(2) \$2,000
George Asch, one of the great collectors of British Asia, had three o.g. copies of the 8c and only 1 used. He was quoted that his copy “was the only used copy he had ever seen.” We think this is scarce and is the equal to his.
- 320 O Mauritius; 1848-59, “Post Paid”, EARLIEST IMPRESSION 1d orange vermillion on yellowish, neat light barred cancel, 4 outstanding margins, crisp and deep impression, a few small faults that detract little from this lovely classic stamp, Brandon Cert. (1979). SG 3 £18,000 (3) \$18,000
Very elusive and far, far rarer than the more common early impressions.



- 321 O Montserrat; 1876, “MONTserrat” on Antigua 6d green, “S” inverted, very light cancel showing the error, deep color, bottom left corner crease, fine. SG 2b £1,200 (2c) \$1,350

Natal



- 322 ☆ Natal; 1902, King Edward VII, £1 10s green & violet, l.h., very fine. SG 143 £600(97) \$600
- 323 ☆ Natal; 1908, King Edward VII, £1 10s brown orange & deep purple, l.h., brilliant colours, almost very fine. SG 162 £1,800(109) \$1,900
- 324 ☆ Natal; 1908, 6d-£1 King Edward VII complete set of seven, £1 l.h., rest o.g. hinge remnants. fine to very fine. SG 165/71 £635 as singles(110-116) \$679
- 325 O Natal; 1908, King Edward VII, £1 purple & black on red, c.d.s. cancels, rare used, very fine. SG 171 £375 (116) \$400



326



327 ex



328



329

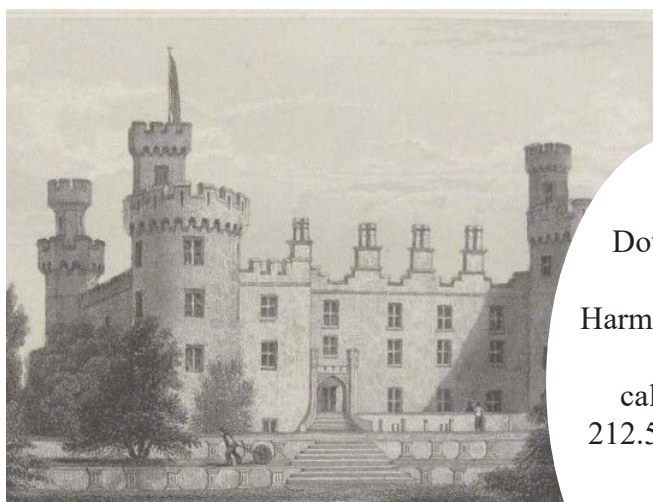


330



331

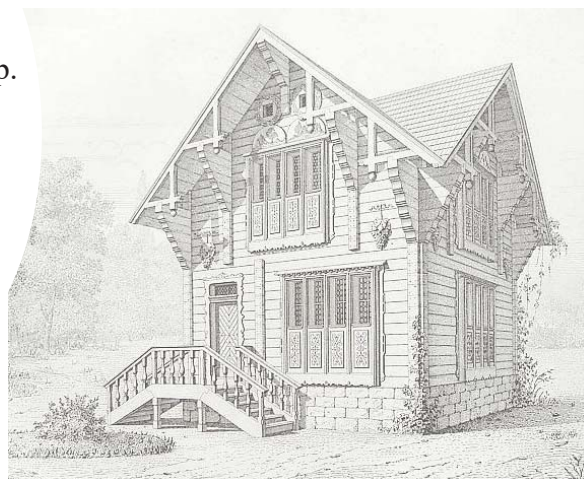
- | | | | | |
|-----|-----|---|------------|--------|
| 326 | ★ | New Britain; 1914, G.R.I. 3d on German New Guinea 30pf black & orange on buff, o.g., very fine, Signed Richter. SG 8 £475 | (8) | \$475 |
| 327 | ★ | New Guinea; Airmail, 1939, Bulolo Goldfields, 1/2d to £1 complete set of 14, barely l.h., very fine set. Scott (C46-C59)..... | SG 212/25 | £1,100 |
| 328 | ★ O | Niger Company Territories; 1893 Surcharges, comprising S.G. type 3 1/2d on 2d (violet) neat c.d.s., type 7 1/2 d on 2 1/2d (vermilion), o.g. crease, type 8 1/2d on 2d (vermilion) light c.d.s., generally fine to very fine..... | SG 9,21,25 | £1,375 |
| 329 | ★ | Niger Coast Protectorate; 1893, Old Calabar provisional, 1s on 2d gray green & carmine, vermilion surcharge, o.g., very fine. SG 38 £750 | (30) | \$825 |
| 330 | ★ | North Borneo; 1905/1910 \$5.00 dull purple, l.h., fine. Scott 150..... | SG 144 | £425 |
| 331 | ★ | Nyasaland; 1908, King Edward VII, £1 purple & black on red, o.g. hinge remnant, very fine. SG 81 £650 | (10) | \$650. |



Down Sizing?

Harmers can help.

call us at :
212.532.3700



RHODESIA



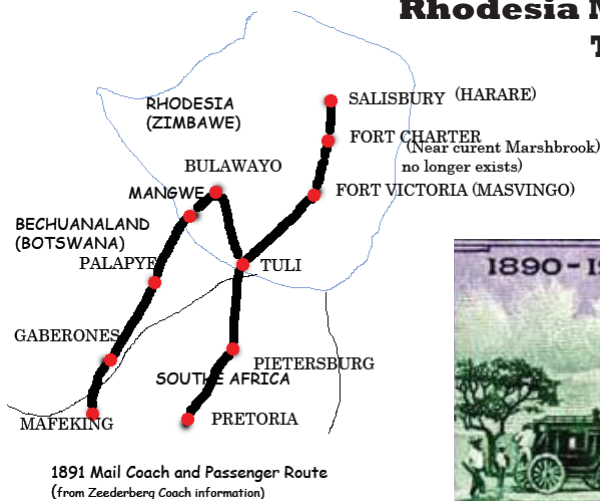
332



333

- 332 O 1892, Arms, 1/2d on 6d ultramarine, lightly canceled, very fine, Ex. M. General Sir Hakewill Smith, Royal Cert. (1975). SG 14 £500..... (20) \$525.
- 333 ☆ 1902, Arms, £1 blackish purple, perf 14.8, o.g. hinge remnant, deep colour, well centered, few short perfs, almost very fine. SG 90 £650 (72a) \$725.

Rhodesia Mail/Passenger Route Then & Now



The Most Important Number in Philately
will not be found in
Scott, Stanley Gibbons, Yvert or Michel

1-800-223-6076

The Harmers International Auction Department.
Dial now if you are interested in selling your collection.

RHODESIAN “DOUBLE HEADS” 1910 to 1919



334



335

All stamps are identified solely by Stanley Gibbons due to the intricacies of colours, and have been identified by Mr. Robert M. Gibbs.

- 334 ☆ 1910, King George V “Double Head”, 2s black & ultramarine, perf 14, Position 46 “Kings Extra Curl”, o.g., very fine. Scott 112SG 153 £120

- 335 ☆ The “2 shilling Light Blue”
- 1910-13 2 shilling RSC Deep black and light blue RSC ‘E’ Deep black and light blue, The head colour is a very deep black. The frame colour is a brilliant light blue with a tendency towards the S.G. Key ‘pale blue’. This is the only 2s. in which the frame is seen as light blue under ultraviolet. In daylight the value tablets are smooth with a lack of distinct cross-hatching.
- In daylight, there are two distinct frame colours, one light blue and the other a pale grayish light blue. The former shows considerable contrast between heavily and lightly inked areas, and the latter is noticeably monochromatic. This difference is confirmed under ultra-violet, and pale grayish light blue shade almost certainly represents a different printing, and should probably be regarded as a variant, o.g. extremely rare, small faults, fine, A far less controversial stamp than the S.G. 154a, R. Gibbs only had one o.g. sound example sold for £5600. Scott 112 var.SG 154 var. £1,900 for normal
- Grossly undercatalogued rarity.*



336



337



338

- 336 ☆ 1910, 2s6d black & lake, perf 14, o.g., deep rich frame, almost very fine. Scott 113,..... SG 155 £350
- 337 ☆ 1910, 2s6d black & crimson, perf 14, o.g., intermediate frame, very fine. Scott 113 var.SG 155a £350
- 338 ☆ 1910, 5s vermilion & deep green, perf 14, Pos. 25, “Lines by King’s Cheek” RSC “A”, o.g. hinge remnant, one short perforation, fine. Scott 115 SG 159 £325+



339



340



341



342



343



344



345



346



347



348



349



350



351

339	O	1910, 5s deep rose-red & brighter yellow-green, perf 14, RSC "E" the so called "apple" green, neat c.t.o. cancel, almost very fine. Scott 115 var.SG 160 var	£200 as normal
340	☆	1910, 5s brown red & green, perf 14, RSC "A", o.g. hinge remnant, very fine. Scott 115 var.SG 160a var.	£300 for normal
341	☆	1910, 7s6d carmine & pale blue, perf 14, RCS "A", o.g. part hinge remnant, faint staining at bottom, fine. Scott 116SG 160b	£650 for normal
342	☆	1910, 7s6d carmine & pale blue, perf 14, RSC "C", o.g., ink mark at lower left, fine. Scott 116SG 160b	£650 for normal
343	O	1910, 7s6d carmine & pale blue, perf 14, RSC "C", c.t.o. cancel, fine. Scott 116SG 160b	£650 for normal
344	O	1910, 7s6d scarlet & deep bright blue, perf 14, RSC "E", c.t.o. cancel, fine. Scott 116 var.SG 162 var	£1,400 for normal
345	☆	1910, 10s deep myrtle & orange, perf 14, o.g., very fine. Scott 117aSG 163	£650
346	☆	1910, 10s blue green & orange, perf 14, o.g. hinge remnant, very fine. Scott 117SG 164	£425
347	☆	1910, £1 carmine red & bluish black, perf 14, Pos. 30, o.g., very fine. Scott 118SG 165	£1,700
348	☆	1910, £1 rose scarlet & bluish black, perf 14, re-entry(frameplate) at left end of RHODESIA panel, o.g. hinge remnant, couple of shortish perforations, almost very fine. Scott 118aSG 166	£1,600 for normal
349	O	1910, £1 rose scarlet & bluish black, perf 14, c.t.o cancel, very fine. Scott 118aSG 166	£375
350	☆	1910, 2d black & gray black, perf 15, o.g., some faint staining, fine, very rare. Scott 103b var. ..SG 171	£900
351	☆	1910, 4d black & orange, perf 15 x 14, o.g. hinge remnant, very fine. Scott 106bSG 181	£450



352



353 ex

- 352 ☆ 1913, King George V “Admiral”, £1 black & violet, Head Die II, perf 14, distinctive “paint wash above cap”, o.g., fine. Scott 138SG 243 £450+
- 353 ☆ O 1910-1919 “Double Heads” Remainder Collection of 40 stamps (14 used) on two stock pages 1/2 p to £1 (fiscal cancel), including “footprint” flaw 3d, “button flaw” 1 sh, RSC “A” and “B”, generally very fresh and fine to very fine. Also £1 Admiral. All identified by R. Gibbs listing available..... SG £4,300 as normals



354



355



356



357

St. Helena

- 354 ☆ 1868, Queen Victoria, 2d on 6d yellow, perf 12½, Type B surcharge, o.g., decent centering for the issue, very fine, Sismondo Cert. (2004). SG 9 £180(19) \$200
- 355 ☆ 1922, King George V, £1 red violet & black, numeral sheet margin copy. l.h., extremely fine. SG 96 £450(99) \$475
- 356 ☆ 1922, King George V, 15s gray & purple on blue, l.h., very fine. SG 113 £1,100 (94) \$1,100
- 357 O 1922, King George V, 15s gray & purple on blue, neat cancel, well centered, tiny natural paper flaw, almost very fine, Very rare used. SG 113 £2,750(94) \$2,750



358



359



360



361



362

St. Vincent

- 358 O St. Vincent; 1873, Queen Victoria, 1s lilac rose, perf 11-12½ x 14 to 16 Sheet Margin Watermark showing portion of papermaker, neat legible A10 grid cancel very tall copy unusual, fine. SG 20 £350(22) \$400
- 359 ☆ ☆ St. Vincent; 1875, Queen Victoria, 1s claret, perf 11-12½, never hinged, deep rich colour, typical centering perforations intact, fine. SG 21 £600(18) \$675
- 360 ☆ St. Vincent; 1877, Queen Victoria, 6d pale green, perf about 15, Watermarked Sideways, o.g. bright colour, almost very fine. Scott 15 var.SG 26 £1,600
- 361 ☆ 1881, Local Surcharge, ½d on half of 6d bright green, part o.g., very fine, probably a bottom sheet margin copy. SG 33 £160(31) \$150
- 362 O Seychelles; Mauritius used in Seychelles: 1878, 2r50c on 5s bright mauve, neat B64 cancel fresh, fine. SG 245 £500(A38) \$575

Sierra Leone



363



364



365



366



367



368



369



370

363	☆	1883, Queen Victoria, 4d blue, unused, fresh blue colour, perforations clear, very fine, Brandon Cert. (1980). SG 26 £1,100(29)	\$1,150
364	☆ O	1903, King Edward VII, 1d purple on red TWO COPIES, one l.h. the other lightly cancelled, both fresh and very fine. SG 85 £675(76)	\$575
365	☆	1912, King George V, 2d blue & dull purple, o.g., very fine. SG 129 £950(120)	\$950
366	☆	1912, King George V, 5d orange & green, disturbed o.g. and some light toning, well centered, fine copy. SG 130 £3,750(121)	\$3,750
367	☆	1923, King George V, 2d blue & dull purple, l.h., fresh, very fine. SG 147 £900..... (138)	\$900

368	☆	1923, King George V, 5d orange & green, o.g., very fine. SG 148 £3,500(139)	\$3,500
-----	---	---	---------

An exceptional stamp.

369	☆	Sierra Leone; 1933, 1d Wilberforce Centenary, l.h., very fine. SG 180 £650(165)	\$650
370	O	Sierra Leone; 1933, 1d Wilberforce Centenary, light AU 23 34 c.d.s., very rare used, very fine. SG 180 £850(165)	\$850 italics



- 371 ☆ South Africa 1£ green & red, l.h., very fine. SG 17 £650(16) \$800
- 372 O South Africa; 1£ green & blue, neat "1" in circle cancel, fresh and fine. SG 17 £600 (16) \$600
- 373 ☆ South Africa; 1927-1930 2d to 10s set of SEVEN bilingual PAIRS, l.h. to o.g., fine to very fine. SG 34-39 £650 (26-32) \$720
- 374 ☆ Southern Rhodesia; 1924, King George V "Admiral", ½d blue green, VERTICAL PAIR IMPERFORATE BETWEEN, l.h., very fine. SG 1b £1,200(1a) \$1,200
- 375 ☆☆☆ South West Africa; 1923, Setting I overprints on South Africa KGV, ½d-1£ complete, l.h. to o.g. 2/6p n.h., o.g., some never hinged / some hinged, fine to very fine. SG 1/12 £2,570 (1-12) \$2,247
- 376 O South West Africa; 1923, Setting I overprint on South Africa KGV 1£ green & red, neat WINDHOEK c.d.s., rare, almost very fine. SG 12 £1,900 (12) \$2,000
- 377 ☆ South West Africa; 1923, Setting II overprints on South Africa KGV, 5s-1£ complete set of three Bilingual PAIRS, fresh colour, l.h. to o.g., fine. SG 13/15 £1,660 as singles(13-15) \$1,825
- 378 ☆ ☆ South West Africa; 1923, Setting II overprint on South Africa KGV 1£ green & red, never hinged, very fine. SG 15 £1,000 as hinged (15) \$1,500
- 379 ☆ Tanganyika; Mafia Island:1915 overprint G.R. MAFIA in reddish violet 2½h,4h,7½h,15h,30h,45h, l.h if at all, well centred, very fine. SG 1-4,6,7 £1,345..... (NL25-32 less NL29) \$2,375



380

- 380 ☆ Togo; 1915, "ANGLO-FRENCH OCCUPATION" on Gold Coast, Accra overprint, ½d green, DOUBLE OVERPRINT, o.g., very fine. SG H34g, Scott 66a both unpriced.....Est. Cash Val. \$1,500 - 2,000

Zanzibar



381 ☆ ☆ 1908, View of Port and Sultan's Palace, 30r black & sepia, Right Sheet Margin Copy, never hinged, deep lush colours, natural gum crease, very fine. SG 241 £750(115) \$775.

382 ☆ ☆ 1908, View of Port and Sultan's Palace, 40r black & orange brown, Top Sheet Margin Copy, never hinged, bright colours, very fine. SG 242 £950(116) \$975

383 ☆ ☆ 1908, View of Port and Sultan's Palace, 50r black & mauve, never hinged, bright colours, very fine. SG 243 £900(117) \$875

384 ☆ ☆ 1908, View of Port and Sultan's Palace, 100r black & steel blue, never hinged, centred, brilliant colours, very fine. SG 244 £1,300(118) \$1,350

385 ☆ ☆ 1908, View of Port and Sultan's Palace, 200r brown & greenish black, never hinged, deep colours, extremely fine. SG 245 £1,800(119) \$1,850

386 ☆ 1913, Dhow, 30r black & brown, l.h. deep colours, very fine. SG 260c £400(136) \$425

387 ☆ 1913, Dhow, 40r black & vermillion, l.h., bright colours, centered, very fine. SG 260d £700.....(137) \$725

388 ☆ 1913, Dhow, 50r black & purple, l.h. if at all, bright colours, centred, faint gum toning, still very fine. SG 260e £700.....(138) \$725

389 ☆ 1913, Dhow, 100r black & blue, l.h., bright colours, centred, extremely fine, Ex. J.W. Barrell, Royal Cert. (1966). SG 260f £950(139) \$1,000

390 ☆ Zanzibar; 1913, Dhow, 200r brown & black, very l.h., centred, brilliant deep colours, extremely fine. SG 260g £1,400(140) \$1,450

Zululand



391	☆	1892, "ZULULAND" on Great Britain 5s rose, o.g. hinge remnants, centred, bright colour, very fine. SG 11 £700(11)	\$725
392	☆	1888, "ZULULAND" on Natal ½d dull green, with period, DOUBLE OVERPRINT, small part o.g., faint toning, fine and very rare. SG 12a £1,100(12b)	\$1,450
393	☆	1894, Queen Victoria, £1 purple on red, l.h., very fine. SG 28 £600..... (23)	\$625
394	O	1894, Queen Victoria, £1 purple on red, light cancels, very fine. SG 28 £650(23)	\$675

395	O	1894, Queen Victoria, £5 purple & black on red, light ESHOWE c.d.s., very fine. SG 29 £1,600..(24)	\$1,900
-----	---	--	---------

Cleaning your collection?
Harmers International
can help.



- * Auction
- * Private Treaty
- * Purchase
- * Donation
- * Estate Management
- * Ebay and other on-line sites

eMail : info@HarmersInternational call or fax

GENERAL FOREIGN



396 ex

- 396 ☐ Argentina Air Post Zeppelins: 1930 5 covers and 2 PPC, 6 dated 21 May 20, one 29 JUN 34 all but 1 bearing singles 1 or 2 copies of C28 plus other values from issue, 6 to NYC, 1 to Germany - Attractive Group,..... Est. Cash Val. \$300 - 350.



397



398



399

- 397 ☆ Argentina Officials; 2c green Horizontal Overprint, unused, fine and rare(024a) \$450
- 398 ☆ Lombardy-Venetia; 1863 Double Eagle 15s yellowish brown, perf 14, o.g. 'pin hole' which is in fact a removed inclusion, fine, Sismondo Cert. (2006). Michel 18. Sassone 40 (19) \$12,000
- 399 ☆ Dominican Republic; 1868 1/2 real on greenish pelure paper, o.g., margins all around, light creases, fine(16) \$260



400

- 400 ☐ **France 1862, Napoleon III perforated, 40c orange on yellowish, 20c, 10c, rough perf and one vertical crease; all tied by "352" in lozenge cancels on commercial paper wrapper; "some short back flaps"; bearing PARIS 2 DEC c.d.s., manuscript "Papiers D'affaires, avec Lettre explicative", A colourful and rare three-colour double rate letter purchased from Roumet for \$925 in 2008. Yvert 23 (27,26,25),** Est. Cash Val. \$100 - 150

- 401 ☐ **France Postage Due, 1884, 1fr brown, fine but trimmed corner, tied by triangle on legal sized U.S.2c green stationery envelope bearing U.S. Bank Notes 1c blue, 2c green tied by CLEVELAND APR _ duplex and "T" in circle, to Paris, Extremely rare usage. Yvert 25(J26, ect.)** \$1,700.



401

Germany



402



403 ex

- | | | | | |
|-----|---|--|----------------|-------------|
| 402 | O | Württemberg 1873 70K red violet, neat clear cancel, good margins all around, bright colour, trivial thin spot barely detracting from this lovely stamp, very fine, Wallner Cert. (1965) signed Dr. Wallner, Buhler handstamp | (53) | \$4,000 |
| 403 | ☐ | Zeppelin Flown; 6 covers and 5 PPC, 5 covers 1928-29; 5 1936; 2 Olympic frankings; including 1930 Zeppelins (2) with 2m (3) with 4m \$500 stamps alone,..... | Est. Cash Val. | \$200 - 250 |
| 404 | ☐ | Zeppelin South America: 1930 2m blue, 4m brown, tied respectively on 18.5.30 PC and envelope to Argentina, fine | (C38, 39) | \$850 |



404 ex



405 ex

- 405 ☒ Air Post Zeppelins South America Flight: 1930 2m blue, 4m brown, tied respectively on 18.5.30 PC and envelope to Argentina, fine(C38,39) \$850.



406 ex

- 406 ☒ Air Post Zeppelins South America Flight: C43-45 Chicago Flight Set of 3, 1m,2m, tied by 14.20.33 c.d.s. strikes on PC, 4m tied by 14.10.33 c.d.s. on envelope both to NYC, very fine and fine(C43-45) \$1,175



407 ex

- 407 ☒ Air Post Zeppelins: Chicago Flight Set of 3, 1m, 2m, 14.10.33 c.d.s. strikes on PC, 4m 12.10.33 c.d.s. on faulty Registered envelope, both to NYC, fine(C43-45) \$1,175



- 408 O Italian State: Tuscany; 1859, 9cr gray lilac, typical cancel, margins all around to barely touched at top right if at all, fine, Avi Cert. (2018). Sassone 16a (16) \$6,250
- 409 ☆ Italian Post Offices Abroad: 1878 20c orange overprinted "ESTERO", unused, fine, Sismondo Cert. (2017). Sassone 11(7) \$2,600

Persia (Iran)



410



411

- 410 ☆ 1876, 2 shahis, black, Type B, o.g., large margins all around, strong impression, extremely fine, Sadri Cert. (2017)(17) \$1,000
- 411 O 1878 5kr violet bronze, Type C, lightly cancelled by TEHERAN c.d.s., very fine, Sadri Cert. (2017)(39) \$4,000

Only about 500 printed, very few survive.



412 ex



413 ex

- 412 ☆ 1902, 1c - 50k, set of 10, Teheran type handstamp in rose, o.g., very fine, Signed Sadri (with positions)..... (247-257) \$2,035
Rare set.
- 413 ☆ ☆ 1956-57, Set of 17 complete, 100r sheet margin copy, never hinged, very rare and very fine(1058A-1072) \$909

COVER CONDITION

Minor faults including, but not limited to, file folds not affecting stamps, small tears and some backflap damage have not been noted in the descriptions of this catalogue and are not grounds for returns.

Switzerland



414



415



417



416

- | | | | | |
|-----|-----|--|--------|-------|
| 414 | ☐ | 1934, NABA Souvenir Sheet of Four (wrinkles) canceled by ZÜRICH 7 x 34.11 Expo c.d.s. on Registered Expo envelope with label on reverse, to NYC. Zumstein VIII 1 | (226) | \$700 |
| 415 | ★ ★ | 1940, Pro Patria Souvenir Sheet, never hinged, very fine. Zumstein 12..... | (B105) | \$325 |
| 416 | ☐ | 1940, Pro Patria Souvenir Sheet, tied by ZÜRICH 1 VIII 40 c.d.s. on Registered cover to NYC. Zumstein 12 | (B105) | \$775 |
| 417 | ★ | Uruguay; 1856 60¢ blue, unused, basically margins three sides which is considered very fine for this issue, Estudio 20 Cert. (1999) | (1) | \$450 |

~ Collections & Various ~
Collections & Various



418 ex

- | | | | |
|-----|-----|---|---|
| 418 | ☆ O | <p>British Commonwealth; 19th and Early 20th Century: A wonderful offering of a few thousand stamps housed in only Two Red Stanley Gibbons Imperial Albums. Real strength in Africa with excellent B.C.A./Nyasaland, Tanganyika, Sierra Leone also Straits Settlements. The Rhodesia “Double Heads” are offered elsewhere in the catalogue as are numerous highlights of the Collection. There is virtually no G.B. only a smattering of BNA and BWI. Stamps are in mounts and often have used duplicate underneath to moderate value. There are many a,b,c, etc. SG numbers. Purchased by the American Collector whilst living in London in the late 1960’s to late 1970’s. He purchased primarily from the Houses of Harmers and Stanley Gibbons. Colours are very fresh, hinging a bit heavy at times. Many hard to find stamps</p> | <p>Est. Cash Val. \$25,000 - 35,000</p> |
| 419 | ☆ O | <p>British & Foreign Collection & Various - The most eclectic assemblage of stamps we have seen in a long time., Penny Blacks 4 (1 unused?) 1 cover, 15 non-contemporary proofs, five different colours, 2 VR; St. Vincent - those infamous 40th Royal Wedding inverted centers 3 sets; Spain Lindbergh head missing block of four. All these accompanied by the most insane invoices you have ever seen PLUS a collection of turn of the century Paraguay, some early St Helena, Colombian errors, Armenia, Egyptian Consulate Circular labels, China 1930’s -12’s cover to Germany with Nazi censor wrapper PLUS all four German Air Post Sets o.g. and used with 2 reprints and 1 Forgery. Enjoy yourselves on this one,</p> | <p>Est. Cash Val. \$800 - 1,000</p> |
| 420 | ☆ O | <p>British and Foreign 19th & 20th Century, The property as received, mostly used, housed in 21 stock books, 5 sparsely filled albums, U,N, Collection, presentation books, ring binders, much sorted and easy to break down, plus a large G.B. Royal Mail Bag half filled with loose. Plenty of everything,</p> | <p>Est. Cash Val. \$500 - 600</p> |
| 421 | ☆ O | <p>British Commonwealth; A diverse group of 25 items, starting with India; 1a red, George VI proof pair, 6 Specimens, 5 lion & palm tree “proofs”; Ghandi Service 1 1/2s, l.h.; Barbados Britannia imperforated pair; Cape of Good Hope #165; Great Britain S.G. #262; 3 Ionian unused; Nyasa 3p; Ireland 10sh; Tasmania; 1sh; Rhodesia 106c, South Africa S.G. 49 n.h.; all original or unused except Cape of Good Hope and Great Britain. Useful for the internet</p> | <p>Est. Cash Val. \$350 - 400</p> |
| 422 | ☆ O | <p>British Asia Australasia, Selection of 43 o.g. and n.h. stamps, plus 2 used, in dealer envelopes and auction lot sheets, comprising Sarawak \$700, No. Borneo \$234, Japanese Occupation of Malayan States \$225, India \$163, Fiji \$187 and misc. \$150, some not counted, generally very fine.....</p> | <p>Est. Cash Val. \$200 - 250</p> |



Photos of many of the large lots can be found online

Collections by Country or Area

- 423 ☆ **Burma; 1938 to 1947 Issue Complete except 1st Regular and 1st Offices**, mounted on 5 album pages, l.h. to o.g., fresh colours and gum, also Revenue Court Fee values, n.h. four KGV/one KG VI (not counted), fine to very fine..... SG 18b-82;O15-53 £1,042 as singles
- 424 ☆ ☆ **Canada 1890's to 1948 SMALL DEALERS STOCK, housed in 2 small counter books all neatly identified, catalogued, described and priced. Vast majority n.h., strong Admirals and popular sets, some back of the book, key items, very clean, mostly very fine..... (53 to 200's)** **\$8,000 about**
- 425 ☆ O **Canada & Provinces; 1850's to 1970's few hundred in Scott Speciality Album**, used to about 1920's o.g. thereafter, usual better sets o.g. including Parliament, Monument (both \$1.00's used), Destroyer, Ferry, etc., Officials, Airs, bit better Newfoundland fresh and generally, fine to very fine.....Est. Cash Val. \$300 - 500.
- 426 ☆ O **Canada; 20th century Remainder comprising collection of a few hundred, Admirals 50¢, \$1.00, also Monument, Chateau Destroyer, booklets, Back of the Book (catalogue about \$1,400), plus a very nice selection of perfin. O.H.M.S. mostly 4-dot Chateau Destroyer, Ferry, etc. (Catalogue about \$1,300), plus 2 Van Dam Revenue albums sparsely filled and some loose counter book pages and Disney stamps, etc.,** Est. Cash Val. \$300 - 400
- 427 ☆ ☆ / ☆ O **British North America Primarily 19th Century Remainder Group, from a collection, a few hundred n.h. to used. Majority used provinces, highlights include o.g. Cartier set and 4 "gem" stamps #60 used, #89, 227, E2 n.h.,.....** Est. Cash Val. \$250 - 350
- 428 ☆ ☆ / ☆ **Gold Coast; 1883-1954, fresh collection of 47 o.g. stamps, on 1 stock page, includes 3rd issue of 9, 1894 20s, 2 George VI issues and Elizabeth 1952-54.....** SG £561

Great Britain

- 429 ☆ **Victoria; Line-Engraved Remainder Collection 1841 to 1870, 12 o.g. or unused stamps on Leuchtturm Specialized Pages, Includes S.G. 8a, 17.21.22.24.29,40,45,46,47.48, wonderful fresh colours, decent centering, choice group.....** SG £4,832



430 ex

- 430 ☆ **Victoria; Surface-Printed Remainder Collection 1855 to 1900, collection of 42 o.g. or unused stamps on Leuchtturm Specialized Pages, very fresh colours, high values expected to have some faults, better include S.G. numbers 66a, 117,139, 150, 157 (2), 158, 159, 163 (2), 181 etc. a better selection than normally seen.** SG £13,800

- 431 ☆ **Edward VII 1901 to 1913, Group of 61 generally o.g. stamps, mounted on Leuchtturm Specialized Pages, 1 set complete to 5 sh, some duplicate shades as listed in S.G., fresh bright colours, also includes 2 used copies of 5sh #318, fine to very fine. S.G. between 287 & 318.....** SG £3,932
- 432 ☆ **George V 1911 to 1936 Collection of 120 o.g. stamps, includes 8 Sea Horses, all mounted on Leuchtturm Specialized Pages, fresh bright colours, S.G. #402 some perf. gum stains otherwise fine to very fine.** S.G. between 400 & 460 SG £5,155 some not counted
- 433 ☆ **George VI, 1937 to 1951 Collection of 105 o.g. stamps, mounted on Leuchtturm Specialized Pages, issues complete with some watermark varieties, duplicates of several sets including 1939-40 set to £1, very fresh colours, fine to very fine** S.G. 462-514 SG £1,600
- 434 ☆ ☆ / ☆ **Elizabeth II 1952 to 1985 collection of a few hundred, in Scott and Leuchtturm Albums n.h. to l.h. all very fresh, including some Castle sets, watermark varieties, booklets, etc.,** Est. Cash Val. \$200 - 300
- 435 ☆ **Postage Dues; 1914 to 1975 Issues complete except S.G. D9, on Leuchtturm Specialized Pages, l.h. to o.g. fresh bright colours, fine to very fine** S.G. D1-D89 except D9 SG £1,980

436	☆	Officials: 1882 to 1904 a Superior Group of 20, o.g. stamps mounted on Leuchtturm Specialized Pages, fresh bright colours. S.G. #061 without gum, with four Royal or BPA Certs., fine to very fine.....S.G. between O13 and O92	SG £3,120
437	☆	Expeditionary Forces: 1907 to 1955 small collection of 170+ stamps, on Scott pages, l.h.to o.g., primarily George VI and Elizabeth sets, very fine.....	SG £1,700+
438	O	1854 - 1937 Collection a couple hundred used stamps, on annotated quadrille pages, many identified towns, duplicates, sets, perforations, plates. Some mixed condition, but useful for the specialists(14 to 234)	\$5,000+
439	☆ O	Revenues, 19th and 20th Century, many hundreds on album pages, neatly organized, all areas, many embossed, values to £15, great, great variety, fun to inspect, few documents,.....Est. Cash Val.	\$300 - 400
440	☆ O	Heligoland: 1867 to 1890 selection of 282 stamps, 62 perhaps "used" usual selection of genuine re-prints, forgeries, etc., etc. We feel this group may have a decent number that are genuine - Photos on line. Good luck..... Est. Cash Val.	\$200 - 300
441	☆ O	India; 19th and 20th Century Collection of Several Hundred, in Minkus Specialized album, earlies generally used with some o.g., values 5r, 10r, 25r depending, including Offices, Expeditions, Revenues, States, Complete and short sets, generally fine to very fine.....Est. Cash Val.	\$500 - 750
442	☆ O	India; Revenues, 19th Century about 400 on album pages and dealer counter pages, more or less organized, including some large and a few documents. Very varied and fascinating.....Est. Cash Val.	\$300 - 400
443	⊠	Persia; 1885 to 1898 Special Group of Five Covers, bearing 1885 5c, 1894 4c, 1898 2c (2 pairs) to Constantinople, 1898 2c (pair and strip of three) and 1898 2c, 5c, 12c used to G.B. Very attractive. (59A, 92, 105, 105, 105-108-111).....Est. Cash Val.	\$150 - 200
444	⊠	Persia/Iran 1900's cover groups, comprising 1909 Coat of Arms, 5 documents with 3 parcel post receipts, 2 announcements of delivery, colourful, some faults, plus 1942-73 group of 32 covers including Avicenna issues, aerogrammes, Coupon-Response ,M.O.P. free frank, Registered cover to Austria. Useful,Est. Cash Val.	\$100 - 125

Revenues

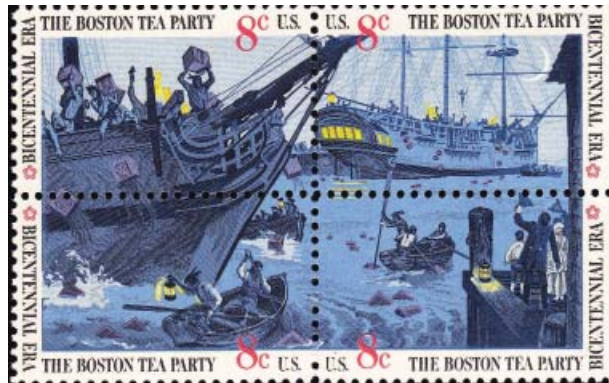
Also see lots 120, 121,123, 439 and 442 for additional Revenue Collections

445	☆ O	British Commonwealth: Revenues; 19th and 20th Century hundreds and hundreds, on album and stock pages alphabetically listed, strong Africa, Asia, Australian States (no G.B. of India) some catalogued by Barefoot, values £25, fascinating selectionEst. Cash Val.	\$500 - 1,000
446	O	Foreign Revenues: 19th & 20th Century, many hundreds on stock and album pages in three binders, strength in German States, Hungary, Greece, Italy, South America, some British Commonwealth etc. Great variety, a fair amount organizedEst. Cash Val.	\$300 - 400
447	☆ O	Spain & France: Revenues;19th and 20th Century: About 1000, on stock pages fairly well organized, sets, colours, embossed etc. Est. Cash Val.	\$300 - 400
448	☆ O	Scandinavia & Central Europe: 19th & 20th Century to 1970's, few thousand stamps housed in three Scott Specialty albums, mostly used with many complete sets and back-of-the-book, strength in Austria, Sweden, Czechoslovakia, very fresh and generally fine to very fine.....Est. Cash Val.	\$500 - 750
449	☆ O	South Africa Officials 1930 - 47, 1961 Group of 62 stamps, o.g. and used, on piece. blocks, comprising 1/2d black & green, 1d black & carmine, 6d green & orange, including "stops", "split tree", plus D45 block of 10 used, great study, fine to very fine.SG 12,a,b,13a,b,16,a,b,D45	£1,250+
450	☆ O	South Central America & Mexico 19th & 20th Century thousands of stamps, housed in 6 Scott Specialty Albums, o.g. and used, complete mixed and short sets, usual lots of Air Post better Argentina, Also British Guiana and Honduras, French Guiana, Inini, Surinam and Canal Zone, very fresh and generally fine to very fineEst. Cash Val.	\$1,400 - 1,600
451	☆ ⊠	Switzerland: 20th Century, 2 Collections, First - Swiss Flown Covers 1924 to 1951 Exhibition Collection STIPEX 1976 3rd, 18 covers, 6 before 1925, also PRO PATRIA ,PRO JUVENTUTE (2) AARAU (3); Second - 1919 to 1955 12 o.g. or n.h. sets and SS including C1,2 NABA SS ,AARAU SS, PRO JUVENTUTE SS, plus more. Most on pages,.....Est. Cash Val.	\$750 - 1,000

World-Wide

- | | | | |
|-----|-----|---|--------------------|
| 452 | ☆ ○ | 19th & 20th Century to 1960's, Thousands and thousands of o.g. and used stamps in 12 Scott International Albums including British Commonwealth and some U.S., numerous complete, mixed and short sets, more l.h. in newer issues CHINA quite good. Very fresh and generally fine to very fine, Also some loose in envelopes and stock books..... Est. Cash Val. | \$3,500 -
4,000 |
| 453 | ☆ ○ | 19th & 20th Century to 1950's, comprised of thousands of stamps in 2 Scott International album with sets and short sets, presentation booklets and one fat 75th Anniversary UPU book plus a PEX-IP sheet usual varied condition especially in earlies..... Est. Cash Val. | \$1,000 -
1,250 |

End of Sale - Thank you



IMPORTANT NOTICE ABOUT SALES TAX:

As a result of the U.S. Supreme Court decision in *South Dakota v. Wayfair, Inc.*, et al. (No.17-494, 06/21/2018) many states have adopted and are in the process of adopting regulations that will require businesses that have customers in those states to collect and remit sales tax. Each state is now free to set its criteria to determine which sellers are required to collect the tax. We hope Congress will act to ease the burden on businesses. Until Congress acts, Harmers International, Inc. is currently obligated to collect sales tax in the following state(s) unless you provide a valid resale certificate:

New York

Nothing has changed for New York State residents.

The Collectors Club... more than just a pretty façade.

The Collectors Club, home to New York's leading philatelists since 1896, is delighted to be hosting sales by some of the most storied and respected names in the philatelic auction business.

Names like **Harmer's International**, a firm with a history as venerable as the club's.

The Collectors Club is proud to have their support and grateful for this opportunity to remind those who are not already members about the many benefits available.

Benefits like a world-famous philatelic library, an award-winning scholarly journal and regular lectures and displays on a wide variety of subjects. And above all, a chance to socialize and dine with like-minded collector friends.

Reach out today – online, by phone, by mail, or on a personal visit – to learn more.



22 East 35th Street, New York, N.Y. 10016 • 212-683-0059

www.collectorsclub.org

Facilities for the mail-bidder

1. Where you want one of several similar lots, bid on all such lots adding an "or" between.
2. If you want to limit your purchases, simply insert the amount on the face of the bid form. When the limit is reached, subsequent bids will be deleted.
3. Postal viewing can be arranged. Please call our offices for details.
4. Valuation of lots in which clients are interested are provided upon request.

5. "Buy" bids are respectfully declined to prevent misunderstandings. Instead, please give your maximum bid and we will, as always, endeavor to save you as much as competitive bidding will permit.

6. Prices realized will be posted on our web site.

7. We will confirm receipt of your bids by phone, fax or Email. Please contact us if your bids have not been acknowledged 24 hours prior to the stated auction date.

8. On-Line, TelCon and Phone bidding is available. Contact us at 212.532.3700 or www.HarmersInternational.com.

New Bidders

If you are not a recognized Harmers International, Inc. bidder, please complete our New Bidder Registration Form.

You will be requested to submit three auction house / dealer credit references or may be asked to submit a deposit.

- Thank you

----- fold here and seal -----

HAVE YOU:

- ☐ Checked your bids?
- ☐ Entered the Date of Sale?
- ☐ Checked your name and address?
- ☐ Signed the form?

Please, for your security, **DO NOT** include any Credit Card Information on this form.

Harmers



International Inc.

www.HarmersInternational.com
Ph. 212-532-3700

**NOT Affiliated with
H.R. Harmer, Inc.**

----- fold here and seal -----

Place
Stamp
Here

DATED BIDS
- IMPORTANT-

Harmers International, Inc.
1325 Echo Hill Path
Yorktown Heights, NY 10598
U.S.A.

CONDITIONS OF SALE

THE PLACING OF A BID SHALL CONSTITUTE ACCEPTANCE OF THE CONDITIONS OF SALE

BIDDING

1. Unless announced otherwise by the auctioneer, all bids are per lot, as numbered in the printed catalogue applicable to such auction (the "Catalogue"). Harmers International, Inc. (hereinafter "Harmers"), as agent for the consignor or vendor, shall regulate the bidding and shall determine the manner in which the bidding shall be constructed. Harmers reserves the right to withdraw any lot prior to the commencement of bidding (without liability to any potential purchaser or agent), to re-offer any withdrawn lot, to divide a lot and to group two or more lots belonging to the same consignor or vendor. Harmers has the right to refuse any bid believed not made in good faith, demand a cash deposit from anyone prior to bidder registration, or demand payment at the time the lot is knocked down to the highest bidder for any reason whatsoever. Harmers requires new customers submit a bidders registration form at least ten (10) days prior to the auction.
2. The highest bid acknowledged by the auctioneer shall prevail. Should a dispute arise between bidders, the auctioneer, in his sole discretion, shall determine who is the successful bidder and whether to re-offer the lot in dispute. Should a dispute arise after the sale, the auctioneer's sale records shall be conclusive.
3. **On all lots sold, a commission of 18% on the hammer price is payable by the buyer to Harmers.**
4. (a) The auctioneer reserves the right to bid on behalf of clients (and consignors or vendors) but shall not be liable for errors and omissions in executing instructions to bid, however received, notwithstanding whether such errors or omissions are those of the bidder, the bidder's agent or the auctioneer.
(b) All lots are offered subject to a reserve price. The auctioneer, at his discretion, may implement such reserve price by bidding on behalf of the consignor or vendor.
(c) It may also be assumed that all consignors have been advanced monies against the sale of their stamps and Harmers therefore has a security interest over and above the auction commission.
(d) Purchase made by a consignor or vendor or his agent on his own lots shall be considered as a sale and shall be subject to commissions and sales tax as set forth in these Conditions of Sale.
(e) Agents are responsible for all purchases made on behalf of their clients, unless other arrangements have been confirmed by Harmers in writing prior to the auction.

PAYMENT FOR PURCHASES

5. Payment for lots and the commission payable with respect thereto, including those on which extensions are desired (see paragraph 9 of these Conditions of Sale), shall be as follows:
(a) **Floor Bidders.** Payment of the purchase price and the commission applicable thereto, or such part thereof as Harmers shall require, shall be made by the purchaser in such manner as Harmers may determine. The name and address of the purchaser of each lot shall be given to the auctioneer immediately following the sale of such lot.
(b) **Mail, On-Line and Telephone Bidders.** A successful bidder will be notified of lots purchased. Before Harmers will send such lots, payment in full (including the commission payable to Harmers) must be received by Harmers within three (3) business days of receipt of the aforesaid notification. However, a purchaser known to Harmers, or who furnishes satisfactory references, may, at Harmers' option, have purchases delivered or forwarded for immediate payment in US dollars. Mailed delivery will be to the registered address on the bid sheet and receipt of proof of shipment to the registered address shall constitute delivery. All charges for handling, delivery, and insurance (to the extent obtained by Harmers on behalf of the purchaser) shall be added to the purchase price. Risk of loss in transit shall be on the purchaser.
(c) Credit Card and PayPal Users are subject to an additional 3% fee and may be requested for a bidding deposit.
6. Title shall not pass to the purchaser until full payment has been received by Harmers, as agent for the consignor or vendor.
7. (a) Purchasers agree to pay for lots as specified in paragraph 4 of these Conditions of Sale and no credit shall be extended. A late payment charge of 2% for the first month and 2 ½% for each succeeding month compounded shall be added and Harmers will charge on-file credit cards if payment is not made in accordance with aforesaid conditions.
(b) In the event that a bidder shall fail to comply with these Conditions of Sale ("Non-Complying Bidder"), then, as to any lot with respect to which such failure to comply occurs, Harmers may, at its sole discretion, re-offer such lot during the same auction or at an auction at a later time, or by private treaty at such time at Harmers, at its sole discretion, deems appropriate. The Non-Complying Bidder shall be liable for the deficiency, if any, between the hammer price and the net proceeds of a sale to a subsequent purchaser (whether at auction or by private treaty), as well as for all costs and expenses of both sales, all other charges due thereunder (including commissions with respect to both sales, whether payable to Harmers or to a third party) and all incidental damages related thereto. It shall be at Harmers' sole discretion to determine whether to re-offer the lot theretofore hammered-down to a Non-Complying Bidder at the same auction, or by private treaty in due course, or at a subsequent auction, conducted by Harmers, and in no event shall any surplus

arising from the sale of a re-offered lot be payable to a Non-Complying Bidder.

- (c) A defaulting purchaser shall be deemed to have granted Harmers a security interest in property in Harmers possession owned by such purchaser. Harmers shall have all the rights afforded a secured party under the New York Uniform Commercial Code with respect to such property and may apply against such obligations all monies held or received by it for the account against such obligations all monies held or received by it for the account of, or due from Harmers to such purchaser.
- (d) If Harmers takes any legal steps to secure payment of a delinquent account, the defaulting purchaser shall be liable for all legal and other expenses incurred by Harmers to secure such payment, including but not limited to a reasonable allowance for attorneys' fees. For purposes of this paragraph, the term "legal steps" shall be deemed to include any and all consultation by Harmers with its attorneys with respect to all matters arising out of a delinquent account.

EXHIBITION AND INSPECTION OF LOTS; QUALITY

8. (a) **On Premises Inspection and Postal Viewing.** Ample opportunity is given for on premises inspection prior to the auction date and, upon written request and at Harmers discretion, for inspection by postal viewing (all as detailed elsewhere in the Catalogue).
(b) Each lot is sold as genuine and correctly described, based on individual description as modified by any specific notations in the Catalogue, including but not restricted to the section thereof entitled "Key to Cataloguing".
(c) **Quality.** Any lot which a purchaser considers to be incorrectly described shall be returned to Harmers within two weeks of its receipt by such purchaser ("Returning Purchaser"), provided, however, that the same must be received by Harmers within four weeks of the date of the auction. Any lot, the description of which is disputed, must be returned intact in the condition received by the purchaser. Notwithstanding the foregoing, the following lots are not returnable, except at the sole discretion of Harmers: (i) lots from purchasers who attended the exhibition of lots; (ii) lots examined by postal viewing; (iii) lots on account of their appearance, if they are illustrated in the Catalogue; (iv) lots described as having repairs, defects or faults; (v) U.S. stamps (through 1918) for reasons of paper inclusions; (vi) no encapsulated stamp (unless originally offered in this condition); (vii) lots containing more than ten (10) stamps; and (viii) contradictory grading certificates.
(d) Lots with Existing Certificates less than 5 years of Age. Any lot with a Certificate less than 5 years old is sold "as is" and may not be returned for any reason, including but not limited to a contrary certification of opinion by either the original issuer of the certificate or any alternative certifying agency.

EXTENSION OF TIME FOR CERTIFICATION

9. When an opinion from a "generally recognized authority" is desired by the purchaser:
(a) A request for expertising must be made to Harmers, in writing, within 7 days of the date of the auction. The request must include the name and address of the "generally recognized authority". The "generally recognized authority" must be approved, in writing, by Harmers.
(b) **Harmers, and only Harmers, will submit the item to the agreed upon expert.**
(c) If a lot is certified by a "generally recognized authority" to be other than as described, or the authority declines to express an opinion, this is normally grounds for the return of a lot.
(d) Except to the extent set forth in paragraph 10 of these Conditions of Sale, payment of the expense of certification will be paid by the purchaser.
(e) In the event that a dispute cannot be resolved by reference to a "generally accepted authority" and Harmers thereupon undertakes to re-offer the lot with a description identical to the description disputed, the Returning Purchaser shall be liable for the deficiency, if any, between the proceeds of the sale to the Returning Purchaser and the proceeds of a sale to a subsequent purchaser, as well as for all costs and expenses of the re-sale, including commission, and all incidental damages.

EXPENSES OF CERTIFICATION

10. Expenses of certification shall be borne by the purchaser, except where a lot is certified "other than as described" and is returned to Harmers in accordance with paragraph 9 of these Conditions of Sale. Expenses incurred in the submission and the return of a lot under paragraphs 8 or 9 of these Conditions of Sale are not refundable, except the cost of the certificate itself.

SALES TAX

11. **Unless exempted by law, a purchaser shall pay any applicable State and local sales taxes, or any compensating use taxes of any other State or government authority (collectively, "Taxes"). A purchaser claiming an exemption from payment of any Taxes shall provide evidence acceptable to Harmers of such exemption APPLICABLE LAW, JURISDICTION, ETC.**

12. All matters arising out of this auction shall be governed by the laws of the State of New York, without giving effect to the choice of law principles thereof.
13. Any controversy or claim arising out of or relating to this auction shall be settled by a court located in Westchester County, State of New York.
14. The purchaser at auction (a) consents and submits to the jurisdiction of the Courts of the State of New York and of the Courts of the United States for a judicial district within the territorial limits of the State of New York for all matters arising out of the auction sale, including with out limitation, any action or proceeding instituted for the enforcement of any right, remedy, obligation and liability arising under or by reason thereof; and (b) consents and submits to the venue of such action or proceeding in the County of Westchester and Country of New York (or such judicial district of a Court of the United States as shall include the same).

Tuesday
July
23,
2019

