

# United States, British Commonwealth & Foreign



Tuesday, July 31, 2018

AT THE COLLECTORS CLUB, NYC

Harmers



International Inc.

Not Affiliated with H.R. Harmer

THE "DIRECTOR'S" U.S. ESSAYS \* RICHARD MAISEL BRITISH AMERICA

GEORGE MAGNANI U.S. \* ARTUR LERBS INDIA

WILLIAM L. FAISSLER AUSTRALIA



# KEY TO CATALOGUING

## SYMBOLS

* Unused	** Never hinged	O Used
☒ On cover	Δ On piece	S Specimen
⊕ Block of Four	⊞ Block larger than four	E Essay
TC Trial Colour	DP Die Proof	PP Plate Proof

## MAJOR ABBREVIATIONS

c.d.s. = Circular Date Stamp; C.T.O = Canceled to Order;

F.D.C. = First Day Cover ; ms. = Manuscript; var. = Variety

### CONDITION

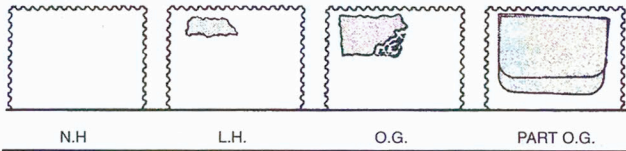
The various gradings of stamps are, in order; superb, extremely fine, very fine, fine. In the case of sets, large blocks, sheets, etc., the condition quoted represents the average, and quality above and below this standard can be expected.

**Mixed Condition:** In large lots, the condition is generally expected to range from fair to at best fine. Serious defects can be expected.

**Handstamp on reverse:** Denotes either a dealer, collector or indecipherable expert's mark.

**Signed by:** Denotes either the actual signature or mark of the expertiser. The absence of mentioning a signature does not reflect on the ability or knowledge of the party involved

### GUM:



Shaded portion can represent an actual hinge or the area disturbed by a hinge.  
n.h. = Never Hinged – unused with original gum in Post Office state and unmounted.

l.h. = Lightly Hinged – unused with full original gum showing some evidence of a previous hinge which may be present in part or entirely removed.

o.g. = Original Gum – unused with original gum somewhat disturbed by previous hinging which may still be present.

part o.g. = Part Original Gum – unused with original gum, large hinge remnants may or may not be present.

disturbed o.g. = Disturbed Original Gum – unused with original gum affected by sweating, glazing or mount disturbance; may not resemble the original gum.

unused = Unused without gum.

Ungummed = Unused without gum, as issued.

**BLOCKS OR SHEETS AND THEIR GUM:** Minor separations are the rule rather than the exception, in the case of blocks or sheets of any size. A few separations, around four perfs. per row, do not affect the value of a block or sheet and are not grounds for the return of a lot.

**CATALOGUE VALUES:** The final column shows the catalogue value of the lot.

**ESTIMATED VALUES:** If the estimated cash value is given, it is shown in the description and always indicated by the abbreviation "Est. Cash Value". It is used where the lot is large or where the actual value has little relation to the catalogue price. It represents the auctioneer's appraisal of the true MARKET value of a lot.

**PLEASE NOTE – CREDIT CARDS :** A 3% fee will be charged to credit card and PayPal users and a bidding deposit may be requested.

**OVERSEAS BUYERS:** We require that payment be made by credit card, bank draft, wire, or cheques in U.S. dollars made payable on a U.S. bank.

### BIDDING LEVELS

Up to \$ 150	\$5
\$150 - \$300	\$10
\$300 - \$600	\$25
\$600 - \$1,500	\$50
Over \$1,500	approx. 5%

Bids which do not conform to the above will be automatically reduced to the correct level.

### BIDS BY TELEPHONE

- A) Reservations must be made at least 2 days prior to the sale.
- B) Any errors are the responsibility of the bidder.

### BIDS BY FAX or E-MAIL

Must be received no later than 2 hours before the session commences.

And **MUST** be confirmed by a reply from a Harmers International representative.

Fax: 914.962.5885 E-Mail: [bids@harmersInternational.com](mailto:bids@harmersInternational.com)

### VALUATION OF LOTS

Valuations of all lots are available the week prior to the auction upon request.

### GUM DESCRIPTION

Recognizing that there are occasional differences of opinion concerning gum nomenclature by various expert committees, for example, a stamp described as o.g. being certified as large part o.g. or even part o.g., this minor classification discrepancy alone is not sufficient grounds for return.

### COVER CONDITION

Minor faults, including but not limited to file folds, not affecting stamps, small tears and some back flap damage have not been noted in the descriptions and are not grounds for return.

### REGISTERING TO BID IN OUR SALE

Bidders must be registered to participate in Harmers International Auctions. Bidder registration forms are included with catalogues, are available on our web site, [www.HarmersInternational.com](http://www.HarmersInternational.com) or by request.

Trade references are required (no societies or clubs). Dealers must provide a copy of their Resale Certificate to avoid NYS sales tax.

### ONLINE BIDDING

Live on-line bidding is available. We are not responsible for technology issues that may impact communication of bids.

### EXTENSIONS AND EXPERTISING

Any lots placed on extension for expertising **MUST** be submitted by Harmers International, Inc.. Submission by the purchaser will nullify any extension request. Therefore, upon notification of purchase, please contact us with the lot numbers you wish submitted and the expert.

### Auction Agents

Charles E. Cwiakala  
1527 S. Fairview Ave.  
Park Ridge, IL, 60068 U.S.A.  
Tel/fax (847) 823-8747  
[CECwiakala@aol.com](mailto:CECwiakala@aol.com)

Pursers & Associates  
P.O. Box 369  
Bronxville, NY 10708  
Tel. (857) 928-5140  
Fax: (781) 777-1023  
Email: [info@pursers.com](mailto:info@pursers.com)

Jean-Claude Michaud  
15 Briarwood Crescent  
Halifax, NS B3M1P2 CANADA  
Tel. (902)443-5912  
Fax (902)445-5795  
Email: [jcm.ph@ns.sympatico.ca](mailto:jcm.ph@ns.sympatico.ca)

Trevor Chinery  
9 St. Laurence Way, Stanwick  
Northamptonshire NN9 6QS  
England  
Tel: (044) 1205 330 026  
Fax: (044) 1933 622 808  
Email: [TrevorTrilogy@aol.com](mailto:TrevorTrilogy@aol.com)

Frank Mandel  
P.O. Box 157  
New York, NY 10014 U.S.A.  
Tel. (212)675-0819  
Fax. (212) 366-6462

John Beddows  
Box 24083  
Josephine PO  
North Bay, ON P1B 0C7  
Tel: (705) 495-3134  
Fax: (705) 495-3134  
[jlw@onlink.net](mailto:jlw@onlink.net)

Nick Martin  
Angel House, Station Road  
Lincolnshire PE20 2JH  
United Kingdom  
Tel (44) 120 546 0968  
Cel. (44) 0770 376 6477  
Email: [Nick@loveauctions.co.uk](mailto:Nick@loveauctions.co.uk)

Jochen Heddergott  
Bauerstrasse 9  
D-8000 Munchen 40 GERMANY  
Tel. (089) 272-1683  
Fax (089) 272-1685  
Email: [mail@philagent.com](mailto:mail@philagent.com)

SALE Number NINE

## UNITED STATES, BRITISH COMMONWEALTH, & FOREIGN

*The “Director’s” U.S. Photographic Essays*

*The Richard Maisel British America*

*The “George Magnani” U.S.*

*The A. Lerbs India*

*The “William Faissler” Australia*

*and the properties of four other owners*

**SALE To take place in New York City at:  
The Collectors Club, 22 East 35th Street  
Tuesday, July 31, 2018 beginning at 1:00 PM**

### EXHIBITION OF LOTS

July 30 & 31st at the Collectors Club from 10am to 6pm or by Appointment

To be sold at Auction by



Office Located at: 1325 Echo Hill Path, Yorktown Hts, NY, 10598

Telephone: (212) 532.3700

Fax: (914) 962.5885

Email: [info@HarmersInternational.com](mailto:info@HarmersInternational.com)

Keith A. Harmer – Licensed Auctioneer, License Number 1345246

On all lots sold a commission of 18% on the hammer price will be payable by the buyer (additional internet bidding surcharge may apply refer to your bidding platform)

This firm subscribes to the ASDA code of ethics for auction firms.

**Friday, 12 May 2017**

**1:00 P.M.**

**UNITED STATES**

**Photographic Essays**

The following 11 lots comprise a wonderful collection of Black and White Photographic Die Essays on Card from the 1930's.. They are mounted on exhibition type pages with at least one, and often many of each issue. All are actual size, are hinged and very fine.

They are from the L.W. Robert Jr. Presentation Album. Mr. Robert was a friend of F.D.R. and the Assistant Treasurer of the United States (1933 - 36)

The photographs of these lots, as originally presented on the pages, are available on our website or On-line Bidding Platform.

1	E	1932, 2¢ Arbor Day, two plus a stamp, plus documentation on the production of the stamp, includes photos and negatives of the changing of the house in the background, articles, a sheet, covers all the material from the Hall family and only rightly from the boy and girl who posed for the stamp (717E). ..... Est. Cash Val.	\$500 - 750
2	E	1932, 3¢,5¢ Summer Olympics, 20 in total. Similar to those sold in our May 12, 2017 auction, also includes issued stamps with a signed block of 4 of the 3c (718,719E).....Est. Cash Val.	\$1,500 - 1,750
3	E	933, 1¢,3¢ Century of Progress, similar to those sold in our May 12, 2017 auction, comprising 1¢ (9), 3¢ (4) 13 in total. (728,729E). ..... Est. Cash Val.	\$1,250 -1,500
4	E	1933, 3¢ Byrd Antarctic, seven, similar to those sold in our May 12, 2017 auction (733E)..... Est. Cash Val.	\$500 - 750
5	E	1933, 5¢ Kosciuszko, twelve, similar to those sold in our May 12, 2017 auction (734E)..... Est. Cash Val.	\$750 - 1,000
6	E	1934, 3¢ Mother's Day, 17 in total plus a stamp, similar to those sold in our May 12, 2017 auction (737E).. ..... Est. Cash Val.	\$1,250 -1,500
7	E	1934, 1¢-10¢ National Parks, comprised of 1¢(5), 2¢(2), 3¢(1), 4¢(1), 5¢(2), 6¢(2), 7¢(11), 8¢(2), 9¢(1), 10¢(6) 33 in total, similar to those sold in our May 12, 2017 auction (740-749E).....Est. Cash Val.	\$3,000 -4,000
8	E	Airmail, 1933, 50¢ "Chicago" Zeppelin, 7 decidedly different, wonderful group, virtually the same set that was offered in our May 12, 2017 auction, also includes a lightly hinged block of 4 of C18 which probably does not belong (C18E)..... Est. Cash Val.	\$3,000 -3,500
9	E	Airmail, 1935-37, China Clipper complete, 3 in total, similar to those sold in our May 12, 2017 auction (C20-C22E). .....Est. Cash Val.	\$750 - 1,000
10	E	Airmail Special Delivery, 1934, 16¢ dark blue, 4 in total plus a stamp, similar to those sold in our May 12, 2017 auction (CE1E).. ..... Est. Cash Val.	\$800 - 1,000
11	E	1930s, remainder collection, including Peace (6), N.R.A. (1), Maryland (1) Connecticut (4), California (6), Boulder Dam (8), Michigan (1), 27 total, similar to those sold in our May 12, 2017 auction, housed in the L.W. Robert Jr. Presentation Album (727,732,736,772-75E).....Est. Cash Val.	\$2,000 -2,500

**This lovely group can be seen  
on-line at SAN  
or  
www.harmersinternational.com**



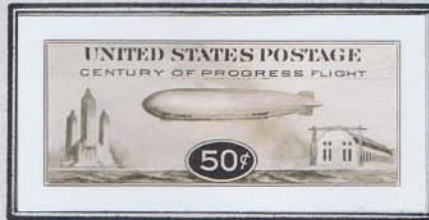


FINISHED STAMP

DIE PROOF



ESSAYS





## The G. Magnani Collection

The following 40 lots comprise a collection of stamps still on their original lot sheets, many with cut out descriptions and cost prices. They were purchased solely from “Simmy’s” in Boston and H.R. Harmer/Harmers of NY/SF from 1976 to 1979 by George Magnani of New Jersey. Portions of the original descriptions may be included and are interesting to compare to today’s standards and pricing.

### 1847 Issue

12	O	<b>5¢ red brown</b> , red grid, large margins all around, extremely fine Grade XF90 \$625. Foundation Cert. (2017) .....	(1)	\$625
13	O	<b>5¢ red brown</b> , neat blue grid cancel, good margins all around, Simmy’s “superb”, actually extremely fine.....	(1)	\$415
14	O	<b>5¢ red brown</b> , red grid cancel, good to large margins all around, Simmy “superb, orange grid”, actually extremely fine.....	(1)	\$375
15	O	<b>5¢ red brown</b> , red grid cancel, good to large margins all around, fresh color, extremely fine .....	(1)	\$375
16	O	<b>5¢ red brown</b> , red grid cancel, nice even margins, Simmy “supurb”, actually extremely fine.....	(1)	\$375
17	O	<b>5¢ red brown</b> , red grid cancel, large margins all around, fresh, extremely fine.....	(1)	\$375
18	O	<b>5¢ red brown</b> , red grid cancel, good to large margins all around, Simmy “4 enormous margins.superb”, actually extremely fine.....	(1)	\$415
19	O	<b>5¢ red brown</b> , indistinct blue cancel, large margins to good one side, Simmy “superb”, actually almost extremely fine.....	(1)	\$415
20	O	<b>5¢ red brown</b> , blue town cancel, good margins all around, Simmy “superb,”, actually very fine.....	(1)	\$500
21	O	<b>5¢ red brown</b> , black grid, good to very large margins at right, very fine.....	(1)	\$450
22	O	<b>5¢ red brown</b> , possible sheet margin copy, rest large showing portion of adjacent stamped at top to close at bottom, socked-on-the-nose blue cancel, very fine.....	(1)	\$415
23	O	<b>5¢ red brown</b> , red grid cancel, clear to good margins all around, very fine .....	(1)	\$375
24	O	<b>5¢ red brown</b> , red grid, well clear to good margins all around, Simmy’s “superb”, actually very fine .	(1)	\$375
25	O	<b>5¢ red brown</b> , socked-on-the-nose red grid, large to clear margins all around, Simmy’s “superb,”, actually very fine. Foundation Cert. (1979).....	(1)	\$375







16 P


n D. Ro  
Card,  
332724-p  
tion, is  
ouple of  
.....

iberty L  
'333289'  
r family  
r and in  
ie. The  
.....



ne  
l. \$1,500 - 2,000

**In an Industry  
Where  
Tradition Matters...**

The Harmers look forward  
to seeing you at the auction.



Keith A. Harmer

Brandon J. Harmer



26	O	<b>5¢ red brown</b> , black grid cancel, good to clear margins all around, showing adjacent stamp at top, Simmy “very fine”, actually fine..... (1)	\$450
27	O	<b>5¢ red brown</b> , red grid cancel, clear to good margins all around, Simmy’s “very fine”, actually fine... (1)	\$375
28	O	<b>5¢ red brown</b> , red grid cancel, good to large margins all around, few creases, Simmy’s “very fine to superb”, actually extremely fine appearance..... (1)	\$375
29	O	<b>5¢ dark brown</b> , light red grid cancel, good margins all around, extremely fine..... (1a)	\$800
30	O	<b>5¢ dark brown</b> , light blue grid cancel, large to very clear margins all around, very fine..... (1a)	\$840
31	O	<b>5¢ orange brown</b> , blue grid cancel, good even margins all around, “tiny corner margin crease”, very fine. Foundation Cert. (2017)..... (1b)	\$790
32	O	<b>5¢ orange brown</b> , light red grid cancel, large to clear margins all around, showing part of adjacent stamp at right, almost very fine..... (1b)	\$750
33	O	<b>5¢ orange brown</b> , blue grid cancel, very good to clear margins all around, almost very fine..... (1b)	\$790
34	O	<b>10¢ black</b> , red grid cancel, large to clear margins all around, almost very fine..... (2)	\$825
35	★	<b>(1875 Reproduction), 5¢ red brown</b> , good margins all around, Simmy’s “deep rich color...superb”, without gum as issued, actually very fine. Foundation Cert. (1978)..... (3)	\$850
36	★	<b>(1875 Reproduction), 10¢ black</b> , good margins all around, Simmy’s “sharp impression...superb”, without gum as issued, actually very fine. Foundation Cert. (1978)..... (4)	\$1,050







- 37 ☆ 1857, 3¢ rose, type I, part o.g. some.....
- 38 P 1860, 24¢ gray lilac, imperf proof on stamp paper, almost very fine.....
- 39 P 1860, 24¢ gray lilac, imperf proof on stamp paper, good Foundation Certs. (1950,1978) as #37c. ....
- 40 ☆ 1888, 30¢ orange brown, o.g., fresh bright color, almost very fine.....



- 41 ☆ 1893, Columbian, 30¢ orange brown, lightly hinged, rich color well centered, extremely, fine, also additional copy o.g. centered low. .... (239) \$450
- 42 ☆ 1893, \$1 salmon, unused, VF-XF 85 very fine to extremely fine. Foundation Cert. (2017) ..... (241) \$800
- 43 ☆ 1893, \$1 salmon, o.g blind perf, fresh, fine..... (241) \$1,000
- 44 ☆ 1893, \$1 salmon, o.g., hinge remnant, fresh, fine..... (241) \$1,000
- 45 ☆ 1893, \$1 salmon, regummed, paper inclusion, fresh, fine..... (241) \$500
- 46 ☆ 1893, \$2 brown red, regummed, centered, very fine appearance ..... (241) \$500
- 47 ☆ 1893, \$5 black, o.g., intense color, weak top right corner perforation, fine..... (245) \$2,300





48



49



50



51

- 48 ☆ 1894, \$1 black, type I, unused, intense color, almost very fine. Foundation Cert. (1978) for block of 4 from which this is the top right stamp..... (261) \$400
- 49 ☆ 1901, Pan-American, 8¢ brown violet & black, o.g., well centered, Simmy's "JUMBO, actually extremely fine"..... (298) \$90
- 50 ☆ 1901, Pan-American, 8¢ brown violet & black, 2 copies, lightly hinged, extremely fine for both, 90. Foundation Certs. (2017)..... (298) \$280 for both
- 51 ☆☆☆ 1915, 2¢ red, type II, horizontal rotary coil, STRIP OF FOUR, few nibbed perforations, right 2 never hinged, left 2 lightly hinged, very fine..... (454) \$525



**GUM DESCRIPTION**

**Recognizing that there are occasional differences of opinion concerning gum nomenclature by various expert committees, for example, a stamp described as o.g. being certified as large part o.g. or even part o.g., this minor classification discrepancy alone is not sufficient grounds for return.**

### U. S. REGULAR ISSUES & BACK-OF-THE-BOOK

- 52 ☒ **1814, War of 1812, folded letter date-lined Washington Jan. 9th 1814**, from Lt. Col. W. Bomford to "Capt. J.H. Reese U.S. Ordinance Dept. Baltimore", regarding "a Contract for the construction of Rockets". There is, in the P.S., also a reference to "mines" and a Captain Babcock, fascinating contents..... Est. Cash Val \$200 - 250

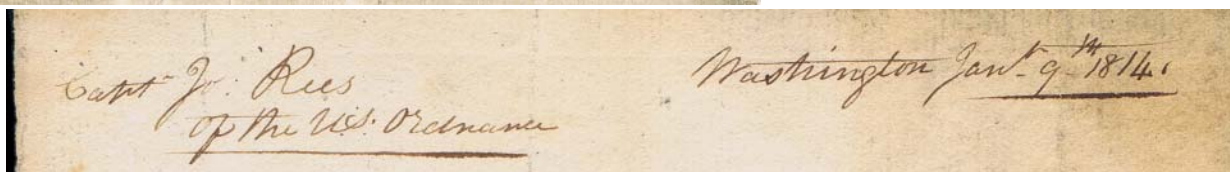
#### Postmasters' Provisionals

- 53 O **New York, N.Y., 1845, 5¢ black on bluish**, good to enormous margins all around showing portions of adjacent stamp at right, extremely fine. Foundation Cert.(1998)..... (9X1). \$475
- 54 ☒ **Used to Michigan, New York, N.Y., 1845, 5¢ black on bluish, ACM connected**, 2 large margin copies left copy just in at left and right copy file fold, tied by magenta pen strokes on July 25, 1846 folded letter, bearing red NEW YORK JUL 26 c.d.s. with matching PAID, very fresh cover to a rare double rate destination)..... (9X1). \$1,150 for used stamps



53

52



54



# 1847 ISSUE



55

55	★	<b>5¢ dark brown, dot in “S” variety, unused, good to large margins all around, deep color and sharp impression, insignificant corner crease in bottom right margin only, very fine. Foundation Cert. (2017) ex. Duckworth. ....(1a var.)</b>	<b>\$7,000 for #1 with gum</b>
<i>Incredibly rare.</i>			

56	O	<b>5¢ red brown, SHEET MARGIN COPY, good to clear other sides, neat red PITTSBURG c.d.s.(rare), bright color, very fine. Foundation Certs. (1986,2017)..... (1)</b>	<b>\$575</b>
57	O	<b>5¢ red brown, distinctive rare magenta, cancel, large to well clear margins all around, rich color, very fine. Foundation Cert. (2002)..... (1)</b>	<b>\$650</b>
58	O	<b>5¢ red brown, red grid cancel, very fine. Foundation Cert. (1987)..... (1)</b>	<b>\$400</b>
59	O	<b>5¢ red brown, Sheet Margin Copy, lovely faint pen-cross cancel and partial light red grid, large margins other sides, fresh bright color, just a lovely stamp, superb. Foundation Cert. (1986). (1).....</b>	<b>Est. Cash Val. \$250 - 300</b>
60	▲	<b>5¢ red brown, red grid cancel, tied on piece, good margins all around, very fine. Foundation Certs. (1977,2017)..... (1)</b>	<b>\$375</b>
61	O	<b>5¢ red brown, blue town cancel, good to clear margins all around, very fine. Foundation Cert. (1984)....</b>	<b>(1) \$525</b>
62	O	<b>5¢ red brown, neat pen cross, good to large margins all around, bright colors, very fine..... (1)</b>	<b>\$200</b>



56



57



58



62



59



60



61



**Words may show a man's wit but actions his meaning ..... Benjamin Franklin  
Bantering about a lot is fine, but bidding is better.**



63



64

- 63  Used to Canada West, 5¢ red brown, PAIR, good margins to touched at left, showing portions of adjacent stamps 3 sides, small faults, just tied by red grids on 1849 folded letter sheet bearing red NEW YORK DEC 19 c.d.s., manuscript. "paid to the lines" and black QUEENSTOWN Dec 2 -1849 receiver, to St. Catherine. Attractive alternative to the more common 10¢ stamps. Foundation Cert. (2017). (1)..... Est. Cash Val. \$300 - 500
- 64  5¢ orange brown, blue Philadelphia octagonal framed PAID cancel, brilliant color, good to very large margins all around, extremely fine. Foundation Cert. (2017)..... (1b). \$800



The "MASKED" FRANKLIN

65

- |    |                          |   |
|----|--------------------------|---|
| 65 | <input type="checkbox"/> | <p>1847, 5¢ red orange, The Masked Franklin, the most expensive 5c shade by far being the last printing and Fifth Delivery (Dec. 7, 1850) just 3 months before the introduction of the new rates and the 1851 Issue, red cancel, maximum to good margins, showing adjacent stamp entirely at right, extremely fine. Foundation Cert. (2017). ..... (1c). \$9,500</p> <p><i>The most distinctive aspect of this unique stamp is the "extraneous ink" across Franklin's eyes. Probably a portrayal of Franklin at a party whilst stationed in Paris or as a highway man who some people thought he was.</i></p> |
|----|--------------------------|---|

See Lot Number 121 for SWART's Combination with 1847 5 cents.

Never confuse motion with action ..... Benjamin Franklin  
When bidding, confirm that you have the bid.





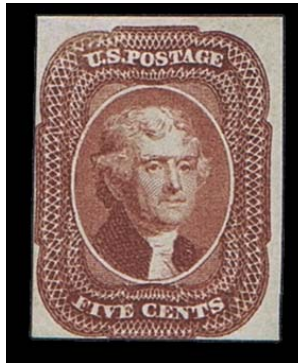
66

- 66  10¢ black, large to very large margins all around (margin copy?), very fine, tied by blue grid on neat blue 1849 double rate folded letter bearing matching blue BUFFALO N.Y. Aug 23 10 c.d.s., to Wilson N.Y., lovely cover..... (2) \$1,100



- 67  10¢ black, good to very large margins all around, tied by blue PHILADELPHIA NOV 5 10 c.d.s. on complete folded letter sheet to Lowell, Mass. The cover is addressed to a "Colour Maker" and makes reference to the needed color blue as printed on front, and refers extensively to the cholera epidemic then taking place in Philadelphia, PLUS manuscript "per Bloods Dispatch" on last page, a most interesting use of advertising, extremely fine. P.S.E. Cert. (1990). (2)..... Est. Cash Val. \$700 - 800

# 1856 5c Red Brown



68

68 ☆ 5¢ red brown, unused, fresh bright color and paper, good margins to just clear at left and touching outer projection at bottom, "tiny repair" in top left margin only, a fine example of a very rare unused stamp. Foundation Cert. (2017)..... (12) \$11,000



<--- 69



<--- 70



71



73



72



74

- 69 O 1851, 12¢ gray black, c.d.s. cancel, good to maximum margins all around, extremely fine. Foundation Cert. (1999). ..... (17) \$250
- 70 O 1861, 3¢ pink, neat Michigan c.d.s., quite well centered for the issue, bright color, almost very fine. Foundation Cert. (1991)..... (64) \$600
- 71 O 1861, 3¢ rose, large INTERPANNEAU copy, light blue green target cancel, corner crease, very attractive (65)..... Est. Cash Val. \$100 - 125
- 72 ☆ 1861, 5¢ buff, neat 7-line grid cancel, true color, fine..... (67) \$750
- 73 ☒ 1861, Used to England, 10¢ yellow green 2 copies, 1¢ blue, 3¢ rose, all tied by red BULTLERVILLE OCT 14 IOA c.d.s., strikes on 1861 envelope (less one flap back) bearing red 19, on reverse HENLEY-ON-THAMES NO 4 61 receiver, very attractive 3-color combination .....(68,65,63)..... Est. Cash Val. \$150 - 200
- 74 O 1861, 12¢ black, neat black Masonic cancel, extremely fine. Foundation Cert. (1986). ..... (69) \$95



- 75    ☒    **1861, USED TO QUEEN VICTORIA WAR OFFICE LONDON OR PLYMOUTH, ENGLAND, 12¢ black**, tied by c.d.s. on orange envelope bearing red NY BR. PKT. SEP 10 PAID 19, on reverse London and Plymouth 1862 receivers (69)..... Est. Cash Val.    \$150 - 200
- 76    ☒    **1861, Used TO ENGLAND, 24¢ steel blue**, rich true color, small tear at top margin only, excellent centering, lovely cover, tied by neat red grid on envelope (top back flap a bit rough) bearing red NEW YORK 19 OCT 61 transit and red LONDON NO 4 61 receiver. Foundation Cert. (2017). ..... ((70b).    \$390
- 77    ○    **1862, 5¢ red brown, neat target cancel, fresh color, almost very fine**..... (75)    \$425
- 78    ○    **1862, 5¢ red brown, very light red cancel, well centered, reperfed, very fine appearance** ..... (75)    \$485
- 79    ☒    **1863, MARRIAGE CERTIFICATE; 5¢ brown**, fresh bright fine copy, just tied by dated manuscript on "recorded and filed March 17 1864", 1 page (lined paper) Wisconsin handwritten marriage cert. signed by the Chaplain, can be opened and exhibited (76)..... Est. Cash Val.    \$200 - 225
- 80    ○    **1867, 12¢ black, E. Grill, unused**, bright fresh color, well centered, large copy for this issue, "small toned spot" which we cannot see, still very fine. PSAG Cert. (2016)..... (90)    \$1,900



<-- 75



77



78



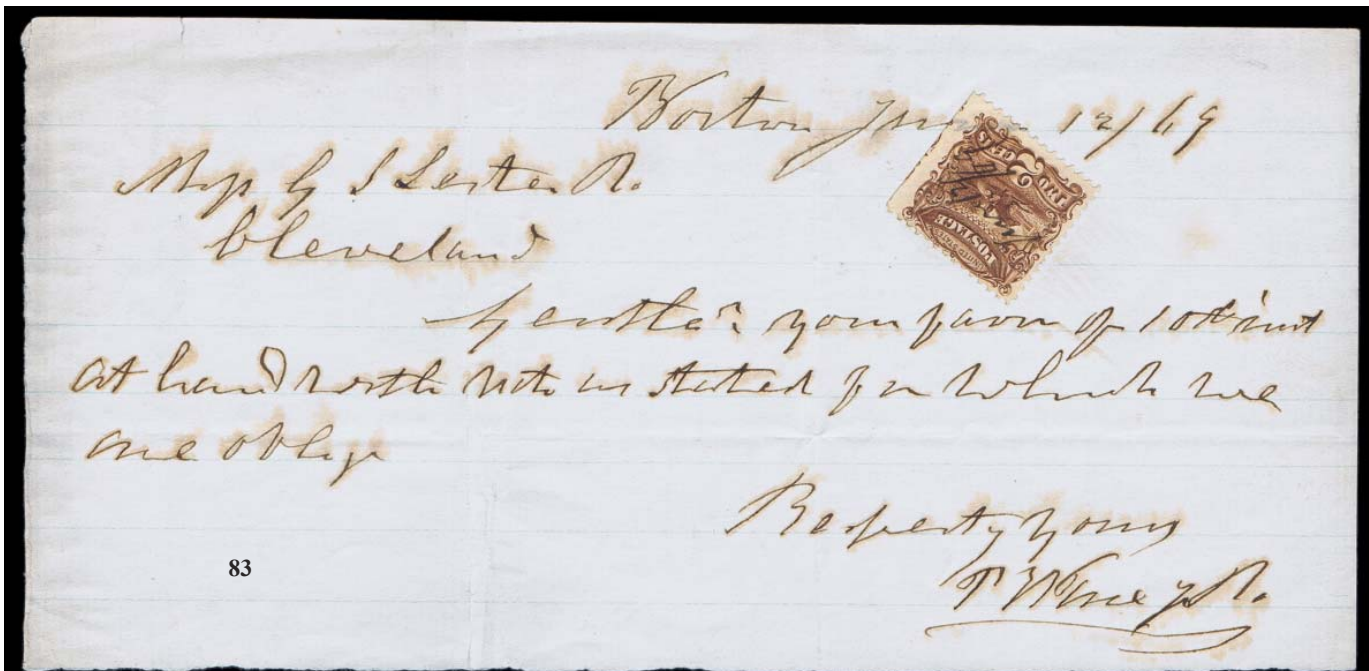
79 ---->



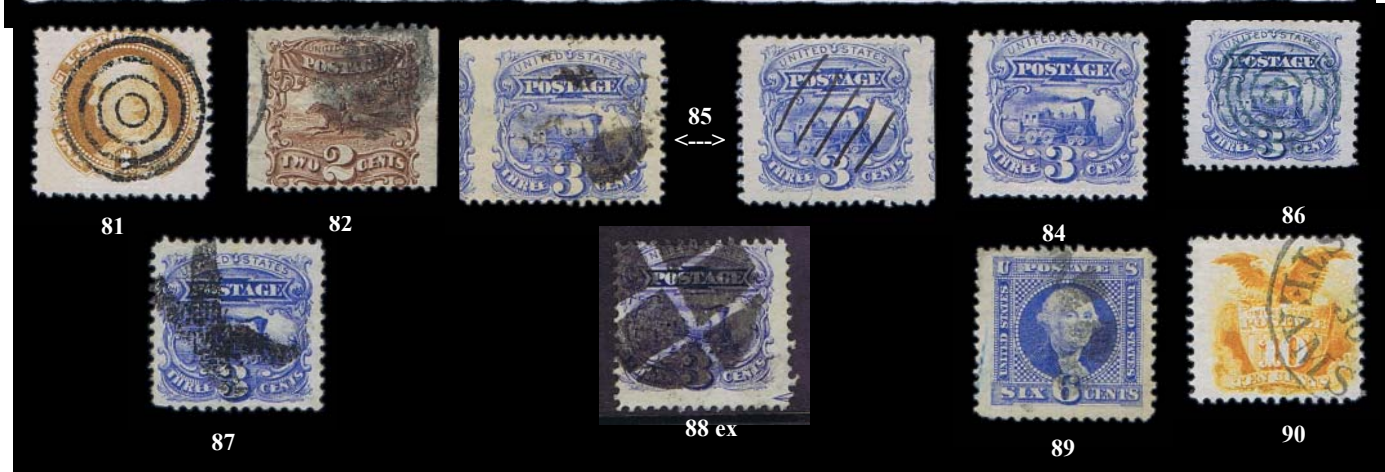
<-- 80

# 1869 Issue

- 81 O **1¢ buff**, truly an NRA clear black target cancel on a fine copy, exceptional (112).....Est. Cash Val. \$75 - 100
- 82 ☆ **2¢ brown**, distinctive used wide copy with INTERPANNEAU margin one side and wide SE on the other, creases, fine (113)..... Est. Cash Val. \$75 - 100
- 83 ▲ **Used as Revenue; 2¢ brown**, cancelled in pen "June/2/69" on small single page document (113).  
..... Est. Cash Val. \$50 - 75
- 84 ☆ **3¢ ultramarine, Split Grill**, o.g., paper hinge remnants, centering typical of the paper shift variety, fine. Foundation Cert. (1987)..... (114 var.) \$275
- 85 ☆ **3¢ ultramarine, matched pair of Interpanneau stamps** left and right showing portions of adjacent stamps, postmark and manuscript cancels, hard to find them (114)..... Est. Cash Val. \$100 - 125
- 86 O **3¢ ultramarine, JUMBO** copy with blue-green NRA type socked-on-the-nose target cancel, a most eye-catching stamp, extremely fine (114)..... Est. Cash Val. \$100 - 125
- 87 O **3¢ ultramarine**, distinctive black K cancel of Denmark Tenn, couple insignificant short perforations, very fine. Skinner-Eno LS-K5. (114)..... Est. Cash Val. \$75 - 100
- 88 O **3¢ ultramarine, Plate Study**, comprising 8 arrows on 6 singles and 2 pairs, all corners of the compass, plus 3 stamps with inscriptions or Pl. No. within the stamp, plus a strip of 4 we can't find anything, all stamps used, wonderful for an exhibition page (114)..... Est. Cash Val \$200 - 250
- 89 O **6¢ ultramarine, JUMBO** copy with indistinct black cancel, very fine ..... (115). \$200
- 90 O **10¢ yellow**, very attractive STEAMSHIP c.d.s. on a brilliant fresh stamp, very fine cancel application..... (116). \$145



83



81

82

85

84

86

87

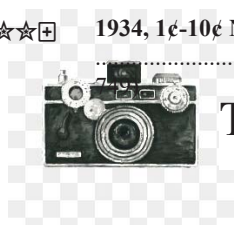
88 ex

89

90



91	O	<b>12¢ green, interpanneau copy</b> , striking used single with margin with arrow at left and unusually large margins top and right, unobtrusive corner cancel, very fine (117)..... Est. Cash Val.	\$100 - 125
92	O	<b>12¢ green</b> , very lightly cancelled VF-XF 85. Foundation Cert. (2017)..... (117)	\$190
93	O	<b>12¢ green</b> , lightly cancelled VF-XF 85. Foundation Cert. (2011)..... (117).	\$190
94	O	<b>12¢ green</b> , neat cork cancel, very large and well centered., neat cork cancelvery lightly cancelled, extremely fine..... (117).	\$120
95	O	<b>12¢ green</b> , tidy red c.d.s. cancel in corner, bright color, almost very fine (117)..... Est. Cash Val.	\$100 - 125
96	☆	<b>15¢ brown &amp; blue, type II, disturbed o.g., perforations barely touch frame-line at right, fine ...</b> (119)	<b>\$3,000</b>
97	☆	<b>15¢ brown &amp; blue, type II</b> , unused, fresh colors, large copy, truly insignificant pin hole, fine..... (119)	\$1,050
98	☆	<b>24¢ green &amp; violet, unused, good colors, perforations barely touch right outer frame-line, fine</b> (120)	<b>\$2,600</b>
99	O	<b>24¢ green &amp; violet</b> , “showing NO DISCERNABLE GRILL” indistinct cancellation, tiny corner perforation crease., fine. Foundation Cert. (2017)(120var)..... Est. Cash Val.	\$300 - 600
		<i>Rare.</i>	
100	O	<b>24¢ green &amp; violet</b> , lightly cancelled, fresh, fine. APS Cert (1994)..... (120)	\$600
101	O	<b>24¢ green &amp; violet</b> , vignette free cancel, fresh colors, fine..... (120)	\$600
102	O	<b>24¢ green &amp; violet</b> , lightly cancelled, fine..... (120)	\$600
103	O	<b>24¢ green &amp; violet</b> , lightly cancelled, inclusion, fine ..... (120)	\$600
104	O	<b>30¢ ultramarine &amp; carmine, lightly cancelled, wonderful centering. XF 90. Foundation Cert.(2017).</b> .....(121)	<b>\$1,150</b>
105	O	<b>30¢ ultramarine &amp; carmine</b> , cancelled by dated STEAMSHIP cancels, beautifully centered and fresh color, very fine.....(121)	\$485
106	O	<b>30¢ ultramarine &amp; carmine</b> , sun-burst cancel plus blue French transit (normally \$250 premium), fine ... ..(121)	\$400
107	O	<b>30¢ ultramarine &amp; carmine</b> , lightly cancelled, large well centered copy with bright colors, corner crease, extremely fine appearance ..... (221)	\$400
108	O	<b>90¢ carmine &amp; black, cork cancel, wonderful centering, fresh colors, extremely fine</b> ..... (122)	<b>\$1,700</b>
109	O	<b>90¢ carmine &amp; black (short one corner perforation), incredibly lightly cancelled for a 90¢ a fine and unusual copy</b> ..... (122)	<b>\$1,700</b>
110	O	<b>(1875 Re-issue), 1¢ buff</b> , neat part target and c.d.s. cancels couple of short perforations, greatly undercatalogued used, fine ..... (123)	\$425
111	☒	<b>1887, Embossed Advertising Cover</b> , with embossed and iridescent green corner cards of “Hartman Steel Co., Nail for Nail, Beaver Falls, PA” on U277 entire with “Beaver Falls, PA Aug 4 1887” C.D.S. fancy, very fine. Ex. H.C. Gibson handstamp..... Est. Cash Val.	\$100 - 150
112	☆☆☒	<b>1893, Columbian, 6¢ purple, Block of Four</b> , never hinged, bright fresh color and gum, very fine.. (235)	\$540
113	☆	<b>1893, Columbian, group of 3</b> , comprising 8¢ magental.h. graded XF 90, 8¢ l.h. tiny scuff, 15¢, l. all with Foundation Cert.’s, old and new, all well centered.....(236(2),238).	\$307
114	O	<b>1893, Columbian, \$2 brown red</b> , neat REG oval, bright color, very fine. Foundation Cert. (1987). (242).	\$525
115	☆	<b>1898, Trans-Miss., 10¢ gray violet</b> , lightly hinged. Foundation cert. (2001) also 2017 XF-S 95.....(290)	\$450
116	☆☆☒	<b>1934, 1¢-10¢ National Parks complete, perforated, Full Sheets of 50</b> , never hinged, fine to very fine... .. (740-	\$750 as singles



**This lot can be viewed on-line.**







117

- 117 ☆ ☆ 1934, Parks 2¢ red Imperforate Vertically, Horizontal Pair, never hinged unduly harsh “right stamp a small internal crease” (PF) which is in our opinion a wrinkle typical of this issue, very fine. Foundation Cert.(2003), APS Cert. (1973) no mention of any faults. .... (741b) \$1,600

**Only 2-3 panes issued.**

- 118 ☆ ☆ ⊕ 1938, \$5 Presidential carmine and black, Top Arrow Plate Block of 4, never hinged, centered, very fine .....(834). \$375

- 119 ☆ Airmail, 1930, Graf Zeppelin complete, o.g., fine to very fine.....(C13-C15) \$1,105

- 120 ☆ Treasury Dept: 1873, 1¢-90¢ brown complete set, most o.g. or part o.g. with hinge remnants, 30¢ no gum, mostly fine.....(O72-O82) \$2,955



120 ex.



118



119

**WISHING TO CONSIGN?**  
 The best number in Philately .....800-223-6076

# Unique 1847 5 cent Red Brown Dot in "S" Variety with Swarts 1c Red



121

121



Swart's City Dispatch Post, 1849-53, 1¢ red Top Sheet Margin, margins all around together with 1847 5¢ red brown Dot in "S" variety (vertical crease) margins 3 sides, the former cancelled by appropriate PAID (we believe tied) the latter tied by red grid to folded letter dated lined March 29 1849 and bearing NEW YORK, MAR 23 c.d.s. and red PAID Foundation Cert. (2017). Ex Emerson (Feb, 1993 No, 469) where it was purchased by Edward Knapp (May 6, 1941 #1358) also probably P. Ward.(1,136L15) ..... Est. Cash Val.

\$2,000 -  
3,000

Earliest known use of the 1c and one of the only two covers bearing the 1847 Issue, the other being a 10 cent. This cover have been the subject of a recent article in the July 2017 editions of the Penny Post accompanies. The 1c stamp has been removed and replaced for this study.

Unique on two counts.





122



123



124



125

- 122 ☆ **Revenues: Documentary, 1871, Second Issue, \$20 blue & black, neat manuscript cancel without cuts, typical centering, fresh bright colors.....** (R129) \$1,000
- 123 ☆ **1871, Second Issue, \$25 blue & black, light manuscript cancel, no cuts nice centering, double perforations at bottom, faint creasing, fine,.....**(R130) \$950
- 124 ☆ **1871, Second Issue, \$50 blue & black, deep colors, perforations barely touch at bottom, fine.....**(R131) \$1,200
- 125 ☒ **Confederacy, 1863, 10¢ green, type I, margins all around tied by RICHMOND AP 27 c.d.s. on crude papered envelope (bearing lot no.'s from previous auctions) to Charlotte. C.S.A. Cert. (1996).....**(13) \$1,250

# COLLECTIONS & VARIOUS

126	★○☒	1869 Issue, Eclectic group of 26 stamps and one 2¢ cover, comprising 1¢ 1 unused 4 used, 2¢ unused and used, 3¢ unused, 1 used, proof, 10¢, 2 unused, 12¢ unused, 6 used nice cancels, perfed TC, 15c, 3 used, 24c 2 used some very nicely centered and large stamps, some good regumming, very useful for retail and e-bay.....	\$6,500
127	★	1919-38, fairly complete collection of 127 Plate Blocks of 6 or 4, in Gimbel album vast majority never hinged, all hinged ones noted, includes Lex-Concord complete, Norse 1¢, Hawaii complete o.g., Parks perf and imperf, Prexy to \$2 and some airs, nice, clean selection, fine to very fine.	\$2.200
128	★	1890's to 1960's, collection of many hundred, on Minkus album pages (2-ring binders) plus coil pairs and plate blocks (2-ring binders), comprising Prexy's to \$1 most famous Americans, Wash.-Franklin booklet panes, probably most never hinged and very fresh, useful lower end material, Liberty to \$5.00, never hinged.....	Est. Cash Val. \$500 - 600
129	★	20th Century: The property as received housed in 3 stock books, a ring binder of hand-colored covers some later WWII a National Album with 20th Century and some Revenues, a Plate Block album, 1950's glassines, a lot of face or better to be figured, PPC and some early covers plus U.N. album. Worth the time.....	Est. Cash Val. \$200 - 300
130	○	1861-66, a fine group of 11 used stamps, on Scott pages, includes 63,65,68-73,76,78, mixed condition, some fine appearing .....	(63,65,68-73,788). \$2.090
131	☒	Advertising Covers; 1855 to 1904, group of 6 franked envelopes in original Herb Latuchie lot sheets (cost \$370) with full descriptions, 4 envelopes, ready to offer up.....	Est. Cash Val. \$150 - 200
132	☒	Pittsburgh Pa, Postal History, a selection of 15 covers and cards, 8 from 19th century, 7 from 1900 to 1940's, includes advertising, corner cards, fancy encels, etc., most described with dealer pricing \$650, all the work done.....	Est. Cash Val. \$100 - 150
133	☒	Accumulation of a few hundred covers, loose and in 2 binders, some stampless including BRAZO s.l. from Mexico War, 6 official Treasury 3¢,6¢ frankings unused, Postal Cards, identified, few stampless and older FDC, nothing great but some useful.....	Est. Cash Val. \$100 - 125
134	★ ★	U.S. Possessions, Territories, Occupations, etc: Hawaii, Canal Zone, Phillipines, Trieste (Specialized Album), Ryukyu (Specialized Album), plus FDC and many sheets, great variety, never hinged .....	Est. Cash Val. \$500 - 750



With a little work you can turn turn these collections into Gold.

*End of United States*



# BRITISH COMMONWEALTH

## Antigua

- 135 ☒ **Antigua, 1792, Codrington Correspondence, folded letter bearing 2-line COWES SHIPLRE hand-stamp, two letters combined May 15/June 11 to Christopher Bethell (London) confirming death of Sir William Codrington and heir nephew Christopher, reference to Abolition slave bill in House of Commons..... Est. Cash Val. \$300 - 500**  
*The Codrington family leased Barbuda in 1669. They relinquished the lease in 1870. Christopher Bethell changed his name from Codrington on marriage.*
- 136 ☆ ☆ **1862, Queen Victoria, 6d blue green, rough perf 14 to 16, far better centering than normally seen in this issue, as well entered as the best example in the Mayer Collection, o.g., very fine. Royal Cert. (2017) SG 1.....(1) £700.**
- 137 ☆ **1903-09, Seal of the Colony & King Edward VII, ½d-5s complete, l.h. to o.g, set of 10, fine to very fine. SG 31-40; £325.....(21-30) \$388**
- 138 O **1903-09, Seal of the Colony & King Edward VII, ½d-5s complete, lightly cancelled set of 10, fine to very fine. SG 31-40; £500.....(21-30) \$580**

## Australian States

- 139 O **New South Wales, 1850, Sydney View, 1d reddish rose, plate I, yellowish paper, indistinct grid cancel, good margins all around, very fine. SG 3; £475. ....(1) \$725**
- 140 O **1850, Sydney View, 1d deep carmine, plate I re-engraved, yellowish paper, grid cancel, good to large margins all around, rich color very fine, SG 8; £375.....(2) \$600**
- 141 ☆ **1850, Sydney View, 1d dull carmine, plate I re-engraved, yellowish paper, hill unshaded, lightly cancelled, very fine. SG 8b; £750.....(2f). \$925**
- 142 O **1850, Sydney View, 1d crimson lake, plate I re-engraved, bluish paper, grid cancel, deep color, large margins all around, extremely fine. SG 9..... (2n) \$750**
- 143 O **1850, Sydney View, 2d gray blue, plate II, early impression, neat grid cancel showing most of vignette, large to enormous m.a.r. with sheet margin frame at right and bottom, proof like impression, superb. Scott 5h. ....(SG 23) £650**
- 144 ☆ ☆ **1904, Queen Victoria, 10s violet & claret, perf 11, never hinged, fresh, well centered, extremely fine. SG 277a; £500 ..... (108Bc). \$525**
- 145 O **South Australia, 1855, Queen Victoria (London Print), 6d deep blue PAIR, circle in grid cancels, good to large margins all around, very fine. SG 3; £340 as singles..... (3). \$400 as singles**
- 146 O **Tasmania, 1853, “Van Diemen’s Land”, 4d orange, plate I, 2nd state, crisp “68” in grid cancel, good to very large margins all around, insignificant natural paper translucency not showing on paper surface, very fine. Scott 2a. .... (SG 8) £1,300**
- 147 ☆☆/ ☆ ☒ **1873, Queen Victoria “Chalon Head”, 1s brown red, perf 11½ Block of Four, 2 n.h., 2 l.h., typical crackly gum, very fine. SG 140; £1,300 as singles. ....(34d) \$1,300**  
*An incredibly rare multiple*
- 148 O **1873 Queen Victoria “Chalon Head”, 1s brown red, perf 11½ PAIR, neat LAUNCESTON JN 10/75 duplex cancels, perfectly centered, very fine. SG 140; £130. ....(34d) \$130**
- 149 ☆ **1875, Queen Victoria, 5s purple, perf 11½, lightly hinged, perforations clear all around, very fine. SG 149; £350..... (59d). \$350**
- 150 O **Western Australia, 1854, Swan (litho), 4d blue, imperf, “6” in grid cancel (Albany), large margins all around showing part of adjacent stamp at bottom, sharper impression than normal, extremely fine. SG 3a; £200. .... (3) \$275**
- 151 ☆ **1883, Swan (engraved), 1d yellow ocher, perf 12 x 14, lovely crisp “14” in grid cancel, perfect centering and brilliant color, extremely fine. Brandon Cert. (1998). SG 81; £300. .... (54) \$300**



136



137 Ex.



138 Ex

135



139



140



141



142



143



144



145



146



147



148



149



150



151-->



More Photos available



# AUSTRALIA

## 1913 to 1934 Kangaroo and Map



152



153

152 ☆ 1913, 0s gray & pink, o.g. barest trace of hinge, very fresh, fine. SG 14; £900. .... (13) \$1,600

153 ☆ 1913, £1 brown & ultramarine, lightly hinged uncommonly bright colours, very fine. Brandon Cert. (2017). SG 15; £3,000..... (14) \$4,000



154



155



156

154 ☆ 1913, £1 brown & ultramarine, original gum, hinge remnant, very fine. SG 15; £3,000..... (14) \$4,000.

155 ☆ 1913, £2 black & rose, original gum, almost very fine. SG 16; £6,500..... (15) \$8,500

156 ☆ 1915, 5s gray & yellow, o.g., hinge remnant, very fine. SG 30w; £1,300. (44a)..... (44a) \$1,250



157

157 ☆ 1917, 2½d deep indigo, “1” of fraction omitted, light duplex cancel, centered, very fine. R.P.S. Victoria Cert. (2015). SG 36ba; £35,000. .... (46a) \$50,000

*One of the rarest stamps in Australia philately, there are reportedly only 15 used and unused copies known. The recently auction Cartwell collection only had this error on a Perfed O.S*



158

159

- 158 ☆ 1918, 5s gray & yellow, lightly hinged, good color, almost very fine. SG 42; £275..... (54) \$325
- 159 ☆ 1917, 10s gray & pink, lightly hinged, bright fresh colors, perfs well clear all around, fine. SG 43; £550.  
..... (55) \$1,050



160

161

- 160 ☆ 1916, £1 chocolate & dull blue, superb colors and centering insignificant corner perforation crease, very fine. SG 44; £3,000..... (56) \$3,450
- 161 ☆ 1924, £2 purple black & pale rose, lightly hinged, almost very fine. Foundation Cert.(1971), #32718 not present. SG 45b; £4,500. .... (59) \$5,250
- 162 1927, 1½d Canberra, VERTICAL PAIR, IMPERFORATE BETWEEN, lightly hinged, horizontal crease as usual causing the error, fine. SG 105a; £5,500..... (94a) \$5,000



162

*Very rare only 15 pairs have been identified.*

**Looking to put  
some cash in your pocket?  
Consign with us.  
1.212.532.3700**





163	★	<b>Kangaroo and Map, 1929, 5s gray &amp; yellow</b> , lightly hinged, well centered, strong colors, extremely fine. SG 111; £250..... (100)	\$475
164	★	<b>10s gray &amp; pink</b> , lightly hinged, very fine. SG 112. .... (101)	\$1,000
165	O	<b>£2 black &amp; rose</b> , neat LATE ___ SPENCER ST. VIC Roo-free c.d.s., well centered, very fine. SG 114; £750. (102)..... (102)	\$925
166	O	<b>1930, £2 black &amp; rose</b> , light c.d.s. cancel, very fine. SG 114; £750. .... (102)	\$925
167	O	<b>1931-1936, 6d to £1, selection of 23 used</b> , includes pair and 2 blocks of 4, 6d(2), 9d(2), 2s(4), 5s(3), 10s(2), £1 plus 1905 2s(9), fine to very fine. SG £762 ..... (121-128, 206).	\$1069
168	O	<b>1935, £1 gray</b> , neat "AIRMAIL SP-10C37" c.d.s., centered, very fine. SG 137; £275. .... (128).	\$375
169	O	<b>1934, £2 black &amp; rose</b> , light c.d.s. cancel, fine. SG 138; £600. ....(129)	\$800
170	O	<b>1934, £2 black &amp; rose</b> , partial c.d.s., extremely fine. SG 138; £650. ....(129)	\$800
171	★ ★	<b>1932, Sydney Bridge, 5s gray green</b> , never hinged, very fine. SG 143..... (132)	\$1600
172	★	<b>1932, 5s gray green</b> , o.g., hinge remnant, almost very fine. SG 143..... (132)	\$350





173 --->



<--174

173 ☆ **Bahamas, 1861, Queen Victoria, 4d dull rose, rough perf 14 to 16, part o.g. fresh bright colour, almost very fine for these early issues. Signed H. Block. SG 5; £1,400. .... (3) \$1,800**

## BARBADOS

174 O **1855, "Britannia" (1/2d) yellow green PAIR, light "1" in grid cancels, good to large margins all around, very fine, A rare pair. Ex. Consul Weinberger. SG 7; £220..... ((5a). \$250**



<--175

175 ☒ **1855, "Britannia" (1d) pale blue, imperf, uncanceled, L-shaped strip of 4, the bottom right example bisected diagonally, margins almost around, used on part of Mercantile Intelligence bearing partial address Stewart's Hill, St. John's, the stamps are sound except for one lightly creased, the piece bears faults and repairs. Brandon Cert. (2008). SG 9 var. (6a var.)..... ((5a).... Est. Cash Val. \$1,000 -1,500**

*This piece is unique outside the example in the Royal Collection (single, bisected), with documentation from Buckingham Palace, which is on an equal sized piece of newspaper bearing the same address and very similar, if not the same, handwriting. The only other bisect from this early period is an example of the grayish slate on cover from the Charlton-Henry, Amundsen and Cartier collections.*



- 176 O 1860, "Britannia" (1d) blue, pin-perf 12½, light "I" in grid cancel, natural straight edge at top, perforations almost complete other 3 sides and clear of design, fine. SG 16a; £1,600. .... (12A) \$1,750
- 177 ☒ Used to the United States: 1861-65, "Britannia" (1d) blue and (4d) dull brown red, rough perf 14 to 16, both tied by "1" boot heel cancels on mourning envelope bearing NY STEAMSHIP 10 hand-stamp, STAMFORD CT AUG 24 initial receiver, straight line FORWARDED (to New Canaan), on reverse BARBADOS Au 10 187\_origin c.d.s. Ex. Hodsell Hurlock (twice). SG 24, 26. (16, 17a).... Est. Cash Val. \$300 - 500
- A rare destination plus any ship markings are extremely scarce. With documentation.*
- 178 ☆☆ S 1896, Seal of the Colony, ¼d slate gray & carmine, overprinted SPECIMEN, Vertical Sheet Margin Strip of 5, nh,very fine, rare multiple and the largest that can exist. SG 105S. (70S).... Est. Cash Val. \$100 - 150
- 179 ☒ 1894, soldier's letter from Sgt. Taylor to family in England, bearing 1892, Seal of the Colony, 1d carmine tied by BARBADOS SP 8 94 c.d.s., countersigned by Major SC Oughleterson D.A.A.G., a rare military cover from the islands. SG 107. (72)..... Est. Cash Val. \$250 - 300
- 180 ☆ ☆ 1907, Nelson Centenary, 2½d black & indigo, never hinged, Bottom Sheet Margin Copy, superb. B.P.A. Cert. (1949) photo copy of block of 4 this being the bottom right stamp. SG 162a; £700 as hinged ..... (112a) \$825 as hinged
- 181 ☆ 1907, Nelson Centenary, 2½d black & indigo, lightly hinged, a very rare and popular color error, extremely fine. B.P.A. Cert. (1949) photo copy of block of 4, this being the top right stamp. SG 162a; £700. .... (112a) \$825
- 182 P 1912-16, ¼d, die proof of the single duty plate value tablet, with shield surrounded in black on white glazed card. SG 170 P. (116P)..... Est. Cash Val. \$150 - 200
- 183 ▲☒ 1907, Kingston Relief Fund, 1d on 2d slate black and orange, surcharge inverted error, Block of 15 tied to piece by 8 JUNE 70 c.d.s. includes 3 examples of the no stop after "d" variety, very fine, Exhibition piece. SG 153a(12)153e(3); £378. ....B1b(12)c(3)) \$405



183



176



177 -->



179 -->



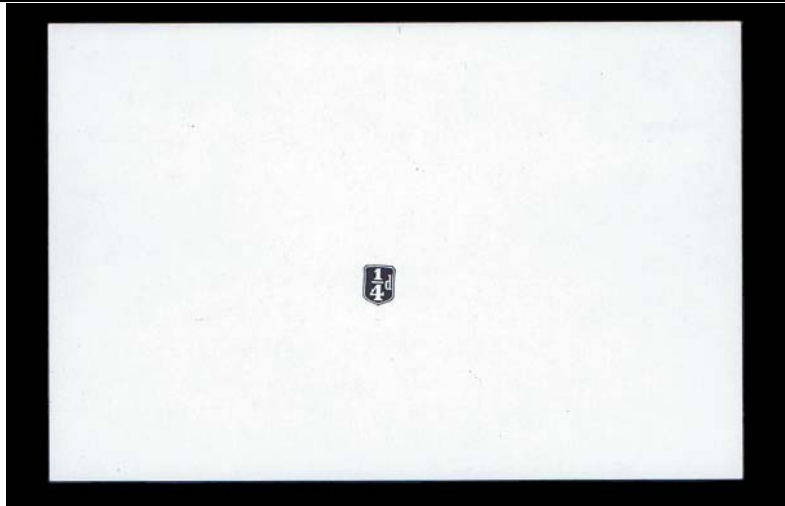
179 -->



180



181



182 -->





- 184 ☆ **Basutoland, 1933, King George V, ½d-10s complete**, lightly hinged, fine to very fine. SG 1 - 10; £364 as singles. .... (1 - 10). \$353
- 185 S **1932, King George V, ½d-10s complete, perforated SPECIMEN**, o.g., hinge remnants, fine to very fine. SG 99-110S..... (105-116S) £450
- 186 ☆ **1932, King George V, ½d-10s complete**, lightly hinged, fine to very fine. SG 1 - 12; £588 as singles..... (1 - 12). \$556
- 187 ☆ ☆ **1961 Surcharge Issue: 2½ on 3p bright ultramarine, Strip of Four**, wide spaced "C" position 3, left copy in bottom corner, n.h., extremely fine. Scott 64 var. ....(SG 160A). £250 for hinged



- 188 ☆ **Bermuda, 1930, King George V, 2s6d gray black & pale orange vermilion on gray blue**, full o.g. excellent centering, bright true color, two short perforations at bottom, very fine. SG 89d; £3,250 ..... (95a) \$3,500  
*Only one pane of 60 is known to be printed. This is the rarest of all of the Key Plate shades and the last printing of the 2s6d.*

- 189 ☆ O **British East Africa, 1890-95, Arms of the Company, useful group of 2 o.g. and 3 used**, 1r, 4a, 8a, fine to very fine. SG 15,38og,35,40,42used; £625..... (between 26 and 47). \$715



Complete Sets can be viewed on-line.

# BRITISH GUIANA



- 190 O 1857-59, Seal of the Colony, 1¢ dull red, with line above value, type C, light neat DEMERARA —60 c.d.s., good to close margins all around, obvious wide spacing between N-T, fine, rare. SG 16; £2,500..... (9b) \$2,750
- 191 O 1853-55, Seal of the Colony, 4¢ pale blue, with line above value, light SEP 1857 c.d.s., good to large margins all around, very fine. SG 20; £700. ....(10b) \$750
- 192 O 1862, Local Typeset Issue, 4¢ black on blue, c.d.s. cancel, fault free copy, good to large margins close at lower left, roulettes trimmed as typical for this issue, fine. SG 124; £1,400.....(41) \$1,400
- 193 ☆ 1882, Local Typeset Issue, 1¢ black on magenta, perforated SPECIMEN right side up and upside down, 8 stamps, 3 with thin spots, un gummed as issued, fine to very fine. SG 162-65.....(103-06 var.) SG £710



- 194 ☆☆☆ British Honduras, 1891, Queen Victoria, 5¢ on 3¢ on 3d red brown, “FIVE” and bar doubled, never hinged, fresh and, very fine. SG 49b; £375..... (35a). \$450

## Wondering what your collection is worth?



We can help ..

No cost No obligation consultations.



# BRUNEI

195	☆☆	1942-44, 1¢ to \$25 (less 2¢), vast majority never hinged including 7 corner or margin copies, key values l.h. to o.g., exceptional set missing only the 2¢ (\$75.00 catalog stamp), generally very fine. All or most signed M. Rowell, 4 high values with Sismondo Certs. SG J1,J3-19; £3,842..... (N1-19)	\$5,600 less N2
196	O	Japanese Occupation, 1942-44, 30c purple and orange yellow, incredible Vertical Strip of 5, cancelled by three Japanese c.d.s. strikes, top stamp horizontal crease, overall a very fine and an incredibly rare multiple. B.P.A.Cert. (2007) erroneously states soiled which is in fact off-set on reverse from the cover or package. Scott \$1,125. SG J15..... (N15)	SG £900



196



195 ex



197 ex

198

199

200

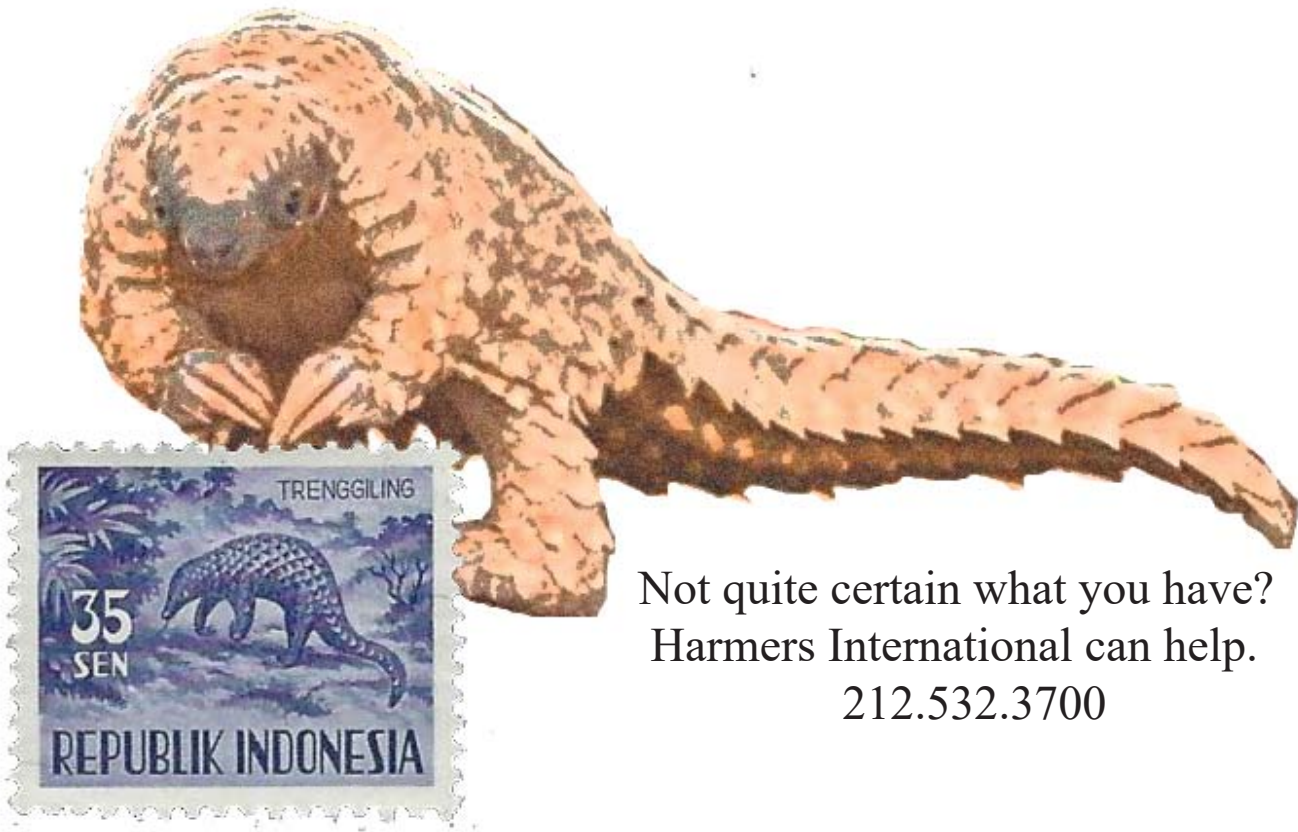
201 ex

202 ex

203 ex

## BURMA

197	☆☆☆	1937, King George V, 3p to 5r, set of 16, never hinged or lightly hinged 1r, 2r n., very fine. SG 1-15; £173 as hinged. .... (1-15).	\$170
198	☆	1937, King George V, 10r carmine and green, lightly hinged, perfectly centered, extremely fine. Scott 16. ....(SG 16).	£275
199	☆	1937, King George V, 15r blue and olive, lightly hinged, perfectly centered, extremely fine. Scott 17..... (SG 17).	£800
200	☆	1937, King George V, 25r blue and ocher, lightly hinged, extremely fine. Scott 18.....(SG 18)	£1,600
201	☆	1938-40, King George VI, 1d to 10r plus 1940 Commems, lightly hinged, generally very fine. Scott 18A//34. ....(SG 18b//33).	£266 as singles
202	☆	1937, 3p to 10r complete, mostly lightly hinged, generally very fine. Scott 01-14.....(SG 01-14)	£1,035 as singles
203	☆	1939, 3p to 10r, o.g. some hinge remnants, very fine. SG 015-27; £290.....(015-27)	\$250



Not quite certain what you have?  
Harmers International can help.

212.532.3700



# CANADA & PROVINCES

204 O **British Columbia & Vancouver Island, 1867, 50¢ on 3d violet, perf 12½, probably non-contemporary cancel, fine. SG 32; £1,100..... (298) (17).** \$1,000

## New Brunswick



205

205 ☆ **1851, 3d red unused, large to good margins all around, very fresh, very fine. SG 1; £3,500..... (1) \$5,500**

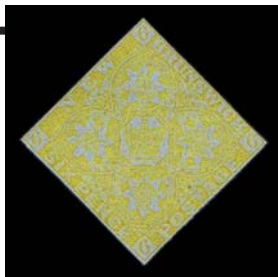
*A lovely stamp.*

206 ☐ **1851, 3d red, good margins all around, very fine, tied by probably "1" in grid on folded letter, some creases well clear of stamp, on reverse ST JOHN DE 23 1858 c.d.s. and SHEDIAC receiver. SG 2; £700..... (1) \$950**

**Also see lot 218**

207 ☆ **1851, 6d olive yellow, unused, clear to ample margins all around, brilliant strong color as many of these come washed out, hard to find in sound condition, a fine copy. Greene Cert. (2017). SG 4; £5,000..... (2) \$7,000**

208 ☆ **1851, 6d olive yellow, unused deep color margins all clear all around, "dark smudge" which is really light and 2 small thin spots not mentioned in Cert., fine. Greene Cert (2013). SG 2; £5,000... (2) \$7,000**



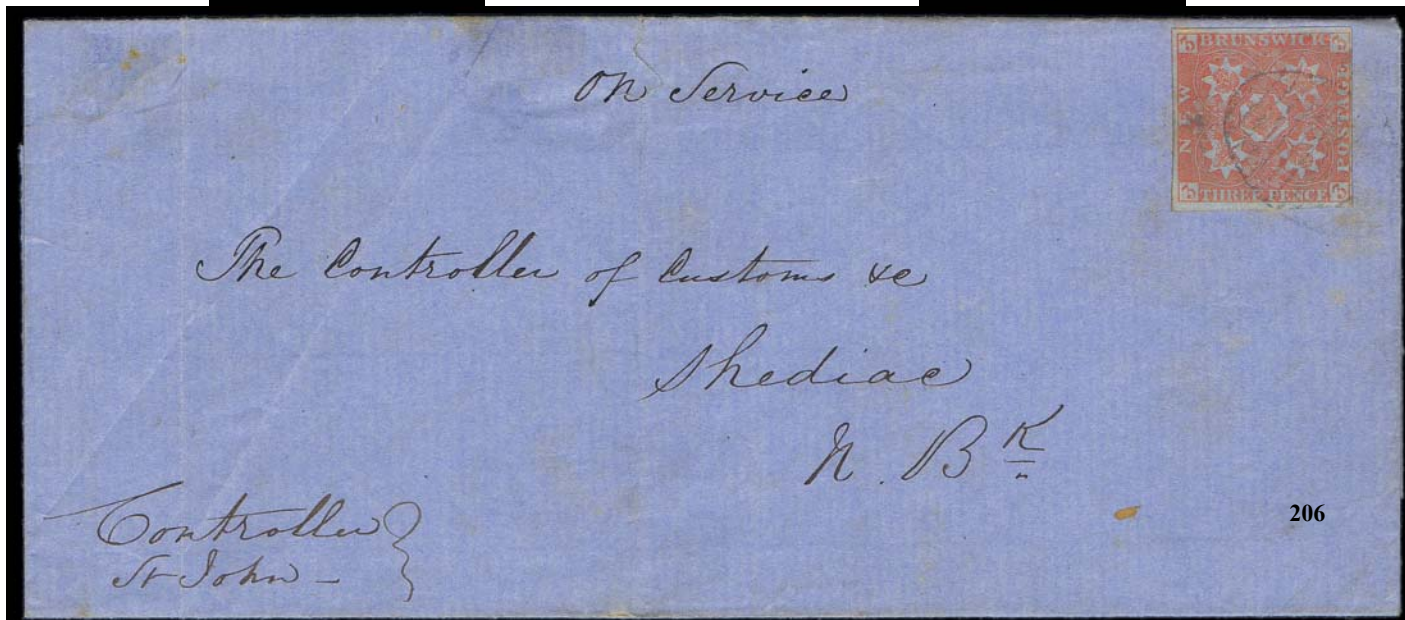
207



204



208

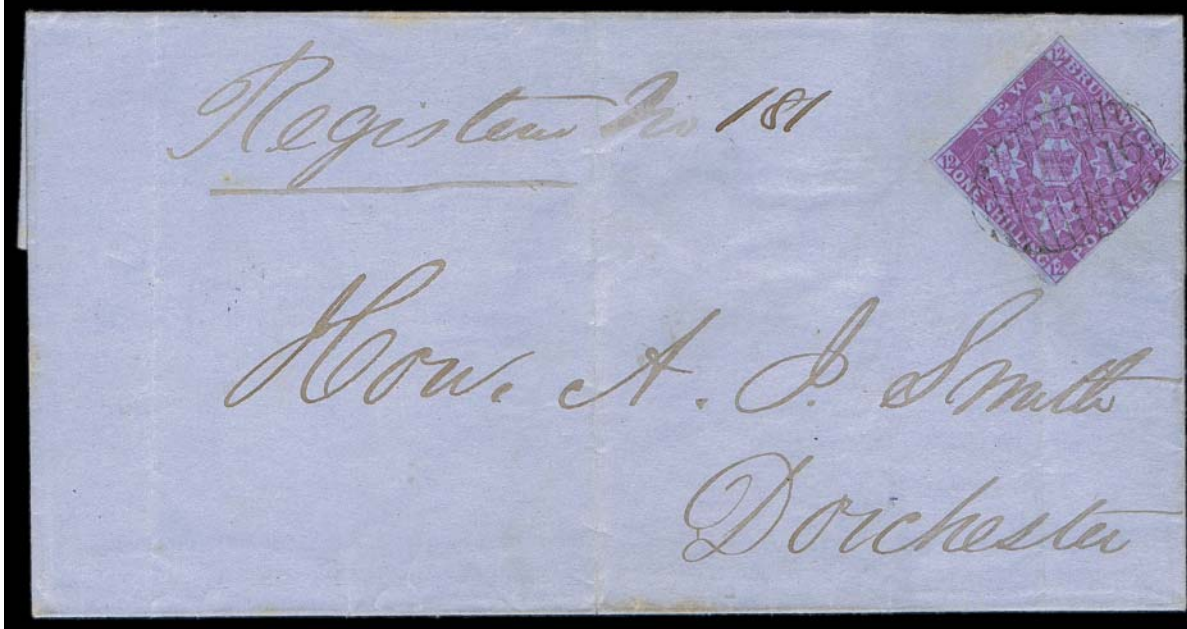


206



209  Used from the United States: 1851, 6d olive yellow, two stamps margins all around right copy margins 2 sides, tied by small bar grid cancels on folded letter (bottom flap missing) bearing incredibly rare U.S. EXPRESS MAIL BOSTON JUN 29 c.d.s., on reverse ST. JOHN NEW BRUNSWICK JUN 30 1857 c.d.s. receiver, a historical piece of British North American postal history. Ex. Dale \$1,500 -  
Lichtenstein (Jan. 1970 #130) Saint. B.P.A. Cert. (1998). SG 4. (2)..... Est. Cash Val 2,000

*This unique-double rate cover, mailed from the U.S. was sent via Favors Express on their ship the Adelaide, which proceeded to St. John. On board, the Express marking was applied, but not on the stamps, as was normal for New Brunswick to U.S. covers, it is surmised, the stamps were additionally applied on-board to pay the rate.*



210  1851, 1s bright red violet, margins all around, fresh, "filing crease" and tiny almost invisible "black mark", fine, tied by "16" in oval grid (RF9 very rare) on 1855 folded letter sheet (one back flap tear), bearing ms. "Registered No 181," on reverse HARVEY 15 DEC c.d.s. origin, Salisbury Bend-of Petticodiac and Dorchester (receiver) strikes, very rare. Greene Cert. (1998), Ex Carr and older HRH auction (lot #696). Scott 3. .... (SG 5). £13,500

*There are only 22 1 shilling covers in existence, 9 being almost unobtainable bisects and quadrisects, and one strip of 3, hence only 12 bearing single frankings. This cover is one of the two known of the Registered internal rate. Obviously very scarce in any condition.*





211



212

- 211 O **Newfoundland, 1860, 5¢ brown**, light grid cancel, good margins all around, very fine. Richter hand-stamp. SG 5; £500.....(5) \$425
- 212 ☆ **Newfoundland, 1857, 6½d scarlet vermilion**, unused, good margins all around, vibrant color, 2 thin spots, very fine appearance. A.P.S. Cert. (1998). SG 7; £4,500..... (7) \$5,000

### Nova Scotia

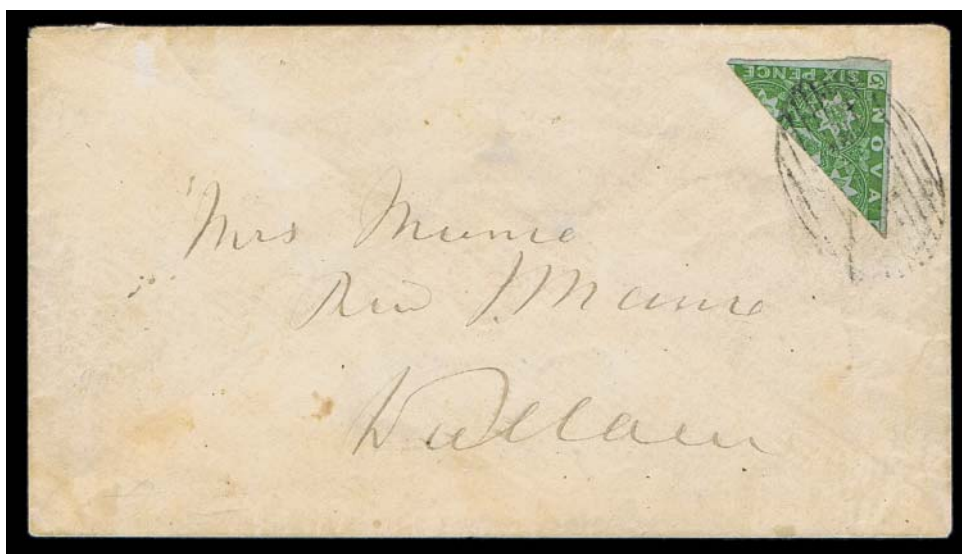


213



214

- 213 ☆ **1853, 1d red brown**, traces of o.g., margins 2 sides, horizontal crease broken at left, presentable copy. Greene Cert. (2011). SG 1..... (1) £3,000
- 214 O **1853, 1d red brown**, good to clear margins all around, very deeply blued paper, light cancel, very fine. SG 1; £475..... (1) \$525



215

- 215 ☒ **1851, 6d yellow green**, Bisected, good margins both sides very fine, tied by oval grid on envelope bearing on reverse PICTOU JU 21 1860 origin c.d.s. and WILLAM receiver. Attractive. Greene Cert. (2006). SG 5a; £3,250..... (4a) \$4,500



216

216  1851, 6d yellow green, Bisected, large margin to just touched, tied by partial large indistinct cancel on envelope bearing on reverse HALIFAX JU 21 1855 origin c.d.s. and ANTIGONISH JU 22 1855 receiver. Not listed in Firby Census. Brandon Cert. (2001). SG 5a; £3,250. .... (4a) \$4,500



217

217  1857, 6d dark green, Bisected, good margins, tied by grid cancels on envelope, bearing on reverse BERWICK AP16 1860 origin c.d.s., KENTVILLE transit c.d.s., and WOLFFVILLE AP16 1860 receiver, almost the twin to another April 1860 cover from the same sender addressee and addressee. Not included in the Firby census. Ex Carey Fox, Koh, Ex H.R. Harmer (Jan. 26, 1931). Signed F. Godden, Brandon Cert. (2001). SG 6a; £5,000..... (5a) \$5,000



# CANADA



219



218



220



221

- 218  **New Brunswick 1851, 3d red, SHEET MARGIN copy, others good margins all around, light shade or faded, very fine, tied by "13" in grid (Fredericton) on small envelope, bearing on reverse FREDERICTON JU 28 1856 c.d.s. and ST JOHN JU29 1856 receiver. SG 2; £700..... (1) \$950**
- 219 P **1851, Prince Albert, 6d slate violet, proof, SPECIMEN in red vertically at right, extremely fine (2)..... Est. Cash Val. \$150 - 200**
- 220 O **1851, Prince Albert, 6d slate violet, laid paper, indistinct target cancel, enormous margins all around, tiny scissor cut at bottom left in margin only, small handstamp on reverse barely show on face at bottom left, very fine. 2017 Greene Foundation certificate. SG 2; £1,300 ..... (2) \$1,650**
- 221 O **1851, Prince Albert, 6d slate violet, laid paper, very rare light RED target cancel, good margins 3 sides to just into frame-line, verge line, fine and rare. Greene Cert. (2017). SG 2; £1,300..... (2) \$1,650**



222

- 222  **Used to New York: 1851, Prince Albert, 6d slate violet, laid paper, large to good margins all around, extremely fine, neatly tied by 6 or 7 ring target cancel on fresh folded letter sheet bearing red Montreal JA 23 1852 c.d.s., matching semi-circular CANADA and PAID. From the Kennedy correspondence, a lovely cover. Greene Cert. (1984). SG 2; £2,600..... (2) \$3,100**



←223

223  Used to New York: 1851, Prince Albert, 6d slate violet, laid paper, used to New York, Two four margined copies (both with creases) one with sheet margin, cancelled by target cancels on blue folded letter bearing red ST. CATHERINES OCT 15 1852 c.d.s. and red two-line CANADA/PAID 10 Cts. re-rated with a manuscript "20," on reverse QUEENSTOWN OCT transit. Ex Brouse. Greene Cert. (2013). (2)..... Est. Cash Val. \$750 - 1,000  
*The C. Firby Census states that there are only 16 covers known bearing a pair or 2 singles, we can only account for 6, some recorded are probably duplicate listings. Obviously a very rare franking, from the famous Kennedy correspondence.*

224 ○ 1851, Prince Albert, 6d grayish purple, laid paper, very attractive target cancel, clear to enormous margins all around, probably sheet margin at left, very fine. Greene Cert. (2017). SG 3; £1,400. .... (2b). \$1,750

225 ○ 1852, Beaver, 3d red, possible Bottom Sheet Margin pair, distinctive "21" in 4 ring cancels, maximum to enormous margins all around, superb. Greene Cert. (2014). (4). .....Est. Cash Val. \$500 - 600

226 ☆ 1853, Beaver, 3d brown red, full o.g., tiny skip, good margins all around deep color, full o.g., tiny skip, very fine. Royal Cert. (1990). Scott 4a. ....(SG 8) £3,000  
*A very rare unused stamp.*

227 ○ 1855, Prince Albert, 6d greenish gray, brilliant colored stamp with strong target cancel irrelevant "soaked through", good to large margins all around, very fine. Greene Cert. (2004). SG 10; £1,200. ....(5b) \$1,200



224



225



226



227





- 228 ☆ 1857, Queen Victoria, 7½d green, regummed good margins all around, filled in thins not mentioned in certificate, an exceptional looking unused stamp, very fine appearance. Greene Cert. (2015). SG 12; £13,000..... (9) \$10,000
- 229 ○ 1857, Queen Victoria, 7½d green, partial 4-ring cancel, large to ample margins all around, almost very fine. SG 12; £2,500..... (9) \$3,500
- 230 ○ 1857, Queen Victoria, 7½d green socked-on-nose, attractive 7 ring target cancel, staggering margins all around, partial imprint at bottom, various small faults and a margin nick, impressive. SG 12; £2,50 (9) \$3,500

Maybe the largest copy we have ever seen of this stamp.



231

- 231 ☒ Used to Great Britain: 857, Queen Victoria, 7½d green, large to good margins all around with frame-line barely shaved but intact, beautifully tied by HAMILTON MY 31 1859 c.d.s. on a most attractive mourning envelope bearing red LONDON JU 15 arrival c.d.s. and ms. "P.(S.S.) American, Quebec,". Royal Cert. (1976) as deep yellow green with old V.G. Greene cachet on back flap and Greene Cert. (2018). SG 12; £5,000..... (9) \$6,000

*A most attractive and pretty cover with enclosure of thanks for acknowledging a death announcement.  
Cover analysis accompanies (see online).*

**COVER CONDITION**

**Minor faults including, but not limited to, file folds not affecting stamps, small tears and some backflap damage have not been noted in the descriptions of this catalogue and are not grounds for returns.**

# 1857 6d Reddish Purple on Very Thick Soft Wove Paper



232



233

- 232 O 1857, Prince Albert, 6d reddish purple, very thick soft wove paper, light 4 ring cancel, good to well clear margins all around, thin (not mentioned in Cert.) very fine appearance. Greene Cert. (2017). SG 23; £4,000.....(10) \$7,500
- 233 O a, 1857, Prince Albert, 6d reddish purple, very thick soft wove paper, good to large margins all around, partially in at right. Greene Cert. (1995). SG 23; £4,000. ....(10) \$7,500

*A very scarce stamp with or without faults. We note in major collections Dale-Lichtenstein 4 and strip of 3, Burrus 0, Ferrari 0, Gross 1, Chapin 1, Samos 1, Hind 0. Four of these seven singles were with faults.*



- 234 O 1859, Prince Albert, 10c black brown, lightly cancelled, typical centering for the issue, a textbook example of this popular shade, about fine ..... (16) \$6,500
- 235 S 1859, Queen Victoria, 12½c yellow green, plate proof on card overprinted SPECIMEN in red, reading up, very fine (18S) .....Est. Cash Val. \$100 - 125
- 236 ☆ 1868, Large Queen, 1c yellow orange, o.g., centered, very fine. SG 56a; £1,100.....(23) \$1,750
- 237 ☆ 1897, Queen Victoria Jubilee, \$1 lake, lightly hinged, fresh bright color, very fine .....(61) \$1,000

## SPECIAL VIEWING - At our Offices

The week prior to the auction, lots will be available for viewing at our offices in Yorktown Heights, NY.

Less than 40 miles from mid-town, NYC.

Convenient to Westchester Airport

or

a scenic 40 minute train ride along the majestic Hudson River.



**Call for details and appointment**



# 1912-25 Admiral Blocks of Four



- 238 ☆☆☆+ 1912, King George V "Admiral", Blocks of 4, 1¢ green, wet printing, 2¢ green, dry print, 3¢ brown, dry print, 3¢ carmine, wet print, Blocks of 4 never hinged fine to very fine C.S.C\$1728 .....104 - 109) CS\$1,728
- 239 ☆☆☆+ 1922, 1¢ true orange yellow, die I, wet printing, Block of 4, a very distinctive color, close to the \$1.00 never hinged, extremely fine .....(105) CS\$960
- 240 ☆☆☆+ 1925, 4¢ yellow ocher, Block of 4, dry printing, never hinged, extremely fine and lovely..... (110d) CS\$840
- 241 ☆☆☆+ 1924, 5¢ rose violet, wet printing, Block of 4, never hinged, natural gum skip, almost very fine .....(112) CS\$480
- 242 ☆☆☆+ 1912, 7¢ yellow ocher, wet printing, Block of Four, never hinged, fine .....(113) CS\$640
- 243 ☆☆☆+ 1924, 7¢ red brown, wet printing, Block of 4, never hinged, very fine .....(114b) CS\$540
- 244 ☆☆☆+ 1925, 8¢ blue dry printing, Block of 4, never hinged, extremely fine..... (115) CS\$720
- 245 ☆☆☆+ 1922, 10¢ light blue, dry printing, Block of 4, never hinged, fine .....(117iii) CS\$560
- 246 ☆☆☆+ 1925, 10¢ yellow brown dry printing, Block of 4, never hinged, very fine..... CS\$960 (118b)





247 ex



248 ex



249 ex

- 247 ☆☆☆+ Postage Due: 1906-28, 1¢-10¢ complete, Blocks of 4, never hinged, very fine.....(J1-J5) C\$2,080
- 248 ☆☆☆+ Postage Due: 1930-32, 1¢-10¢ issue complete, Blocks of 4, never hinged, very fine .....(J6-J10) \$2,000
- 249 ☆☆☆+ Postage Due: 1934, 1¢ to 10¢ Set of four, Bblocks of 4, never hinged, very fine..... (J11-14) \$920

## Cape of Good Hope



250



251



252



253



254

- 250 O 1853 Perkins Bacon printing, 1d pale brick red on deeply blued paper, SQUARE PAIR, neat triangular grid cancel, good to enormous margins all around, very fine. SG 1; £950 as singles. ....(1a) \$975
- 251 O 1853, Perkins Bacon printing, 1d deep brick red on deeply blued paper, lightly cancelled, good to large margins all around, sheet margin watermark at left, far rarer shade than reflected in catalogue, extremely fine. SG 1a; £475..... (1b) \$475
- 252 O 1853, Perkins Bacon printing, 4d deep blue on deeply blued paper SQUARE PAIR, pos. X4B/A(Die A1/4R E stroke) showing lovely ivory head, grid cancels large to enormous margins all around, extremely fine. SG 2; £550..... (2a) \$825
- 253 O 1853, Perkins Bacon printing, 4d deep blue on deeply blued paper, good margins all around, neat cancel, very fine. SG 2; £275..... (2a) \$375
- 254 O 1853, Perkins Bacon printing, 1d brick red on bluish paper, lightly cancelled, good to enormous margins all around, showing adjacent stamp at left, bright fresh color, extremely fine. SG 3; 375..... (1) \$400





255

255  **USED TO INDIA: 1855 “Triangular”, Perkins Bacon printing, 4d deep blue on white paper, SQUARE PAIR, good to enormous margins all around to just touching left bottom, horizontal filing crease, tied by delicate CGH triangular grids to neat envelope bearing red embossed “from CAPE OF GOOD HOPE” embossed ribbon, on reverse CALEDON 22 SP 1858 (oval) origin red CAPETOWN transit and boxed CALCUTTA SHIP LETTER. SG 6. (4b) .....Est. Cash Val. \$1,000 -1,500**

*4d paid the rate to the ship and 4d paid the ship note to India, just eleven covers are known to exist to India, less than half the number known to Canada. We have found 1 cover in “Bonaventure”, 1 in “Maximus”, 5 in Dillaway/Hackmey and none in Dale-Lichteinstein, “Medina”, Franschoek, Joseph & Indusphon. Truly a Rare Offering*



256

**- Wood Blocks -**



257

256 O **1861 “Wood Block”, 1d carmine, good to clear margins all around, superb strike of “C/GH” cancel, extremely fine. Brandon Cert. (2017). SG 13a; £3,500..... (7a) \$4,000**

*A wonderful stamp.*

257 O **1861 “Wood Block”, 1d carmine, light grid cancel, very fine. A.P.S. Cert. (1981). SG 13a;£3,500(7a) \$4,000**

258 ☆ **1863-64, De La Rue printing, 4d deep blue SQUARE PAIR, o.g., hinge remnants, extremely fine. SG 19; £600.....(13) \$650**

259 O **1863-64, De La Rue printing, 1s bright emerald green, light grid cancel, enormous margins to frame-line barely touched at right, almost very fine. SG 21; £700. ....(15) \$725**



258



259

# CYPRUS



260

260 ☆ 1882, Queen Victoria, ½pi emerald green, Die I, Crown CA Watermark, original gum, fabulous centering, perforations clear, the highest valued stamp of Cyprus, outside of the First Issues., very fine An incredibly rare stamp. SG 16; £5,000. ....(19b) \$6,000

*Our records find the Miller Collection had a pair (off-center), Cruittwell had one and Constantinides one. No copies were found in Aphrodite, Burrus, Lilly, Samos, Hind, Dale- Lichtenstein, North and Richardson.*



261 ex



262 ex

- 261 S Falkland Islands, 1929-32, Whale & Penguins, 4d-£1, perforated "Specimen", less ½d to 2½d low values, o.g., lightly hinged, very fine. SG 120-26S..... (54-64S) £1,000
- 262 ☆ Gambia, 1922, King George V, ½d to 10s, set of 23, lightly hinged, complete except "a" numbers, brilliant colors, hard to find so complete, very fine. SG 118 - 142; £395. ....(102-124) \$477

# GREAT BRITAIN

- 263 ☒ G.B. Stampless: 1814-1819, a fascinating quintuple correspondence of covers "Chasing the Fleet", 1814 folded letter from Campfield to "M. John Strachan midshpman H.M. Ship Tigris, Cork Harbor Ireland or Elsewhere"; 1815 folded letter same addressee and origin and ship "Plymouth or Elsewhere", Jan 1817 folded letter," all same but "Barbados or Elsewhere"; June 1817 folded letter, all same but "Spithead or Elsewhere"; 1819 folded letter all same but "Scherness or Elsewhere"; mixed frankings, probably interesting content with continuity, also a local folded letter Aberdeen to Compfield, filing creases and separations, but intact to read carefully. Have a good time. ....Est. Cash Val. \$200 - 250







264

264  1840, Mulready Letter Sheet, 1d black, used May 9, 1840 (4th day of usage), cancelled by red Maltese Cross (£500 premium), on reverse probable receiver, circular date stamp, from London to Cheltenham, usual creases and sealed tear on the reverse, S.G. Spec.ME1. Brandon Cert. (2012)..... Scott U3 £2,500



265

265  Used to Scotland: 1840, Mulready Letter Sheet, 2d blue, double rate, cancelled by Red Maltese Cross and bearing on reverse ms. "26 January 1841" plus Red boxed probable KELSO origin and Red JAN 27 1841 c.d.s. receiver. The contents of the letter must have been quite bulbous due to the alignment of the cancel on reverse. ....Scott U4 £2,500

"Not philosophers, but fret-sawyers and stamp collectors compose the backbone of society."  
 ALDOUS HUXLEY





- |     |   |  |                                   |
|-----|---|--|-----------------------------------|
| 266 | O | 1840, 1d black, Plate 11, A-K, black Maltese cross cancel, good to large margins barely touched at bottom right. A.P.S. Cert. (2008). Scott \$4,500. SG 2..... (1)   | £4,600                            |
| 267 | O | 1878, Queen Victoria, £1 brown lilac, Maltese Cross Watermark, white paper, Pos. A-A, top left Sheet Copy, clean GLASGOW JY3 82 c.d.s., typical centering for an "A" row stamp, filled thin at top, fresh bright example. Scott 75..... (SG 129) | £9,000                            |
| 268 | O | 1882, Queen Victoria, 5s rose on white paper, Pl. 4, Anchor Watermark, lettered C-E, neat LEADENHALL ST. AP 1 84 c.d.s., well centered, very fine almost a premium stamp. SG 134; £4,200 Plus 75% cancel/centering..... (90a)                    | \$5,000 Plus 75% cancel/centering |
| 269 | O | 1882, Queen Victoria, £5 orange on white paper, very neat MAIDSTONE, AU 25 02 c.d.s. perfect centering, deep color, barely perceptible reinforced horizontal crease, extremely fine appearance. SG 137; £4,750..... (93)                         | \$5,000                           |
| 270 | O | 1884, Queen Victoria, 10s ultramarine on bluish paper, Anchor Watermark, light oval c.d.s., perfectly centered, small thin spot, very fine appearance. Signed H. Block, Foundation Cert. (2011). SG 177; £8,250 +50%..... (109b)                 | \$8,500                           |
| 271 | ★ | 1929, £1 P.U.C., lightly hinged, almost perfect centering, fresh, very fine. SG 438; £750..... (209)   | \$800                             |
| 272 | ★ | Official Govt. Parcels, 1897, Queen Victoria, 1d lilac, all perforations clear, o.g., hinge remnant, very fine. SG O69; £650..... (O37)  | \$625                             |
| 273 | ★ | Grenada, 1943, King George VI, 10s slate blue & bright carmine, perf 12, narrow frame, lightly hinged, almost very fine, only 798 printed. Scott 142a. ....(SG 163c)   | £750                              |

“Take time to deliberate; but when the time for action arrives, stop thinking and go in.”

.....Andrew Jackson



Harmers International Auctions move FAST.....  
Bid quickly and decisively to avoid disappointment.



# HONG KONG



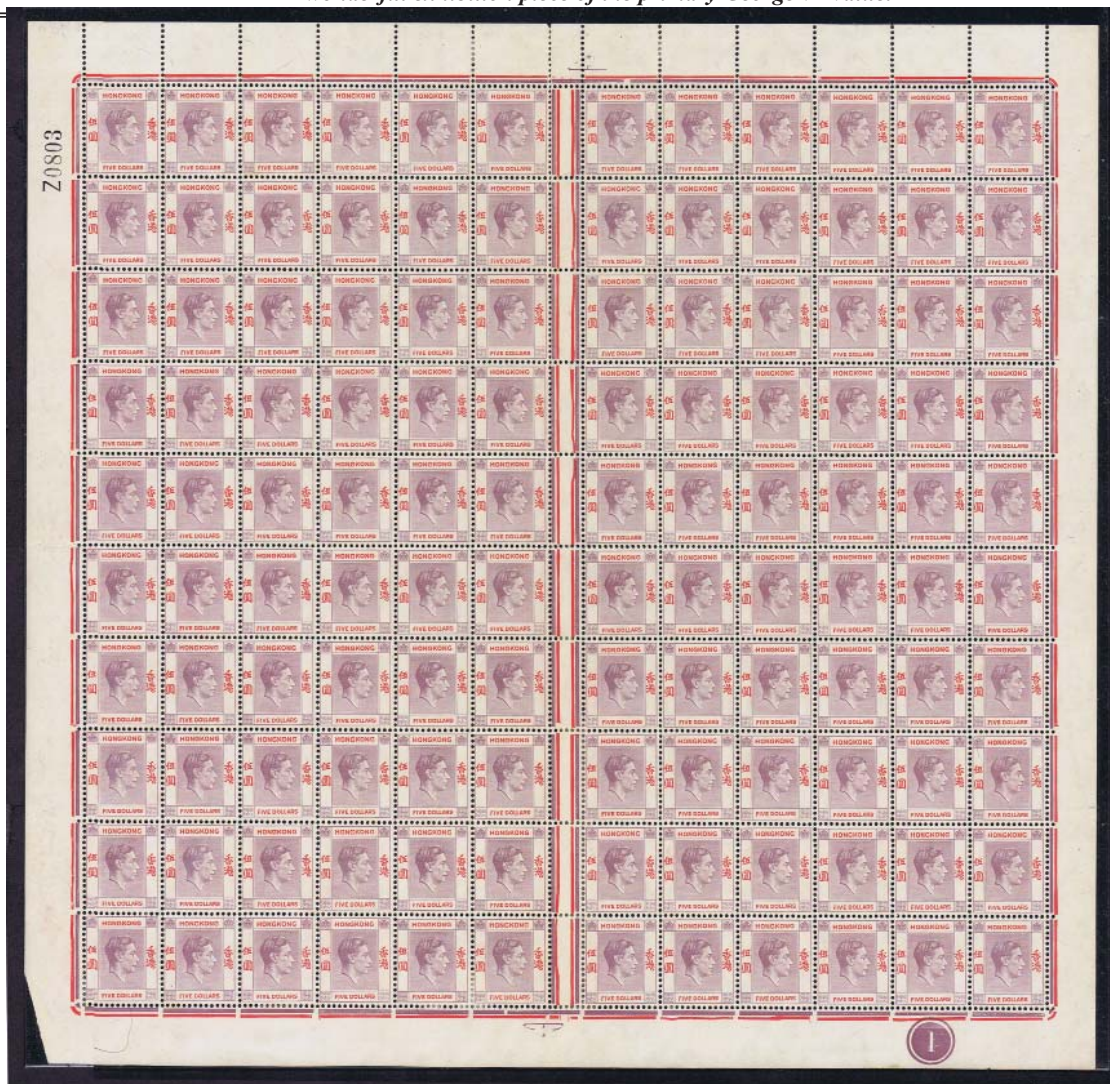
274



276

274 ☆☆☆+ 1938, King George VI, 10\$ green and violet SHEET MARGIN BLOCK OF 4, never hinged (appropriate brown gum), the bottom left copy bears the variety broken character “Hong” Webb Pos. R5/1LP, plus unpriced malformed “S”, extremely fine. Scott 166 var.....(SG 161 var.) £2,800

*A wonderful exhibition piece of the primary George VI value.*



275

275 ☆☆☆+ 1938, King George VI, 5\$ dull lilac & scarlet FULL MARGINED COMPLETE SHEET OF 120, £8,400 showing gutter and Plate Number 1 and serial number Z0803 in black, stamps never hinged except for 2 stamps. Appropriate gum for the 1938 First Printing, small thin in margin at top left, and a few minor separations, overall very fine centering. Scott 165..... (SG 159)

*Exceptional show piece.*

276 ☆ 1938, King George VI, \$10 green & violet, o.g., very fine. Scott 166..... (SG 161) £700



# INDIA

277 ☒ **1822-24, 4 stampless covers, all to India**, all bearing large red circular CALCUTTA G.P.O hand-stamps, 1 being with SHIPLETTER, 3 with black G.P.O ovals and 1 s.l. G.P.O. one from London and 2 from St. Omer by various ships, 2 forwarded, 3 full letters. Great study. Dealer Retail \$480.Est. Cash Val \$200 - 250



- 278 ▲ **1852, Scinde Dawk, ½a white**, neat dotted cancel, large margins, strong impression, cut square on piece, discoloration as usual from gum soak, vertical crease, fine. Scott A1..... (SG S1) £2,500.
- 279 ○ **1852, Scinde Dawk, ½a white, neat dotted grid cancel**, large margins all around, a few creases, fine. SG S1..... (A1) \$£2,500.
- 280 ▲ **1852, Scinde Dawk, ½a white**, dotted grid cancel on cut on square piece, toning transfers to paper from what we believe is o.g. as found on unused copies, wonderfully large margins and crisp impression, fine. SG S1; £2,500. (A1)..... Est. Cash Val \$500 - 600
- 281 ○ **Used in Singapore: India, 1854, Queen Victoria Lithographed, 1a deep red, Die I, crisp B172 in grid cancel**, margins all around, very fine (SG 11).....Est. Cash Val \$200 - 250
- 282 ○ **Used in Singapore : India, 1854, Queen Victoria Lithographed, 2a green**, cancelled by distinct B172 in grid, good margins all around, very fine. SG 31. (5).....Est. Cash Val \$150 - 200
- 283 ○ **1854, Queen Victoria Lithographed, 4a blue & red, Head die 3, frame die 2, 4th printing**, Used in Aden, cut to shape, barred "124" cancel (SG 23 var.).....Est. Cash Val \$200 - 250
- 284 ○ **1854, Queen Victoria Lithographed, 4a blue & red, margins all around, just clear at bottom to large at top**, indistinct numeral in grid cancel, small thin and stain spot, plus cut to shape copy, fine ..... £650 for former (SG 22 var.)
- 285 ☆ **1855, Queen Victoria Typographed, 4a black, blue glazed paper**, unused, deep color, a few short perfs, fine. Scott 9. ....(SG 35). £1,400
- 286 ☆ **1860, Queen Victoria Typographed, 2a dull pink, white paper**, traces of o.g., well centered, bright color, faint internal crease, almost very fine. Scott 13..... (SG 41) £1,300

LOOKING TO ENLARGE IMAGES . . GO TO OUR WEBSITE  
HARMERSINTERNATIONAL.COM





## 1856 2a Yellow Green Prepared for Use but Not Officially Issued



287



288

- |     |   |   |                  |
|-----|---|---|------------------|
| 287 | ★ | 1856, Queen Victoria Typographed, 2a yellow green, white paper, prepared for use but not officially issued, almost perfectly centered o.g., very fine, extremely rare. Indistinct handstamp on reverse. Scott 14..... (SG 50) | £3,750           |
| 288 | ★ | 1856, Queen Victoria Typographed, 2a yellow green, white paper, prepared for use but not officially issued IMPERFORATE, unused, good margins all around, barely faint spot on face, very fine. Scott 14a. ....(SG 50a)        | £8,000 as a pair |

*We note from our studies and have found, the following: no copies in the Ulrich, "Grand Prix," Koh-i-Nor, or "Rajah" Collections, Obviously extremely rare perhaps less than 10 examples exist. No pairs have been found.*

- |     |   |  |             |
|-----|---|--|-------------|
| 289 | ★ | 1859, Queen Victoria Typographed, 2a yellow buff, white paper, part o.g. light shade and faint gum toning, fine. Scott 15..... (SG 42)   | £1,200      |
| 290 | ★ | 1856, Queen Victoria Typographed, 4a black, white paper, o.g., centered, intense color, very fine. Scott 16..... (SG 45)   | £900        |
| 291 | ☒ | Used to Aden: 1856, Queen Victoria Typographed, 4a black, white paper, tied by neat dark blue POON SP 26 62 duplex onfolded letter sheet (some reverse tears) bearing ms. "stamped" on reverse red BOMBAY SP 2-62 transit and STR. POINT 5 OCT 62 ADEN receiver. SG 45. (16).....Est. Cash Val | \$100 - 150 |



289



290

290





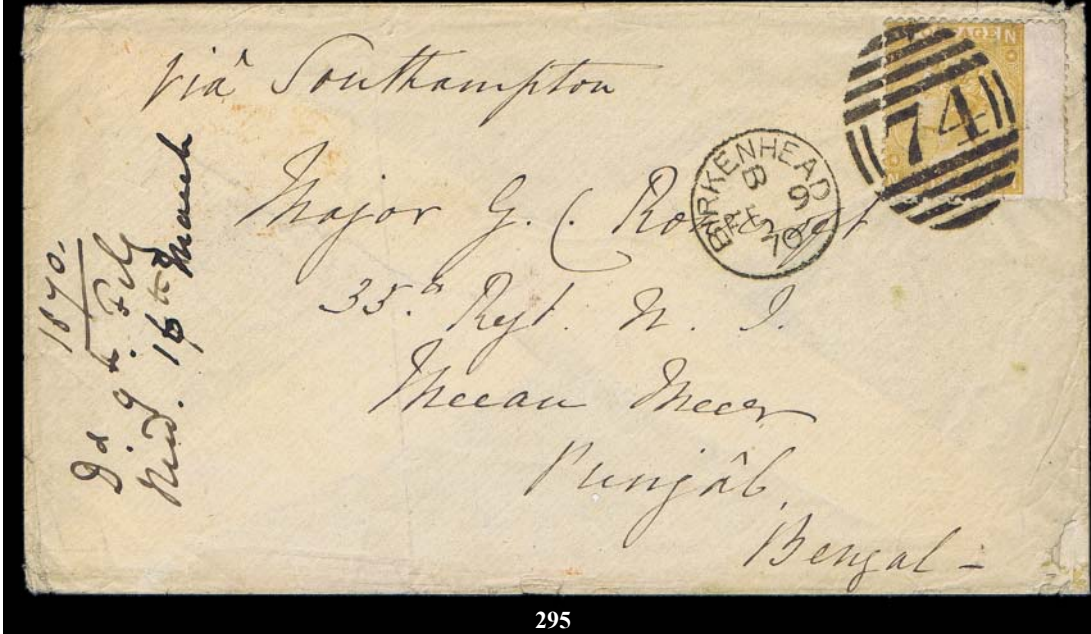
292



293



294



295

- 292 ☆ 1856, Queen Victoria Typographed, 8a pale carmine, white paper, o.g., few wrinkles, excellent centering, very fine. Scott 18..... (SG 48) £1,300
- 293 ☆ 1856, Queen Victoria Typographed, 8a carmine, white paper, o.g., hinge remnant. Scott 18....(SG 48) £1,200
- 294 ☆ 1856, Queen Victoria Typographed, 8a carmine, white paper, unused, fine. Scott 18..... (SG 48) £1,200
- 295 ☒ Used to India: Military G.B. 1867, 9a bistre wing margin copy, tied by BIRKENHEAD FE 9 70 #74 duplex, on reverse red LONDON transit SEA POST 27 2 70 transit, CANTONMENT'S POST OFFICE and violet MEEAN MEER receiver, S.G. 52, addressed to major G.C. Rowcroft 35th Regt. Native Infantry with "Bengal" used as synonymous with India.....Est. Cash Val. \$100 - 125



296



297

- 296 ☆ 1865, Queen Victoria "Crown Colony" Issue, 4a green, o.g., hinge remnant, fine. Scott 24..... (SG 64) £1,300
- 297 ☆☆/ ☆ ☒ 1868, Queen Victoria "Crown Colony" Issue, 8a rose, Block of Four, 2 never hinged, 2 lightly hinged, very fine. Scott 28.....(SG 73) £280 as hinged





209

298 ☆ 1866, Queen Victoria Overprinted Fiscal Stamp, 6a purple, type I, no cracks or scuffs, incredible deep color and undisturbed front, disturbed o.g., very fine. Scott 29.....(SG 66) £2,750

299 ☆☆☆+ 1883-1946, Queen Victoria "Empire" Issue, 10 never hinged blocks, S.G. 87 block of 24, S.G. 115 block of 32, S.G. 163 margin block of 6, S.G. 165 corner block of 16, S.G. 259 corss-roads block of 16, S.G. 278-81 corner blocks of 32, never hinged, very fine. £466 as hinged

300 ☆☆☆+ 1882, Queen Victoria "Empire" Issue, 3a orange, Margin Block of 12, never hinged, fine. Scott 41a. £420 as hinged  
.....(SG 93).

301 ☆☆☆/ ☆+ 1883, Queen Victoria "Empire" Issue, 1r slate, Margin Block of 20, never hinged except 2 stamps, 7 stamps with minor faults, fine to very fine. Scott 46. ....(SG 101) £900 as hinged



302

302 ☐ Used to Chile 1898, Queen Victoria, 1/4a on 1/2a blue green, block of 8 (some rubbing) tied by SEA POST OFFICE MY 20 99 c.d.s. strikes on reverse of 6 pies Registered Stationery, bearing on front boxed R BOMBAY, violet LONDON transit, manuscript "31" "623" and Valparaiso Registered Label, on reverse Valparaiso receiver, rare. SG 110. (53). .....Est. Cash Val. \$75 - 100

303 ☆ ☆ 1898, Queen Victoria, 1/4a on 1/2a blue green, double impression of stamp, never hinged, fine. B.P.A. Cert. (2017). Scott 53b..... (SG 110b) £750

304 ☆☆☆/☆ 1903, King Edward VII, 2r to 15r, 2r(2), 3r(2), 5r(2), 10r, 15r, most never hinged, 15r o.g., fresh gum and colors, fine to very fine. Scott 71(2), 3r(2),74(2),75,2r(2),3r(2),5r(2). ....(SG 138-44) £1,540

305 ☆ 1909, King Edward VII, 25r brownish orange & blue, fresh, almost very fine. Scott 76..... (SG 147) £2,750









306



307



308

- |     |   |   |      |
|-----|---|---|------|
| 306 | O | 1909, King Edward VII, 25r brownish orange & blue, attractive RED CALCUTTA 25 JA 10 telegraph cancel, o.g., very fine. Scott 76. ....(SG 147) | £570 |
| 307 | O | 1909, King Edward VII, 25r brownish orange & blue, black BOMBAY 27 JU 11 G.T.O cancel (telegraph), very fine. Scott 76..... (SG 147)          | £570 |
| 308 | O | 1909, King Edward VII, 25r brownish orange & blue, neat RED CALCUTTA 28 NOV treasury cancel, very fine. Scott 76. ....(SG 147)                | £570 |



310



311 ex



312 ex



313 ex



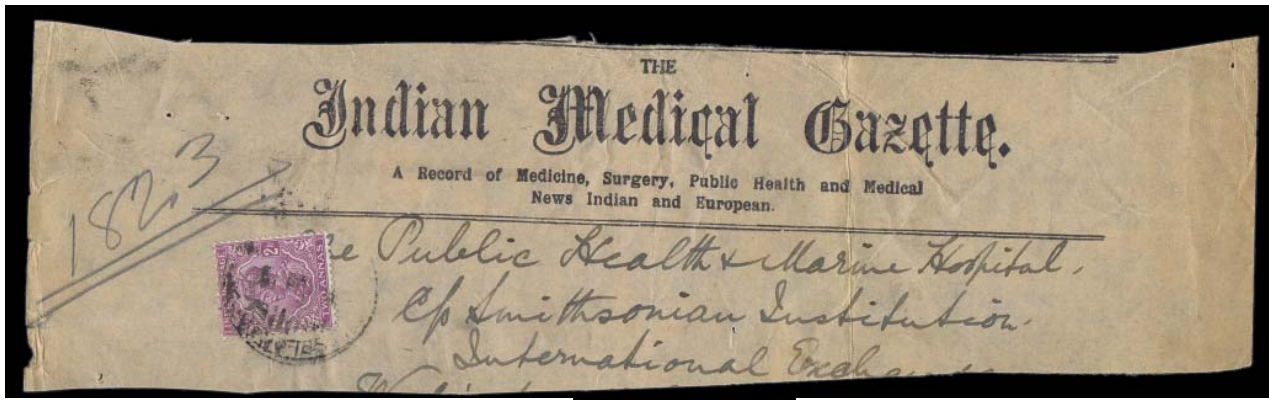
315

- |     |     |   |                            |
|-----|-----|---|----------------------------|
| 309 | ☒   | 1919, King George V, 2a purple Indian Medical Gazette, Calcutta, magazine header, dated CALCUTTA c.d.s. JUN 5/1919, paying the 2 annas 2nd class UPU newspaper rate, a scarce rate. SG 166. (84).....Est. Cash Val.   | \$50 - 75                  |
| 310 | ★ ★ | 1913, King George V, 25r orange & blue, never hinged, fresh colors, fine. Scott 98.....(SG 191)   | £600 as hinged             |
| 311 | ★   | 1926, King George V, 5r - 25r, l.h. to o.g. 5r(2), 10r(2), 15r(2), 25r, lightly hinged to o.g. 10r(2), 15r, very fine. Scott 122-125..... (SG 216-219)  | £1,025                     |
| 312 | ★   | 1937-40, Set to 15r, l.h. to o.g., very fine. Scott 150-166..... (SG 247-263)   | £397 as individual stamps  |
| 313 | ★   | 1937-40, King George VI, 3p-25r complete, lightly hinged. Scott 150-167..... (SG 247/64, 277)   | £691 as individual stamps  |
| 314 | ★ ★ | 1937, King George VI, 1/2a red brown, never hinged, pane of 80 with border margins and arrows, very fine. Scott 151..... (SG 248)   | £800 as hinged             |
| 315 | ★ ★ | 1937, King George VI, 25r slate violet & purple, never hinged, very fine. Scott 167..... (SG 264)   | £275 as hinged             |
| 316 | ★ ★ | 1948, Gandhi complete, never hinged, very fine. Scott 203-206..... (SG 305/8)   | £451 as singles for hinged |
| 317 | ★ ★ | 1948, Gandhi complete, 3 wit Sheet margins, never hinged, extremely fine. Scott 203-206.....(SG 305/8)  | £451 as hinged singles     |
| 318 | ★   | 1948, Gandhi complete, Set of 4 very l.h. to o.g., very fine. Scott 203-206..... (SG 305/8)   | £451                       |
| 319 | ☒   | Korean War Military Cover 1951 -52, folded letter sheet missing some back flaps bearing red Korean circular handstamps addressed to "Capt G.E.G. Rounds, 13th Aux Pioneer Battn, Indian Army KEI JO Korea," we would guess very rare correspondence for this war.....Est. Cash Val. | \$100 - 125                |

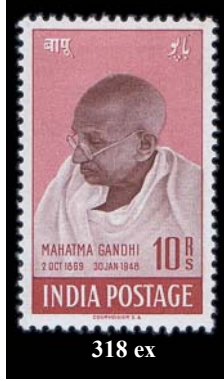
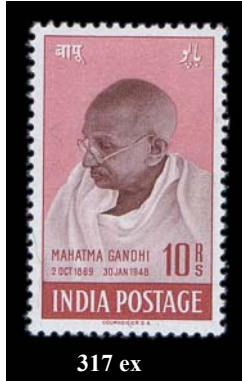
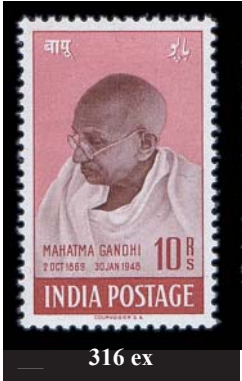
**Officials**

- |     |   |  |         |
|-----|---|--|---------|
| 320 | O | 1866, Queen Victoria, 2a purple, thick blue glazed paper, indistinct numeral grid cancel, fine. Scott O11..... (SG O15)  | £600    |
| 321 | O | 1866, Queen Victoria, 2a purple, thick blue glazed paper, light "23" in grid cancel, fine. Scott O11. ... (SG O15)   | £600    |
| 322 | O | 1866, Queen Victoria, 4a purple, o.g., rubbed impression though printing distinct, it would be incredibly hard to find another unused example of this stamp. Koh-i-Nor had no example. Scott O13. ....(SG O17) | £10,000 |

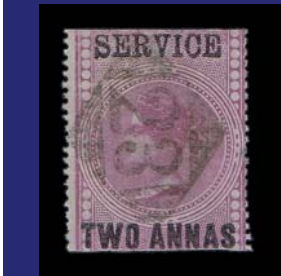




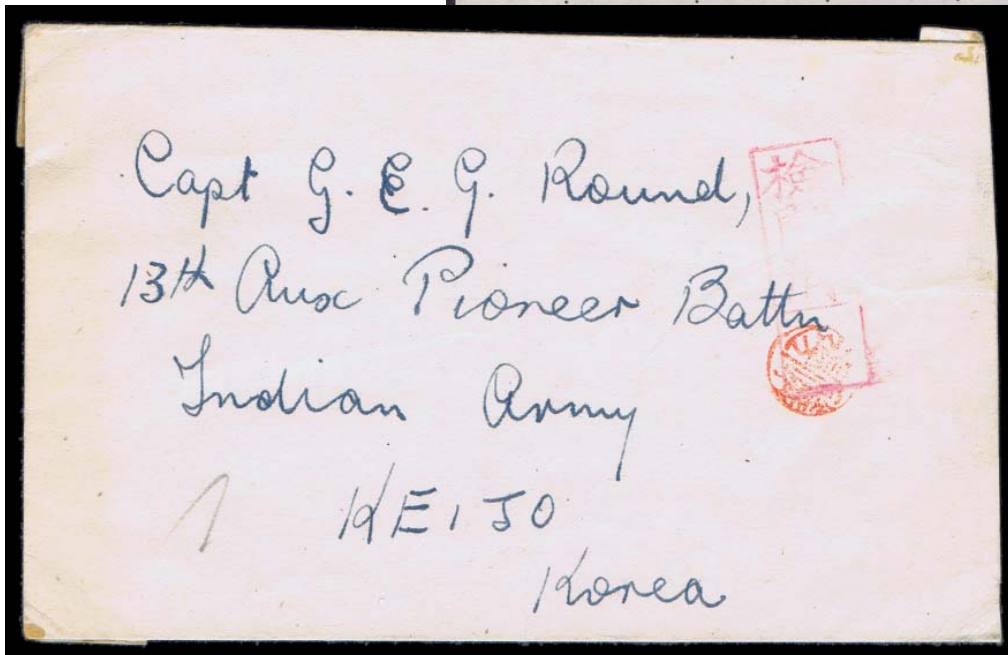
309



314-->



319





**Indian States**

- 323 ☆ **Chamba, 1938, 3P to 10r**, lightly hinged, fine to very fine. SG 82-97..... (70-85) £787
- 324 ☆ **Faridkot, 1887-96, State complete, Scott 18 stamps**, l.h. to o.g. (4a, 6a unused), fine to very fine. SG 01-015; £459 as singles..... (4-09) \$544
- 325 ☆☆☆ **Gwalior, 1949, 2r dark brown and dark violet, Left Sheet Margin Gutter Premium Block of 8**, never hinged impressive position block, extremely fine. SG 1L3; £400 as l.h ..... (113) \$590 as n.h.
- 326 ☆ **Jammu & Kashmir, 1877-78, 1a sage green**, o.g. quite rare this nice, very fine. Sismondo Cert. (2002). SG 36; £250.....(46) \$225
- 327 ☆☆☆ **Jind, 1938, 15r brown and green, Gutter Block of 4, with selvage**, never hinged, post office fresh colors, S.G. 125 £440 as hinged and no premium for position, extremely fine. SG 125; £440.....(149) \$440 as singles
- 328 ☆ **Jind, Official 1940-43, set of 14**, lightly hinged, brilliant colors, very fine. SG 073-86.....(062-75) SG £442 as singles





# IRAN



329



330



331

- 329 ▲ 1917, Surch Type I, 2a on 1 pi ultramarine, neatly tied on piece by Baghdad c.d.s, fine. Brandon Cert. (2017). SG 17; £400.....(N18) \$350
- 330 ▲ 1917, Surch. Type I, ½a on 10pa green, tied on attractive piece by BAGHDAD 1917 c.d.s., very fine. Brandon Cert. (2017). SG 13; £375..... (N21) \$375
- 331 O 1917 Surch Type I, 1a on 20pa, rose, very lightly cancelled, very fine. Brandon Cert. (2017). SG 21; £425 ..... (N24) \$375

# IRELAND



332

- 332 ☆ ☆ 1922, Thom Provisional Govt. Black Blue Overprints on King George V “Seahorses”, 2s6d chocolate brown, 5sh rose carmine, 10sh dull gray blue, SET OF THREE, never hinged, excellent centering, one of the ultimate sets, very fine. Brandon Cert. (2017) for set. SG 44/46; £1,525 as hinged singles. ....(36-38) \$3,425



333



334



335

- 333 ☆ ☆ 1927, Free State overprint on King George V “Seahorse”, Composite Setting with wide and narrow dates, 2s6d chocolate brown, Sheet Margin Pair, never hinged, extremely fine. SG 83a; £300 as hinged. ....(77a) \$775
- 334 ☆ 1927, Free State overprint on King George V “Seahorse”, Composite Setting with wide and narrow dates, 5s rose carmine, PAIR, lightly hinged, almost very fine. SG 84a; £450..... (78a) \$700
- 335 ☆ 1927, Free State overprint on King George V “Seahorse”, Composite Setting with Wide and Narrow dates, 10s dull gray blue, PAIR, lightly hinged, almost very fine. Scott \$1,700. SG 85a.....(79a) £1,200



- 336 ☆ O **Jordan, 1923, 1m to 20d, 11 different, plus 3 extra, 1 used**, this is a hard to find group, also 5 (used), fine to very fine, 2 Royal Certs (1991) for S.G. 39,46b .....(SG 55-57,60,62-68) £529
- 337 ☆ **1923, 1m to 20d, 11 different reading up and down comp.**, o.g., fine to very fine. S.G. 102A, 104-107A, 98B-103B, 108B ..... £832
- 338 ☆ ☆ **1924, Officials, ½pi red, detached sheet margin with inscription**, never hinged, extremely fine.....(01) \$200
- 339 ☆ ☆ **Kuwait, 1923-24, ½a green, double overprint**, never hinged, centered, fresh, very fine. SG 1a; £350 as hinged..... (1a) \$375 as hinged
- 340 ☆ ☆ **Leeward Islands, 1938-52, ¼d-£1 King George V complete, perf 14**, an exceptional never hinged set (\$5.80 difference for 3 lightly hinged stamps), very fine..... (103-115) \$750
- 341 ☆ ☆ ⊕ **1938, King George VI, 2d olive gray, error “shifted duty plate” affecting value and country tablets, Left Marginal Block of 16**, never hinged, very fine, M. Payne unlisted, an interesting error caused by replacement of a damaged duty plate but not placed in the correct position, we have not seen this before. SG 103 var. (107 var.) .....Est. Cash Val. \$300 - 400
- 342 ☆ **Long Island, 1916, Long Island, 1d blue**, unused, enormous margins probably corner copy in very fresh condition, exceptional stamp, extremely fine..... (SG 11) £600



343

## MALAYA



344

- 343 ☆ Straits Settlements, 1884, 8 in red on 8 cents in blue on 12c dull purple, unused, “faded and discolored” which is a bit harsh, good perforations, a fine copy of this great rarity. B.P.A. Cert. (2004). Scott \$11,000. SG 80b.....(66) £11,000

*One of the great multiple surcharged stamps in British Commonwealth philately, only 60 produced. We note the following each had 1: Tay, Naylor, Woods, Burrus, Lilly, Ferrari (1 or 2) Hind, Tiong, Spink 10/28/17 2, Asch 2, Sidney, Harris, Samos, Nathan 0, 13 copies, 6 with faults or no gum, a truly rare and impressive stamp.*

- 344 O Pahang, 1889, 8c orange, “PAHANG” overprint on Straits Settlements, very light cancel and quite well centered for this issue, fine and very rare. Royal Cert. (2002). SG 2; £1,800.....(2) \$2,000

*George Asch one of the great collectors of British Asia had 3 o.g. copies of the 8c and only 1 used. He was quoted that his copy “was the only used copy he had ever seen.” We think this is scarce and is the equal to his.*

*“Letters are something from you. It's a different kind of intention than writing an email”*

*..... Keanu Reeves*



341



336 ex



337 ex



338 ex



339 ex



340 ex



342

“More than kisses, letters mingle souls.”  
 — John Donne



# MAURITIUS



344



346

345 ☆ 1848-59, "Post Paid", EARLIEST IMPRESSION 1d orange vermillion on yellowish, neat sharp barred cancel, 4 outstanding margins, crisp and deep impression, a few small faults that detract little from this lovely classic stamp. Brandon Cert. (1979). Scott 3..... (SG 3) £18,000  
*Very elusive and far, far rarer than the more common early impressions.*

346 O 1859, Lapirot issue, 2d blue on bluish, Early Impression, marginal or corner copy, neat grid cancel, scissor cut in bottom left corner, clear of design., very fine. Scott 14B. SG £3,250.... (SG 37 var.) \$3,500  
*Better than or equal to the best of the early impression singles in Dale- Lichtenstein and Kanai.*



347



348



349



350

347 O **Montserrat, 1876, "MONTSEERRAT" on Antigua 6d green, "S" inverted**, very light cancel showing the error, deep color, bottom left corner crease, fine. SG 2b; £1,200.....(2c) \$1,350

348 S **1922, King George V, 1½d orange yellow, overprinted "SPECIMEN", Strip of 3, Multiple Script CA watermark Type D12**, the right hand showing the short top to "N" never hinged to lightly hinged, very fine, rare, only 7 examples exist. SG 67S. (58S).....Est. Cash Val. \$250 - 300

349 ☆ **New Britain, 1914, G.R.I. 3d on German New Guinea 25pf black & red on yellow, "G.R.I." and value 6mm apart, o.g., very fine. Signed Richter.** SG 7; £375..... (7) \$375

350 ☆ **1914, G.R.I. 3d on German New Guinea 30pf black & orange on buff, o.g., very fine. Signed Richter.** SG 8; £475. ....(8) \$475

Cleaning your collection?  
 Harmers International  
 can help.



- \* Auction
- \* Private Treaty
- \* Purchase
- \* Donation
- \* Estate Management
- \* Ebay and other on-line sites

eMail : [info@HarmersInternational](mailto:info@HarmersInternational) call or fax



- 351 ☆ **New Zealand, Postal-Fiscal, 1952, £3 10s rose INVERTED WATERMARK, original gum, impeccable centering (should be graded), brilliant color, extremely fine. Brandon Crt. (2004). Scott AR92 var..... (SG F209w) £3,500**  
*The highest listed catalogue value for any New Zealand Post WWII Postal Fiscal - A gem.*

- 352 ☆ ☆ **Nigeria, 1938, King George VI, 5s black & orange, perf 13x11½, n.h., absolutely impossible to find, very fine. Scott 64c.....(SG 59) £110 as hinged**
- 353 ☆ ☆ **North Borneo, 1944, Japanese Occupation, 1s to 1y, short set of 13, set less high catalog value 30s, low values backstamped Equitable Stamp, almost all never hinged, very fine. Scott N34-47; \$465 less N45..... (SG 35-48) £448 less 46**
- 354 ☆ **Northern Rhodesia, 1925, King George V, ½d-20s complete, l.h.to o.g., very fine. Scott 1-17. ... £874 as single (SG 1/17)**
- 355 ☆ ☆ **St. Helena, 1868, Queen Victoria, 2d on 6d yellow, perf 12½, Type B surcharge, o.g., decent centering for this issue, very fine. Sismondo Cert. (2004). SG 9; £180. ....(19) \$200**
- 356 ☆ ☆ **St. Lucia, 1860 (1d)-(6d) Queen Victoria complete, perf 14 to 16, first issue, set of 3 o.g., well centered, fresh colors and rare this nice, very fine. Sismondo Crt. (2008) for #3. SG 1/3; £625.....(1-3) \$685**



Don't hold back - Go for it!!!!



# ST. VINCENT

The following 15 lots comprise a small but incredibly fresh selection of St. Vincent classics far superior to the great old-time collections.

*See the Collections & Various Section for the two lovely remainders.*



357

- |   |     |   |         |
|---|-----|---|---------|
| 357   | ☆   | 1875-78, Queen Victoria, 6d pale green, perf about 15, Watermarked Sideways o.g. bright colour, almost very fine, handstamp. Scott 14 a..... (SG 26)      | £1,600  |
| 358   | ☆   | 1875, Queen Victoria, 1s claret, perf 11-12½, o.g., nice centering for the issue, fine. Royal Cert. (1948). SG 21; £600..... (18)                         | \$675   |
| 359   | ☆☆  | 1875, Queen Victoria, 1s claret Perf. 11 to 13, o.g., deep rich color, typical centering, perforations intact o.g., fine. SG 21; £600..... (18)           | \$675   |
| 360   | ☆   | 1877, Queen Victoria, 1s vermilion, perf 11-12½ x 14 to 16, part o.g. brilliant color and quite good centering, almost very fine. SG 24; £1,000..... (23) | \$1,100 |
| 361   | ☆   | 1881, Queen Victoria, 1d drab, perf 11-12½, o.g., fine. SG 37; £700.....(26)  | \$800   |
| 362   | ☆   | 1881, Queen Victoria, 4d bright blue, perf 11-12½, o.g., very fine. SG 38; £1,200..... (27)   | \$1,350 |
| <i>A very rare stamp especially in such superior condition.</i> |     |   |         |
| 363   | ☆   | 1881, Queen Victoria, 4d bright blue, perf 11-12½, o.g. deep color and better centering than normal, almost very fine. SG 38; £1,200.....(27)             | \$1,350 |
| <i>A very rare stamp in superior condition.</i>                 |     |   |         |
| 364   | ☆   | 1880, Queen Victoria, 1s bright vermilion, perf 11-12½, o.g. brilliant colour, fine. Signed A. Diena. SG 31; £800..... (28A)                              | \$900   |
| 365   | ☆☆  | 1880, Queen Victoria, 1d on half of 6d deep blue green, o.g. generally found with faults, very fine. SG 28; £550..... (30)                                | \$600   |
| 366   | ☆   | 1881, Local Surcharge, ½d on half of 6d bright green, part o.g., very fine. SG 33; £160..... (31)   | \$150   |
| 367   | ☆   | 1881, Local Surcharge, 4d on 1s bright vermilion, o.g. quite good centering. deep color and deep black overprint, very fine. Scott 33. ....(SG 35)        | £1,600  |
| 368   | ☆   | 1883, Queen Victoria, 4d ultramarine, o.g., hinge remnant, wonderful centering, extremely fine. SG 43; £750. ....(36)                                     | \$825   |
| 369   | ☆   | 1882, Queen Victoria, 4d ultramarine, o.g. well centered and bright color, very fine. SG 41; £650. (46)   | \$725   |
| 370   | ☆   | 1885, Queen Victoria, 4d red brown, lightly hinged, decent centering, deep rich color, almost very fine. W.H. Colson handstamp. SG 50; £950. ....(47)     | \$1,100 |
| 371   | ☆☆☆ | 1905, King George V, ½d to £1, set of 8, n.h. to l.h., £1 very lightly hinged, very fine. Scott 82,89,73. ....(SG 85a-93)                                 | £350    |

**Like to trawl,  
but do not want to stay glued to your computer?**



Register to participate in our auction through our Teleconference Service. ....Contact us for details.

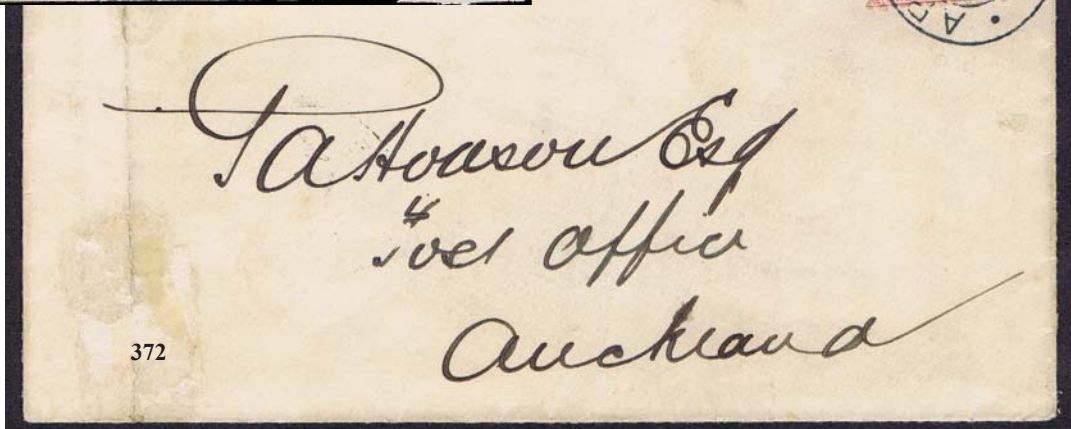


Down Sizing?  
Harmers can help.

call us at 212.532.3700







- 372  **Samoa, 1886-90, 1s rose carmine BISECT**, tied on envelope (crease) by APIA JUN 15 95 c.d.s., bearing on reverse AUCKLAND 25 JE 95 receiver. SG 25a; £350..... (18a) \$375

### Seychelles

- 373  **Edward VII Issues, 4 Registered envelopes**, 3 large, comprising 1903 15c and 12c to Germany, rest to England 1905 12c and 6c on 12c envelope 1905 12c, 3c (2) 1910 12c and 6c on 12c envelope, some documentation, very fine.....Est. Cash Val. \$200 - 300
- 374 O **Mauritius: Used in Seychelles : 1878, 2r50¢ on 5s bright muave**, neat B64 cancel fresh, fine. SG 245; £500..... (A38) \$575



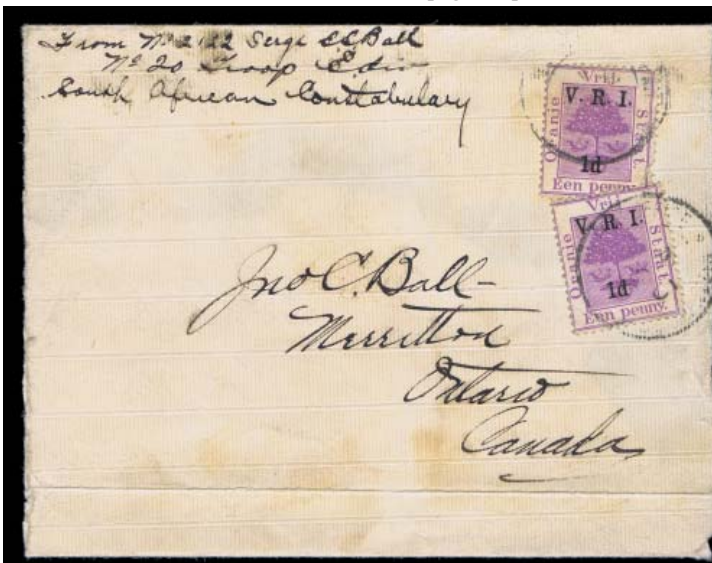
- 375 ☆ **1935, 12¢ Silver Jubilee, extra flagstaff, variety "EXTRA FLAG-STAFF"** top copy in bottom left corner marginal pair, lightly hinged fresh colors, well centered, gum with typical yellowing, very fine. Scott 119 var. ....(SG 129a) £3,500

*An Exhibition Piece.*

# South Africa

## Boer War

- 376 ▲ **1899, Boer Invasion of Natal and the Cape Colony**, bold violet three-line Boer occupation provisional datestamp tying pair of Transvaal 1d rose-red and green to piece, very few examples of this provisional Boer cancel are known, extremely fine. SG 217.....Est. Cash Val \$100 - 125
- 377 ☒ **1900, Canadian contingent, selection of 10 covers**, six from 1900, the rest are from 1901(2), 1902(2), 1915, Field Post, 2 O.F.S., 1 D.R.C., 4 stationery or cards one PPC of contingent used in Canada, one Maresh lot realized \$92..... Est. Cash Val \$350 - 400
- 378 ☒ **P.O.W. Camps, selection of 4 covers and 1 front**, 1900 or 1902, comprising 1) Transvaal to Ceylon franked with 7 G.B., 1d stamps, 2) Germany 20pf stamp to Ceylon (Pagam), 3) Netherlands 12½c to Simonstown - St Helena, 4) front C.G.H. to St. Helena, 5) C.G.H. Gong Gong to Natal to St. Helena Barkly West Censor all but one with auction lot sheets (2 exhibition pages) with descriptions..... Est. Cash Val \$300 - 350
- 379 ☒ **April 11 1900, 2nd Canadian Contingent handstamp** on MHG STRATHCONA'S HORSE, B Squadron, Canada embossed envelope bearing manuscript "On Active Service cost 207 no stamps to be had," mounted on exhibition page. Impressive horse cover.....Est. Cash Val \$150 - 200



377 ex



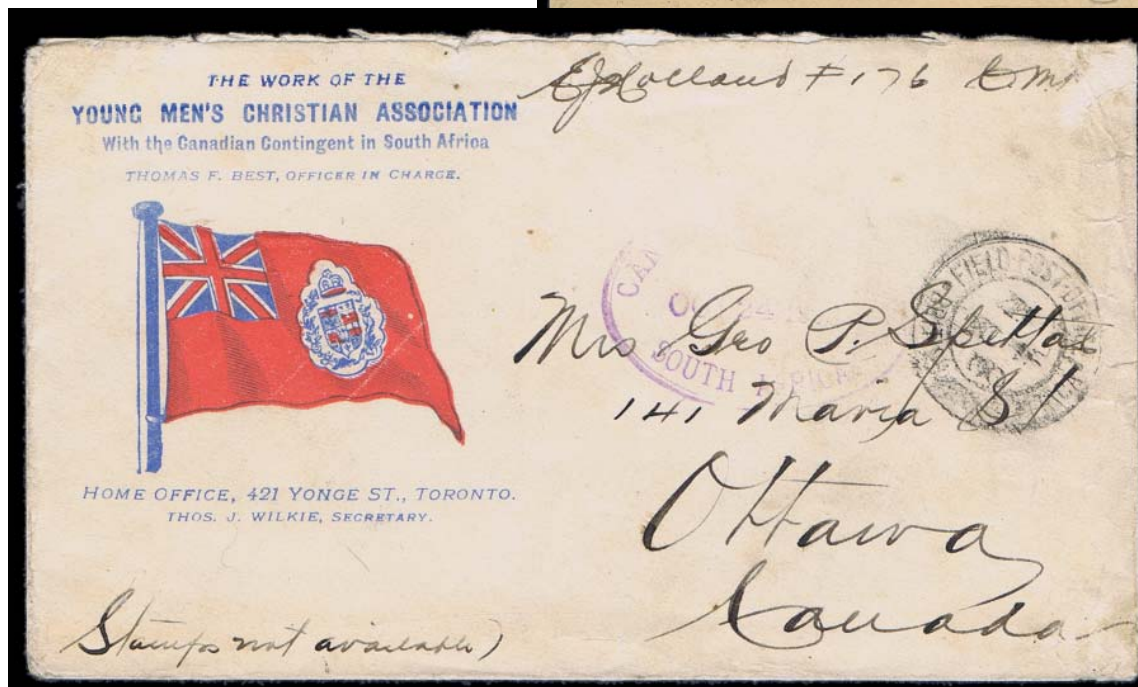
378 ex



379



380



381

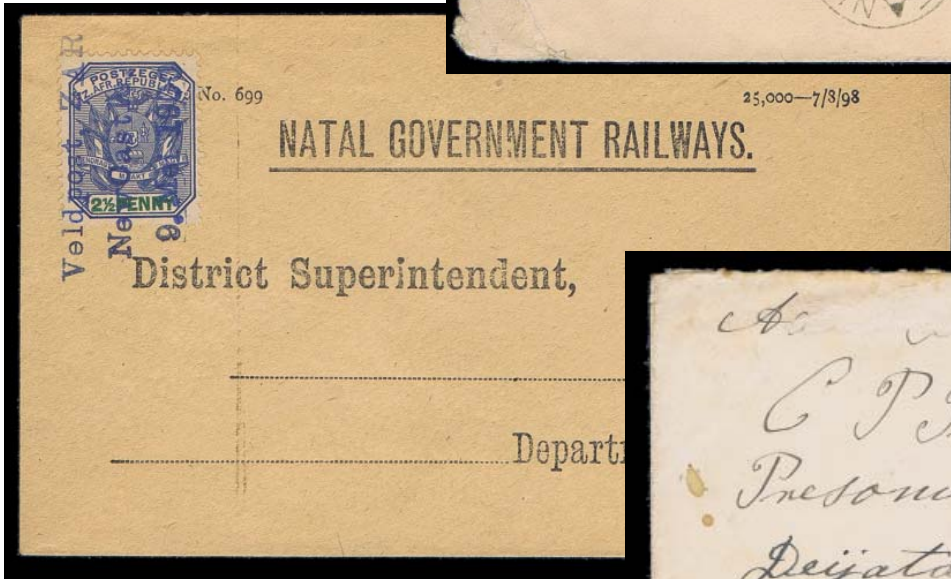
- 380  **1900, Boer Invasion of Natal and the Cape Colony, Ladysmith Siege Post Office/ Feb 13th 1900,** black garrison postal service straightline datastamp tying 1d Rose(S.G. 99) to local cover, the chief of staff of the Natal Field Forces within Ladysmith, very fine..... Est. Cash Val \$150 - 250  
*General Hunter, set up a postal service of 6 districts with central collecting boxes and bicycle messengers to the main post office, the service was available only to soliders and to civilians in imperial government employ, two similar cancels composed of metal type were used until 28 February.*
- 381  **1900 Oct 24, Canadian Contingent, YMCA cover bearing partial violet SOUTH AFRICA oval and SOUTH AFRICA FIELD PO. c.d.s., ms.** "Stamps not available," on reverse OTTAWA NO19 00 receiver colorful and impressive..... Est. Cash Val \$150 - 200
- 382  **1900, Dutch Boer War cards, set of 4 Boer War postcards,** colorful (orange and black) and humorous, presented from Boer perspective, very scarce and fresh, very fine..... Est. Cash Val \$100 - 150
- 383  **Used to Nova Scotia: 1900, Canadian Contingent, 2½ blue, tied by ORANGE RIVER C.G.H. JA 13 00 c.d.s. on colorful YMCA envelope bearing ms. "Missent to" STANLEY N.B. FE 16 00 c.d.s. on reverse 3 Nova Scotia transits, supposedly to STANLEY N.S.....**Est. Cash Val \$100 - 150
- 384  **1900, VELDPOST ZAR NEWCASTLE, 9 MEI 1900 3-line cancel on unused NATAL GOVERNMENT RAILWAYS 2½ postal card,** quite rare, very fine.....Est. Cash Val \$100 - 125
- 385  **To P.O.W., 2½d blue tied by BRANDFORT O.R.C. NO 3 00 O.R.C. c.d.s. on envelope bearing violet oval DIYATALAWA (Ceylon) censor, on reverse various transits. SG 135.....**Est. Cash Val \$100 - 150



382 ex



383



384



385





393



386



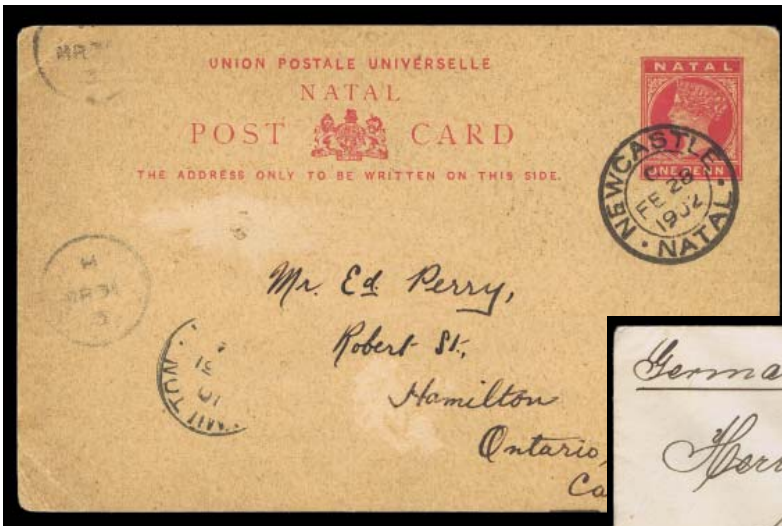
387

- 386  Used to Canada: 1900, 1st Canadian Contingent, 1d on 1d purple, Orange Free state, 2 copies tied on envelope by ARMY, S. AFRICA MR2\_00 c.d.s. strikes bearing off set Toronto cancel, on reverse ms. "Cdn soldier\_Brit in Blaem" and TORONTO AO27 00 receiver. SG 102.....Est. Cash Val \$100 - 150
- 387  P.O.W. camp, 1901 postal card from Ceylon camp to Diyatalawa South Africa Women's camp, extremely rare, all appropriate markings, scuff on 6c and face. Great topical mounted on a 1st class exhibition page and lot description.....Est. Cash Val \$100 - 150
- 388  1901, registered envelope uprated censored POTSCHEFSTROOM to P.O.W. at St. Helena, surcharge uprated #204, Bridge 18.May.01, manuscript notations on face, on reverse c.d.s. ST.-Helena/C/JU 11/01, violet unframed two-line handstamp "Passed by Censor/Potchefstroom" with Johannesburg and Capetown transits, scarce envelope and nice usage, very fine. SG 226, 239..... Est. Cash Val \$100 - 150
- 389  Natal Used to Canada, 1902, 3rd Canadian Contingent, 2nd Canadian Riifles, 1d rose tied by NEWCASTLE MR3 c.d.s. on an embossed envelope bearing on reverse HAMILTON APR 7 02 receiver, mounted on exhibition page..... Est. Cash Val \$200 - 250
- 390  Used to Australia, 3rd Canadian Contingent, 1d violet tied by ARMY POST OFFICE PRETORIA DE31 C.D.S. on envelope bearing "On Active Service Canadian Scouts Transvaal," on reverse MELBOURNE JAN 25 1902 transit, to Carlton Victoria.....Est. Cash Val \$150 - 200
- 391  1902, 3rd Canadian Contingent, 1st Troop, E Squadron, 2nd CMP, 1d UPU picture post card, cancelled by NEWCASTL NATAL 26FE, c.d.s. to Canada shows 3 views of war damaged Ladysmith, very compelling..... Est. Cash Val. \$125 - 150
- 392  4d on 6d on 3d, blue, used to Germany, tied to BLOMFONTEIN 17 MAR 02 c.d.s. on envelope bearing violet P.B.C. manuscript. "Krugersdorp" prison camp, on reverse red docketing "under cover to P.M. of Blomfontein where it entered mail, a rare camp. SG 136. (57).....Est. Cash Val \$100 - 125
- 393 ☆ ☆ 1927-28, 2s6d brown and blue green, never hinged, very fine. SG 37; £150 as hinged.....(30) \$150

<-- 388



389-->



391



392



<-- 390





394



395



396

- 394 ☆ ☆ **Swaziland, 1961, 25c on 2s6d emerald and carmine red, surcharge type II, never hinged, fresh color, incredibly rare, extremely fine. Scott 76b.....** (SG 74b) £700
- 395 ☆ **Tonga, 1896, 1/2d on 1/2d on 2d blue, surcharge reading up, disturbed o.g., fine. B.P.A.Cert. (1995). SG 36B; £450.....** (36) \$500
- 396 ☆ **Transvaal, 1900, Wolmaransstad, 1d red, overprinted "Cancelled V-R-I" in blue, o.g., fine. Brandon Cert. (1986). SG 9; £250. ....**(245) \$260

## TURKS ISLANDS



397



398

- 397 ○ **1873, Queen Victoria, 1s lilac, very light cancellation, deep color, well centered for these issues, very fine. Ex Caspary (lot 717) F. Godden. Royal Cert. (1921). SG 6; £2,000.....** (6) \$2,250  
*This is a very rare stamp and superior to the three examples we found in C. Henry, Dale/Lichtenstein and W. Fraser.*
- 398 ☆ **1881, Queen Victoria, 2 1/2d on 1s lilac, Type 17, setting 3, o.g., hinge remnant, bright fresh color, typical centering for these issues, fine. Royal Cert. (1972). SG 27; £4,000. ....**(20) \$4,000  
*Extremely rare especially with gum. Our studies show 1 example in each of the C. Henry (o.g.), Lilly (o.g.), Dale-Lichtenstein (no gum) collections. None in W.Fraser, Caspary, Samos, Isleham.*



If you don't see something that grabs you give us a call .....

**212.532.3700**

# FOREIGN



399



400



401 ex

- 399 ☆ **China, 1894, Empress Dowager 60th Birthday, 1st printing, 5ca dull orange**, indistinct cancel, light crease, well-centered, fine..... (20) \$325
- 400 O **1897, Large 2c on 3c Red Revenue**, bright color and non-intrusive cancel on overprint, very fine ....(80) \$400
- 401 ☆ **Szechuan, 1933-34, "Limited for Use in Szechwan" on Dr. Sun Yat-sen, 2nd London printing, 2c-5 complete, l.h.**, very fine .....(4-11) \$251



402

- 402 ☆ **Taiwan, 1955, Pres. Chiang Kai-shek 1st Anniversary of 2nd Re-election souvenir sheet**, folded horizontally and vertically well clear of stamps with file folder margin at right, without gum as issued .....(1114a) \$350



403

- 403 ☆ **Denmark, 1851, 2rs blue, First Printing, Pl.1, Ps. 80**, original toned gum which is common on this issue, good margins except at extreme top right, toning on front from gum condition, a very rare unused stamp, fine. Holcombe Cert. (1997). Facit 1 I. ....(1a) \$8,250





404 ex

404 ☆☆☆ **Ethiopia, 1917, 4g green and carmine black overprint, with official overprint, 21 stamps in** \$100 - 150  
 Blocks of 10 and 6 plus strip of 5, never hinged, very fine, rare (113a var.) Est..... Cash Val.



405

405 ☐ **Finland, 1858, 10k dark carmine, margins all around, fresh bright color, cancelled by boxed** \$1,250- 1,500  
 WIBORG 17 1 1857 date stamp with matching strike adjacent on folded letter sheet to Halsing-  
 ford. FENN\_POST HELSINKI handstamp, Oesch Cert. (1993). Facit 2e. (2F)..... Est. Cash Val.

*A lovely fresh cover seldom seen this nice.*

# FRANCE

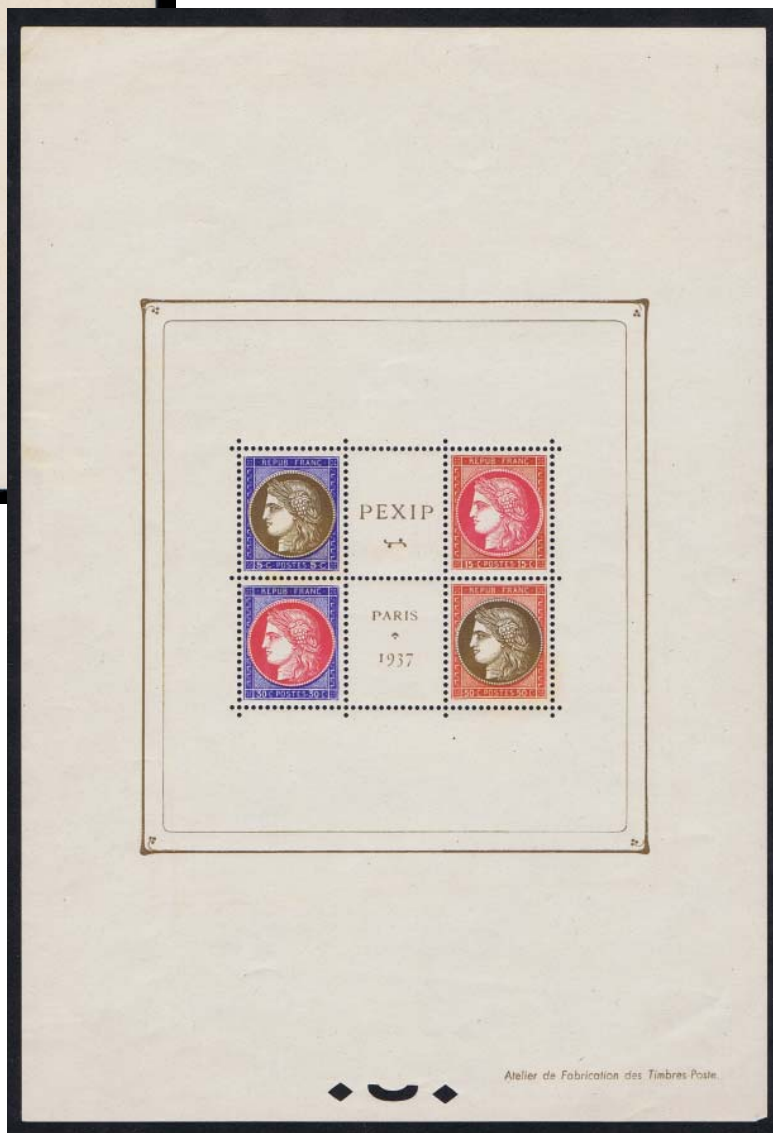
- 406 O     **1927, Strasbourg Philatelic Exhibition Souvenir Sheet**, cancelled by Exposition 9/6/27 c.d.s., with gum and hinged, very fine. Yvert 2..... (241)   \$1,000
- 407 ☆     **1929, 2fr Le Havre Philatelic Exhibition**, o.g., almost very fine. Yvert 257A.....(246)   \$600
- 408 ☆ ☆   **1937, Paris Philatelic Exhibition souvenir sheet**, never hinged, faint paper-clip impression in margin, fine to very fine. Yvert 3..... (329)   \$700



406



407



408





409 ex



410 -->



411

- 409 ☆ 1917-19, War Orphans (1st issue) complete, l.h. to o.g., #B10 wrinkles, fine to very fine. Yvert 148-155..... (B3-B10) \$2,521
- 410 ☆ ☆ Airmail, 1936, 50fr "Banknote", never hinged, very fine. Yvert 15.....(C15) \$1,700
- 411 ☆ French Colonies, 1878, 25c blue, unused, probable sheet margin copy, others good to large, small closed tear, extremely fine appearance. Calves Cert. (2008). Yvert 35.....(35a) \$4,250

### PERSIA (Iran)



412



413



414

- 412 ☆ 1876, 2 shahis, black, Type B, large margins all around, o.g., strong impression, extremely fine. Ex. Dadkhan. Sadri Cert. (2017).....(17) \$1,000
  - 413 ○ 1878, 5kr violet bronze, Type C, lightly cancelled by TEHERAN c.d.s., very fine. Sadri Cert. (2017) .....(39) \$4,000
- Only about 500 printed, very few survive.*
- 414 ○ 1879, 1 Toman, bronze red on blue thin porous paper, Type B, light cancellation, good to large margins all around, very fine, extremely rare. Sadri Cert (2017) Robineau Cert. (2008) signed Calves. ....(40) \$8,000

*Only 500 printed, only a handful survive. Equal to the Burrus copy.*

- 415 ☆ 1902, 1c - 50k, set of 10, Teheran type handstamp in rose, o.g., very fine, rare set. Signed Sadri (with positions)..... (247-257) \$2,035
- Rare set.*
- 416 ☆ ☆ 1956-57, Set of 17 complete, 100r sheet margin copy, never hinged, very fine .....(1058A-1072) \$909
  - 417 ☒ 1876, 5sh rose and black, very fine, tied by light magenta SCHIRAS c.d.s. on very neat internal use cover (29) .....Est. Cash Val. \$100 - 150
  - 418 ☒ 1880, 1sh yellow and black, two copies, very fine, tied by light RED BOUSHIR c.d.s. strikes on small internal envelope (slightly trimmed), very fine (43) .....Est. Cash Val \$100 - 150
  - 419 ☒ 1882, 25c, deep green, two copies, very fine, tied by BOUSHIR 23/1 c.d.s. on envelope (some stains), very fine (52). .....Est. Cash Val. \$150 - 200

*Very rare double rate usage.*



417



415 ex



416 ex



418



419



- 420 ☒ **1885, 5c blue, tied by YEZD 27/3 c.d.s. (inverted day)** on small envelope bearing TEHERAN transit to Hamadan, fine, Rare on Cover. Pers.82. (59Ab) .....Est. Cash Val \$150 - 200
- 421 ☒ **1885, 5c blue, tied by black TEHERAN c.d.s.** on neat local folded letter sheet bearing very rare RED TEHERAN 30 c.d.s. receiver, on reverse black oval seal, very fine (59A).....Est. Cash Val \$100 - 125
- 422 ☒ **1890, legal size envelope with high ranking from Shiraz to Boushir**, comprising 1894 issue bearing 1ch, 2ch (2 and strip of 5), 8ch (pair and strip of 3) all tied by CHIRAZ 18/4 postmarks and BOUSHIR 22/4 receiver. Impressive. Pers. 110, 11, 113, rare (90,91,93).....Est. Cash Val \$150 - 200
- 423 ☒ **1894, 5ch ultramarine**, tied by very neat Djahrom seal pink on small envelope bearing manuscript date of 9 Feb. 1895, rare and attractive, early cover, very fine. Pers.112. (92) .....Est. Cash Val \$100 - 125
- 424 ☒ **1894, 10ch orange and 1kr red & yellow**, tied TEHERAN 23/5 c.d.s. strikes on neat waybill, attractive usage. Pers.114,116. (94, 96).....Est. Cash Val \$75 - 100



420



421



422



423

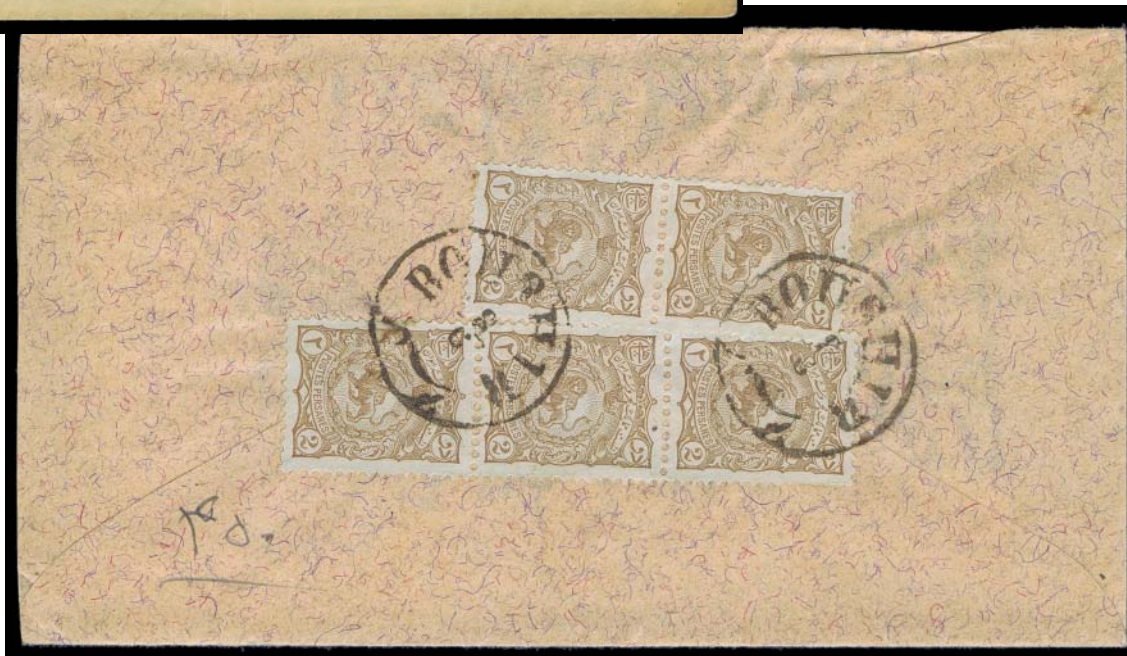


424





425



426

- 425  Used to Constantinople; 1898, 2c pale brown, 2 Pairs, tied on 16c red stationery by indistinct c.d.s. strikes, manuscript "Via Batoum," on reverse probable Turkey receiver (105).....Est. Cash Val \$100 - 150
- 426  1898, 2c pale brown, Pair and Strip of Three, tied by "BOUSHIR" postmarks on a very neat envelope bearing attractive green oval "SIED MAHOMED REZA CAZERANI BUSHIRE", a merchant handstamp on the front (105).....Est. Cash Val \$100 - 125
- 427  Used to Great Britain, 1898 2c pale brown, 5c yellow, 12c rose, all tied by TEHERAN oval postmarks on blue registered envelope bearing red LONDON registered 17-01 oval. A most attractive "cross" presentation of the stamps. (105,108,111).....Est. Cash Val \$100 - 125
- 428  Used to Austria: 1902, 2c gray, 12c blue, PAIR, tied by SCHIMERA postmarks on neat LEGATION DES PAYS-BAS official envelope bearing violet handstamp and KARLSBAD 13 VII 07 receiver, very attractive, rare usage (352,356).....Est. Cash Val \$100 - 125
- 429  Iran, 1907, Delivery Announcement bearing 1902 1kr violet, tied by SISTAN NASSIRABAD 12-2-07 postmark and KUH MALEK SIAHZIYARET seal, Pers. #319. Rare.....Est. Cash Val \$100 - 150

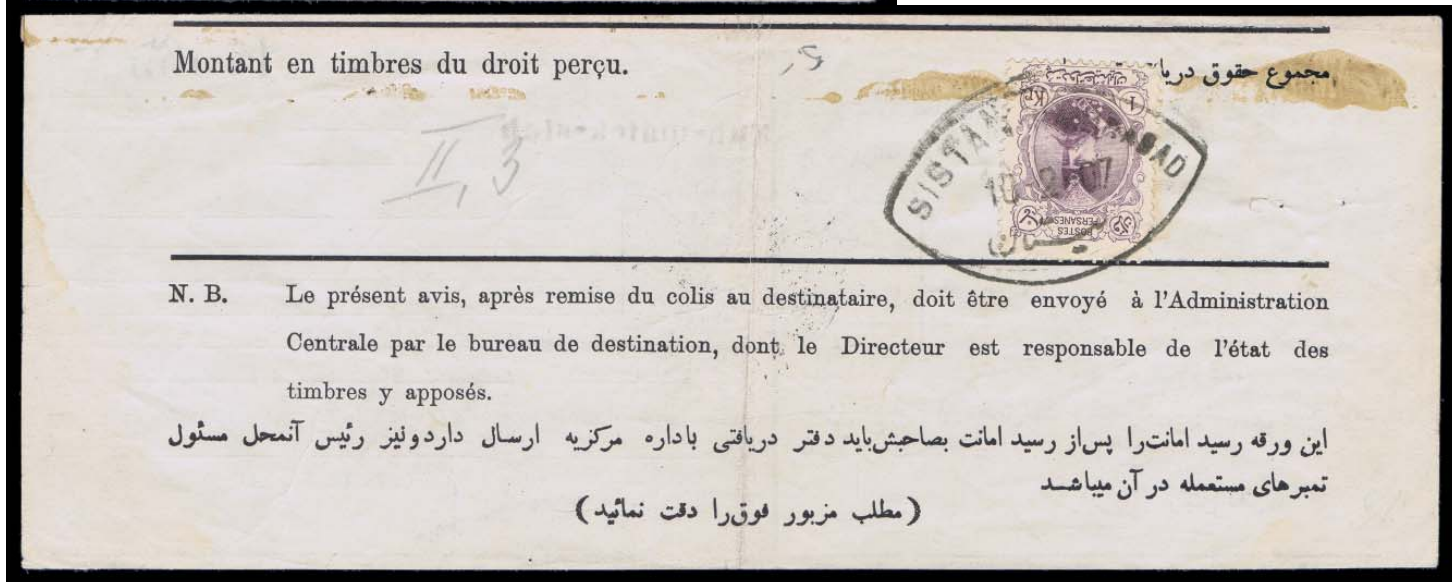


427



428

429





- 430  **1909, Coat of Arms, 5 documents**, comprised of a parcel post receipt with two parts attached, two announcements of delivery in yellow and violet, plus two part parcel post receipts in blue, interesting and colorful combinations.....Est. Cash Val \$100 - 125
- 431  **REGISTRATION LABEL USED FOR POSTAGE: 1911 (1ch.) red, block of six tied on reverse by TEHERAN 3-1-11 c.d.s. strikes on internal cover**, one crease affecting 2 stamps.....Est. Cash Val \$100 - 150  
*Very unusual. Very similar to the cover in the Burrus Collection (7-4-64).*
- 432  **1911-22, Ahmed Shak Qajar portrait issue: foreign destinations, 7 covers**, comprised of 3 to Switzerland, 3 to Germany including one post card, and 1 post card from 1915 issue to Great Britain, perforations identified, wonderful combinations.....Est. Cash Val \$75 - 100
- 433  **1911-22, Ahmed Shak Qajar portrait issue, 4 envelopes with Russian censors**, comprised of 5c and 1c, 6c(2), 24c, very fresh with perforations identified.....Est. Cash Val \$75 - 100
- 434  **1925-41, Airmail, group of 14 covers, 6 to Germany (1 front), 2 to Czech Republic, 5 internal and 1 philatelic possibly to France**, includes registered multiple frankings, 1st flights, most interesting, .....Est. Cash Val. \$250 - 350



430 ex



431





432 ex



433 ex



434 ex



- 435 ☒ **Italian States: Lombardy-Venetia, Used to Vienna: 1858, Franz Joseph**, 10s brown, type I, on reverse, 15s blue, Type I on front, both tied by boxed MILANO 7-3 (year date removed) cancels on f.l.s. bearing manuscript. "Recomandata" and red same handstamp, on reverse boxed WIEN 9/5/5.F receiver and blue Milano oval. The 15s paid the postage and the 10s the registration. A colorful cover. Sismondo Cert. (2006). (11a, 12a) .....Est. Cash Val \$250 - 300
- 436 ☆ **Italy, 1961, L.205 rose lilac "Gronchi Rosa"**, lightly hinged, wrinkles, very fine .....(834a) \$1,500 as n.h.
- 437 ☆ **Italian Post Offices Abroad, 1874, 20c blue, part o.g., fine. Signed A. Diena, Sismondo Cert. (2011).** .....(6) **\$2,800**
- 438 ☒ **Netherlands, Used to Belgium 1852, First Issue, 10c lake, PAIR large m.a.r., tied by boxed FRANCO cancels on petite envelope bearing red UTRECHT 1861 c.d.s, black P.D. on reverse HOL-LANDE-NORD NO3 transit and BRUXELLES 11-7 receiver. Very attractive, back flap tears. NVPH 2.** .....(2) \$250 - 300
- 439 ☒ **Used to Ireland: 1852, First Issue, 15c orange yellow, 2 singles plus 5c lake, all with margins all around, tied by ROTTERDAM 12-31-1860, c.d.s. strikes on folded letter sheet bearing red LONDON transit, on reverse blue BELFAST JA3 1861 receiver. Colorful and rare. NVPH 3. (3,2) .....** \$300 - 350



439



The Most Important Number in Philately  
will not be found in  
Scott, Stanley Gibbons, Yvert or Michel

1-800-223-6076

The Harmers International Auction Department.  
Dial now if you are interested in selling your collection.

L

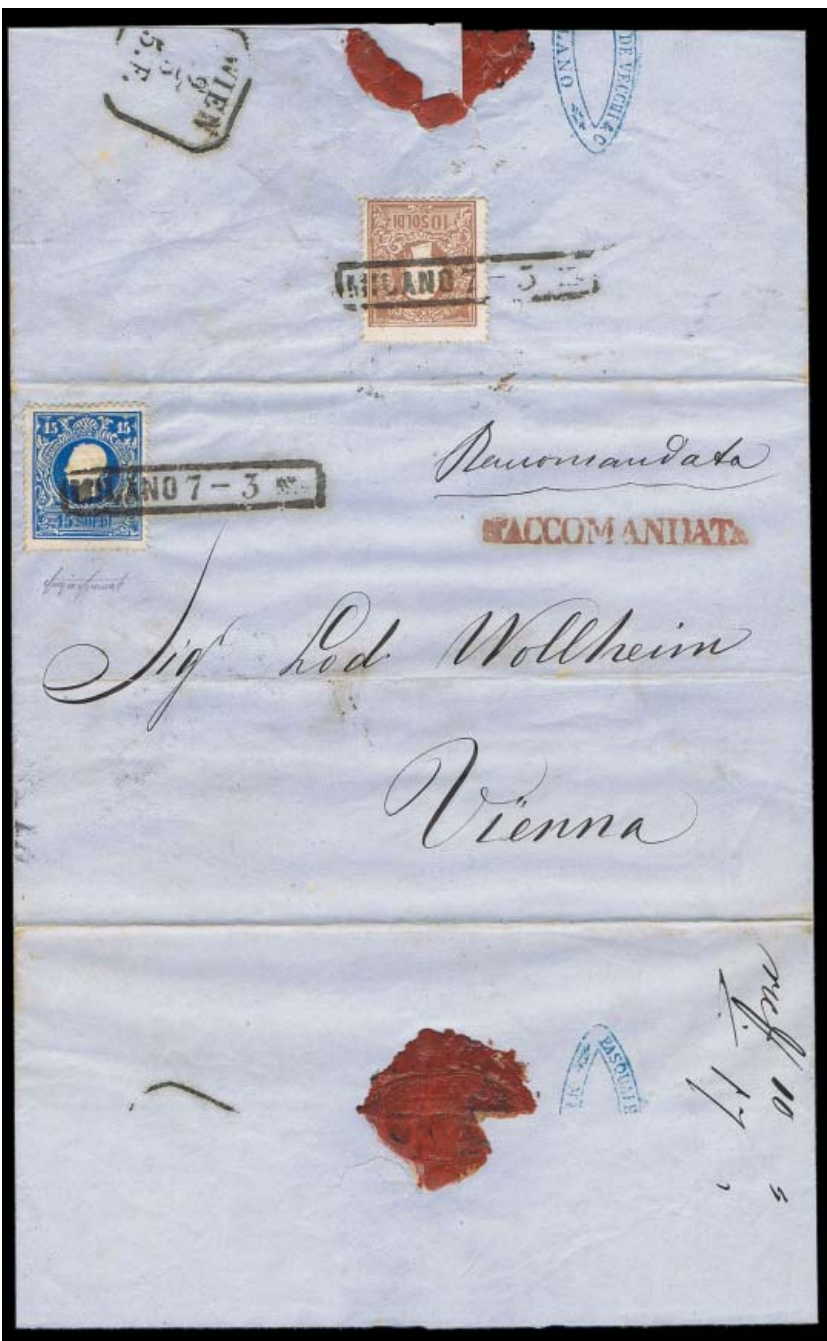


436



Photographs of the large lots  
can be found on the internet and  
on our website:  
[www.HarmersInternational.com](http://www.HarmersInternational.com)

438



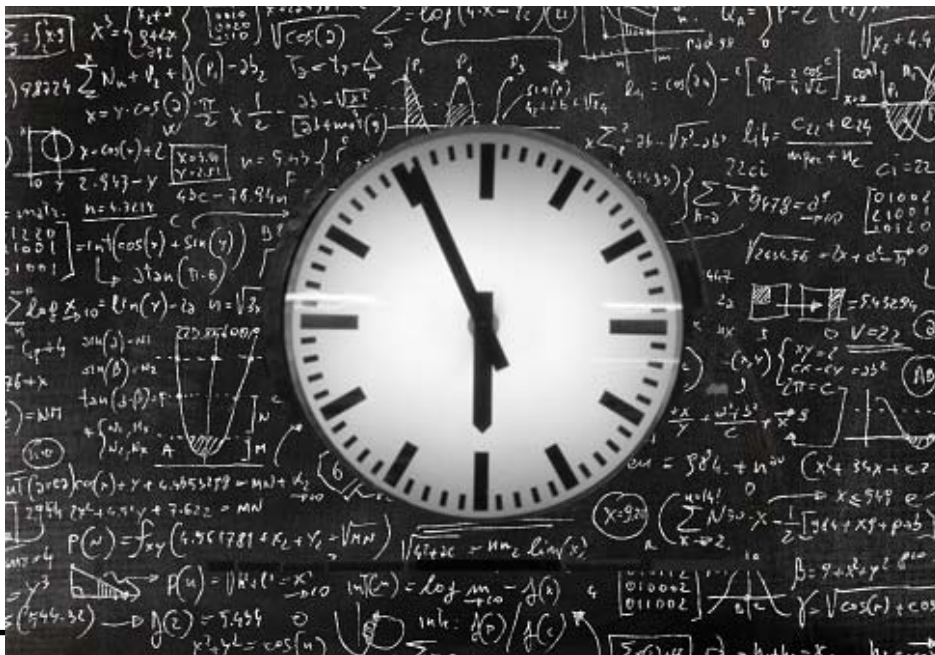
435



437



- 440 ☆ **Switzerland, 1913, Semi-Official Air Mail, LIESTAL, yellow and brown label** neatly tied by blue LIESTAL-RHEINFELDEN 27 AP 1913 special cancel on lovely multi-colored flight postcard bearing the photo of Oscar Bider, wonderful pioneer flight, Zumstein VIII Catl. 1,000 CHF..... Est Cash Val \$300 - 400
- 441 ☒ **1913, Semi-Official Air Mail, HERISAU, blue label** tied by neat SCHWEIZER.FLUGPOST 30 III 13 HERIAU c.d.s. on fine multi-colored flight postcard (crease), Zumstein V Calt. 1,000 CHF Est. Cash Val. \$300 - 350
- 442 ☆☆☆ ○ ☒ **Thailand, 1892, King Chulalongkorn, 53 stamps**, on two stock pages, comprising Scott #35, 27 o.g. 1 used, #37 7 o.g., 7 used, #38 8 o.g., 3 used, including 8 blocks of 4, 1 block of 6, No attempt has been made to identify varieties very few with faults, rare..... (35,37,38). \$730
- 443 ☒ **Uruguay, 1866, 5c blue, 15c orange yellow, both margins all around but (15c in at right), and tied by barred oval "A" cancel on folded letter sheet, unnoticed "ink hole" at bottom, bearing blue Montevideo company oval and Montevideo 8 Aug 70 origin c.d.s., to Paysandu, docketing on reverse, colorful franking. Rocha Cert. (2001), Ex C. Walman. (30,32) .....Est. Cash Val. \$400 - 450**



**EXTENSIONS**

Any lots placed on extension for expertising **MUST** be submitted by Harmers International, Inc. Submission by the purchaser may nullify any extension request. Notify us of lot number and expert.

**COVER CONDITION**

**Minor faults including, but not limited to, file folds not affecting stamps, small tears and some backflap damage have not been noted in the descriptions of this catalogue and are not grounds for returns.**



442 Ex



441 ex



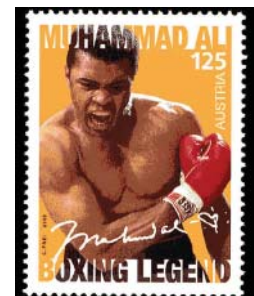
440 ex



443

“I should be a postage stamp, because that’s the only way I’ll ever get licked. I’m beautiful. I’m fast. I’m so mean I make medicine sick. I can’t possibly be beat.”

**Muhammad Ali**



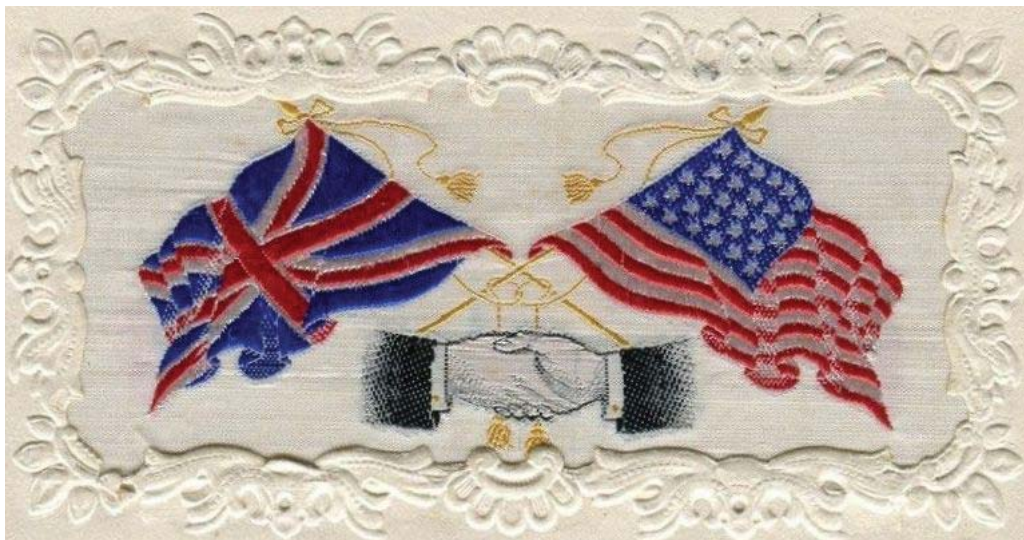


# COLLECTIONS & VARIOUS

## BRITISH COMMONWEALTH AREA

- 444   ☆☆☆   **British Africa, Primarily George VI and Elizabeth though some Victoria and Geo V, 580 incredibly fresh and clean stamps, on stock pages, probably 50% never hinged, includes good Aden and Gambia, Northern and So, Rhodesia Nyasaland, Somaliland, Swaziland also about 50% of U.P.U Omnibus.....** **£2,500 for hinged**
- 445   ☆☆   **British Africa, Primarily Cape, Transvaal and South Africa, useful group of about 50 stamps and bilingual pairs, primarily in dealer envelopes and auction lots, includes 1st issue S.A. to 5sh, ZAR's, VRI's, some not counted, fine to very fine. Scott \$1,175 Est. ....** Cash Val. \$250 - 300
- 446   ☆☆☆   **British Asia, Collection, Primarily George VI and Elizabeth, though some Victoria and Geo IV, 175 incredible fresh and clean stamps on stock pages, probably 50% never hinged includes Ceylon India, North Borneo, Pakistan, Sarawak, Singapore, almost all in complete sets.....** £1,010 for hinged
- 447   ☆☆   **British Asia & Australasia, Selection of 45 mostly used and unused stamps, in dealer envelopes and auction lot sheets, comprising Sarawak \$700, No. Borneo \$234, Japanese Occupation of Malayan States \$225, India \$163, Fiji \$187 and misc. \$150, some not counted o.g. some never hinged.....** \$1,659
- 448   ☆☆   **British West Indies, 20th century, a very useful stock of many mint stamps, on stock pages, many cataloging in the £100 to £200 range, also a haphazard stock book of mixed used and unused, important material catalogues alone £3100 though not much not counted plus 2 sheets of 120 of Bermuda (SG 44, 44a).....** **\$1,000 - 1,250**  
Est. Cash Val.

Also see lot 460
- 449   ☒   **British Commonwealth, Early 20th century, approximately 81 covers, a few to 1950's, comprised of strong Barbados, Bermuda, Grenada, Jamaica, Montserrat, nice combinations, many cards with retail pricing alone totaling well over \$1000 and generally in the \$10 to \$100 range, great retail stock. Est. Cash Val.....** \$500 - 600
- 450   ☆☆   **British Commonwealth, Mostly 20th Century, a mix-mox of a few hundred stamps and a few covers, many on old auction lot sheets, British Honduras, Griqualand West, Iraq, Great Britain Sea-horses, an ornate Penny Post front, see on the website and appreciate the selection. ....** **\$400 - 600**  
Est. Cash Val



*Not Based in the United States? No worries, Harmers International has agents Worldwide.*

## SPECIMENS

451	S	<b>Incomplete Sets, 202 stamps, well organized in stock book with all sets documented as to missing stamps. When the set has high values or is substantially complete, catalogue value as a complete set is included, l.h. to o.g., £5000 as complete with many not counted at all, fine to very fine.....</b>	<b>\$1,000 - 1,250</b>
			.....Est. Cash Val
452	S	<b>“ULTRAMAR” overprints 30 stamps, comprising Antigua B.G., Cape, Caymans, Domenica, Jamaica, Leewards, Mauritius, Nigeria, Rhodesia, Sarawak, St. Kitts, Lucia and Vincent, rare group.....</b>	<b>\$500 - 600</b>
			..... Est. Cash Val
453	S	<b>“ESPECIMEN” overprint 6 stamps, none listed, N.Nigeria S.G. D4 perfed, Sarawak S.G. 66, So. Rhodesia S.G. 17,19a, St. Vincent S.G. 135a, 137, “COLONIAS” 4 stamps overprint Caymans S.G. 41, St. Lucia S.G. 80,83,87. ....</b>	<b>\$250 - 300</b>
			.....Est. Cash Val.
454	S	<b>Generally early 20th century, 155, all in complete sets and singles all catalogued, mostly l.h. to o.g. though occasional never hinged or unused, includes Antigua, Barbados, B.E.A., Ceylon, Trinidad, etc., fine to very fine.....</b>	<b>£4,730</b>
455	S	<b>Varieties: 10 stamps with broken “M”, from Antigua, Caymans, Ceylon, Grenada, Leewards plus dot in “P” from Caymans, interesting group, plus 3 multiples from Mauritius with values blocked off, 2 strips of 3 each on piece, and 3 singles on one piece all with new values surcharged, rare group.....</b>	<b>\$200 - 250</b>
456	S	<b>26 stamps bearing Gabon receiving marks, comprising Brit. Sol. Isl. S.G. 22,29,30,33-36, Fiji S.G. 125,128,134, Gilbert &amp; Ellis S.G. 8,10,15, 17-19, 21-23, New Hebrides S.G. 12,21,24, Sarawak S.G. 9,10,16,17 (no Specimen overprint), very rare.....</b>	<b>\$200 - 250</b>
			..... Est. Cash Val.

457	☆	<b>British Commonwealth, 1935, Silver Jubilee Issue Omnibus Set, l.h. mounted in specially prepared book, very fine.....</b>	<b>£1,500</b>
458	☆☆☆	<b>British Commonwealth, 1935, Silver Jubilee Issue Omnibus Set, 271 stamps, missing only Falklands, all neatly arranged on stock pages l.h., some never hinged, very fine.....</b>	<b>\$400 -500</b>
			..... Est. Cash Val.
459	☆☆☆	<b>British Commonwealth, 1948-49, Royal Silver Wedding, 62 of 310 stamps, catalog value for 310 stamps, o.g. some never hinged, very fine.....</b>	<b>£2,240</b>
460	☆	<b>British West Indies, Small but useful group of 20 Victorian stamps, includes all but a couple o.g., include St. Christopher S.G. 1a, Montserrat S.G. 2.5, St. Lucia S.G.7,12, St. Lucia S.G.8, St. Vincent S.G.67-75, plus a few not counted, almost all on auction lot sheets, fine to very fine.....</b>	<b>£871</b>
			..... (SG #1a,2,5,7,12,8,67-75)



The pages of this catalogue are limited,

but the internet is limitless .....

see [HarmersInternational.com](http://HarmersInternational.com) for photos of the large lots



## COUNTRY COLLECTIONS

- 461 ☆ ☆ **Canada, 20th century** Collection of a few hundred, Admirals 50¢ \$1.00, also Monument, Chateau Destroyer, booklets, Back of the Book (catalogue about \$1,400), plus a very nice selection of perfin. O.H.M.S. mostly 4-dot, Chateau Destroyer, Ferry, etc. (Catalogue about \$1,300), light hinged on album pages, some of the usual issues including regular sets some short low values, very fine. Est. .... Cash Val. \$300 - 400
- 462 ☆ ○ **France, 19th and 20th Century, extensive collection, in Scott albums plus stockbook of duplicates, includes earlies with some quite decent, usual 1fr, imperf. and 5fr, Pexip sheet, usual sets in pochettes could be never hinged, early semi-postals in sets, check for never hinged. Airs with a used banknote and sets, actually quite clean.....** \$2,000 - 2,500
- 463 ☆ **Gold Coast, 1883-1954, fresh collection of 47 o.g. stamps, on 1 stock page, includes 3rd issue of 9, 1894 20s, 2 Geo. VI issues and Eliz. 1952-54.....** £561

## INDIA

- 464 ☆ **Primarily 19th and 20th Century, extensive accumulation of thousands of stamps in two stock books and loose in glassines, strong Victoria, Edward and Georges, officials with value to 25rs, vast majority mint, with many multiples, a lot to sort but worth the effort, fine to very fine..st. Cash Val.** \$2,000 - 3,000
- 465 ☒ **Exhibition Collection: 1927-47, 34 covers and cards, mounted on 22 (1 frame +) quadrille pages, local flights and G.B. destinations, includes experimentals, "Cancelled" for underpayment, etc. in addition 4 1927 flights (2 written up) Basra-Cairo RAF display, easy to expand to 2 frames, well written up. ....** Est. Cash Val. \$1,000 - 1,250
- 466 S **1925, King George V "Delhi Specimens", printed on unwatermarked paper and perforated, prepared as examples of local printing for distribution to Central Legislature Assembly members includes 16 of 2a value in 4 different colors, and 5 of 1r bicolor value in 3 different color combinations, usual gum discoloration though minimal, very rare.....** Est. Cash Val. \$600 - 800
- 467 ☆ **19th and 20th Century, an eclectic assortment of 110 stamps, including genuine stamps specimens, reprints, forgeries, some blocks have to be inspected (see website), most interesting....** Est. Cash Val \$500 - 600
- 468 ☒ **20th Century, accumulation of over 160 regular and Air Post covers and cards on stock pages and loose, mostly George V, VI, though some Victoria and Edward, great selection, see website for photos. ....** Est. Cash Val \$300 - 500

## Persia (Iran) Postal History

- 469 ☒ **1909-25, an outstanding group of over 50 covers from various issues, including Ahmed Shah Qajar small portraits, Coat of Arms, Imperial Crown, many with perforations and vignettes identified, registered censor, combinations etc., worth study.....** Est. Cash Val \$350 - 500
- 470 ☒ **1898-1906, 15 covers, comprised of 1898 issue 5c(2), 10c(1), 1899 green papers 3c (1 with pair), 6c(6), 1902 3c (2 pairs and strip of 3), 1906 3c and 6c (1) 3c (1 with pair 6c(1), varied cancels, 5c and 1c and regular label (1), ....** Est. Cash Val \$150 - 200
- 471 ☒ **1926-42, Foreign destinations, group of 11 very interesting covers plus 2 postal cards, includes 4 to Germany, 1 via Russia, 3 to U.S. 1 censored, 2 to Switzerland, 1 to Austria and 1 1926 to India possibly consular to Poona readdressed to Bombay, plus 2 postal cards fabulous selection.....** Est. Cash Val \$150 - 200
- 472 ☒ **1942-73, group of 32 primarily covers, including Avicenna issues (all 5 sets FDC's) other FDC, aerogrammes and Coupon-Response International, includes M.O.P. free frank, Registered. cover to Austria etc.....** Est. Cash Val. \$100 - 125
- 473 ☒ **1930's, group of 10 interesting local covers, with mixed and multiple frankings, Registered, varied selection plus 2 postal cards.....** Est. Cash Val. \$75 - 100
- 474 ☒ **1885-91, group of 20 5ch local covers, comprised of 1885 5ch dull blue (6), 1889 5ch lilac (7), 1891 5ch deep blue (7), almost all perfed, most towns noted, a hard to find group and missing from most dealer's stock, some not catalogued. ....** \$640

## Bidding

Harmers International avails you to EIGHT forms of bidding in our auctions.

- |                     |                  |
|---------------------|------------------|
| 1) Mail             | 2) Fax           |
| 3) Agent            | 4) E-Mail        |
| 5) Telephone        | 6) Live Internet |
| 7) Dynamic Internet | 8) In Person     |

**ST. VINCENT**



475 ex



476 ex

- 475 ☆ 1863- 91 Queen Victoria, Exceptional Collection of 32 primarily o.g. stamps (1 used) on Scott pages, all identified by Gibbons and individually catalogued, highlights include #9, 12, 13,14,16,23, 25, 30 and 34 (unused), etc., fresh colors, see catalog for stamps removed. .... £6,500
- 476 ☆☆☆ 1883-1967, collection of 192 fresh o.g. stamps, on Scott album pages, through mid 1950's, n.h thereafter, Victoria through Elizabeth, some very nice sets and especially very fresh, ..... £1,250

- 477 ☆○  **Slovenia, 1919-21, Specialized Collection, almost exhibition, mint and used stamps, postage dues, newspaper, revenues, with duplicates, shades, cancels and printings, most importantly there are 62 covers and cards including Zagreb to South Africa, U.S.A., Belgium, registered with labels, multi and mixed frankings, documents with stamps or dues, bisects, all in one album, fascinating items ..... Est. Cash Val. \$800 - 1,000**

**WORLDWIDE COLLECTIONS**

- 478 ☆○  **Worldwide, British and Foreign: 19th and 20th Century, The property virtually as received, mostly used, housed in 21 stock books, 4 of which are British, and 3 sparsely filled albums, the mint stamps are generally more recent issues, there are some useful earlier issues but generally not in sets, mostly sorted and easy to break down, also some PPC.....Est. Cash Val. \$1,500 -2,000**
- 479  **Worldwide, Zeppelins, group of 9 envelopes and postcards, 5 franked by U.S. stamps, 4 by German, destinations include Switzerland, Germany, U.S and Brazil, U.S. includes 2nd air post issue 8c and 24c pairs, C18, interesting group. ....Est. Cash Val. \$150 - 200**

**Harmers International, Inc. offers Live Internet bidding in our auctions.**

Internet Service can be accessed through our website or directly through Stamp Auction Network.Com.

**Here are few important details to remember.**

- 1) All bidders must register Make Certain you have the right Company.
- 2) Call or send us an email if you are not certain.
- 3) Internet speed and performance varies . “Downed Systems and Lost Connections” can occur. We strongly recommend using the phone or an agent as a back-up.

"Stamp Collecting dispels boredom, enlarges our vision, broadens our knowledge, makes us better citizens and in innumerable ways, enriches our lives"

- President Roosevelt

*His collection was sold by the Harmer Family*





*End of Sale - Thank you*

# Harmers



# International Inc.

1325 Echo Hill Path, Yorktown Heights, New York 10598 USA  
☎212.532.3700 Fax: 914.962.5885 Email: bids@HarmersInternational.com

NOT Affiliated with  
H.R. Harmer, Inc.

DATE OF AUCTION \_\_\_\_\_

Are you a New Client?  Yes  No  
(If Yes you must complete a New Client Registration Form)

Please Limit My Purchases to \$ \_\_\_\_\_

Preferred Contact Method: \_\_\_\_\_

Are you a Stamp Dealer?  Yes  No  
(If Yes you must provide a copy of your Res-Sale Certificate or UIC)

I UNDERSTAND THAT A 18% BUYER'S PREMIUM WILL BE ADDED TO THE "HAMMER" PRICE ON EVERY LOT.

Name: \_\_\_\_\_ Company: \_\_\_\_\_

Address: \_\_\_\_\_

City: \_\_\_\_\_ State: \_\_\_\_\_ Zip: \_\_\_\_\_ Country: \_\_\_\_\_

Phone: \_\_\_\_\_ Alt. Phone: \_\_\_\_\_ eMail: \_\_\_\_\_

Shipping Address if Different from Above: \_\_\_\_\_

Signature \_\_\_\_\_ Date: \_\_\_\_\_

Below are the highest prices I agree to pay for each of the lots listed, it being understood that they will be sold to me below my limits if the auction permits. I have read and agree to the "Conditions of Sale" in your catalogue.

By Submitting this bid, I understand that: A) The amount of my bid does not include the 18% Buyer's Premium to be added to the "hammer" price, B) I am responsible for NY State Sales if applicable C) I am responsible for all Shipping fees, Customs and Duty fees Etc. if applicable, D) Unless I provide proof of insurance through my own carrier, I will be charged for transit insurance, E) If I choose to pay by credit card, a 3% fee will be added to the total charge, F) Bids are not considered RECEIVED unless they have been acknowledged by telephone or e-Mail by Harmers International, G) Unknown Bidders may be required to provide a 25% bidding deposit or credit card authorization.

Please note after the bid, if you wish the lot EXPERTISED and indicate the Expert.

Lot No.	Limit \$	Tick for Expert.	Lot No.	Limit \$	Tick for Expert.	Lot No.	Limit \$	Tick for Expert.	Notes:

### BIDDING LEVELS

Up to \$ 150	-----	\$ 5
\$150 - \$ 300	-----	\$10
\$300 - \$ 600	-----	\$25
\$600 - \$1,500	-----	\$50
Over \$1,500	apx.	5%

Bids which do not conform to the above will be automatically reduced to the correct level.

IF NECESSARY, INCREASE MY BIDS BY  10%  20%  BREAK TIE BIDS TO SECURE MY PURCHASE  
 I am also interested in selling. Please contact me.



### Facilities for the mail-bidder

1. Where you want one of several similar lots, bid on all such lots adding an "or" between.
2. If you want to limit your purchases, simply insert the amount on the face of the bid form. When the limit is reached, subsequent bids will be deleted.
3. Postal viewing can be arranged. Please call our offices for details.
4. Valuation of lots in which clients are interested are provided upon request.

5. "Buy" bids are respectfully declined to prevent misunderstandings. Instead, please give your maximum bid and we will, as always, endeavor to save you as much as competitive bidding will permit.

6. Prices realized will be posted on our web site.

7. We will confirm receipt of your bids by phone, fax or Email. Please contact us if your bids have not been acknowledged 24 hours prior to the stated auction date.

8. On-Line, TelCon and Phone bidding is available. Contact us at 212.532.3700 or [www.HarmersInternational.com](http://www.HarmersInternational.com).

### New Bidders

If you are not a recognized Harmers International, Inc. bidder, please complete our New Bidder Registration Form.

You will be requested to submit three auction house / dealer credit references or may be asked to submit a deposit.

- Thank you

— fold here and seal —

### HAVE YOU:

- Checked your bids?
- Entered the Date of Sale?
- Checked your name and address?
- Signed the form?

Please, for your security, **DO NOT** include any Credit Card Information on this form.

*Harmers*



*International Inc.*

[www.HarmersInternational.com](http://www.HarmersInternational.com)  
Ph. 212-532-3700

NOT Affiliated with  
H.R. Harmer, Inc.

— fold here and seal —

Place  
Stamp  
Here

**DATED BIDS  
- IMPORTANT -**

**Harmers International, Inc.**  
1325 Echo Hill Path  
Yorktown Heights, NY 10598  
U.S.A.

## CONDITIONS OF SALE

### **THE PLACING OF A BID SHALL CONSTITUTE ACCEPTANCE OF THE CONDITIONS OF SALE**

#### **BIDDING**

1. Unless announced otherwise by the auctioneer, all bids are per lot, as numbered in the printed catalogue applicable to such auction (the "Catalogue"). Harmers International, Inc. (hereinafter "Harmers"), as agent for the consignor or vendor, shall regulate the bidding and shall determine the manner in which the bidding shall be constructed. Harmers reserves the right to withdraw any lot prior to the commencement of bidding (without liability to any potential purchaser or agent), to re-offer any withdrawn lot, to divide a lot and to group two or more lots belonging to the same consignor or vendor. Harmers has the right to refuse any bid believed not made in good faith, demand a cash deposit from anyone prior to bidder registration, or demand payment at the time the lot is knocked down to the highest bidder for any reason whatsoever. Harmers requires new customers submit a bidders registration form at least ten (10) days prior to the auction.
2. The highest bid acknowledged by the auctioneer shall prevail. Should a dispute arise between bidders, the auctioneer, in his sole discretion, shall determine who is the successful bidder and whether to re-offer the lot in dispute. Should a dispute arise after the sale, the auctioneer's sale records shall be conclusive.
3. **On all lots sold, a commission of 18% on the hammer price is payable by the buyer to Harmers.**
4. (a) The auctioneer reserves the right to bid on behalf of clients (and consignors or vendors) but shall not be liable for errors and omissions in executing instructions to bid, however received, notwithstanding whether such errors or omissions are those of the bidder, the bidder's agent or the auctioneer. (b) All lots are offered subject to a reserve price. The auctioneer, at his discretion, may implement such reserve price by bidding on behalf of the consignor vendor. (c) It may also be assumed that all consignors have been advanced monies against the sale of their stamps and Harmers therefore has a security interest over and above the auction commission. (d) Purchase made by a consignor or vendor or his agent on his own lots shall be considered as a sale and shall be subject to commissions and sales tax as set forth in these Conditions of Sale. (e) Agents are responsible for all purchases made on behalf of their clients, unless other arrangements have been confirmed by Harmers in writing prior to the auction.

#### **PAYMENT FOR PURCHASES**

5. Payment for lots and the commission payable with respect thereto, including those on which extensions are desired (see paragraph 9 of these Conditions of Sale), shall be as follows:
  - (a) **Floor Bidders.** Payment of the purchase price and the commission applicable thereto, or such part thereof as Harmers shall require, shall be made by the purchaser in such manner as Harmers may determine. The name and address of the purchaser of each lot shall be given to the auctioneer immediately following the sale of such lot.
  - (b) **Mail , On-Line and Telephone Bidders.** A successful bidder will be notified of lots purchased. Before Harmers will send such lots, payment in full (including the commission payable to Harmers) must be received by Harmers within three (3) business days of receipt of the aforesaid notification. However, a purchaser known to Harmers, or who furnishes satisfactory references, may, at Harmers' option, have purchases delivered or forwarded for immediate payment in US dollars. Mailed delivery will be to the registered address on the bid sheet and receipt of proof of shipment to the registered address shall constitute delivery. All charges for handling, delivery, and insurance (to the extent obtained by Harmers on behalf of the purchaser) shall be added to the purchase price. Risk of loss in transit shall be on the purchaser.
  - (c) Credit Card and PayPal Users are subject to an additional 3% fee and may be requested for a bidding deposit.
6. Title shall not pass to the purchaser until full payment has been received by Harmers, as agent for the consignor or vendor.
7. (a) Purchasers agree to pay for lots as specified in paragraph 4 of these Conditions of Sale and no credit shall be extended. A late payment charge of 2% for the first month and 2 ½% for each succeeding month compounded shall be added and Harmers will charge on-file credit cards if payment is not made in accordance with aforesaid conditions. (b) In the event that a bidder shall fail to comply with these Conditions of Sale ("Non-Complying Bidder"), then, as to any lot with respect to which such failure to comply occurs, Harmers may, at its sole discretion, re-offer such lot during the same auction or at an auction at a later time, or by private treaty at such time at Harmers, at its sole discretion, deems appropriate. The Non-Complying Bidder shall be liable for the deficiency, if any, between the hammer price and the net proceeds of a sale to a subsequent purchaser (whether at auction or by private treaty), as well as for all costs and expenses of both sales, all other charges due thereunder (including commissions with respect to both sales, whether payable to Harmers or to a third party) and all incidental damages related thereto. It shall be at Harmers' sole discretion to determine whether to re-offer the lot theretofore hammered-down to a Non-Complying Bidder at the same auction, or by private treaty in due course, or at a subsequent auction, conducted by Harmers, and in no event shall any surplus

- arising from the sale of a re-offered lot be payable to a Non-Complying Bidder.
- (c) A defaulting purchaser shall be deemed to have granted Harmers a security interest in property in Harmers possession owned by such purchaser. Harmers shall have all the rights afforded a secured party under the New York Uniform Commercial Code with respect to such property and may apply against such obligations all monies held or received by it for the account against such obligations all monies held or received by it for the account of, or due from Harmers to such purchaser.
- (d) If Harmers takes any legal steps to secure payment of a delinquent account, the defaulting purchaser shall be liable for all legal and other expenses incurred by Harmers to secure such payment, including but not limited to a reasonable allowance for attorneys' fees. For purposes of this paragraph, the term "legal steps" shall be deemed to include any and all consultation by Harmers with its attorneys with respect to all matters arising out of a delinquent account.

#### **EXHIBITION AND INSPECTION OF LOTS; QUALITY**

8. (a) **On Premises Inspection and Postal Viewing.** Ample opportunity is given for on premises inspection prior to the auction date and, upon written request and at Harmers discretion, for inspection by postal viewing (all as detailed elsewhere in the Catalogue). (b) Each lot is sold as genuine and correctly described, based on individual description as modified by any specific notations in the Catalogue, including but not restricted to the section thereof entitled "Key to Cataloguing". (c) **Quality.** Any lot which a purchaser considers to be incorrectly described shall be returned to Harmers within two weeks of its receipt by such purchaser ("Returning Purchaser"), provided, however, that the same must be received by Harmers within four weeks of the date of the auction. Any lot, the description of which is disputed, must be returned intact in the condition received by the purchaser. Notwithstanding the foregoing, the following lots are not returnable, except at the sole discretion of Harmers: (i) lots from purchasers who attended the exhibition of lots; (ii) lots examined by postal viewing; (iii) lots on account of their appearance, if they are illustrated in the Catalogue; (iv) lots described as having repairs, defects or faults; (v) U.S. stamps (through 1918) for reasons of paper inclusions; (vi) no encapsulated stamp (unless originally offered in this condition); (vii) lots containing more than ten (10) stamps; and (viii) contradictory grading certificates.

#### **EXTENSION OF TIME FOR CERTIFICATION**

9. When an opinion from a "generally recognized authority" is desired by the purchaser:
  - (a) A request for expertising must be made to Harmers, in writing, within 7 days of the date of the auction. The request must include the name and address of the "generally recognized authority". The "generally recognized authority" must be approved, in writing, by Harmers.
  - (b) **Harmers, and only Harmers, will submit the item to the agreed upon expert.**
  - (c) If a lot is certified by a "generally recognized authority" to be other than as described, or the authority declines to express an opinion, this is normally grounds for the return of a lot.
- (d) Except to the extent set forth in paragraph 10 of these Conditions of Sale, payment of the expense of certification will be paid by the purchaser.
- (e) In the event that a dispute cannot be resolved by reference to a "generally accepted authority" and Harmers thereupon undertakes to re-offer the lot with a description identical to the description disputed, the Returning Purchaser shall be liable for the deficiency, if any, between the proceeds of the sale to the Returning Purchaser and the proceeds of a sale to a subsequent purchaser, as well as for all costs and expenses of the re-sale, including commission, and all incidental damages.

#### **EXPENSES OF CERTIFICATION**

10. Expenses of certification shall be borne by the purchaser, except where a lot is certified "other than as described" and is returned to Harmers in accordance with paragraph 9 of these Conditions of Sale. Expenses incurred in the submission and the return of a lot under paragraphs 8 or 9 of these Conditions of Sale are not refundable, except the cost of the certificate itself.

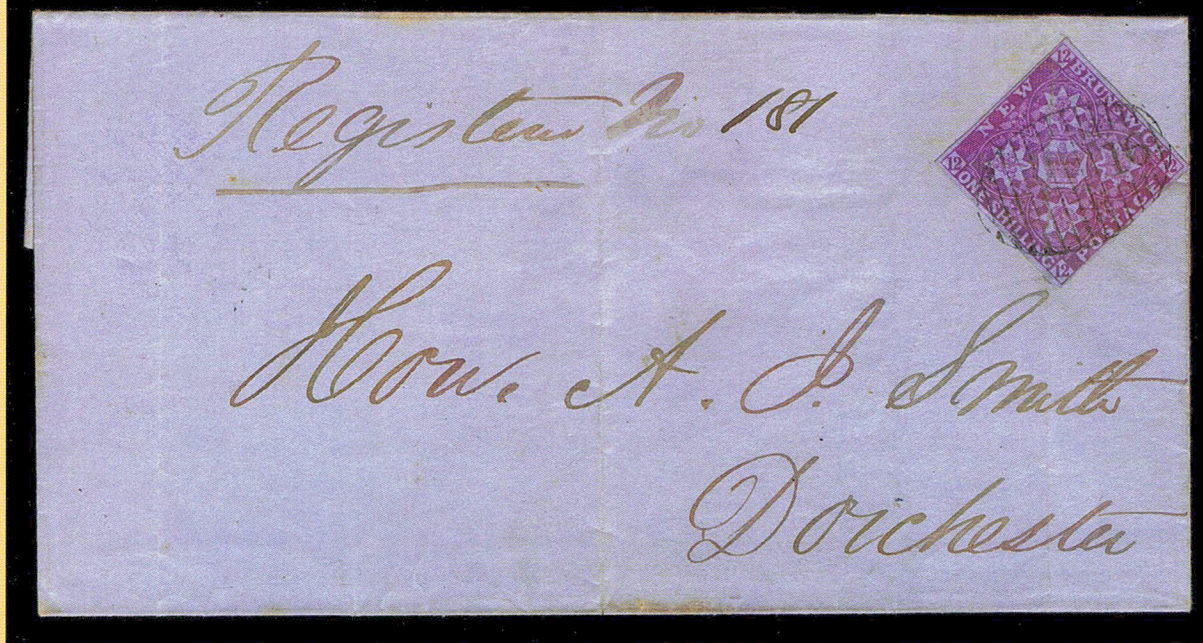
#### **SALES TAX**

11. Unless exempted by law, a purchaser shall pay New York State and local sales taxes, or any compensating use taxes of any other State or government authority (collectively, "Taxes"). A purchaser claiming an exemption from payment of any Taxes shall provide evidence acceptable to Harmers of such exemption

#### **APPLICABLE LAW, JURISDICTION, ETC.**

12. All matters arising out of this auction shall be governed by the laws of the State of New York, without giving effect to the choice of law principles thereof.
13. Any controversy or claim arising out of or relating to this auction shall be settled by arbitration in the City of New York, State of New York by a single arbitrator in accordance with Rules of the American Arbitration Association and judgment upon the award rendered by the arbitrator may be entered in any Court having jurisdiction, provided, however, that notwithstanding the foregoing, if either party determines that emergency relief is required in the nature of a temporary restraining order or preliminary injunction that such party may, without being in violation of this paragraph 13, commence such emergency proceedings without the involvement of the American Arbitration Association or an arbitrator, whether or not an arbitration proceeding has been commenced.
14. The purchaser at auction (a) consents and submits to the jurisdiction of the Courts of the State of New York and of the Courts of the United States for a judicial district within the territorial limits of the State of New York for all matters arising out of the auction sale, including with out limitation, any action or proceeding instituted for the enforcement of any right, remedy, obligation and liability arising under or by reason thereof; and (b) consents and submits to the venue of such action or proceeding in the City and Country of New York (or such judicial district of a Court of the United States as shall include the same).





Tuesday  
July  
31,  
2018